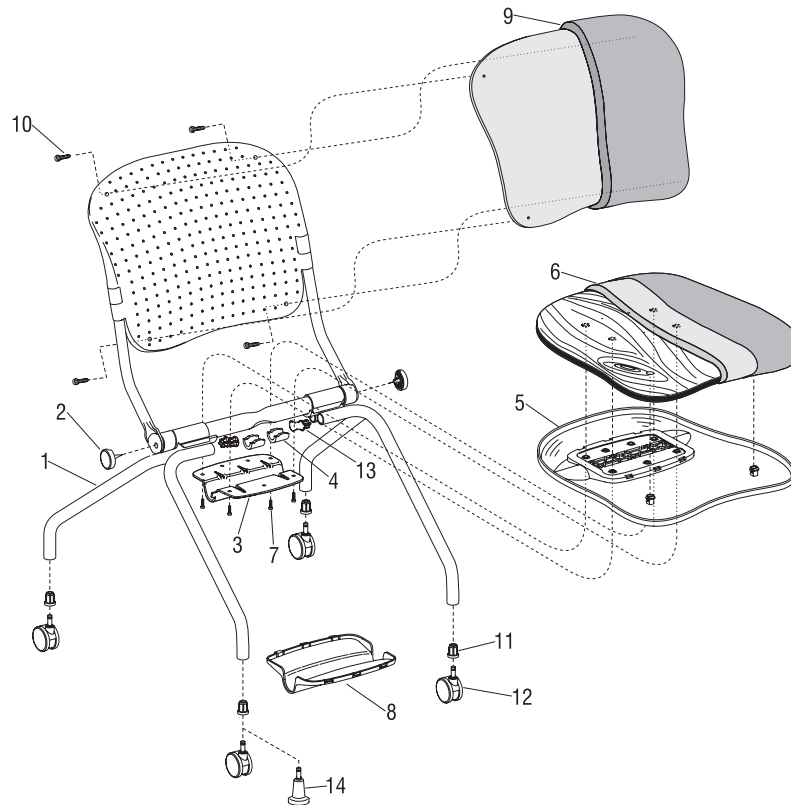


# Parts Diagram ■

Torsion® on the Go!®

Upholstered Back Armless Nesting Chair

February 2024



.XX = Select Color

PMR = Product Modification Request

Item	Part Number	Description
1	PMR	Replacement Chair (except seat)
2	PT.06.7012.XX.X	Cap, Back Support
3	PT.44.7005.ZN.X	Plate, Seat Support
4	PT.06.7007.X	Bushing, Seat Pivot
5	PT.06.7005.XX.X	Shroud, Seat
6	TGRC	Cushion and Board, Seat
7	12.0332.X	Screw, Seat Board, $\frac{5}{16}$ "-18 x 1 $\frac{1}{4}$ "
8	PT.06.7006.XX.X	Shroud, Seat Support
9	TGRC	Cushion, Backrest
10	12.0110.XX.X	Screw, Backrest, #10 x $\frac{1}{2}$ "
11	46.5417.BL.X	Bushing, Caster
12	09.0440.BL.X	Caster, 60mm Diameter Carpet (black only)
	09.0441.BL.X	Caster, 60mm Diameter Hard Floor (black only)
13	46.0385.BL.X	Cap, Leg Tube
14	10.0150.X	Bell Glide