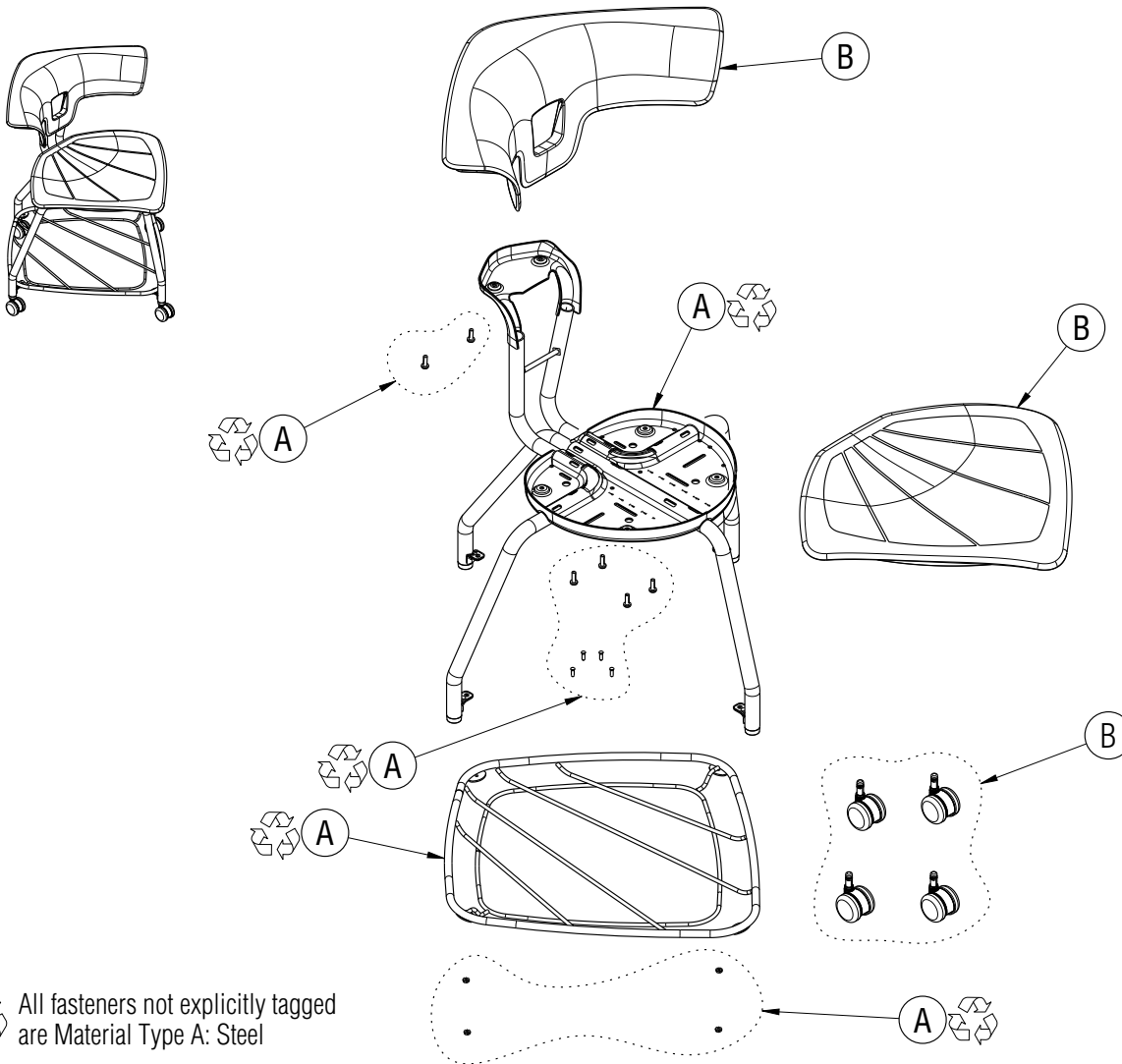



# Disassembly Instructions

## Ruckus 4 Leg Chair

Material Type:      A .Steel      B. Plastic




 All fasteners not explicitly tagged are Material Type A: Steel

### Procedure:

1. Remove the screws holding the backrest to the seat frame.
2. Remove the screws holding the seat to the seat plate.
3. Remove the screws holding the backrest to the leg frame.
4. Remove the casters.

### General Notes:

1. Disassembly time: 15-20 minutes
2. This procedure assumes basic familiarity with hand tools and furniture terminology: no specialized training is required
3. All materials removed and disassembled shall be sorted and segregated with like materials and disposed of or recycled according to recycling availability or waste acceptance
4.  For items to be recycled, refer to KI's End of Life Recycling Matrix and KI's End of Life Recovery Options Matrix, available at [www.ki.com](http://www.ki.com)

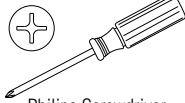
### Required Tools



Gloves



Safety Glasses



Phillips Screwdriver