

PRODUCT SPECIFICATIONS

Sela® Lounge Collection

December 2022

TECHNICAL SPECIFICATIONS

Frame Construction

Seat frames are constructed of $\frac{3}{4}$ " laminated hardwood plywood that is CNC cut with $\frac{5}{4}$ maple crossrails. Ottomans are constructed of $\frac{3}{4}$ " laminated hardwood plywood. All main frame joints are double doweled and glued. Stress points are further reinforced with the use of glue blocks that are stapled or screwed in place. The arms are constructed of $\frac{1}{2}$ ", $\frac{3}{4}$ " and 1" laminated hardwood plywood all CNC cut.

Sled Base Construction

Chair, loveseat, sofa, and ottoman legs are constructed of 1" O.D. x 16-gauge round steel tubing welded to a 14-gauge steel mounting plate and secured to the frame with sixteen #10 x $1\frac{1}{2}$ " steel pan head wood screws.

Wood Frame Construction

Wood base is 12/4 kiln dried Beech or Maple hardwood with a moisture content of 6%-8%. Wood base joints are mortise and tenon and dowel construction. Oversized corner blocks are glued and attached with screws and staples to secure.

Wood Armcap Construction

Wood armcaps are 4/4 kiln dried Beech or Maple hardwood with a moisture content of 6%-8%. Wood armcaps are attached with compression dowel construction.

Wood Finish

Exposed wood is machine sanded with 180 grit paper, followed by 220 grit paper for a smooth surface. A spray stain is then applied for an overall even color. Once the stain is applied, the wood parts are run through a burn-off oven and the wood finish is baked on for one hour at a temperature of 140° to 150° Fahrenheit. The wood is then sealed to prevent moisture imbalance. The entire frame is then sanded by hand with 400 grit paper for fine detailing. The final step is the application of a conversion varnish topcoat which is also run through the burn-off oven process.

Suspension - Seat & Backrest

The seat is constructed with stretch strap webbing, inner woven and stapled into position. Both seats and backrests are covered with a layer of FLW (reinforced non-woven fiber) on top.

Foam - Backrest

The backrest foam has a density of 1.5, compression of 26 lb, is 3" thick and is contour cut for consistency. The seat foam is 6" thick with a density of 1.5 and compression of 30 lb. A $\frac{1}{2}$ " super-soft wrap covers the front and top of the seat. The arm foam varies from $1\frac{1}{4}$ " thick to $\frac{1}{2}$ " thick, and has a density of 1.5 and compression of 30 lb.

Table Model Numbers

- Models: 1350, 1360, 1351, 1361, 1352, 1362

Table Construction

Table panels are $1\frac{1}{8}$ " thick high-density particle board core, with high-pressure laminated construction with a medium density fiberboard core, high pressure laminate facing on both sides, and 2mm PVC edge banding. Panels are secured together using doweled and glued joints and wood screws.

Base Constructions

Bases are constructed from $\frac{3}{4}$ " O.D. x 16-gauge steel tubing welded to a 10-gauge steel mounting plate and secured to the table with 16 #10 x 1.5" steel pan head screws.



Furnishing Knowledge®

TECHNICAL SPECIFICATIONS

Tablet Arm

Right facing (left-handed) and left-facing (right-handed) tablet arms are available. Select between a removable, non-removable or articulating removable tablet arm. Tablet hole cover option available when a removable arm is specified. One standard top shape available in any standard KI laminate, tablet edge offered in a variety of wood veneer finishes - please specify. See Color Addendum for veneer finish options. Specialty laminates available on a "per quote" basis. Wood arm caps can be specified with a tablet arm.

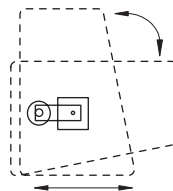
Articulating Option

Articulating Arm Features:

- Mechanism allows 360 degree range of motion
- Double swivel action
- Pivot point increases lateral movement
- Metal to metal connection
- Arm is removable and can be specified with a tablet hole cover.

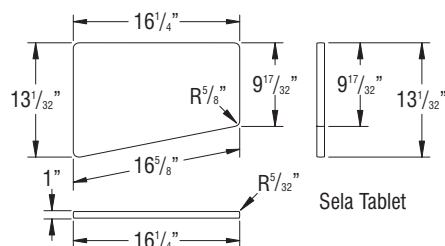
Articulating Arm Benefits:

- Allows user to position tablet for maximum comfort
- Better adjustability for various body types
- Easier egress and ingres of chair
- Provides strength and reliability



DIMENSIONS

Tablet Arm



STATEMENT OF LINE



I313T

CODE COMPLIANCE

