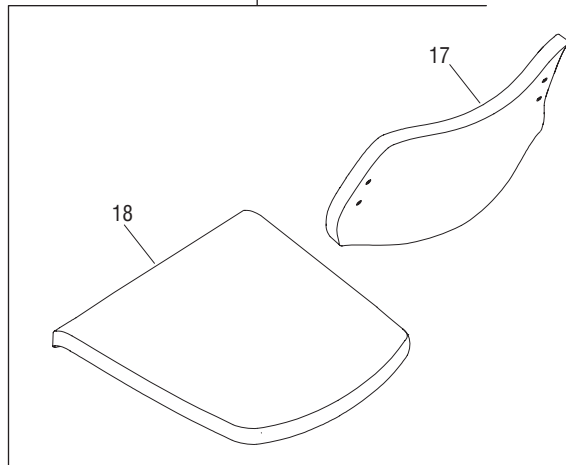


# Parts Diagram ■

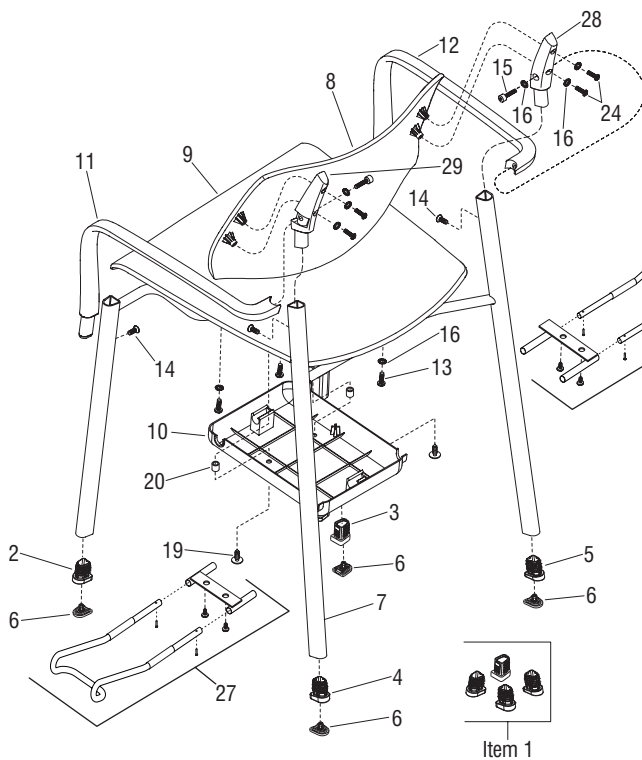
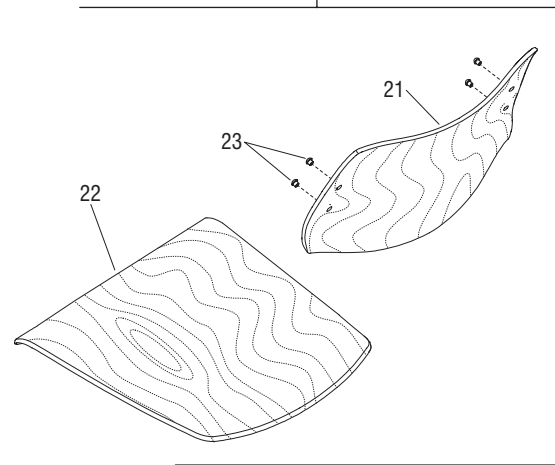
Katera™ 4-Leg Chair

September 2024

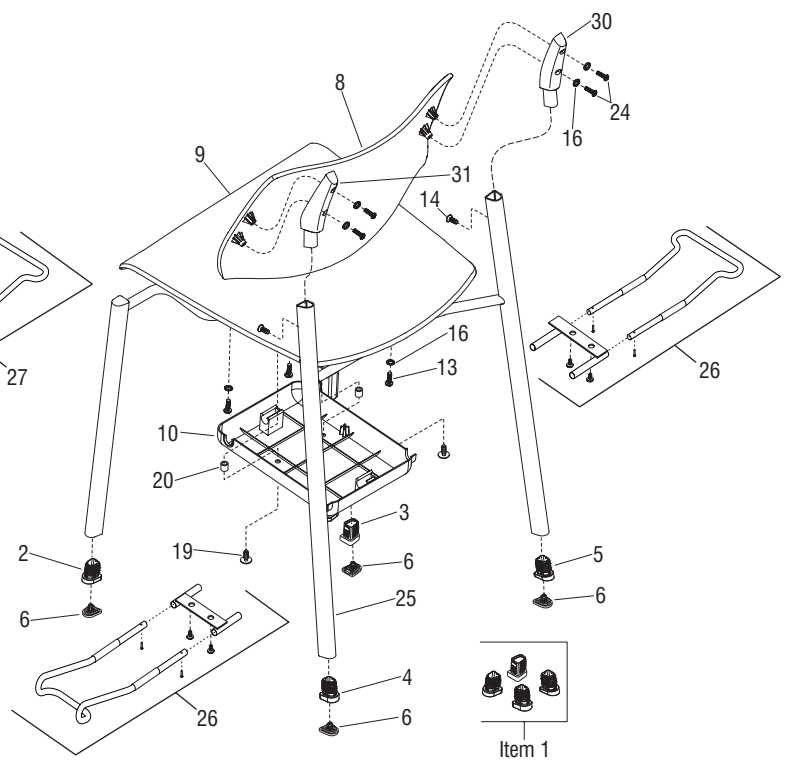
optional upholstered  
seat & back



optional wood  
seat & back



Armchair



Armless Chair

## ■ Katera™ 4-Leg Chair

### Parts Diagram

.XX = Select Color

Item 1 felt glides are replaced as a set of four.

Items 2, 3, 4 & 5 glide bodies are replaced individually and utilize Item 6 caps.

Items 7 & 25 frames must be configured and will have a choice of glides (Items 1 through 6) and backrest supports (Items 28 & 29 or 30 & 31) installed.

Item 14 used to install back supports.

If frames are requested with gangers, the gangers will also be installed (items 26 & 27). Two Item 19 push clips will ship KD.

Items 17 & 18 must be configured.

Item	Part Number	Item Description
1	KA.BR212	Glides, Felt (set of four 1A, 2B, 3C, 4D) (see note)
2	46.4520.1.BL	Glide Body, Front Left (see note)
3	46.4520.2.BL	Glide Body, Front Right (see note)
4	46.4520.3.BL	Glide Body, Rear Left (see note)
5	46.4520.4.BL	Glide Body, Rear Right (see note)
6	46.4522	Glide Cap, Snap-In Steel (see note)
	46.4521	Glide Cap, Snap-In Plastic (see note)
7	KT1F	Frame, Arm Chair (see note)
8	KA.BR11.XX	Back, Plastic (poly only)
9	KA.BR10.XX	Seat, Plastic (poly only)
10	KA.BR201	Underseat Plastic Stacking Piece, Black
11	KA.BR15.XX	Poly Arm, Left
12	KA.BR16.XX	Poly Arm, Right
13	12.AK.HW101	Torx Screw, M.6 x 20mm Stainless Button Head (effective 3/25/20) (poly and upholstered chair only)
	12.0275	Screw, #14 x 1" (wood chair only)
14	AK.HW044	Allen Screw, M.6 x 20mm C/P ZN/BLACK
	AK.HW038	Allen Screw, M.6 x 20mm C/P ZN/CHROME
15	12.AK.HW103	Torx Screw, M.6 x 30mm Stainless Button Head (armchair only) (effective 3/25/20)
16	12.0386	Star Washer, M.6 (effective 3/25/20)
17	KTRP	Upholstered Back, Replacement (uph. chair only)
18	KTRP	Upholstered Seat, Replacement (uph. chair only)
19	12.0869	Push Clip, Plastic
20	12.3066	Spacer, Plastic
21	KA.DA13.BXX	Back, Wood (wood chair only)
22	KA.DA12.BXX	Seat, Wood (wood chair only)
23	AK.HW062	Fastener, Button Head (wood chair only)
24	12.AK.HW101	Torx Screw, M.6 x 20mm Stainless Button Head (effective 3/25/20) (poly and upholstered chairs only)
	12.AK.HW102	Torx Screw, M.6 x 25mm Stainless Button Head (wood chair only) (effective 3/25/20)
25	KT1F	Frame, Armless Chair (see note)
26	KA.GANGER.NA	Ganger Kit, No Arm (includes both gangers, brackets and hardware)
27	KA.GANGER.WA	Ganger Kit, With Arm (includes both gangers, brackets and hardware)
28	KA.BR29R.XX	Backrest Support, Right, Armchair, Painted
	KA.BR27R	Backrest Support, Right, Armchair, Chrome
29	KA.BR29L.XX	Backrest Support, Left, Armchair, Painted
	KA.BR27L	Backrest Support, Left, Armchair, Chrome
30	KA.BR28R.XX	Backrest Support, Right, No Arm Chair, Painted
	KA.BR26R	Backrest Support, Right, No Arm Chair, Chrome
31	KA.BR28L.XX	Backrest Support, Left, No Arm Chair, Painted
	KA.BR26L	Backrest Support, Left, No Arm Chair, Chrome