



## Clamber Tiered Seating



Turn traditional seating rules upside down with Clamber reconfigurable, multi-level modular units. Designed for play, climbing, and collaboration, Clamber brings unmatched versatility with optional integrated walls and worksurfaces, effortlessly transforming any space.

# Key Features

---

## A Modular Tiered Seating

Linear and curved multi-level shapes support sitting, standing, or climbing. Laminate tier tops can be used to designate aisleways. Seating ganging kits are available and ordered separately.

## B Walls & Worksurfaces

Walls and integrated worksurfaces\* offer enhanced capabilities, support, and space division. Worksurface ganging kits and post leg kits are available and ordered separately.

\*Must order wall with worksurface mount and worksurface separately.

## C Sustainable Design

Tier tops are replaceable to easily update design or extend product lifespan.

## D Durability

Built to withstand daily use in high-traffic areas, materials are easy to clean or replace. A 600-pound weight rating ensures maximum durability.

## E Material Options

Match or contrast tier tops with a range of high-performance Pallas Textiles, KI Ingrade, or COM upholstery. Select thread color for the double-needle stitching. Laminate tier tops are available in various finish options.

## F Integrated Power

Available in four colors, optional power modules include 125V and USB-A+C ports with several location options. Each module has its own 3-prong plug.



# Styles

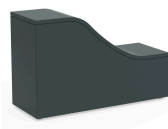
## One Tier



Straight  
W 24, 36, 48"  
D 18"  
H 15"



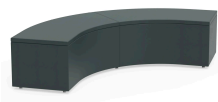
Square  
W36" D36" H15"



Wave  
W48" D18" H30"  
\*Available Left or Right



S-Curve  
W48" D18" H15"  
\*Available Left or Right



Inside Corner  
W76.5" D18" H15"



45° Inside Curve  
W70.25" D18" H15"



Half Round  
W36" D18.5" H15"

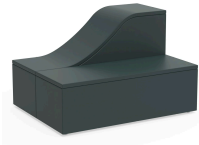


Half Oval  
W54" D18.25" H15"

## Two Tier



Straight  
W 24, 36, 48"  
D 36"  
H 30"  
Tier Height: 15"



Wave  
W48" D36" H30"  
Tier Height: 15"  
\*Available Left or Right



S-Curve  
W48" D36" H30"  
Tier Height: 15"  
\*Available Left or Right



Inside Corner  
W51" D36" H30"  
Tier Height: 15"



Outside Corner  
W51" D36" H30"  
Tier Height: 15"



45° Inside Curve  
W56.5" D36" H30"  
Tier Height: 15"

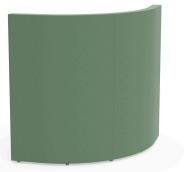


45° Outside Curve  
W56.5" D36" H30"  
Tier Height: 15"

Wall



Straight  
W 24, 36, 48"  
D 3"  
H 45"



Inside Corner  
W55.25" D3" H45"

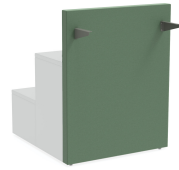


45° Inside Curve  
W58.5" D3" H45"



45° Outside Curve  
W29.75" D3" H45"

Wall with Worksurface Mount



Straight  
W 24, 36, 48"  
D 11.25"  
H 45"



Inside Corner  
W64.5" D11.25" H45"



45° Inside Curve  
W61.5" D11.25" H45"



45° Outside Curve  
W29.75" D11.25" H45"

Worksurface

\*Must Order with Wall with Worksurface Mount



Straight  
W 24, 36, 48"  
D 12"  
H 1.25"  
Assembled Height: 42"



Inside Corner  
W71.75" D12" H1.25"  
Assembled Height: 42"



45° Inside Curve  
W67.75" D12" H1.25"  
Assembled Height: 42"



45° Outside Curve  
W27" D12" H1.25"  
Assembled Height: 42"

# Options

---

## Power

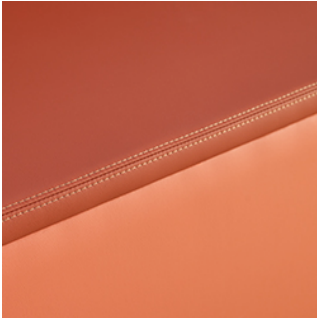


125V & USB-A+C

## Upholstery



Non-Contrast



Contrast

## Tier Top



Laminate



Upholstered

# Document Links

---

Brochure →

Pricing →

Idea Starters →

Videos →

Photography →

CAD/Revit Symbols →

Documents →

Material Approvals →

---

WARRANTY

Lifetime

WEIGHT RATING

600 lbs.