

Clamber™ Tiered Seating

May 2025

[illegible]

Clamber Tiered Seating

Introduction

Product Overview 3

Statement of Line 4

Planning with Additional Products 15

 Imaginasium Square Blips & Caddy 15

 C-Table & C-Table Max..... 16

Typical Configurations 17

Clamber Wall Guidelines..... 23

Clamber Wall with Worksurface Mount Guidelines 23

Clamber Wall Laminate Worksurface Guidelines 23

Specifying Top & Base Material 25

Upholstery Orientation 27

Laminate Orientation 30

Ganging Guidelines..... 33

 Ganging Requirements..... 34

 Ganging Location Recommendations..... 35

 Clamber Wall with Worksurface Ganging 37

Worksurface Leg Kit 38

Electrical

Power Modules 39

Power Module Locations..... 40

**CLAMBER
MODULAR
LOUNGE
SEATING**

Product Overview

Dare to Play. Dare to Climb. Dare to Clamber.

Clamber tiered seating reimagines how users of all ages interact with their environment. Designed with modular, linear, and curved shapes in multi-level configurations, Clamber offers a playful solution perfect for team collaboration, student learning, individual study, and relaxation.

Its versatility frees users from the ordinary, empowering them to choose where and how they sit, stand, and clamber.

With reconfigurable units, tier-top material choice, and replaceability, Clamber invites you to continuously reinvent any dynamic environment, making it an adaptable, fun seating solution for evolving spaces.

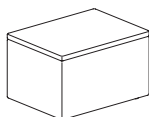
Unleash your creativity with Clamber's expansive statement of line, offering modular units, unique shapes, and wall elements with endless possibilities. Explore options like matching or contrasting upholstery, power integration, and custom thread colors to create a truly unique look. For added function, Clamber also offers a variety of laminate top and wall worksurface finishes to bring both style and utility to every design.

Dimensional Tolerance

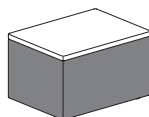
Due to variations in foam and upholstery in the manufacturing process, all units have a dimensional tolerance of up to $+\frac{1}{4}$ " (width & depth) when fitting together, or into spaces. The tolerance is compounded as more units are added into a configuration. For example: Two 48" units side-to-side should factor in a possible overall width of $96\frac{1}{2}$ " ($+\frac{1}{4}$ " per unit).

Statement of Line

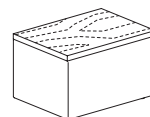
One-Tier Seating



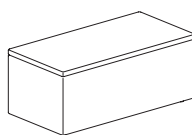
Straight - 24" Wide
Upholstered Top
Non-Contrast
24" W x 18" D x 15" H
CL1R2U



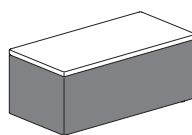
Straight - 24" Wide
Upholstered Top
Contrast
24" W x 18" D x 15" H
CL1R2UFC



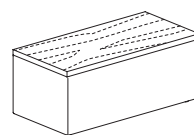
Straight - 24" Wide
Laminate Top
Non-Contrast
24" W x 18" D x 15" H
CL1R2L



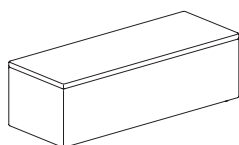
Straight - 36" Wide
Upholstered Top
Non-Contrast
36" W x 18" D x 15" H
CL1R3U



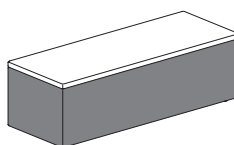
Straight - 36" Wide
Upholstered Top
Contrast
36" W x 18" D x 15" H
CL1R3UFC



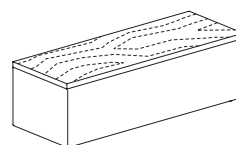
Straight - 36" Wide
Laminate Top
Non-Contrast
36" W x 18" D x 15" H
CL1R3L



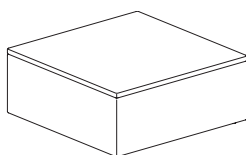
Straight - 48" Wide
Upholstered Top
Non-Contrast
48" W x 18" D x 15" H
CL1R4U



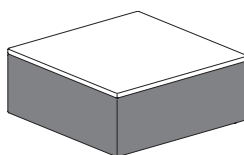
Straight - 48" Wide
Upholstered Top
Contrast
48" W x 18" D x 15" H
CL1R4UFC



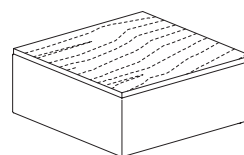
Straight - 48" Wide
Laminate Top
Non-Contrast
48" W x 18" D x 15" H
CL1R4L



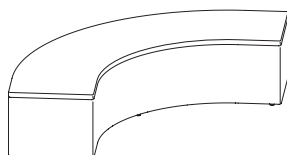
Square - 36" Wide
Upholstered Top
Non-Contrast
35³/₄" W x 35¹/₄" D x 15" H
CL1SQU



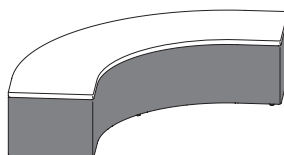
Square - 36" Wide
Upholstered Top
Contrast
35³/₄" W x 35¹/₄" D x 15" H
CL1SQUFC



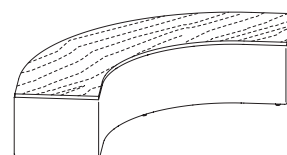
Square - 36" Wide
Laminate Top
Non-Contrast
35³/₄" W x 35¹/₄" D x 15" H
CL1SQL



Inside Corner
Upholstered Top
Non-Contrast
76¹/₂" W x 18" D x 15" H
CL1CNU



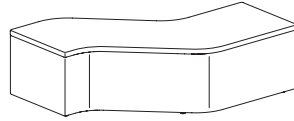
Inside Corner
Upholstered Top
Contrast
75⁷/₈" W x 18" D x 15" H
CL1CNUFC



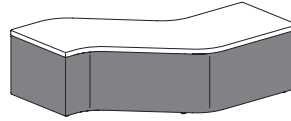
Inside Corner
Laminate Top
Non-Contrast
76¹/₂" W x 18" D x 15" H
CL1CNL

Statement of Line
(cont.)

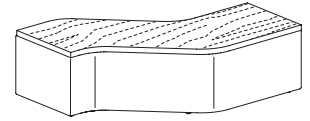
One-Tier Seating (cont.)



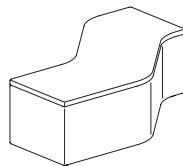
S-Curve - Left
Upholstered Top
Non-Contrast
48" W x 18" D x 15" H
CL1SLU



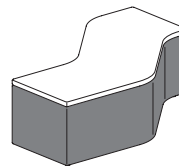
S-Curve - Left
Upholstered Top
Contrast
48" W x 18" D x 15" H
CL1SLUFC



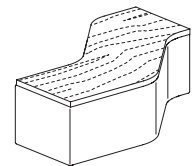
S-Curve - Left
Laminate Top
Non-Contrast
48" W x 18" D x 15" H
CL1SLL



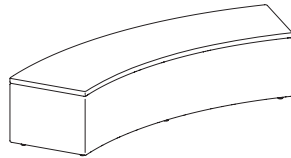
S-Curve - Right
Upholstered Top
Non-Contrast
48" W x 18" D x 15" H
CL1SRU



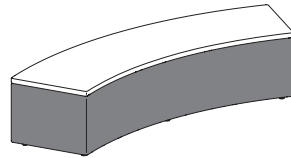
S-Curve - Right
Upholstered Top
Contrast
48" W x 18" D x 15" H
CL1SRUFC



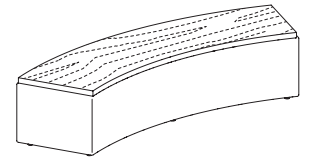
S-Curve - Right
Laminate Top
Non-Contrast
48" W x 18" D x 15" H
CL1SRL



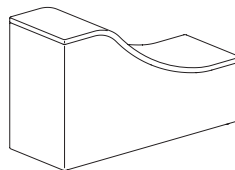
Inside Curve - 45 Degree
Upholstered Top
Non-Contrast
70 1/4" W x 18" D x 15" H
CL1VNU



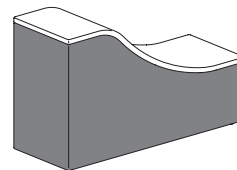
Inside Curve - 45 Degree
Upholstered Top
Contrast
70 1/4" W x 18" D x 15" H
CL1VNUFC



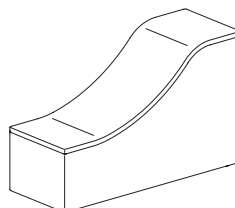
Inside Curve - 45 Degree
Laminate Top
Non-Contrast
70 1/4" W x 18" D x 15" H
CL1VNL



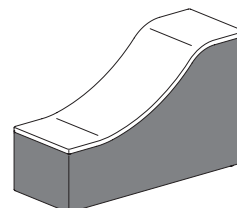
Wave - Left
Upholstered Top
Non-Contrast
48" W x 18" D x 30" H
CL1WLU



Wave - Left
Upholstered Top
Contrast
48" W x 18" D x 30" H
CL1WLUFC



Wave - Right
Upholstered Top
Non-Contrast
48" W x 18" D x 30" H
CL1WRU



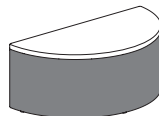
Wave - Right
Upholstered Top
Contrast
48" W x 18" D x 30" H
CL1WRUFC

**Statement of Line
(cont.)**

One-Tier Seating (cont.)



Half-Round - 36" Wide
Upholstered Top
Non-Contrast
36" W x 18½" D x 15" H
CL1HRU



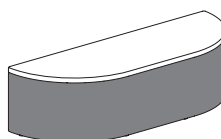
Half-Round - 36" Wide
Upholstered Top
Contrast
36" W x 18½" D x 15" H
CL1HRUFC



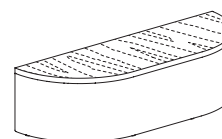
Half-Round - 36" Wide
Laminate Top
Non-Contrast
36" W x 18½" D x 15" H
CL1HRL



Half Oval - 54" Wide
Upholstered Top
Non-Contrast
54" W x 18¼" D x 15" H
CL1HUV

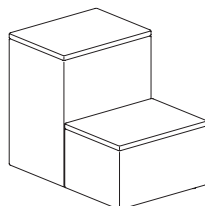


Half Oval - 54" Wide
Upholstered Top
Contrast
54" W x 18¼" D x 15" H
CL1HUVFC

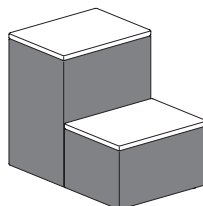


Half Oval - 54" Wide
Laminate Top
Non-Contrast
54" W x 18¼" D x 15" H
CL1HVL

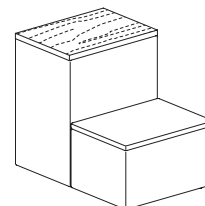
Two-Tiered Seating



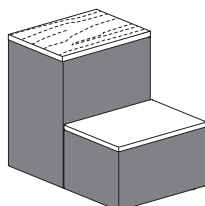
Straight - 24" Wide
Upholstered Top on Both Tiers
Non-Contrast
24" W x 36" D x 30" H
CL2R2UU



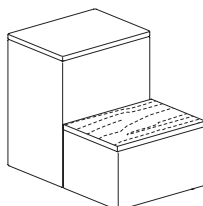
Straight - 24" Wide
Upholstered Top on Both Tiers
Contrast
24" W x 36" D x 30" H
CL2R2UFC



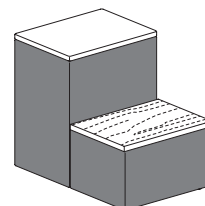
Straight - 24" Wide
Laminate Top on Upper Tier
Upholstered Top on Lower Tier
Non-Contrast
24" W x 36" D x 30" H
CL2R2UL



Straight - 24" Wide
Laminate Top on Upper Tier
Upholstered Top on Lower Tier
Contrast
24" W x 36" D x 30" H
CL2R2ULFC



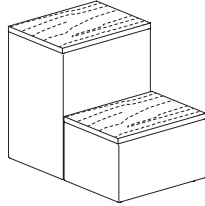
Straight - 24" Wide
Upholstered Top on Upper Tier
Laminate Top on Lower Tier
Non-Contrast
24" W x 36" D x 30" H
CL2R2LU



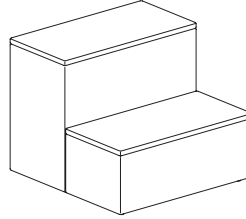
Straight - 24" Wide
Upholstered Top on Upper Tier
Laminate Top on Lower Tier
Contrast
24" W x 36" D x 30" H
CL2R2LUFC

Statement of Line
(cont.)

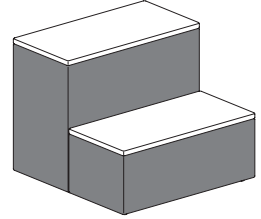
Two-Tiered Seating (cont.)



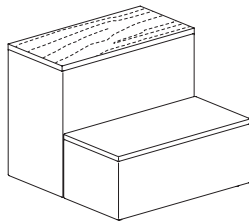
Straight - 24" Wide
Laminate Top on Both Tiers
Non-Contrast
24" W x 36" D x 30" H
CL2R2LL



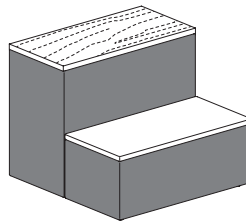
Straight - 36" Wide
Upholstered Top on Both Tiers
Non-Contrast
36" W x 36" D x 30" H
CL2R3UU



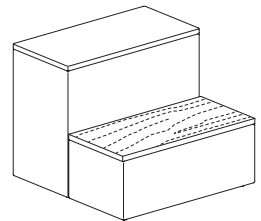
Straight - 36" Wide
Upholstered Top on Both Tiers
Contrast
36" W x 36" D x 30" H
CL2R3UUF



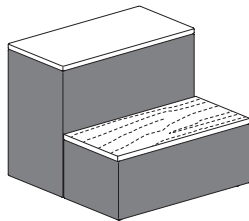
Straight - 36" Wide
Laminate Top on Upper Tier
Upholstered Top on Lower Tier
Non-Contrast
36" W x 36" D x 30" H
CL2R3UL



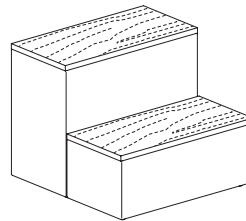
Straight - 36" Wide
Laminate Top on Upper Tier
Upholstered Top on Lower Tier
Contrast
36" W x 36" D x 30" H
CL2R3ULFC



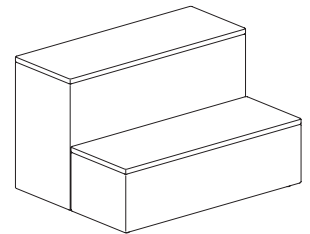
Straight - 36" Wide
Upholstered Top on Upper Tier
Laminate Top on Lower Tier
Non-Contrast
36" W x 36" D x 30" H
CL2R3LU



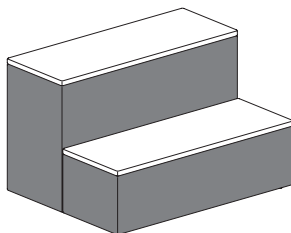
Straight - 36" Wide
Upholstered Top on Upper Tier
Laminate Top on Lower Tier
Contrast
36" W x 36" D x 30" H
CL2R3LUF



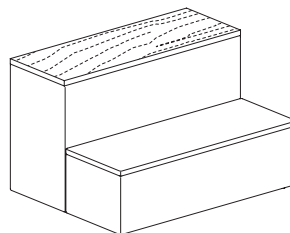
Straight - 36" Wide
Laminate Top on Both Tiers
Non-Contrast
36" W x 36" D x 30" H
CL2R3LL



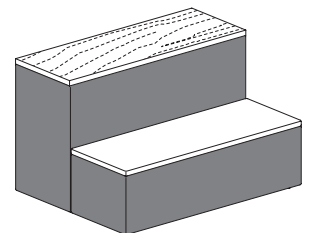
Straight - 48" Wide
Upholstered Top on Both Tiers
Non-Contrast
48" W x 36" D x 30" H
CL2R4UU



Straight - 48" Wide
Upholstered Top on Both Tiers
Contrast
48" W x 36" D x 30" H
CL2R4UUF



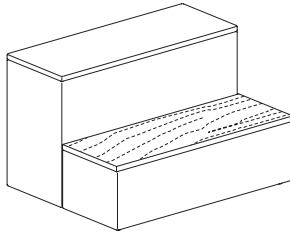
Straight - 48" Wide
Laminate Top on Upper Tier
Upholstered Top on Lower Tier
Non-Contrast
48" W x 36" D x 30" H
CL2R4UL



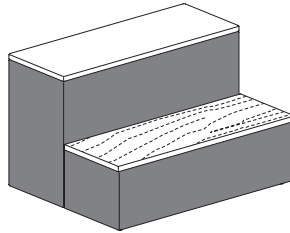
Straight - 48" Wide
Laminate Top on Upper Tier
Upholstered Top on Lower Tier
Contrast
48" W x 36" D x 30" H
CL2R4ULFC

Statement of Line
(cont.)

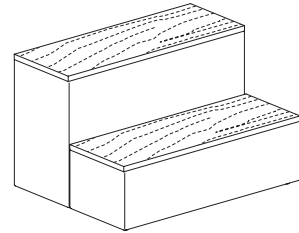
Two-Tiered Seating



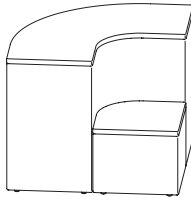
Straight - 48" Wide
Upholstered Top on Upper Tier
Laminate Top on Lower Tier
Non-Contrast
48" W x 36" D x 30" H
CL2R4LU



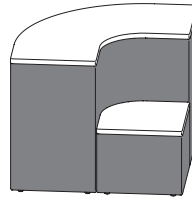
Straight - 48" Wide
Upholstered Top on Upper Tier
Laminate Top on Lower Tier
Contrast
48" W x 36" D x 30" H
CL2R4LUF



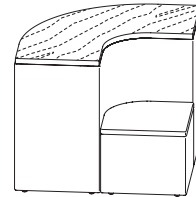
Straight - 48" Wide
Laminate Top on Both Tiers
Non-Contrast
48" W x 36" D x 30" H
CL2R4LL



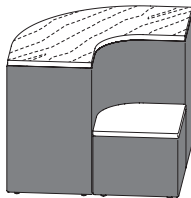
Inside Corner
Upholstered Top on Both Tiers
Non-Contrast
51" W x 36" D x 30" H
CL2CNUU



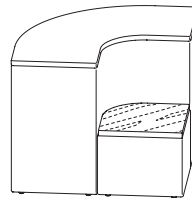
Inside Corner
Upholstered Top on Both Tiers
Contrast
51" W x 36" D x 30" H
CL2CNUUF



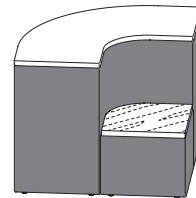
Inside Corner
Laminate Top on Upper Tier
Upholstered Top on Lower Tier
Non-Contrast
51" W x 36" D x 30" H
CL2CNUL



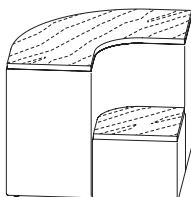
Inside Corner
Laminate Top on Upper Tier
Upholstered Top on Lower Tier
Contrast
51" W x 36" D x 30" H
CL2CNULF



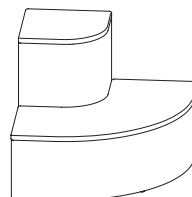
Inside Corner
Upholstered Top on Upper Tier
Laminate Top on Lower Tier
Non-Contrast
51" W x 36" D x 30" H
CL2CNLU



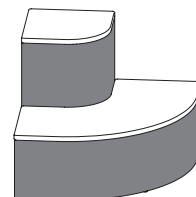
Inside Corner
Upholstered Top on Upper Tier
Laminate Top on Lower Tier
Contrast
51" W x 36" D x 30" H
CL2CNLUF



Inside Corner
Laminate Top on Both Tiers
Non-Contrast
51" W x 36" D x 30" H
CL2CNLL



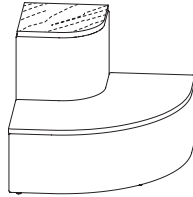
Outside Corner
Upholstered Top on Both Tiers
Non-Contrast
51" W x 36" D x 30" H
CL2CTUU



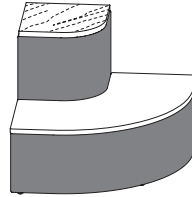
Outside Corner
Upholstered Top on Both Tiers
Contrast
51" W x 36" D x 30" H
CL2CTUUF

Statement of Line
(cont.)

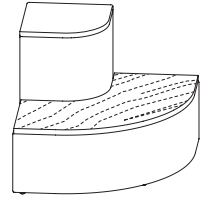
Two-Tiered Seating (cont.)



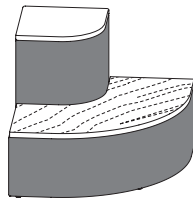
Outside Corner
Laminate Top on Upper Tier
Upholstered Top on Lower Tier
Non-Contrast
51" W x 36" D x 30" H
CL2CTUL



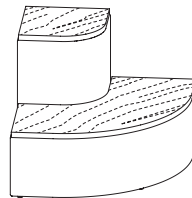
Outside Corner
Laminate Top on Upper Tier
Upholstered Top on Lower Tier
Contrast
51" W x 36" D x 30" H
CL2CTULFC



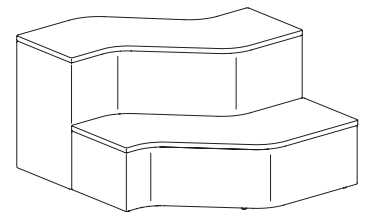
Outside Corner
Upholstered Top on Upper Tier
Laminate Top on Lower Tier
Non-Contrast
51" W x 36" D x 30" H
CL2CTLU



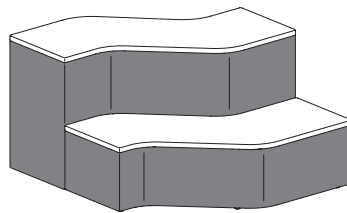
Outside Corner
Upholstered Top on Upper Tier
Laminate Top on Lower Tier
Contrast
51" W x 36" D x 30" H
CL2CTLUFC



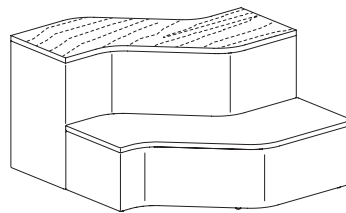
Outside Corner
Laminate Top on Both Tiers
Non-Contrast
51" W x 36" D x 30" H
CL2CTLL



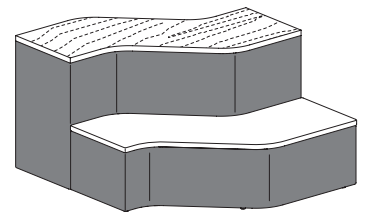
S-Curve - Left
Upholstered Top on Both Tiers
Non-Contrast
48" W x 36" D x 30" H
CL2SLUU



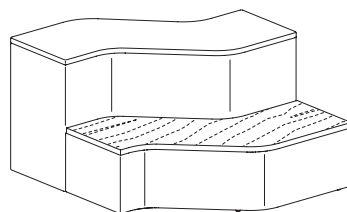
S-Curve - Left
Upholstered Top on Both Tiers
Contrast
48" W x 36" D x 30" H
CL2SLUFC



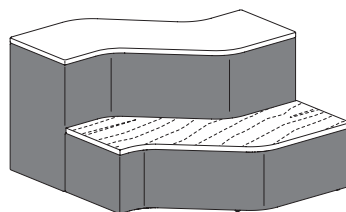
S-Curve - Left
Laminate Top on Upper Tier
Upholstered Top on Lower Tier
Non-Contrast
48" W x 36" D x 30" H
CL2SLUL



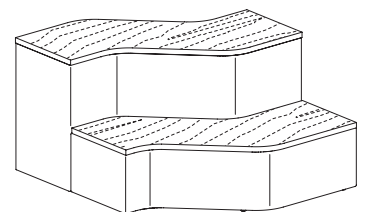
S-Curve - Left
Laminate Top on Upper Tier
Upholstered Top on Lower Tier
Contrast
48" W x 36" D x 30" H
CL2SLULFC



S-Curve - Left
Upholstered Top on Upper Tier
Laminate Top on Lower Tier
Non-Contrast
48" W x 36" D x 30" H
CL2SLLU



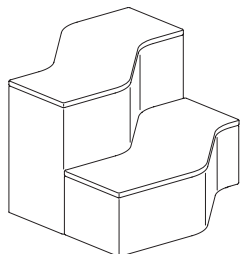
S-Curve - Left
Upholstered Top on Upper Tier
Laminate Top on Lower Tier
Contrast
48" W x 36" D x 30" H
CL2SLLUFC



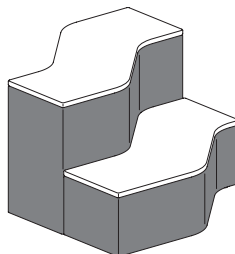
S-Curve - Left
Laminate Top on Both Tiers
Non-Contrast
48" W x 36" D x 30" H
CL2SLLL

Statement of Line
(cont.)

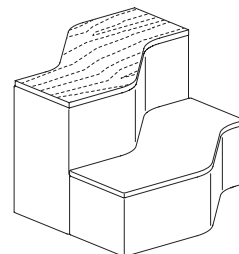
Two-Tiered Seating (cont.)



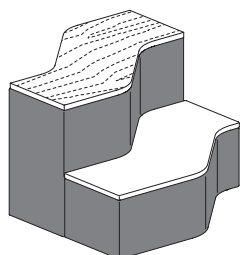
S-Curve - Right
Upholstered Top on Both Tiers
Non-Contrast
48" W x 36" D x 30" H
CL2SRUU



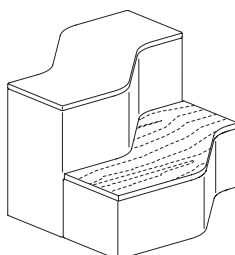
S-Curve - Right
Upholstered Top on Both Tiers
Contrast
48" W x 36" D x 30" H
CL2SRUUC



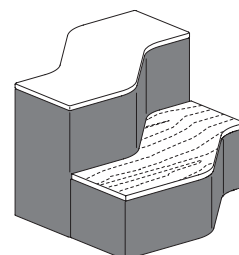
S-Curve - Right
Laminate Top on Upper Tier
Upholstered Top on Lower Tier
Non-Contrast
48" W x 36" D x 30" H
CL2SRUL



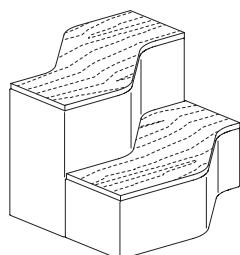
S-Curve - Right
Laminate Top on Upper Tier
Upholstered Top on Lower Tier
Contrast
48" W x 36" D x 30" H
CL2SRULFC



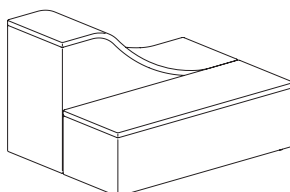
S-Curve - Right
Upholstered Top on Upper Tier
Laminate Top on Lower Tier
Non-Contrast
48" W x 36" D x 30" H
CL2SRUL



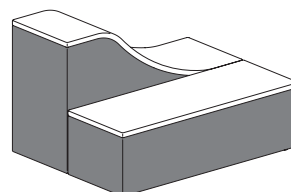
S-Curve - Right
Upholstered Top on Upper Tier
Laminate Top on Lower Tier
Contrast
48" W x 36" D x 30" H
CL2SRULFC



S-Curve - Right
Laminate Top on Both Tiers
Non-Contrast
48" W x 36" D x 30" H
CL2SRLL



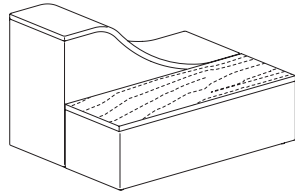
Wave - Left
Upholstered Top on Both Tiers
Non-Contrast
48" W x 36" D x 30" H
CL2WLUU



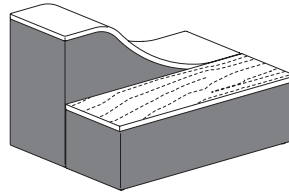
Wave - Left
Upholstered Top on Both Tiers
Contrast
48" W x 36" D x 30" H
CL2WLUUC

Statement of Line
(cont.)

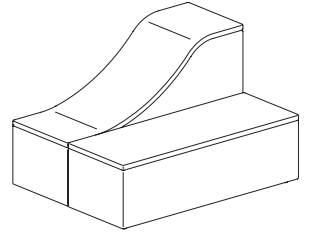
Two-Tiered Seating (cont.)



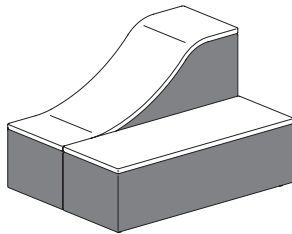
Wave - Left
Upholstered Top on Upper Tier
Laminate Top on Lower Tier
Non-Contrast
48" W x 36" D x 30" H
CL2WLLU



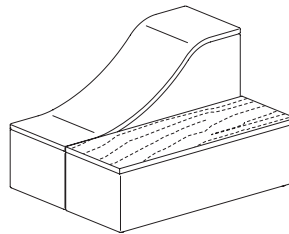
Wave - Left
Upholstered Top on Upper Tier
Laminate Top on Lower Tier
Contrast
48" W x 36" D x 30" H
CL2WLLUFC



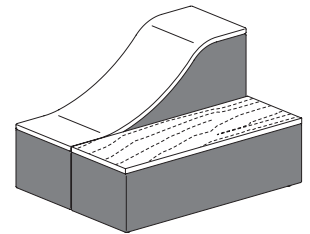
Wave - Right
Upholstered Top on Both Tiers
Non-Contrast
48" W x 36" D x 30" H
CL2WUU



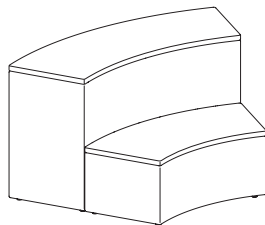
Wave - Right
Upholstered Top on Both Tiers
Contrast
48" W x 36" D x 30" H
CL2WUUFC



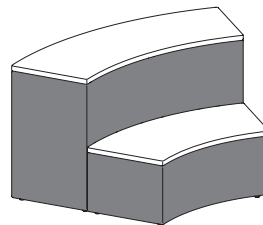
Wave - Right
Upholstered Top on Upper Tier
Laminate Top on Lower Tier
Non-Contrast
48" W x 36" D x 30" H
CL2WRLU



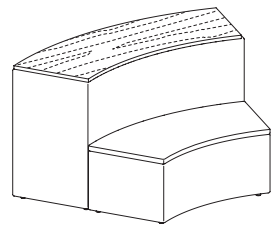
Wave - Right
Upholstered Top on Upper Tier
Laminate Top on Lower Tier
Contrast
48" W x 36" D x 30" H
CL2WRLUFC



Inside Curve - 45 Degree
Upholstered Top on Both Tiers
Non-Contrast
56½" W x 36" D x 30" H
CL2VUU



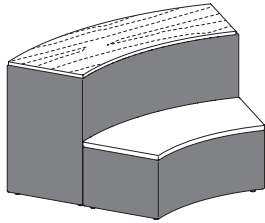
Inside Curve - 45 Degree
Upholstered Top on Both Tiers
Contrast
56½" W x 36" D x 30" H
CL2VUUFC



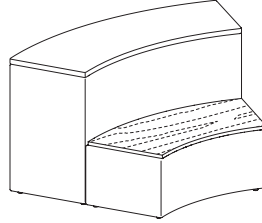
Inside Curve - 45 Degree
Laminate Top on Upper Tier
Upholstered Top on Lower Tier
Non-Contrast
56½" W x 36" D x 30" H
CL2VNUL

Statement of Line
(cont.)

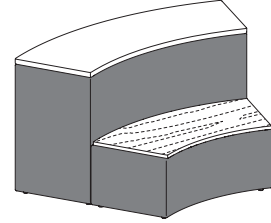
Two-Tiered Seating (cont.)



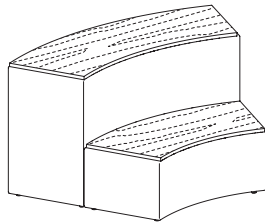
Inside Curve - 45 Degree
Laminate Top on Upper Tier
Upholstered Top on Lower Tier
Contrast
56½" W x 36" D x 30" H
CL2VNULFC



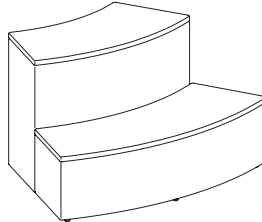
Inside Curve - 45 Degree
Upholstered Top on Upper Tier
Laminate Top on Lower Tier
Non-Contrast
56½" W x 36" D x 30" H
CL2VNU



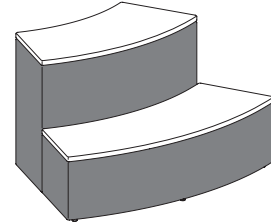
Inside Curve - 45 Degree
Upholstered Top on Upper Tier
Laminate Top on Lower Tier
Contrast
56½" W x 36" D x 30" H
CL2VNUFC



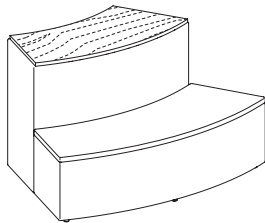
Inside Curve - 45 Degree
Laminate Top on Both Tiers
Non-Contrast
56½" W x 36" D x 30" H
CL2VNLL



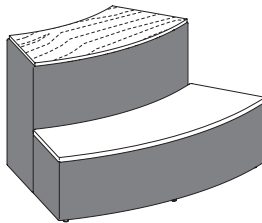
Outside Curve - 45 Degree
Upholstered Top on Both Tiers
Non-Contrast
56½" W x 36" D x 30" H
CL2VTUU



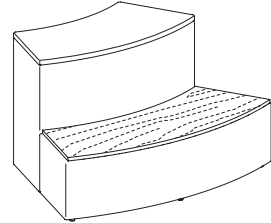
Outside Curve - 45 Degree
Upholstered Top on Both Tiers
Contrast
56½" W x 36" D x 30" H
CL2VTUFC



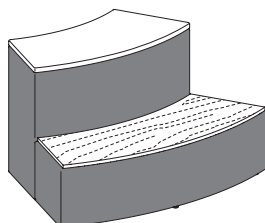
Outside Curve - 45 Degree
Laminate Top on Upper Tier
Upholstered Top on Lower Tier
Non-Contrast
56½" W x 36" D x 30" H
CL2VTUL



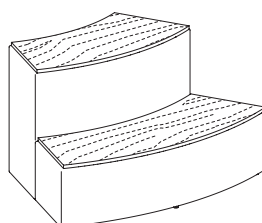
Outside Curve - 45 Degree
Laminate Top on Upper Tier
Upholstered Top on Lower Tier
Contrast
56½" W x 36" D x 30" H
CL2VTULFC



Outside Curve - 45 Degree
Upholstered Top on Upper Tier
Laminate Top on Lower Tier
Non-Contrast
56½" W x 36" D x 30" H
CL2VTLU



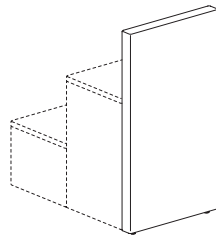
Outside Curve - 45 Degree
Upholstered Top on Upper Tier
Laminate Top on Lower Tier
Contrast
56½" W x 36" D x 30" H
CL2VTUFC



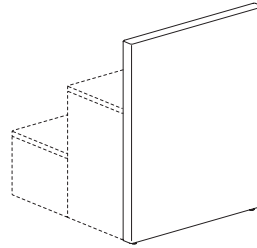
Outside Curve - 45 Degree
Laminate Top on Both Tiers
Non-Contrast
56½" W x 36" D x 30" H
CL2VTLL

Statement of Line
(cont.)

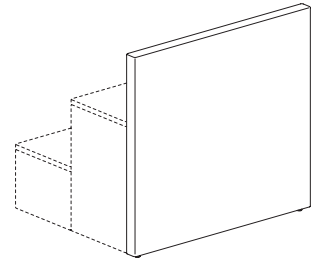
Walls



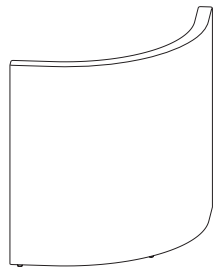
Straight - 24" Wide
24" W x 3" D x 45" H
CLWR2N



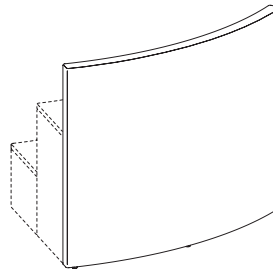
Straight - 36" Wide
36" W x 3" D x 45" H
CLWR3N



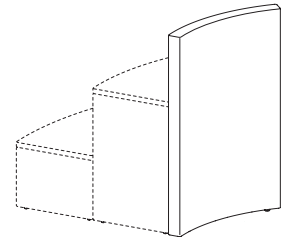
Straight - 48" Wide
48" W x 3" D x 45" H
CLWR4N



Inside Corner
55 1/4" W x 3" D x 45" H
CLWCNN

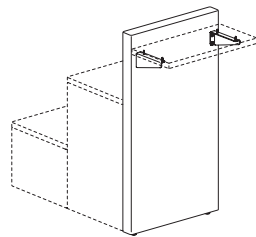


Inside Curve - 45 Degree
58 1/2" W x 3" D x 45" H
CLWVNN

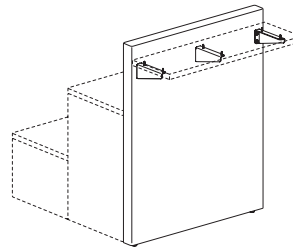


Outside Curve - 45 Degree
29 3/4" W x 3" D x 45" H
CLWVTN

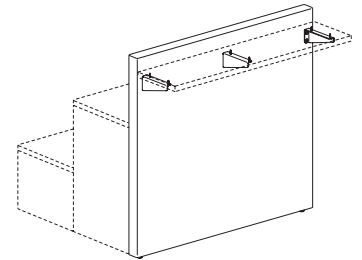
Walls with Worksurface Mount



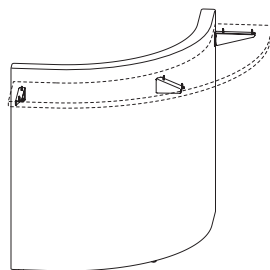
Straight - 24" Wide
24" W x 11 1/4" D x 45" H
CLSR2N



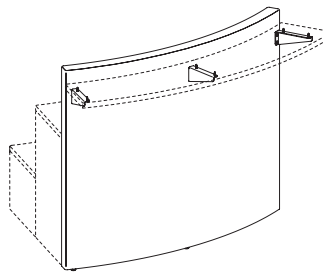
Straight - 36" Wide
36" W x 11 1/4" D x 45" H
CLSR3N



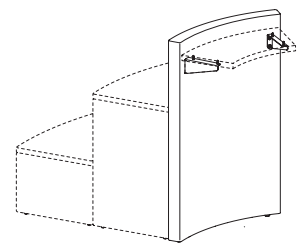
Straight - 48" Wide
48" W x 11 1/4" D x 45" H
CLSR4N



Inside Corner
64 1/2" W x 11 1/4" D x 45" H
CLSCNN



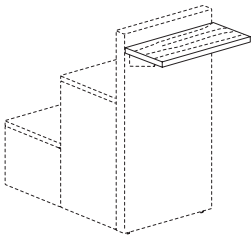
Inside Curve - 45 Degree
61 1/2" W x 11 1/4" D x 45" H
CLSVNN



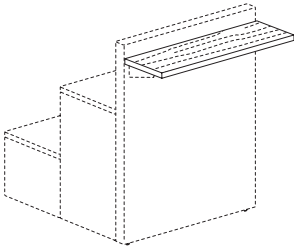
Outside Curve - 45 Degree
29 3/4" W x 11 1/4" D x 45" H
CLSVTN

Statement of Line
(cont.)

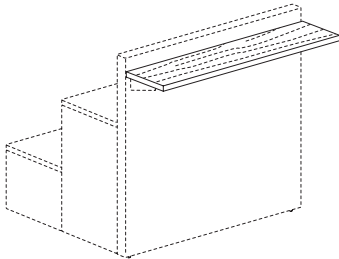
Laminate Worksurfaces



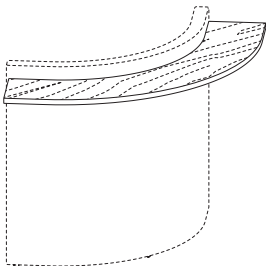
Straight - 24" Wide
23¹⁵/₁₆" W x 12" D x 1¹/₄" H
CLAWSRT24-74P



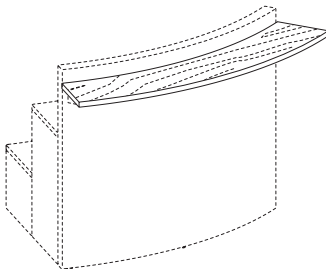
Straight - 36" Wide
35¹⁵/₁₆" W x 12" D x 1¹/₄" H
CLAWSRT36-74P



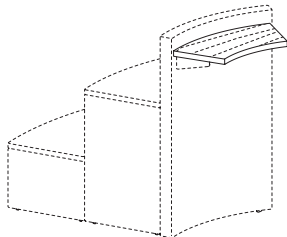
Straight - 48" Wide
47¹⁵/₁₆" W x 12" D x 1¹/₄" H
CLAWSRT48-74P



Inside Corner
71³/₄" W x 12" D x 1¹/₄" H
CLAWSCN-74P

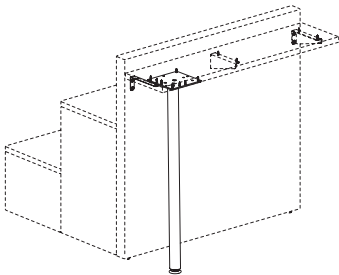


Inside Curve - 45 Degree
67³/₄" W x 12" D x 1¹/₄" H
CLAWSVN-74P



Outside Curve - 45 Degree
27" W x 12" D x 1¹/₄" H
CLAWSVT-74P

Worksurface Leg Kits



Worksurface Leg Kit
CLAWLEG

Planning with Additional Products

Imaginasium Square Blips & Caddy

Imaginasium square blips are designed to fit and add comfort to the top of any Clamber tier. They can also be positioned on the floor to provide a ground level tier and support ground level learning.

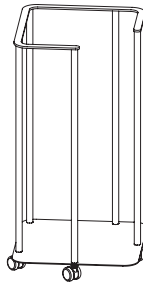
The seat height for every tier on Clamber is 15", while Imaginasium square blips have a height of 3". When utilized together they provide a standard seat height of 18".

Caddies can be utilized to keep spaces looking neat and tidy while square blips are not in use.

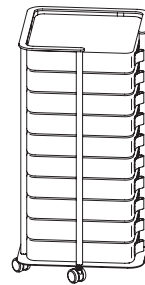
Statement of Line



Square Blip
MGBPSPAD



Square Mobile Storage Caddy
MGBPSCADDY



Square Mobile Storage Caddy
with ten Square Blips
MGBP10SPADCAD

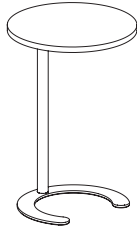
**Planning with
Additional
Products (cont.)**

C-Table & C-Table Max

Clamber's glide design provides a clearance of $\frac{3}{4}$ " beneath the unit, with $\frac{1}{2}$ " adjustment for floor leveling to allow for planning with C-Table & C-Table Max.

Statement of Line

C-Table Max

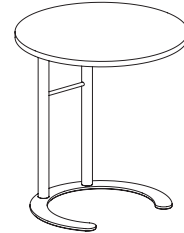


CTBL

C-Table Max



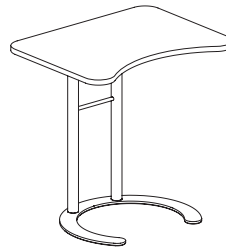
24" x 30" Rectangular Table
CMDGA2430 (26" Fixed-Height)
CMDAA2430 (29" Fixed-Height)
CMDEA2430 (Adjustable-Height)



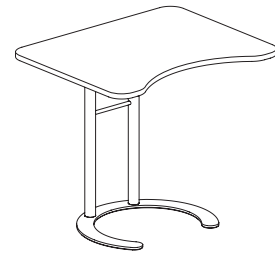
Round Table
CMDGB24 (26" Fixed-Height)
CMDAB24 (29" Fixed-Height)
CMDEB24 (Adjustable-Height)



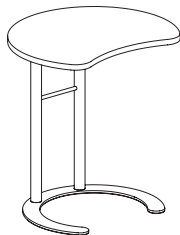
Square Table
CMDGC26 (26" Fixed-Height)
CMDAC26 (29" Fixed-Height)
CMDEC26 (Adjustable-Height)



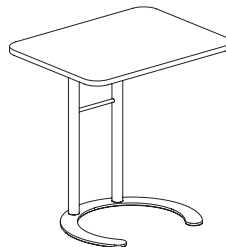
20" x 26" Rectangular Table
with Comfort Curve
CMDGN2026 (26" Fixed-Height)
CMDAN2026 (29" Fixed-Height)
CMDEN2026 (Adjustable-Height)



24" x 30" Rectangular Table
with Comfort Curve
CMDGN2430 (26" Fixed-Height)
CMDAN2430 (29" Fixed-Height)
CMDEN2430 (Adjustable-Height)



Round Table with Comfort Curve
CMDGP24 (26" Fixed-Height)
CMDAP24 (29" Fixed-Height)
CMDEP24 (Adjustable-Height)

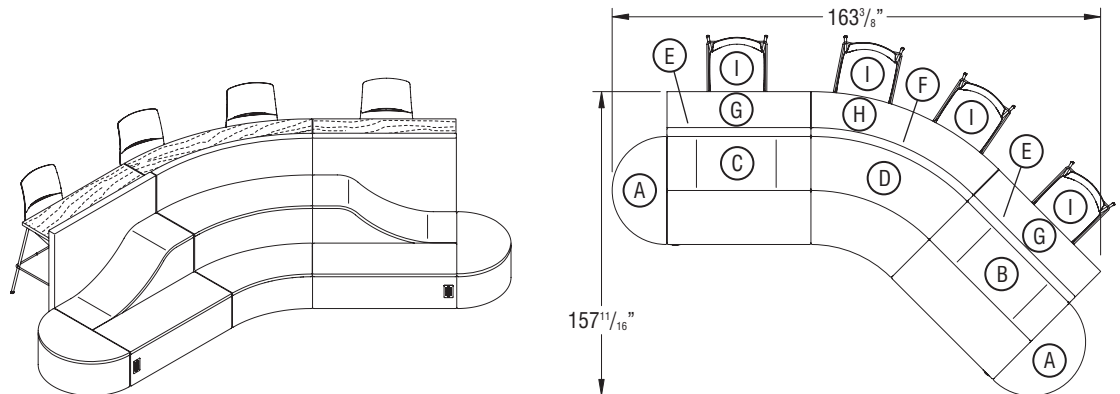


20" x 26" Rectangular Table
CMDGA2026 (26" Fixed-Height)
CMDAA2026 (29" Fixed-Height)
CMDEA2026 (Adjustable-Height)

Typical Configurations

Typical Configuration 1

Item	Qty	Model	
A	2	CL1HRU	Clamber One-Tier Seating, 36" Wide, Half-Round, Fully Upholstered
B	1	CL2WLUU	Clamber Two-Tier Seating, 48" Wide, Wave Left, Fully Upholstered
C	1	CL2WRUU	Clamber Two-Tier Seating, 48" Wide, Wave Right, Fully Upholstered
D	1	CL2VNUU	Clamber Two-Tier Seating, 45 Degree, Inside Curve, Fully Upholstered
E	2	CLSR4N	Clamber Wall, 48" Wide, Straight, Fully Upholstered with Worksurface Mount*
F	1	CLSVNN	Clamber Wall, 45 Degree, Inside Curve, Fully Upholstered with Worksurface Mount
G	2	CLAWSRT48-74P	Clamber Wall, 48" Wide, Straight, Laminate Worksurface
H	1	CLAWSVN-74P	Clamber Wall, 45 Degree, Inside Curve, Laminate Worksurface
I	4	LL4100H30	Limelite Four-Leg Armless Cafe Stool, 30" High
	2	CLAGKSG	Clamber Tiered Seating Ganging Kit (optional)**
	2	CLAGKWG	Clamber Wall, Worksurface Ganging Kit (optional)**

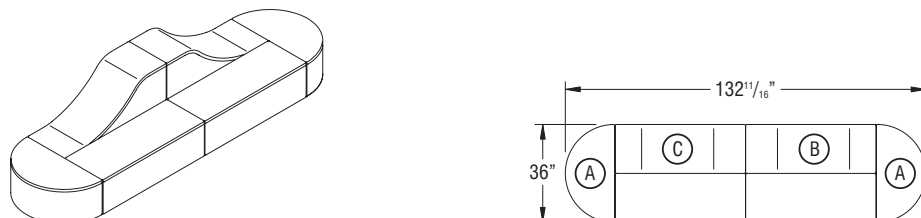


*Each Clamber wall (CLSR4) includes a tiered seating ganging kit (CLAGKSG). Any two-tiered seating, wave - left and - right (CL2WL and CL2WR) and wall with worksurface - straight - 48" wide (CLSR4 & CLAWSRT48) must be ganged to another two-tiered seating unit, side-by-side.

**Ganging kits (CLAGKSG & CLAGKWG) are also available separately for connecting additional units together.

Typical Configuration 2

Item	Qty	Model	
A	2	CL1HRU	Clamber One-Tier Seating, 36" Wide, Half-Round, Fully Upholstered
B	1	CL2WLUU	Clamber Two-Tier Seating, 48" Wide, Wave Left, Fully Upholstered
C	1	CL2WRUU	Clamber Two-Tier Seating, 48" Wide, Wave Right, Fully Upholstered
	3	CLAGKSG	Clamber Tiered Seating Ganging Kit (optional)**

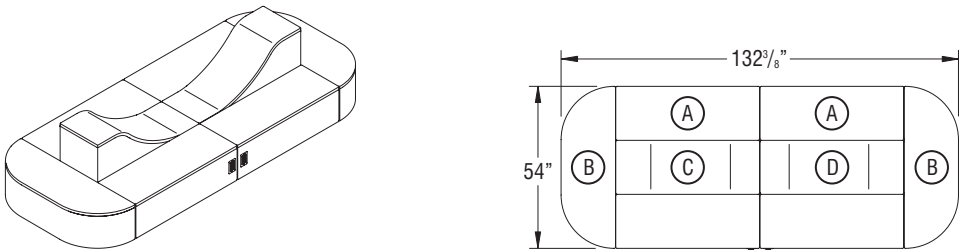


**Tiered seating ganging kits (CLAGKSG) are available separately for connecting units together.

Typical Configurations (cont.)

Typical Configuration 3

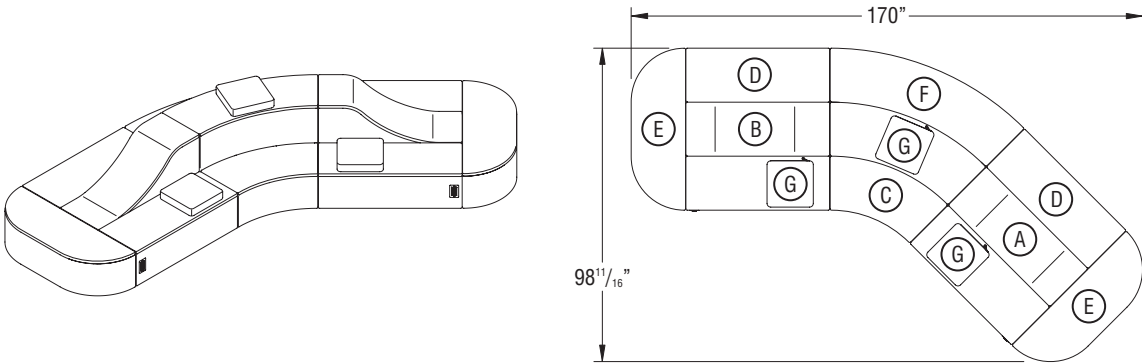
Item	Qty	Model	
A	2	CL1R4U	Clamber One-Tier Seating, 48" Wide, Straight, Fully Upholstered
B	2	CL1HVU	Clamber One-Tier Seating, 54" Wide, Half-Oval, Fully Upholstered
C	1	CL2WLUU	Clamber Two-Tier Seating, 48" Wide, Wave Left, Fully Upholstered
D	1	CL2WRUU	Clamber Two-Tier Seating, 48" Wide, Wave Right, Fully Upholstered
	4	CLAGKSG	Clamber Tiered Seating Ganging Kit (optional)**



**Tiered seating ganging kits (CLAGKSG) are available separately for connecting units together.

Typical Configuration 4

Item	Qty	Model	
A	1	CL2WLUU	Clamber Two-Tier Seating, 48" Wide, Wave Left, Fully Upholstered
B	1	CL2WRUU	Clamber Two-Tier Seating, 48" Wide, Wave Right, Fully Upholstered
C	1	CL2VNUU	Clamber Two-Tier Seating, 45 Degree, Inside Curve, Fully Upholstered
D	2	CL1R4U	Clamber One-Tier Seating, 48" Wide, Straight, Fully Upholstered
E	2	CL1HVU	Clamber One-Tier Seating, 54" Wide, Half-Oval, Fully Upholstered
F	1	CL1VNU	Clamber One-Tier Seating, 45 Degree, Inside Curve, Fully Upholstered
G	3	MGBPSPAD	Imaginasium Square Blips
	6	CLAGKSG	Clamber Tiered Seating Ganging Kit (optional)**

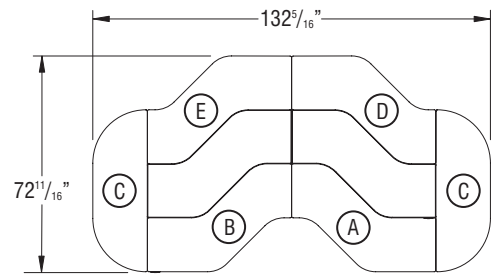
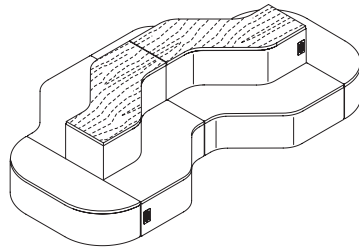


**Tiered seating ganging kits (CLAGKSG) are available separately for connecting units together.

Typical
Configurations
(cont.)

Typical Configuration 5

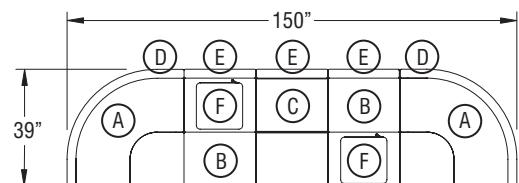
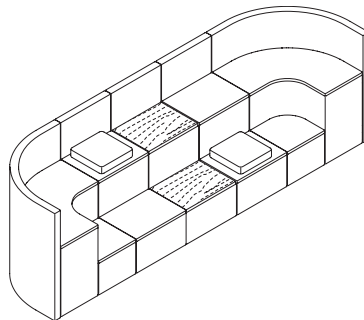
Item	Qty	Model	
A	1	CL2SLUL	Clamber Two-Tier Seating, 48" Wide, S-Curve Left, Laminate Top on Upper Tier
B	1	CL2SRUL	Clamber Two-Tier Seating, 48" Wide, S-Curve Right, Laminate Top on Upper Tier
C	2	CL1HVU	Clamber One-Tier Seating, 54" Wide, Half-Oval, Fully Upholstered
D	1	CL1SLU	Clamber One-Tier Seating, 48" Wide, S-Curve Left, Fully Upholstered
E	1	CL1SRU	Clamber One-Tier Seating, 48" Wide, S-Curve Right, Fully Upholstered
	4	CLAGKSG	Clamber Tiered Seating Ganging Kit (optional)**



**Tiered seating ganging kits (CLAGKSG) are available separately for connecting units together.

Typical Configuration 6

Item	Qty	Model	
A	2	CL2CNUU	Clamber Two-Tier Seating, Inside Corner, Fully Upholstered
B	2	CL2R2UU	Clamber Two-Tier Seating, 24" Wide, Straight, Fully Upholstered
C	1	CL2R2LL	Clamber Two-Tier Seating, 24" Wide, Straight, Laminate Tops on Both Tiers
D	2	CLWCNN	Clamber Wall, Inside Corner, Fully Upholstered
E	3	CLWR2N	Clamber Wall, 24" Wide, Straight, Fully Upholstered
F	2	MGBPSPAD	Imaginasium Square Blips
	4	CLAGKSG	Clamber Tiered Seating Ganging Kit (optional)**

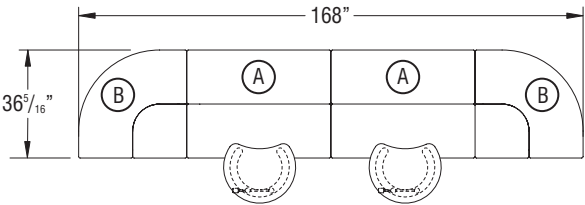
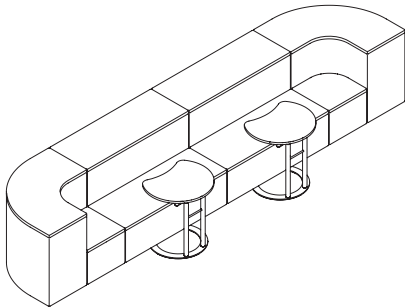


**Tiered seating ganging kits (CLAGKSG) are available separately for connecting units together.

Typical
Configurations
(cont.)

Typical Configuration 7

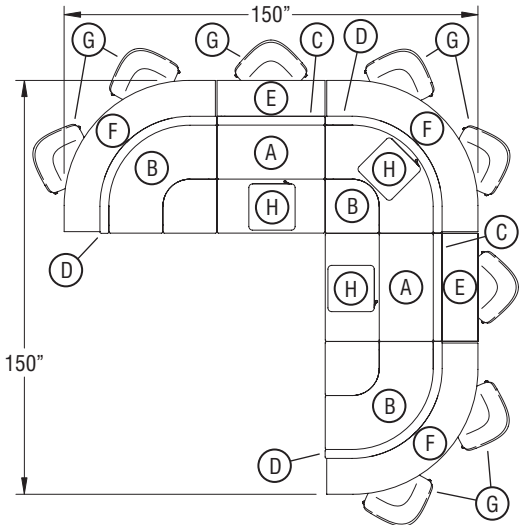
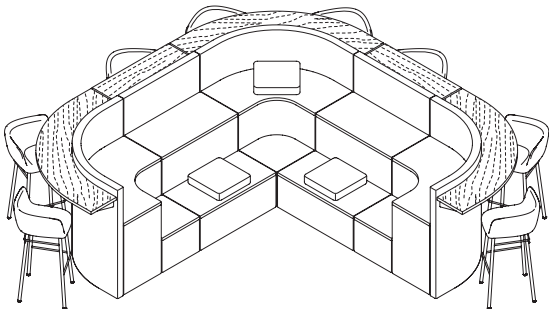
Item	Qty	Model	
A	2	CL2R4UU	Clamber Two-Tier Seating, 48" Wide, Straight, Fully Upholstered
B	2	CL2CNUU	Clamber Two-Tier Seating, Inside Corner, Fully Upholstered
C	2	CMDEP24	C-Table Max Adjustable-Height - Round with Curve Top
	3	CLAGKSG	Clamber Tiered Seating Ganging Kit (optional)**



**Tiered seating ganging kits (CLAGKSG) are available separately for connecting units together.

Typical Configuration 8

Item	Qty	Model	
A	2	CL2R3UU	Clamber Two-Tier Seating, 36" Wide, Straight, Fully Upholstered
B	3	CL2CNUU	Clamber Two-Tier Seating, Inside Corner, Fully Upholstered
C	2	CLSR3N	Clamber Wall, 36" Wide, Straight, Fully Upholstered with Worksurface Mount*
D	3	CLSCNN	Clamber Wall, Inside Corner, Fully Upholstered with Worksurface Mount
E	2	CLAWSRT36-74P	Clamber Wall, 36" Wide, Straight, Laminate Worksurface
F	3	CLAWSCN-74P	Clamber Wall, Inside Corner, Laminate Worksurface
G	8	CA470030	Calida Four-Leg Stools, 30" High
H	3	MGBPSPAD	Imaginasium Square Blips
	2	CLAGKSG	Clamber Tiered Seating Ganging Kit (optional)**
	4	CLAGKWG	Clamber Wall, Worksurface Ganging Kit (optional)**



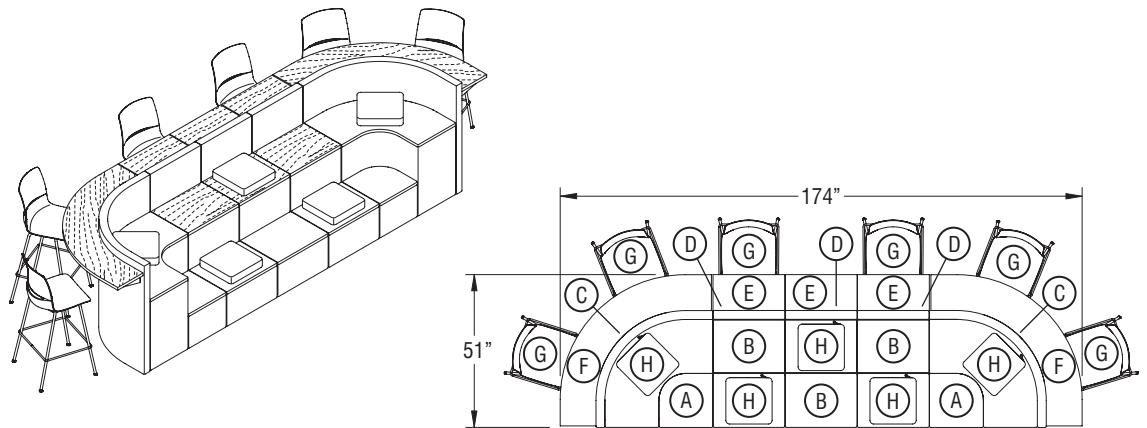
*Each Clamber wall (CLSR3N) includes a tiered seating ganging kit (CLAGKSG). Any, two-tiered seating, straight - 36" wide (CL2R3) and wall with worksurface - straight - 36" wide (CLSR3) must be ganged to another two-tiered seating unit, side-by-side.

**Ganging kits (CLAGKSG & CLAGKWG) are available separately for connecting units together.

Typical
Configurations
(cont.)

Typical Configuration 9

Item	Qty	Model	
A	2	CL2CNUU	Clamber Two-Tier Seating, Inside Corner, Fully Upholstered
B	3	CL2R2UL	Clamber Two-Tier Seating, 24" Wide, Straight, Laminate Top on Upper Tier
C	2	CLSCNN	Clamber Wall, Inside Corner, Fully Upholstered with Worksurface Mount
D	3	CLSR2N	Clamber Wall, 24" Wide, Straight, Fully Upholstered with Worksurface Mount*
E	3	CLAWSRT24-74P	Clamber Wall, 24" Wide, Straight, Laminate Worksurface
F	2	CLAWSCN-74P	Clamber Wall, Inside Corner, Laminate Worksurface
G	6	LL4100H30	Limelite Four-Leg Armless Cafe Stool, 30" High
H	5	MGBPSPAD	Imaginasium Square Blips
	1	CLAGKSG	Clamber Tiered Seating Ganging Kit (optional)**
	4	CLAGKWG	Clamber Wall, Worksurface Ganging Kit (optional)**

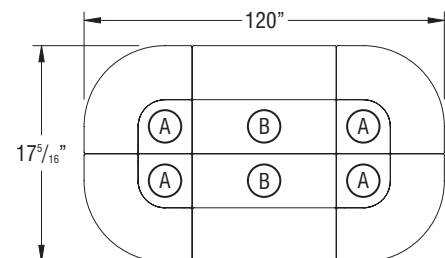
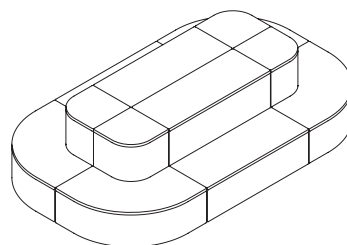


*Each Clamber wall (CLSR2N) includes a tiered seating ganging kit (CLAGKSG). Any, two-tiered seating, straight - 24" wide (CL2R2) and wall with worksurface - straight - 24" wide (CLSR2) must be ganged to another two-tiered seating unit, side-by-side.

**Ganging kits (CLAGKSG & CLAGKWG) are available separately for connecting units together.

Typical Configuration 10

Item	Qty	Model	
A	4	CL2CTUU	Clamber Two-Tier Seating, Outside Corner, Fully Upholstered
B	2	CL2R3UU	Clamber Two-Tier Seating, 36" Wide, Straight, Fully Upholstered
	4	CLAGKSG	Clamber Tiered Seating Ganging Kit (optional)**

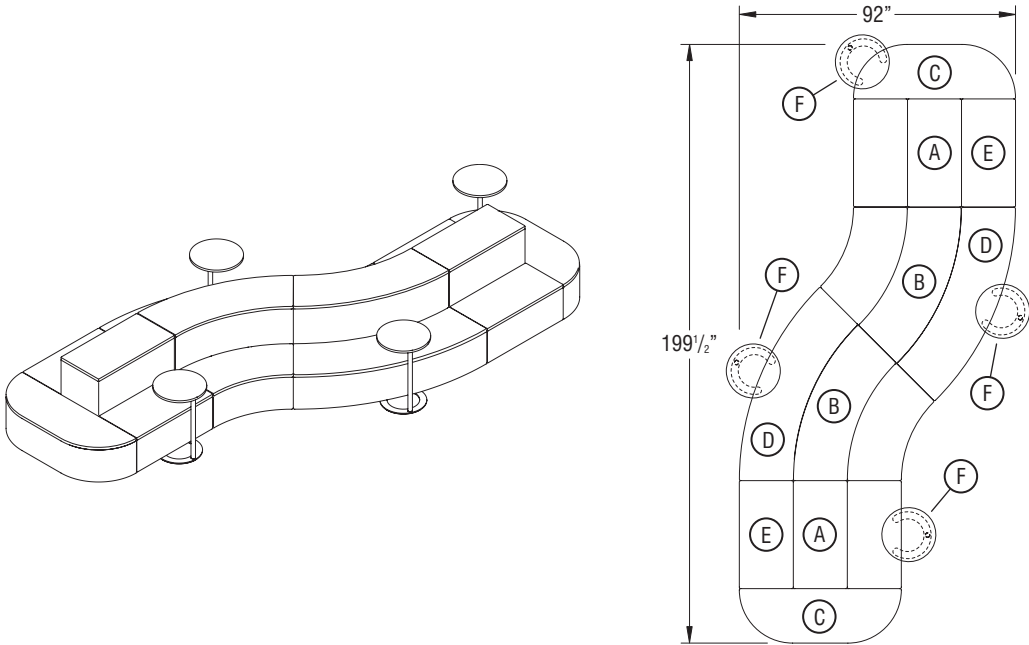


**Tiered seating ganging kits (CLAGKSG) are available separately for connecting units together.

Typical
Configurations
(cont.)

Typical Configuration 11

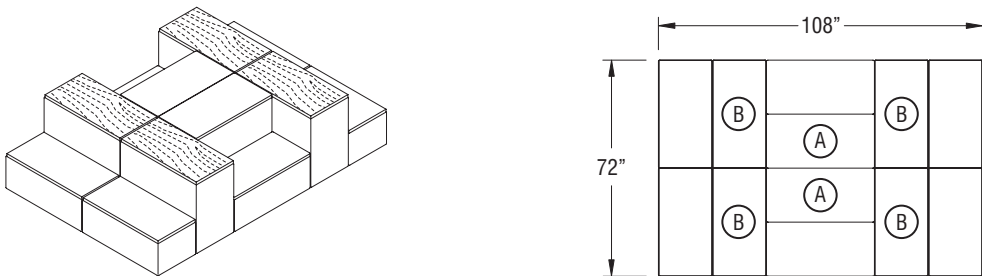
Item	Qty	Model	
A	2	CL2R3UU	Clamber Two-Tier Seating, 36" Wide, Straight, Fully Upholstered
B	2	CL2VNUU	Clamber Two-Tier Seating, 45 Degree, Inside Curve, Fully Upholstered
C	2	CL1HVV	Clamber One-Tier Seating, 54" Wide, Half-Oval, Fully Upholstered
D	2	CL1VNU	Clamber One-Tier Seating, 45 Degree, Inside Curve, Fully Upholstered
E	2	CL1R3U	Clamber One-Tier Seating, 36" Wide, Straight, Fully Upholstered
F	4	CTABLE	C-Table, Personal Workspace
	8	CLAGKSG	Clamber Tiered Seating Ganging Kit (optional)**



**Tiered seating ganging kits (CLAGKSG) are available separately for connecting units together.

Typical Configuration 12

Item	Qty	Model	
A	2	CL2R3UU	Clamber Two-Tier Seating, 36" Wide, Straight, Fully Upholstered
B	4	CL2R3UL	Clamber Two-Tier Seating, 36" Wide, Straight, Laminate Top on Upper Tier
	4	CLAGKSG	Clamber Tiered Seating Ganging Kit (optional)**

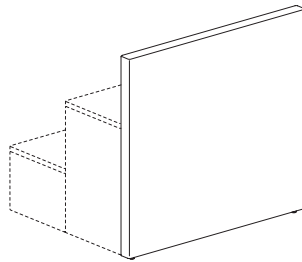


**Tiered seating ganging kits (CLAGKSG) are available separately for connecting units together.

Clamber Wall Guidelines

Planning Guidelines

- Must be field installed on correlating Clamber two-tiered seating.
- Correlating Clamber two-tiered seating must be ordered separately.
- Two-tiered seating units will ship without pre-cut holes required to accept a wall unit. Installer must cut the holes. Wall units will ship with the pre-cut holes required to accept correlating two-tiered units. See Clamber Tiered Seating - Assembly Instructions (KI-AI-000203) for more information.
- Wall units come with necessary mounting hardware.
- Basic tools are required for assembly.
- Side-to-side ganging of another two-tiered seating unit is optional but recommended. Tiered seating ganging kits are ordered separately (CLAGKSG).
- Due to variations in foam and upholstery in the manufacturing process, all units have a dimensional tolerance of up to $\pm 1/4$ " (width & depth) when fitting together, or into spaces. The tolerance is compounded as more units are added into a configuration. For example: Two 48" units side-to-side should factor in a possible overall width of $96\frac{1}{2}$ " ($\pm 1/4$ " per unit).

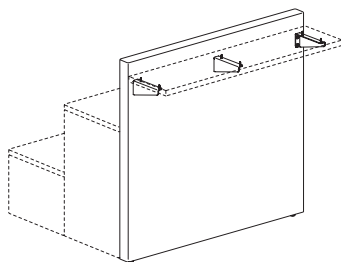


(CLWR4N shown)

Clamber Wall with Worksurface Mount Guidelines

Planning Guidelines

- Includes wall & mounting hardware.
- Basic tools are required for assembly.
- Mounting hardware is field installed.
- Worksurface must be ordered separately and field installed.
- Wall must be installed on correlating two-tiered seating, which must be ordered separately.
- Two-tiered seating units will ship without pre-cut holes required to accept a wall unit. Installer must cut the holes. Wall units will ship with pre-cut holes required to accept worksurface mounts and correlating two-tiered units. See Clamber Tiered Seating - Assembly Instructions (KI-AI-000203) for more information.
- Side-to-side ganging of another two-tiered seating unit is generally optional, and kits are ordered separately (CLAGKSG). Three cases exist where tiered seating ganging is required to ensure stability (see page 34). When required, ganging kits are included with the wall with worksurface mount unit.
- Worksurface ganging is recommended, and ordered separately to join together and level worksurfaces that are planned side-by-side.
- Worksurfaces are installed at a height of 42" to be paired with stools that have a seat height of 30".
- Installed worksurfaces will have a nominal gap between them when centered on the wall unit. This gap could be up to $1/2$ " between worksurfaces. If the customer desires to minimize or close the gap between worksurfaces, this is covered in the assembly instructions.
- Due to variations in foam and upholstery in the manufacturing process, all units have a dimensional tolerance of up to $\pm 1/4$ " (width & depth) when fitting together, or into spaces. The tolerance is compounded as more units are added into a configuration. For example: Two 48" units side-to-side should factor in a possible overall width of $96\frac{1}{2}$ " ($\pm 1/4$ " per unit).

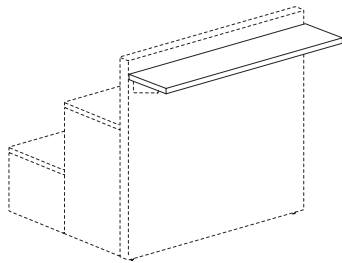


(CLSR4N shown)

**Clamber Wall
Laminate
Worksurface
Guidelines**

Planning Guidelines

- Includes worksurface **ONLY**.
- Mounting hardware is included with correlating wall with worksurface mount which must be ordered separately and is field installed.
- Basic tools are required for assembly.
- Worksurface ganging is recommended and ordered separately to join together and level worksurfaces that are planned side-by-side.



(CLAWSRT48-74P shown)

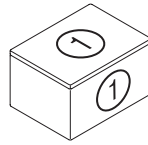
Specifying Top & Base Material

Planning Guidelines

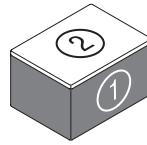
- Clamber units may be specified to have non-contrast upholstery (entire unit – same covering), or with upholstery contrast (different covering on tier top(s)).

Clamber One-Tier Seating can be specified as:

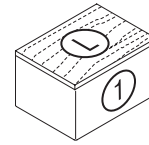
- Upholstered Top, Non-contrast** - One upholstery selection for the entire unit.
- Upholstered Top, Contrast** - Two upholstery selections: Selection one for the base of the unit, and selection two for the top.
- Laminate Top** - Laminate top selection with 74P edge selection for the top. One upholstery selection on the base of the unit.



Upholstered Top, Non-Contrast
(one-tier seating,
24" wide - straight shown)



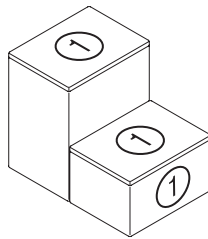
Upholstered Top, Contrast
(one-tier seating,
24" wide - straight shown)



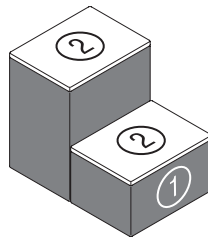
Laminate Top
(one-tier seating,
24" wide - straight shown)

Clamber Two-Tiered Seating can be specified as:

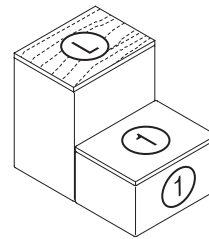
- Upholstered Top on Both Tiers, Non-contrast** – One upholstery selection for the entire unit.
- Upholstered Top on Both Tiers, Contrast** – Two upholstery selections: Selection one for the base of the unit and selection two for both tier tops.
- Laminate Top on Upper Tier, Upholstery Non-contrast** – Laminate top selection with 74P edge selection for the upper-tier top. One upholstery selection for both the base of the unit and the lower-tier top.
- Laminate Top on Upper Tier, Upholstery Contrast** – Laminate top selection with 74P edge selection for the upper-tier top. Two upholstery selections: Selection one for the base of the unit and selection two for the lower-tier top.
- Laminate Top on Lower Tier, Upholstery Non-contrast** – Laminate top selection with 74P edge selection for the lower-tier top. One upholstery selection for both the base of the unit and the upper-tier top.
- Laminate Top on Lower Tier, Upholstery Contrast** – Laminate top selection with 74P edge selection for the lower-tier top. Two upholstery selections: Selection one for the base of the unit and selection two for the upper-tier top.
- Laminate Top on Both Tiers, Upholstery Non-contrast** – Laminate top selection with 74P edge selection for both tier tops. One upholstery selection for the base of the unit.



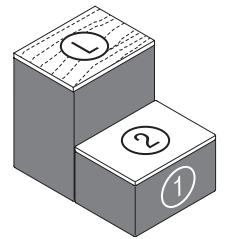
Upholstered Top on both Tiers, Non-Contrast
(two-tier seating,
24" wide - straight shown)



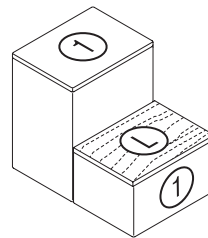
Upholstered Top on both Tiers, Contrast
(two-tier seating,
24" wide - straight shown)



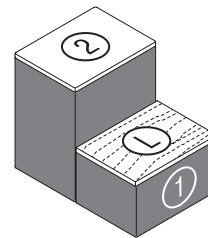
Laminate Top on Upper Tier, Upholstered Top on Lower Tier, Non-Contrast
(two-tier seating,
24" wide - straight shown)



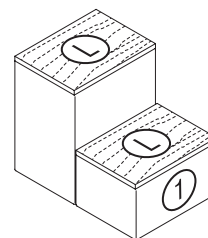
Laminate Top on Upper Tier, Upholstered Top on Lower Tier, Non-Contrast
(two-tier seating,
24" wide - straight shown)



Upholstered Top on Upper Tier, Laminate Top on Lower Tier, Non-Contrast
(two-tier seating,
24" wide - straight shown)



Upholstered Top on Upper Tier, Laminate Top on Lower Tier, Contrast
(two-tier seating,
24" wide - straight shown)

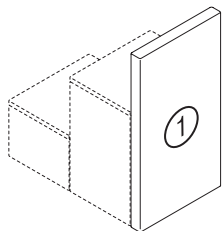


Laminate Top on both Tiers, Non-Contrast
(two-tier seating,
24" wide - straight shown)

**Specifying Top &
Base Material
(cont.)**

Wall units can be specified as:

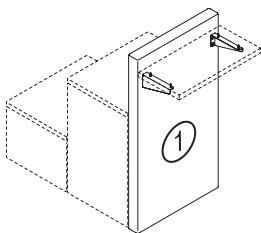
- **Upholstered, Non-contrast** – One upholstery selection for the wall.



**Upholstered,
Non-Contrast**
(wall, 24" wide -
straight shown)

Wall with Worksurface Mount (for laminate worksurface) units can be specified as:

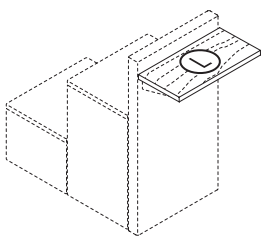
- **Upholstered, Non-contrast, with Worksurface Mount** – One upholstery selection for the wall. Includes worksurface brackets which are Warm Grey only.



**Upholstered,
Non-Contrast**
(wall with worksurface mount,
24" wide - straight
shown)

Laminate Worksurface for Wall with Worksurface Mount units can be specified as:

- **Laminate Worksurface** – Laminate worksurface selection with 74P edge selection.



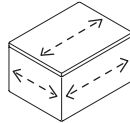
**(laminate worksurface
24" wide - straight
shown)**

Upholstery Orientation

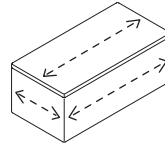
Planning Guidelines

- Fully upholstered Clamber units are available to accommodate patterned material on seats and sides. Arrows indicate upholstery direction.

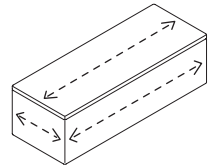
One-Tier Seating



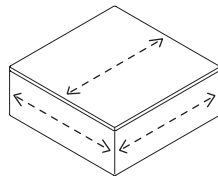
Straight - 24" Wide
CL1R2



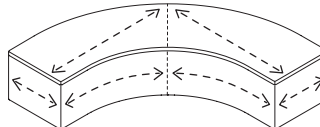
Straight - 36" Wide
CL1R3



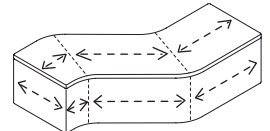
Straight - 48" Wide
CL1R4



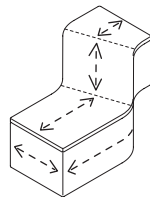
Straight - 36" Wide
CL1SQ



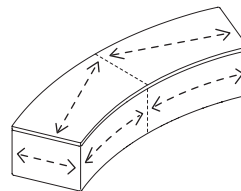
Inside Corner
CL1CN



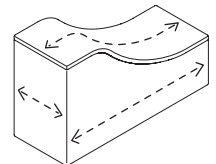
S-Curve - Left
CL1SL



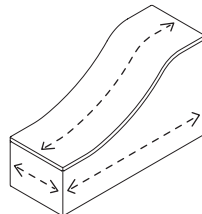
S-Curve - Right
CL1SR



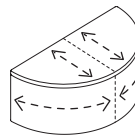
Inside Curve - 45 Degree
CL1VN



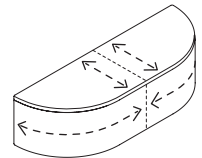
Wave - Left
CL1WL



Wave - Right
CL1WR



Half-Round - 36" Wide
CL1HR



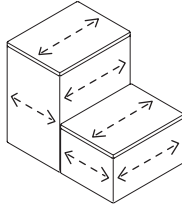
Half-Round - 54" Wide
CL1HV

**Upholstery
Orientation
(cont.)**

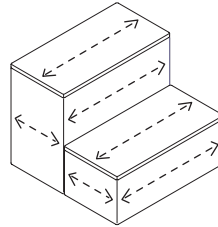
Planning Guidelines

- Fully upholstered Clamber units are available to accommodate patterned material on seats and sides. Arrows indicate upholstery direction.

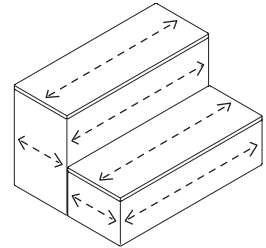
Two-Tier Seating



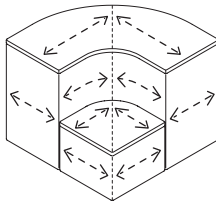
Straight - 24" Wide
CL2R2



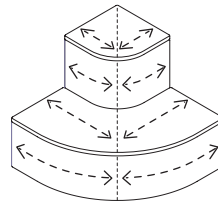
Straight - 36" Wide
CL2R3



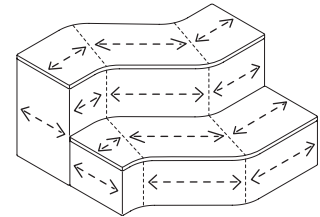
Straight - 48" Wide
CL2R4



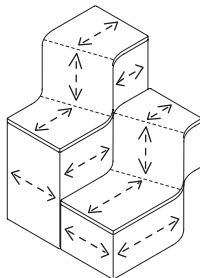
Inside Corner*
CL2CN



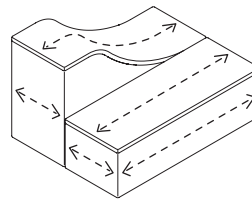
Outside Corner
CL2CT



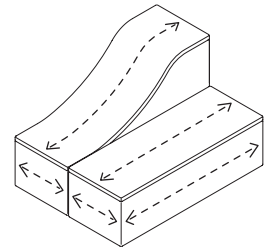
S-Curve - Left
CL2SL



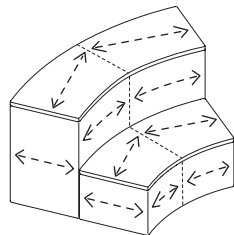
S-Curve - Right
CL2SR



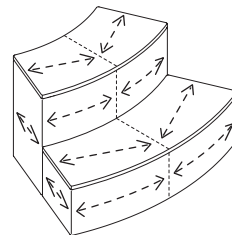
Wave - Left
CL2WL



Wave - Right
CL2WR



Inside Curve - 45 Degree
CL2VN



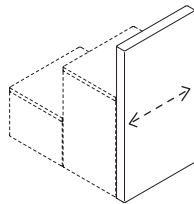
Outside Curve - 45 Degree
CL2VT

**Upholstery
Orientation
(cont.)**

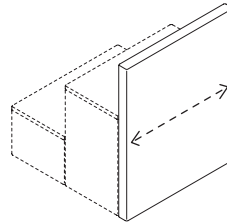
Planning Guidelines

- Fully upholstered Clamber wall units are available to accommodate patterned material. Arrows indicate upholstery direction.

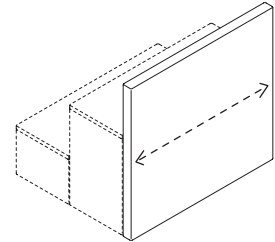
Walls



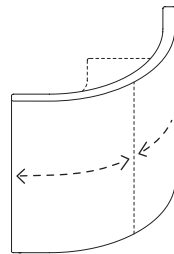
Straight - 24" Wide
CLWR2N



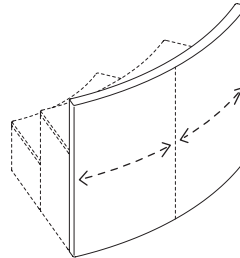
Straight - 36" Wide
CLWR3N



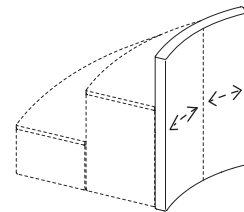
Straight - 48" Wide
CLWR4N



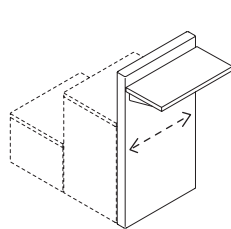
Inside Corner
CLWCNN



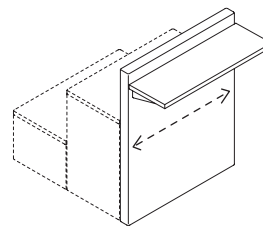
Inside Curve - 45 Degree
CLWVNN



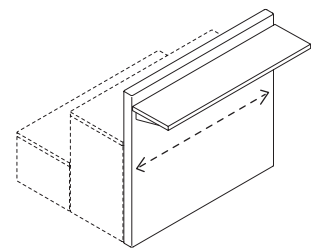
Outside Curve - 45 Degree
CLWVTN



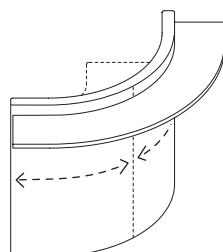
Straight - 24" Wide
CLSR2N



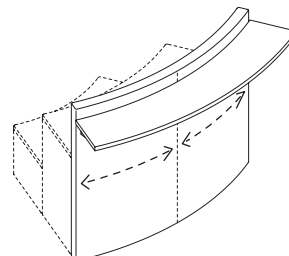
Straight - 36" Wide
CLSR3N



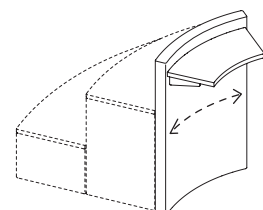
Straight - 48" Wide
CLSR4N



Inside Corner
CLSCNN



Inside Curve - 45 Degree
CLSVNN



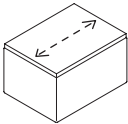
Outside Curve - 45 Degree
CLSVTN

Laminate
Orientation

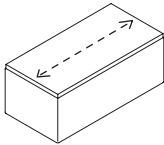
Planning Guidelines

- Laminate tops on Clamber units have specific material direction. Arrows indicate laminate orientation on the tops.

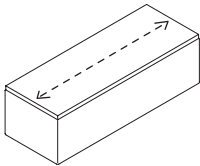
One-Tier Seating



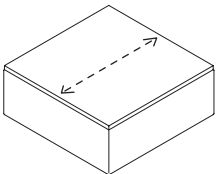
Straight - 24" Wide
CL1R2



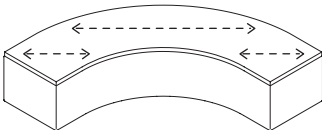
Straight - 36" Wide
CL1R3



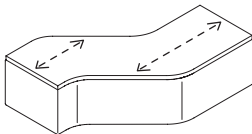
Straight - 48" Wide
CL1R4



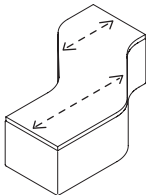
Square - 36" Wide
CL1SQ



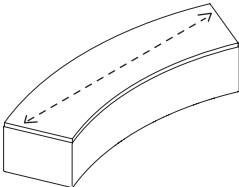
Inside Corner
CL1CN



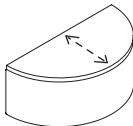
S-Curve - Left
CL1SL



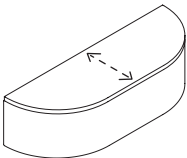
S-Curve - Right
CL1SR



Inside Curve - 45 Degree
CL1VN



Half-Round - 36" Wide
CL1HR



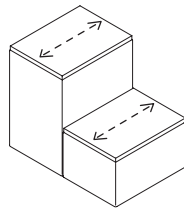
Half Oval - 54" Wide
CL1HV

**Laminate
Orientation
(cont.)**

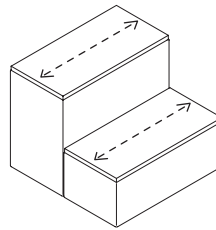
Planning Guidelines

- Laminate tops on Clamber units have specific material direction. Arrows indicate laminate orientation on the tops.

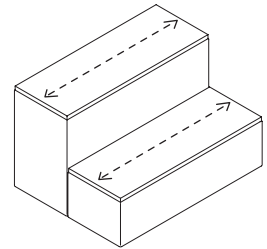
Two-Tier Seating



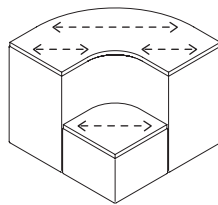
Straight - 24" Wide
CL2R2



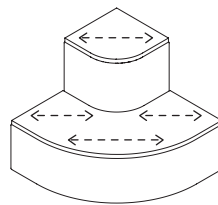
Straight - 36" Wide
CL3R2



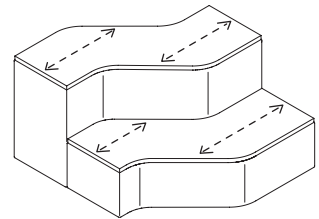
Straight - 48" Wide
CL2R4



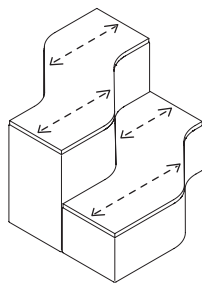
Inside Corner*
CL2CN



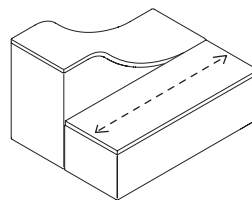
Outside Corner*
CL2CT



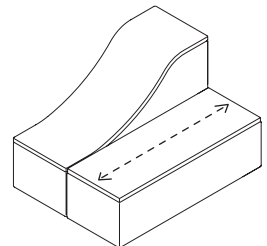
S-Curve - Left
CL2SL



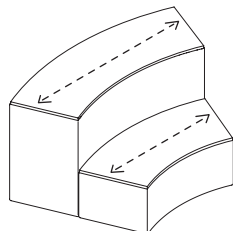
S-Curve - Right
CL2SR



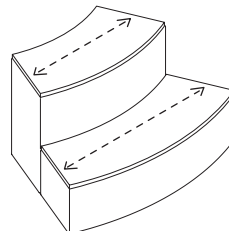
Wave - Left
CL2WL



Wave - Right
CL2WR



Inside Curve - 45 Degree
CL2VN



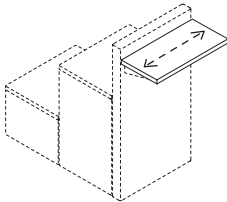
Outside Curve - 45 Degree
CL2VT

Laminate
Orientation
(cont.)

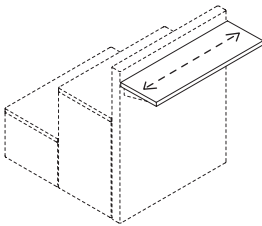
Planning Guidelines

- Laminate worksurfaces on Clamber units have specific material direction. Arrows indicate laminate orientation on the worksurfaces.

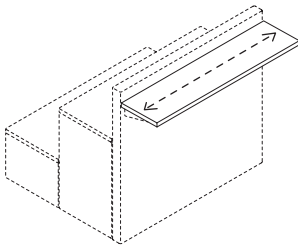
Laminate Worksurfaces



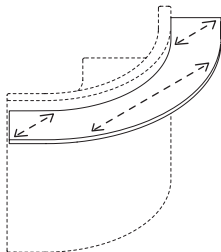
Straight - 24" Wide
CLAWSRT24-74P



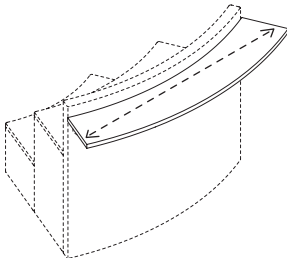
Straight - 36" Wide
CLAWSRT36-74P



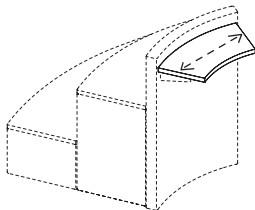
Straight - 48" Wide
CLAWSRT48-74P



Inside Corner
CLAWSCN-74P



Inside Curve - 45 Degree
CLAWSVN-74P



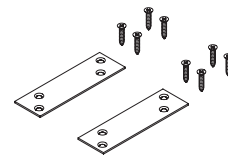
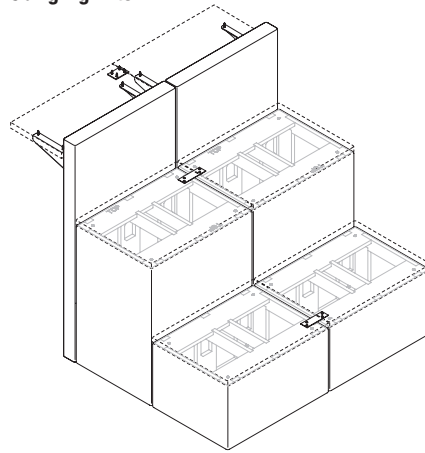
Outside Curve - 45 Degree
CLAWSVT-74P

Ganging Guidelines

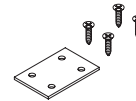
Planning Guidelines

- Each tiered seating ganging kit (ordered separately) includes two ganging plates and eight wood screws. Each ganging plate is installed at recommended locations to the upper wood frame of two units to be joined. Ganging plates are black in color and are concealed under installed tier tops. Ganging plate locations are flexible, and up to the customer/installer within guidelines, and are for the most part optional, but use is recommended. In some cases, ganging plate installation is required, and kit(s) will be provided with those units.
- Worksurface ganging kits include one ganging plate and four wood screws for each pair of worksurfaces to be joined underneath. No pre-drilled mounting holes exist, so mounting locations are up to customer/installer discretion. Ganging plates are black in color.

Ganging Kits



Tiered Seating Ganging Kit (CLAGKSG)

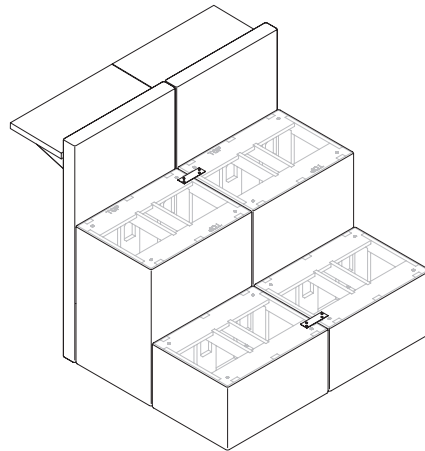


Worksurface Ganging Kit (CLAGKWG)

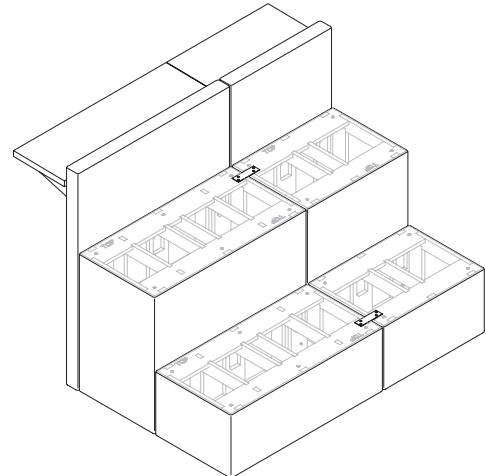
Ganging Guidelines (cont.)

Ganging Requirements

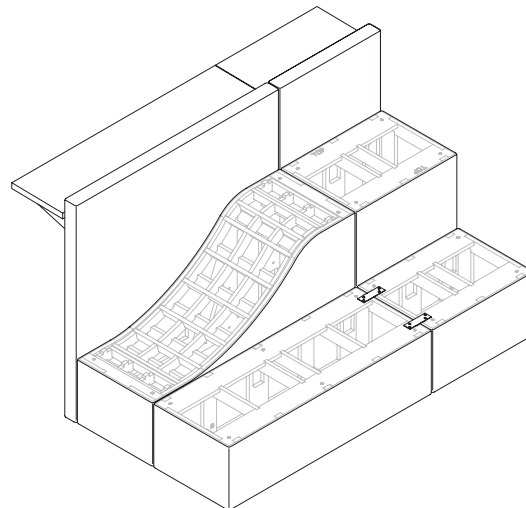
- Tiered seating ganging is generally optional and the ganging kit (CLAGKSG) may be ordered separately. The following guidelines are for when side-by-side tiered seating ganging is required to ensure stability:
 - When assembled, a two-tiered seating straight - 24" wide (CL2R2) and wall with worksurface mount (CLSR2) must be ganged together to another two-tiered seating unit, side by side, to ensure stability. Each wall with worksurface mount - straight - 24" wide includes required ganging kit.
 - When assembled, a two-tiered straight - 36" wide (CL2R3) and wall with worksurface mount (CLSR3) must be ganged together to another two-tiered seating unit, side by side, to ensure stability. Each wall with worksurface mount - straight - 36" wide includes required ganging kit.
 - When assembled, a two-tiered wave - left or - right (CL2WL or CL2WR) and wall with worksurface mount (CLSR4) must be ganged together to another two-tiered seating unit, side by side, to ensure stability. Each wall with worksurface mount - straight - 48" wide includes required ganging kit.
 - When a two tiered, 48" wide straight unit has a wall with worksurface attached, there is no ganging requirement. Ganging is only a requirement on a two-tier wave (left or right) unit if a wall with worksurface is installed.
- With the exception of the three units listed above that require ganging, all other units may be freestanding, but ganging is recommended.



**Two-Tiered Straight - 24" Wide with
Wall with Worksurface Mount - Straight - 24" Wide**



**Two-Tiered Straight - 36" Wide with
Wall with Worksurface Mount - Straight - 36" Wide**



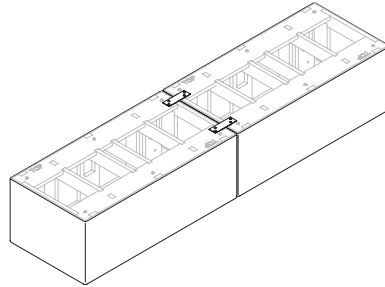
**Two-Tiered Wave - Left or Right with
Wall with Worksurface Mount - Straight - 48" Wide**

**Ganging
Guidelines
(cont.)**

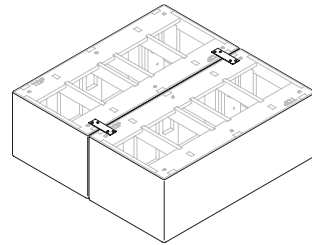
Ganging Location Recommendations

- Install two ganging plates to the upper wood frame of two units to be joined together. No pre-drilled mounting holes exist, so mounting locations are up to customer/installer discretion.

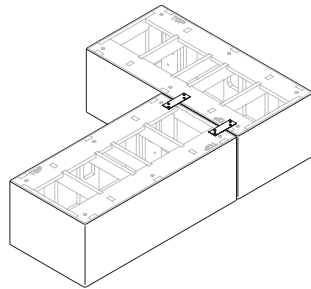
**One-Tier Seating Side-to-Side
Ganging Recommendations**



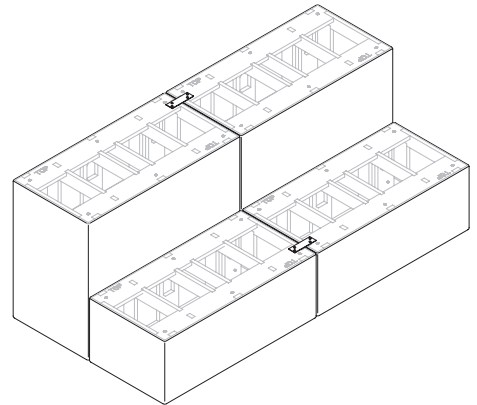
**One-Tier Seating Side-to-Side
Ganging Recommendations**



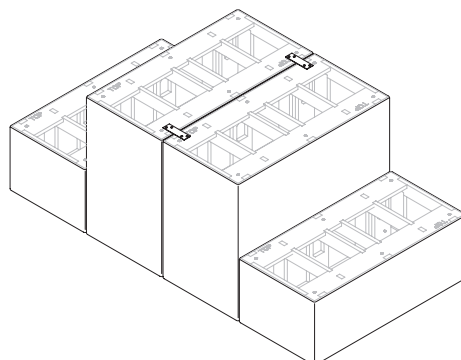
**One-Tier Seating Back-to-Side
Ganging Recommendations**



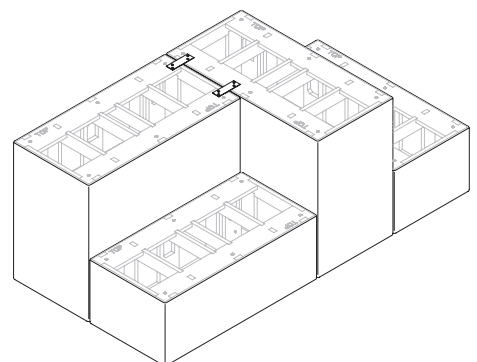
**Two-Tiered Seating Side-to-Side
Ganging Recommendations**



**Two-Tiered Seating Back-to-Back
Ganging Recommendations**



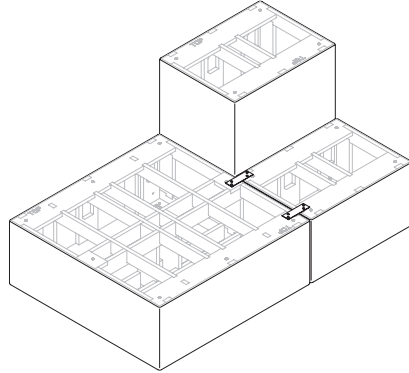
**Two-Tiered Seating Side-to-Back
Ganging Recommendations**



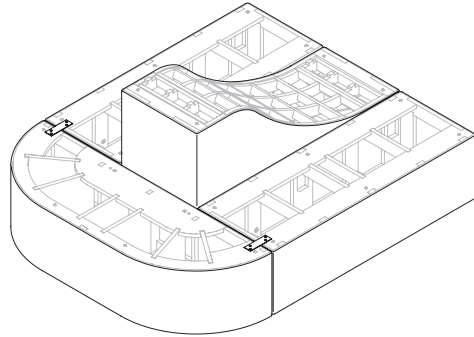
Ganging Guidelines (cont.)

Ganging Location Recommendations (cont.)

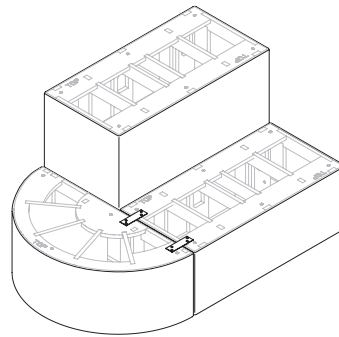
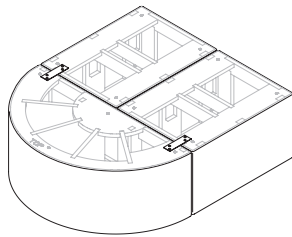
One-Tier Seating Side-to-Side of Two-Tiered Ganging Recommendations



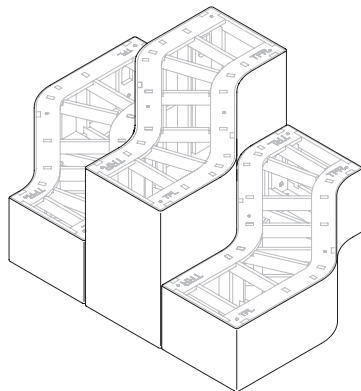
One-Tier Half-Oval Ganging Recommendations



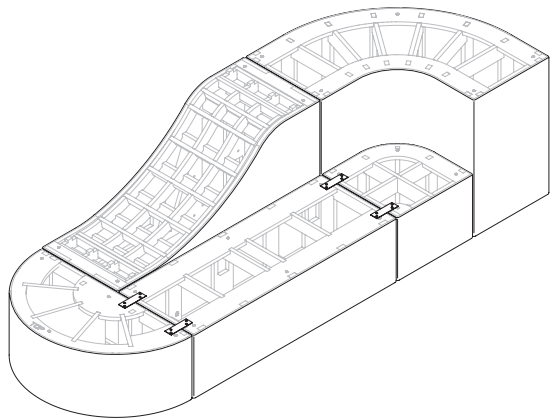
One-Tier Half-Round Ganging Recommendations



One-Tier S-Curve to the Back of Two-Tiered S-Curve Ganging Recommendations:
CANNOT BE GANGED. They will be free floating from the two-tier units at their backs. A Product Modification Request (PMR) is required to permanently mount a one tier unit to the back of a two-tier unit.



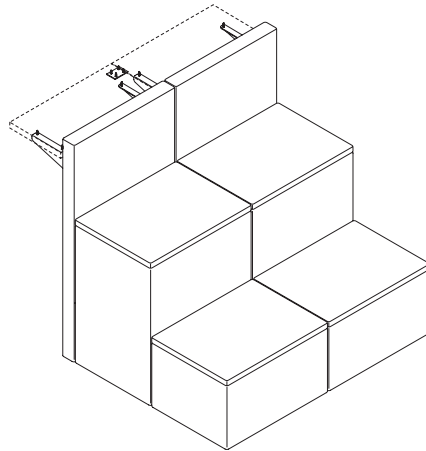
Two-Tiered Wave Seating Ganging Recommendations:
Wave unit top does not pop off to allow for ganging.



**Ganging
Guidelines
(cont.)**

Clamber Wall with Worksurface Ganging

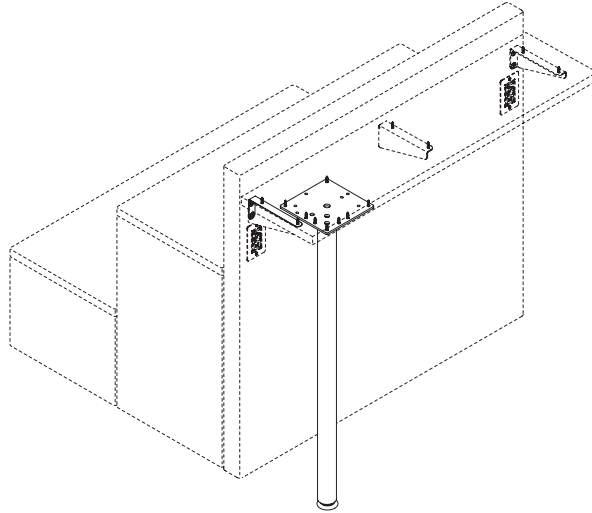
- Worksurface-to-worksurface ganging is recommended to hold side-by-side planned worksurfaces together and keep them level to each other.
- Worksurface ganging kits (CLAGKWG) are ordered separately.
- Worksurface ganging kits include one ganging plate and four wood screws for each pair of worksurfaces to be joined underneath near the front of the worksurfaces. No pre-drilled holes exist, so mounting location is up to customer/installer discretion. Ganging plates are black in color.



Worksurface Leg Kit

Planning Guidelines

- Wall worksurface leg kits are available and ordered separately as desired. Leg kits can be specified to better accommodate the visually impaired, or based on customer preference. Each kit contains one post leg, one L-bracket and connection hardware. The L-bracket is an optional replacement for the standard cantilever bracket to maintain a clean aesthetic. L-bracket is available in Warm Grey only. See Product Color Options in the Clamber Tiered Seating pricelist for post leg color options.

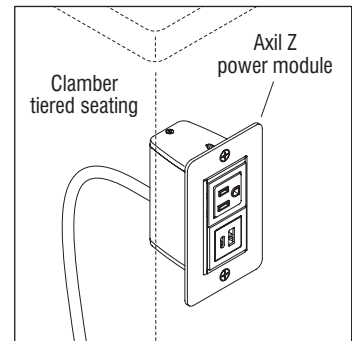
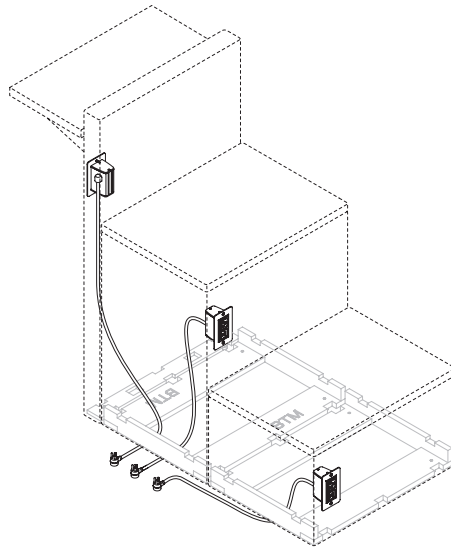


ELECTRICAL

Power Modules

Planning Guidelines

- Optional power includes the Axil Z power module with 3-prong plug. The power module houses one AC simplex receptacle (rated at 15 amps/125 volts), one USB-A port and one USB-C port (rated at 2.1 amps/5 volts).
- Module colors available are Warm Grey, Cool Grey, White and Black, in matte finishes.
- Cords are 120" (10 ft) long and only in black.

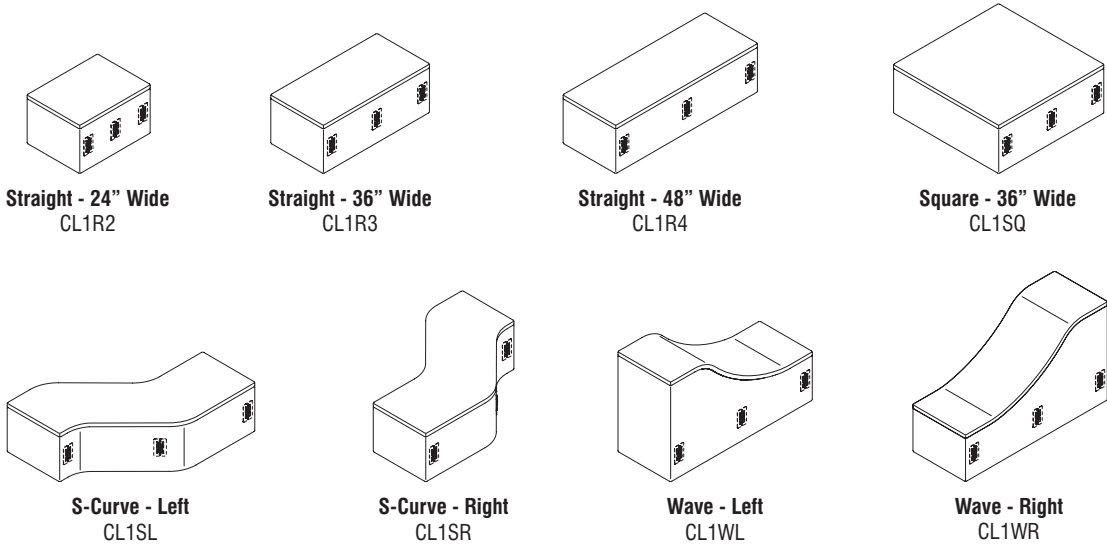


Axil Z Power Module

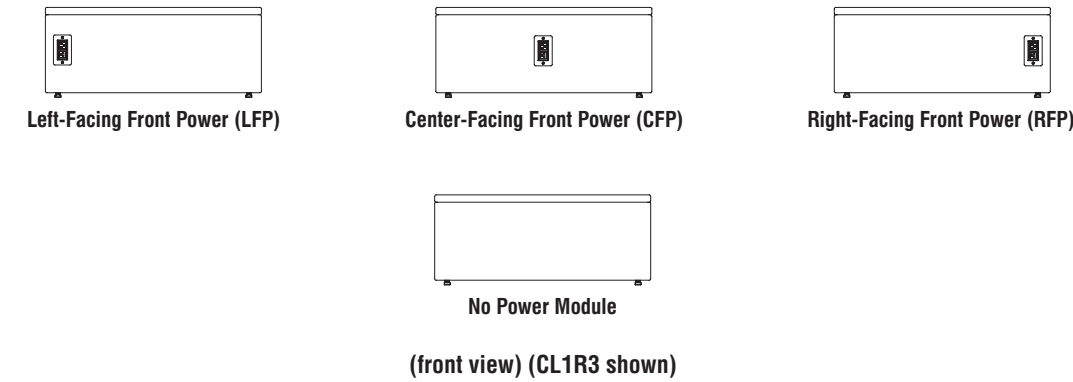
Power Module Locations

Planning Guidelines

One-Tier Seating - (straight, square, s-curve & wave)
One-tier seating straight - 24" wide (CL1R2), straight - 36" wide (CL1R3), straight - 48" wide (CL1R4), square - 36" wide (CL1SQ), S-curve - left (CL1SL), S-curve - right (CL1SR), Wave - left (CL1WL), and Wave - right (CL1WR) units can accommodate one Axil Z power module at one of three locations when specified: left- (LFP), center- (CFP), and right-facing (RFP).



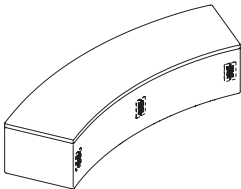
CL1R2, CL1R3, CL1R4, CL1SQ, CL1SL, CL1SR, CL1WL & CL1WR Power Module Locations



**Power Module
Locations (cont.)**

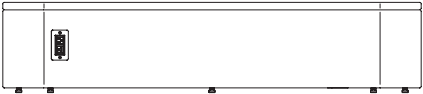
One-Tier Seating - (inside curve - 45 degree)

Inside Curve - 45 degree (CL1VN) units can accommodate one Axil Z power module at one of six locations when specified: outside curve left- (OLFP), outside curve center- (OCP), outside curve right- (RFP), inside curve left- (ILFP), inside curve center (ICFP), and inside curve right-facing (IRFP).

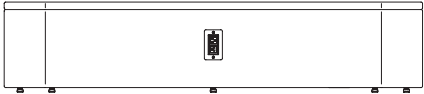


**Inside Curve - 45 Degree
CL1VN**

CL1VN Power Module Locations



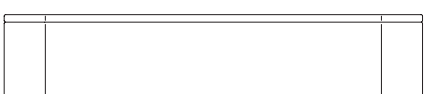
Inside Curve Left-Facing Power (ILFP)



Inside Curve Center-Facing Power (ICFP)



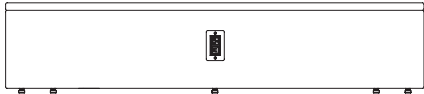
Inside Curve Right-Facing Power (IRFP)



No Power Module



Outside Curve Left-Facing Power (OLFP)



Outside Curve Center-Facing Power (OCP)

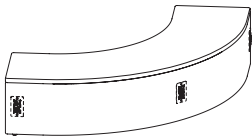


Outside Curve Right-Facing Power (ORFP)

(front view) (CL1VN shown)

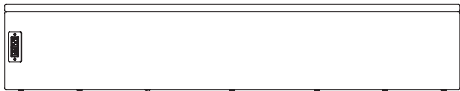
Power Module
Locations (cont.)

One-Tier Seating - (inside corner)
Inside corner (CL1CN) units can accommodate one Axil Z power module at one of three locations when specified: outside curve left- (OLFP), outside curve center- (OCP), and outside curve right-facing (RFP).

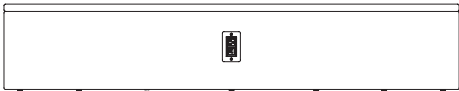


Inside Corner
CL1CN

CL1CN Power Module Locations



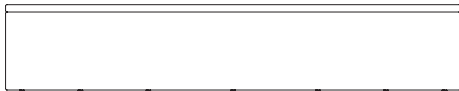
Outside Curve Left-Facing Power (OLFP)



Outside Curve Center-Facing Power (OCP)



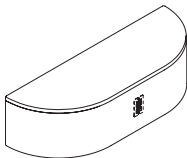
Outside Curve Right-Facing Power (ORFP)



No Power Module

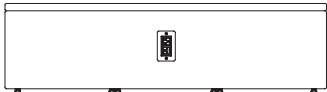
(front view) (CL1CN shown)

One-Tier Seating - (half-oval)
Half-oval (CL1HV) units can accommodate one center-facing (CFP) Mini-Tap power module when specified.

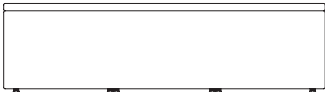


Half Oval - 54" Wide
CL1HVU

CL1HV Power Module Locations



Center-Facing Power (CFP)



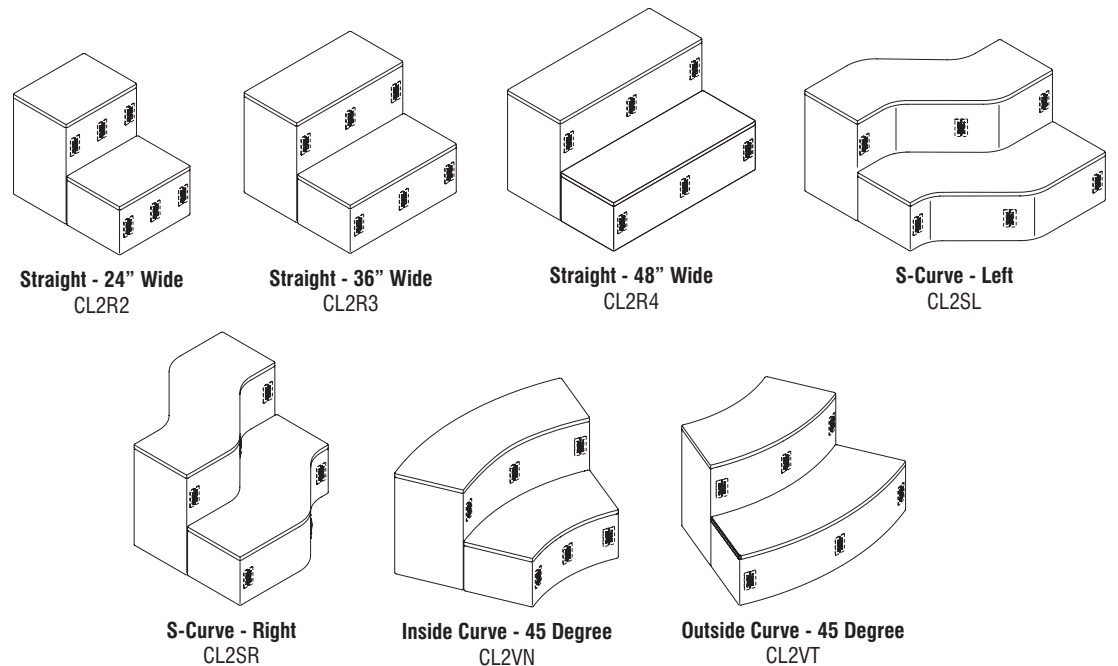
No Power Module

(front view) (CL1HV shown)

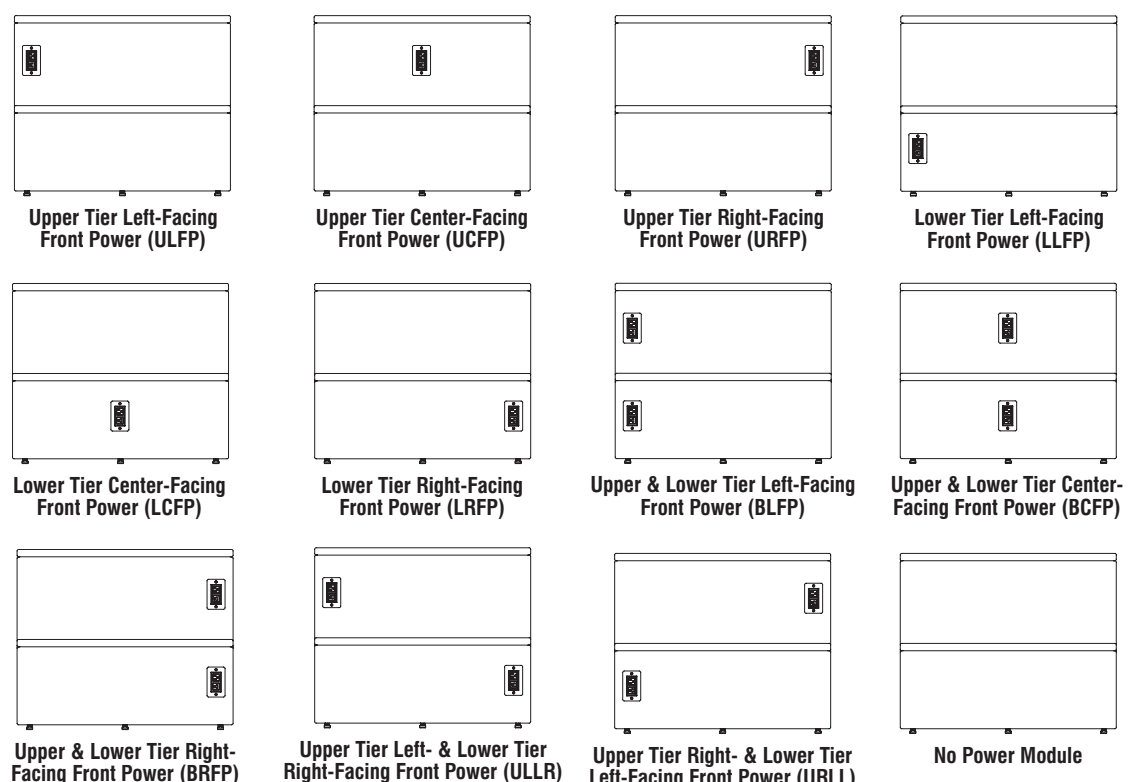
**Power Module
Locations (cont.)**

Two-Tier Seating - (straight, s-curve, inside curve 45 degree, & outside curve - 45 degree)

Straight, s-curve, inside curve - 45 degree, and outside curve - 45 degree units can accommodate one or two Axil Z power module(s) at one of eleven locations when specified: upper tier left- (ULFP), upper tier center- (UCFP), upper tier right- (URFP), lower tier left- (LLFP), lower tier center- (LCFP), lower tier right- (LRFP), upper & lower tier left- (BLFP), upper & lower tier center- (BCFP), upper & lower tier right- (BRFP), upper tier left- & lower tier right- (LRFP), upper tier right- & lower tier left-facing (RLFP). Units with a power module on the upper and lower tier will have two power cords with 3-prong plug.



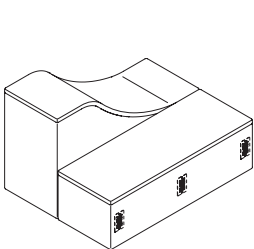
CL2R2, CL2R3, CL2R4, CL2SL, CL2SR, CL2VN, & CL2VT Power Module Locations



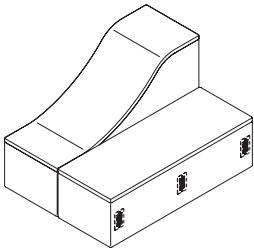
(front view) (CL2R3 shown)

Power Module
Locations (cont.)

Two-Tier Seating - (wave)
Wave - Left (CL2WL) and Wave - Right (CL2WR) units can accommodate one Axil Z power module at one of three locations when specified: lower tier left- (LLFP), lower tier center- (LCFP), and lower tier right-facing (LRFP).

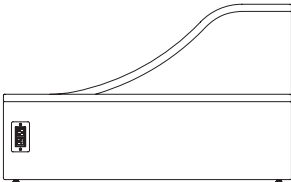


Wave - Left
CL2WL

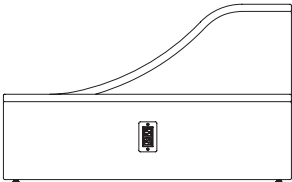


Wave - Right
CL2WR

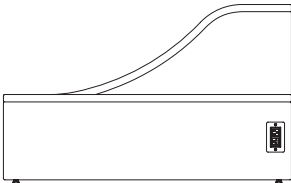
CL2WL & CL2WR Power Module Locations



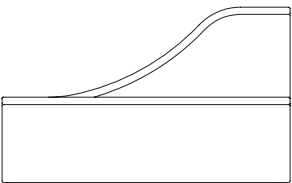
Lower Tier Left-Facing Front Power (LLFP)



Lower Tier Center-Facing Front Power (LCFP)



Lower Tier Right-Facing Front Power (LRFP)



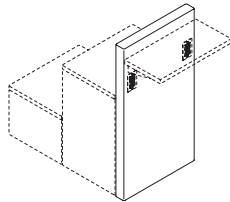
No Power Module

(front view) (CL2WL shown)

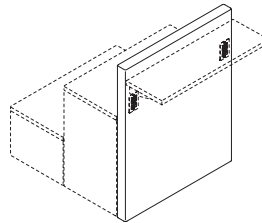
**Power Module
Locations (cont.)**

Wall (with worksurface)

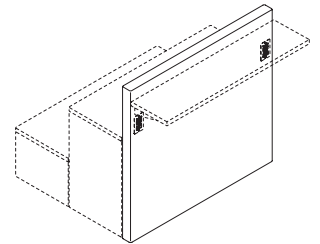
Straight - 24" Wide (CLSR2), Straight - 36" Wide (CLSR3), Straight - 48" Wide (CLSR4), Inside Curve (CLSCN), Inside Curve - 45 Degree (CLSVN), and Outside Curve - 45 Degree (CLSVT) units can accommodate one Axil Z power module at one of two locations when specified: left- (LFP), and right-facing (RFP).



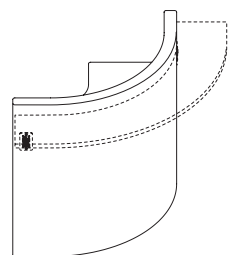
Straight - 24" Wide
CLSR2



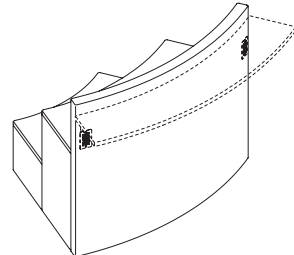
Straight - 36" Wide
CLSR3



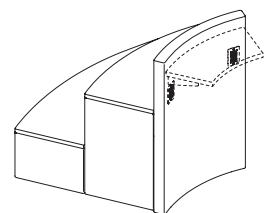
Straight - 48" Wide
CLSR4



Inside Corner
CLSCN

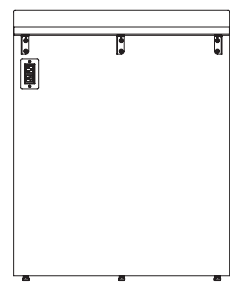


Inside Curve - 45 Degree
CLSVN

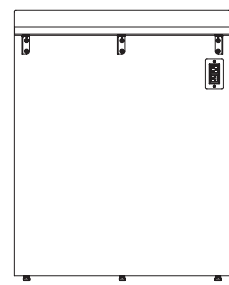


Outside Curve - 45 Degree
CLSVT

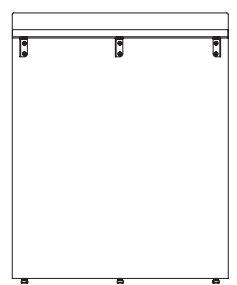
CLSR2, CLSR3, CLSR4, CLSCN, CLSVN, & CLSVT Power Module Locations



Left-Facing Back Power (LFP)



Right-Facing Back Power (RFP)

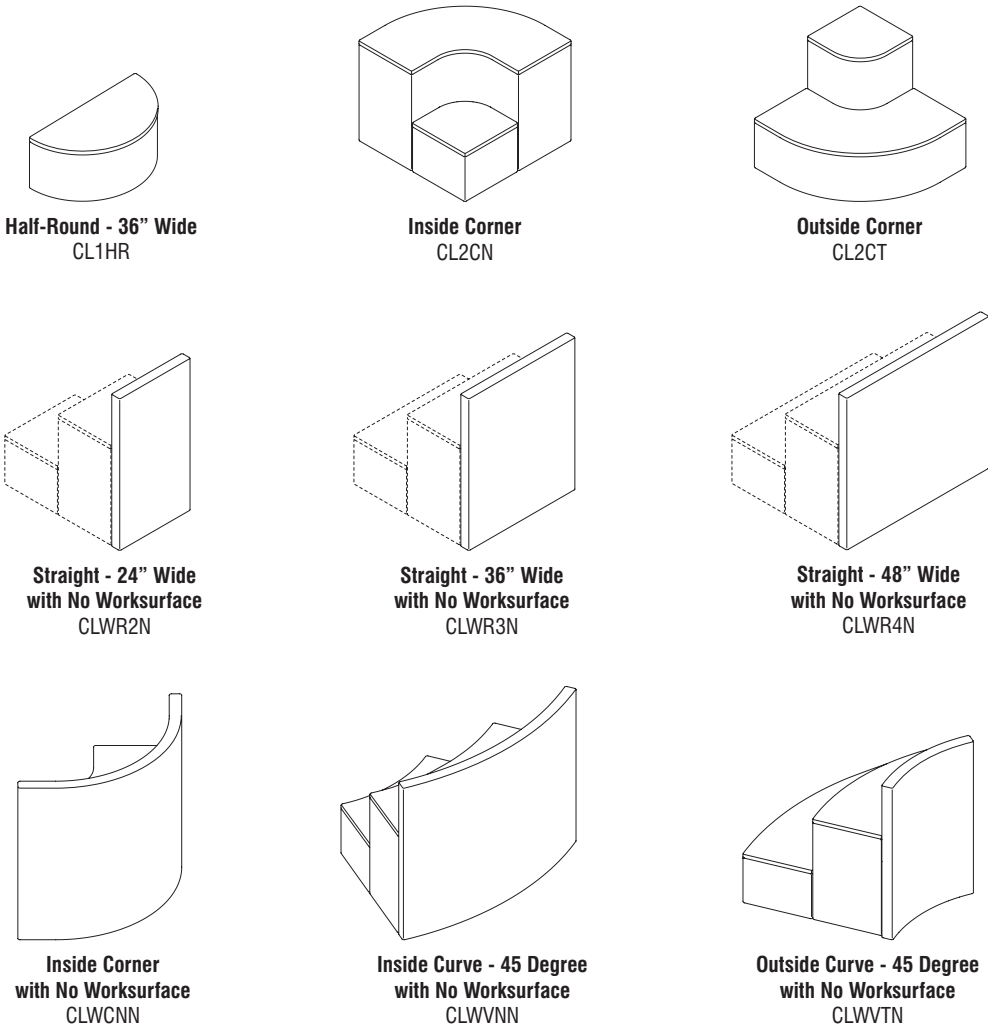


No Power Module

(back view) (CLSR3 shown)

**Power Module
Locations (cont.)**

No Power Module
One Tier half-round (CL1HR), two-tier inside corner (CL2CN), two-tier outside corner (CL2CN), wall straight - 24" wide with no worksurface, wall straight - 36" wide with no worksurface, wall straight - 48" wide with no worksurface, wall inside corner with no worksurface (CLWCNN), wall inside curve - 45 degree with no worksurface (CLWVNN), and wall outside curve - 45 degree with no worksurface (CLWVTN) units are not available with Axil Z power modules.



**CL1HR, CL2CN, CL2CN, CLWR2N, CLWR3N, CLWR4N, CLWCNN, CLWVNN, & CLWVTN
Not Available with Power Module**

KI
1330 Bellevue Street
Green Bay, Wisconsin 54302
1-800-424-2432
www.ki.com

KI is a registered trademark
of Krueger International, Inc.

© 2025 Krueger International, Inc.
All Rights Reserved
Code KI-PG-000046RI/KI/PDF/0525

