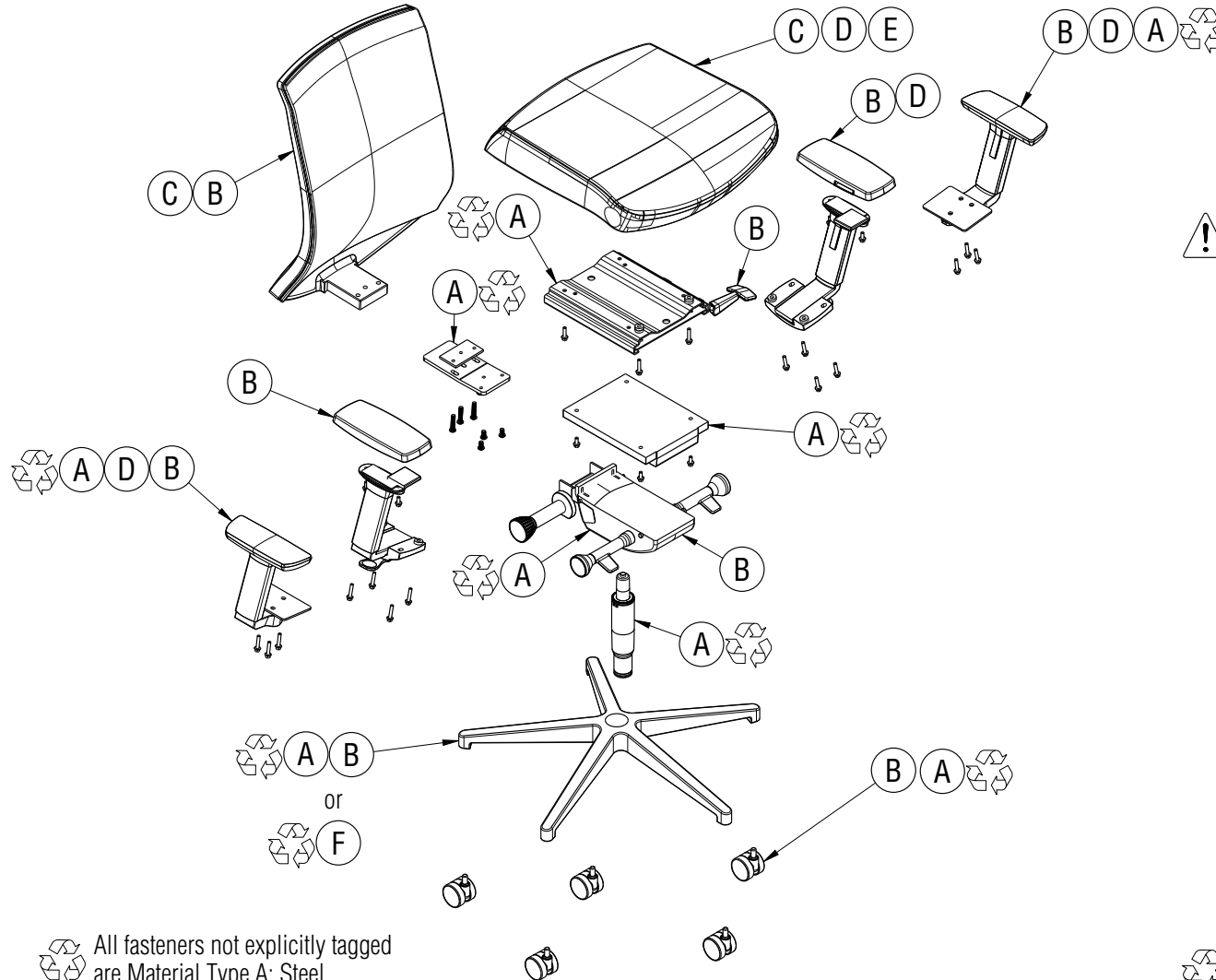


Disassembly Instructions

Signia Task Seating

Material Type: A. Steel B. Plastic C. Fabric D. Foam E. Wood F. Aluminum



Procedure:

1. Remove the screws holding the arms (if present) to the seat assembly. Remove the screws holding the backrest assembly to the seat assembly. Remove the screws holding the seat assembly to the seat plate.
2. Knock the seat plate and chair base off of the pneumatic cylinder. **WARNING: PNEUMATIC CYLINDER IS UNDER PRESSURE! REMOVE WITH CAUTION.**
3. Pry casters off of chair base.
4. Remove screws from arm assemblies and remove arm caps and mounting plates.
5. Remove fabric and foam from seat to expose wood seat board.
6. Cut open arm caps to remove steel insert.

General Notes:

1. Disassembly time: 20-30 minutes
2. This procedure assumes basic familiarity with hand tools and furniture terminology: no specialized training is required
3. All materials removed and disassembled shall be sorted and segregated with like materials and disposed of or recycled according to recycling availability or waste acceptance
4. For items to be recycled, refer to KI's End of Life Recycling Matrix and KI's End of Life Recovery Options Matrix, available at www.ki.com

All fasteners not explicitly tagged are Material Type A: Steel

Required Tools

