



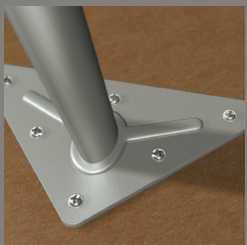
# Intellect<sup>®</sup> Activity Tables

flexible configurability | enhanced leg design | durable strength



Furnishing Knowledge<sup>®</sup>





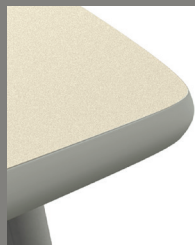
One time installation of six screws ensures long-lasting stability



Distinctive elliptical frame



Height adjustable – 22" to 32"



Curved sides for advanced configurability



Chrome Bag Hook – 1/4" Solid Wire Rod



Translucent Book Box – 4" h x 14" d x 15" w





Today's classrooms need to be agile and flexible. Class sizes fluctuate. Teaching styles adapt. Educational budgets get pinched. Intellect activity tables adeptly handle all these challenges.

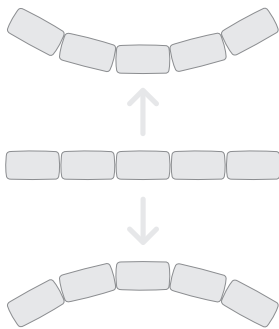
### The shape of things to come.

Six table shapes provide effective choices for any teaching or learning styles. Choose from rectangular, square, round, quarter round, sixth round and kidney shape.

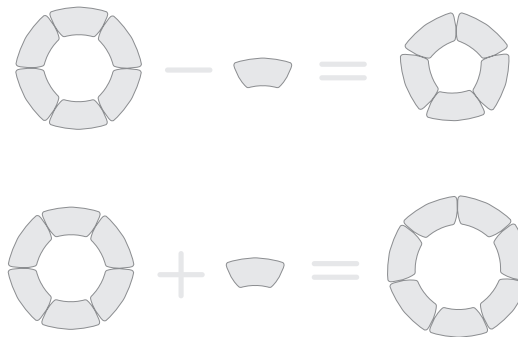
Curved sides allow tables to be configured quickly and easily. Table arrangements become fluid and organic.

### A fresh outlook.

A refreshed elliptical leg design improves knee clearance and eliminates pinch points. Made of heavy-duty, 15-gauge steel tubing, legs are welded to triangular plates to ensure strength and durability. The plates attach to worksurface with six screws to maintain long-lasting stability. Add a 10" height adjustment and you've got a table that functions flexibly, adapts to users and locations, and offers a discerning aesthetic.



The curved sides allow the tables to arc and become fluid in arrangement. This lets the user have virtually unlimited options.



Circular arrangements are no longer limited in size and number by the table shape.

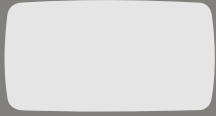


## Configurations.

Create unlimited room configurations with Intellect activity tables. Work with a single shape or mix-and-match different shapes to enhance collaborative, team, lecture, or multi-task learning environments. Develop configurations you've only imagined before with these versatile, durable tables.



Single Square



Rectangle



Round



Quarter Round



Sixth Round



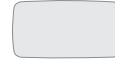
Kidney



Sixth Round



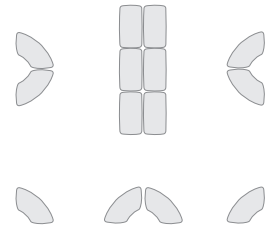
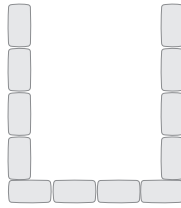
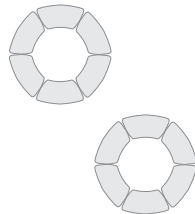
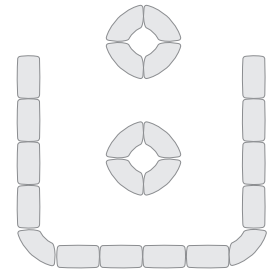
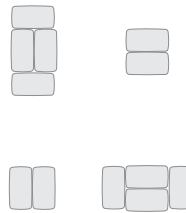
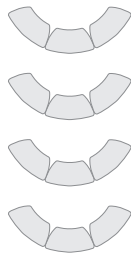
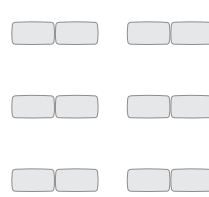
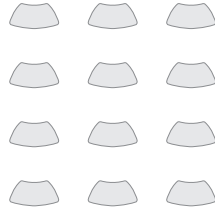
Rectangle



Rectangle



Quarter Round



## Choose from six shapes.



### Square Tables

Two sizes  
(36" and 48") Perfect for small group clusters or traditional configurations.



### Rectangle Tables

Fourteen sizes  
(18" thru 36" depths and 36" thru 84" lengths). Maximize workspace per student and create versatile configurations.



### Round Tables

Three sizes  
(36", 48" and 60"). Ideal for team activities and interaction.



### Quarter Round Tables

Two sizes  
(42" x 24" x 56" and 48" x 30" x 64") Create fluctuating circular arrangements.



### Sixth Round Tables

Two sizes  
(45" x 24" x 50" and 51" x 30" x 56"). Create fluctuating circular arrangements.



### Kidney Shape Tables

One size  
(48" x 72"). Oversized workspace. Ideal for teacher-led activities.

Learn more  
about Intellect



Printed on FSC® certified paper,  
using only vegetable-based inks,  
including metallics. Please recycle.



KI is a trusted expert for furniture and wall systems around the globe.

USA | CANADA | MEXICO | UK | EUROPE | ASIA | MIDDLE EAST

1330 Bellevue Street • P.O. Box 8100 • Green Bay, WI 54308-8100 • 1-800-424-2432 • www.ki.com

© 2020 Krueger International, Inc. All Rights Reserved. Code KI-BR-000164/KI/IP/0320  
KI and Furnishing Knowledge are registered trademarks of Krueger International, Inc.



Furnishing Knowledge®