

DuraLite®
Folding Tables
the ultimate lightweight solution



Furnishing Knowledge®



DuraLite® Folding Tables

DuraLite folding tables withstand the toughest demands of daily use. The unique honeycomb core, aluminum framework, superior materials, and innovative design result in a lightweight table that is strong and durable.

Easy and Safe

Easily carried by one person, DuraLite tables are perfect for any application that requires repeated set up and tear down (banquets, seminars, catered events and multi-use spaces). The lightweight design also diminishes the risk of back injuries from overexertion.

Strong

DuraLite tables exceed stringent tests for leg strength, weight load, and vertical drops onto hard surfaces. Replaceable corner covers and greater weight-bearing strength result from exclusive design innovations.

Choose the light one

Rectangular tables are available in three sizes with sand, blue grey or smooth walnut finishes and black frames. Round tables are available in two sizes with sand or blue grey finishes and black frames.

Finishes



Walnut
(Rectangle Only)



Blue Grey



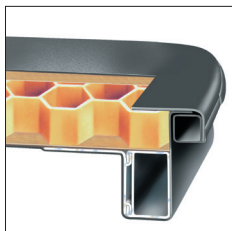
Sand

Frame



Black

Details



Amazingly strong, yet airy hexagonal structure offers unprecedented, weight bearing strength.



Rubber bumpers protect tables when stacked and keep tables in place on caddies. High-impact covers protect from damage upon impact.



Strong metal-to-metal attachments provide maximum holding power and ensure screw holes won't strip. Legs are easily replaceable.



A variety of storage caddies are available to meet your storage needs.

Specifications



Rectangular Top

Height: 29"

Width: 30"

Length: 60, 72 and 96"



Round Top

Height: 29"

Width/Length Range: 60 and 72"

Learn more about
DuraLite Folding Tables



Printed on FSC® certified paper,
using only vegetable-based inks,
including metallics. Please recycle.



KI is a trusted expert for furniture and wall systems around the globe.

USA | CANADA | MEXICO | UK | EUROPE | ASIA | MIDDLE EAST

1330 Bellevue Street • P.O. Box 8100 • Green Bay, WI 54308-8100 • 1-800-424-2432 • ki.com

© 2020 Krueger International, Inc. All Rights Reserved. Code KI-BR-000105/KI/IP/0320
KI and Furnishing Knowledge are registered trademarks of Krueger International, Inc.



Furnishing Knowledge®