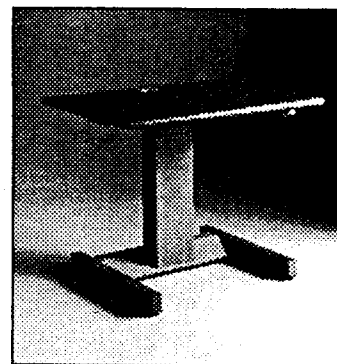


# Assembly Instructions

WorkZone Electrically Adjustable  
Model: EW2M and EW2MS



September, 1994

KI  
1330 Bellevue Street  
P.O. Box 8100  
Green Bay, Wisconsin 54308-8100

TEL (414) 468-8100  
FAX (414) 468-0280

## HARDWARE REQUIRED

- $\frac{3}{16}$ " Allen Wrench (1)
- $\frac{1}{2}$ " cable clamp (2)
- $\frac{1}{4}$ "-20 hex lock nut (4)
- #10 x 1" screw (20)
- $\frac{1}{4}$ "-20 x  $\frac{3}{4}$ " cap screw (1)
- $\frac{1}{4}$ "-20 x  $\frac{1}{2}$ " carriage screw (4)
- tilt handle (1)
- rivet (1)
- Arrow label (2)
- Board bracket (2)

**Caution:** Maintain a minimum of 1" clearance between adjustable work-surfaces and adjacent surfaces to avoid pinch area.

## MOUNTING THE FRONT WORKSURFACE FOR THE MANUAL TILT MODEL

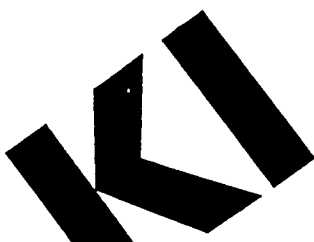
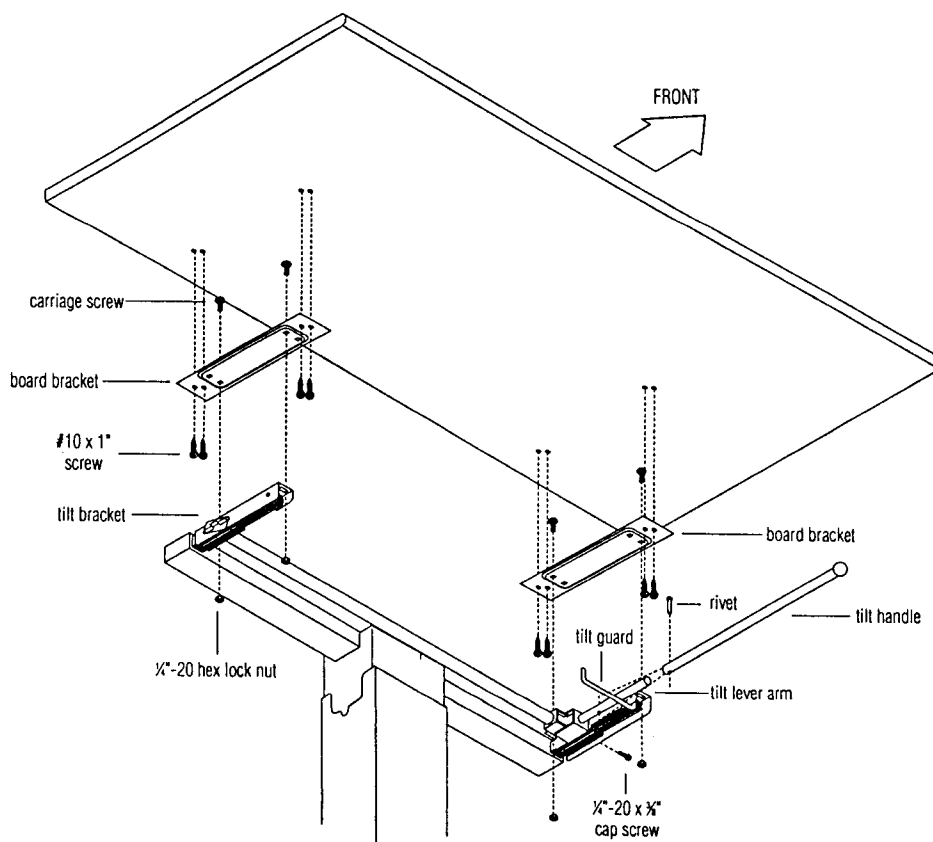
**Note:** Front worksurface must be installed before installing rear worksurface. Handle must also be assembled before worksurface is installed.

1. Mount handle assembly to tilt lever arm. Install rivet with head up. Tilt handle must remain inside tilt guard.
2. Place carriage screws through holes in board brackets as shown. Attach brackets to worksurface with #10 x 1"

screws. Align carriage screws of board brackets with slots in tilt brackets. Secure worksurface by installing one  $\frac{1}{4}$ "-20 hex lock nut on each front screw on either side of worksurface. **Do not tighten.** Release tilt handle and push down on worksurface to provide access to rear carriage screws. Install hex nuts. **Tighten all hex nuts.**

**Caution:** Worksurface is under tension when in tilted position. Worksurface may spring up when handle is released.

3. Release tilt handle and move worksurface to horizontal position. Install  $\frac{1}{4}$ "-20 x  $\frac{3}{4}$ " cap screw into right-hand end of tilt assembly.



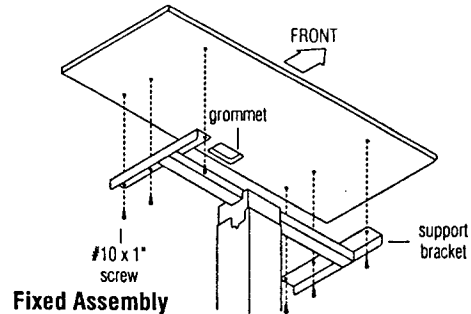
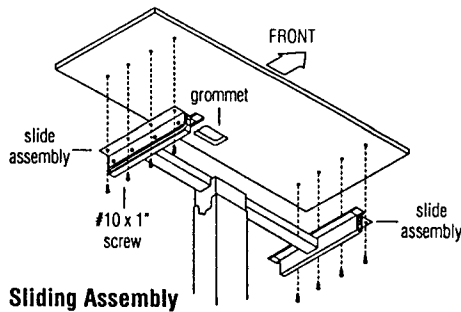
# WorkZone Electrically Adjustable Assembly



Assemble units as described herein only. To do otherwise may result in instability. All screws, nuts and bolts must be tightened securely and must be checked periodically after assembly. Failure to assemble properly, or to secure parts may result in assembly failure and injury.

## MOUNTING THE SLIDING OR FIXED REAR WORKSURFACE TO BASE

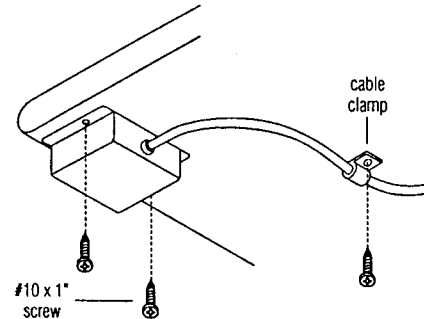
- Place worksurface onto rear base. Position worksurface with grommet(s) to rear.
- Align the holes in the worksurface with the slots in the slide assembly or support brackets and fasten with #10 x 1" screws. Slots are provided for side to side alignment of front and rear worksurfaces.



## MOUNTING CONTROL BOX TO FRONT WORKSURFACE

- Position control box at left or right side of worksurface over pre-drilled location.

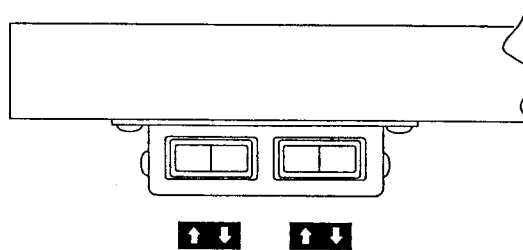
Use #10 x 1" screws to fasten control box to worksurface. Attach excess cord to underside of top with cable clamp using #10 x 1" screw.



## FASTENING ARROW LABELS TO SWITCH FACE (Optional)

Arrow labels are included with your hardware to indicate the direction of travel activated by each side of the switch.

The labels are to be attached to the switch face.



## TILT BRAKE ADJUSTMENT

It may be necessary to either increase or decrease the tension on the front worksurface of the manual tilt models. If this is required, please follow these directions to do so.

Lock brake handle and rotate center tube to tighten or loosen brake. **Setting brake too tight may damage the tilt mechanism.**

