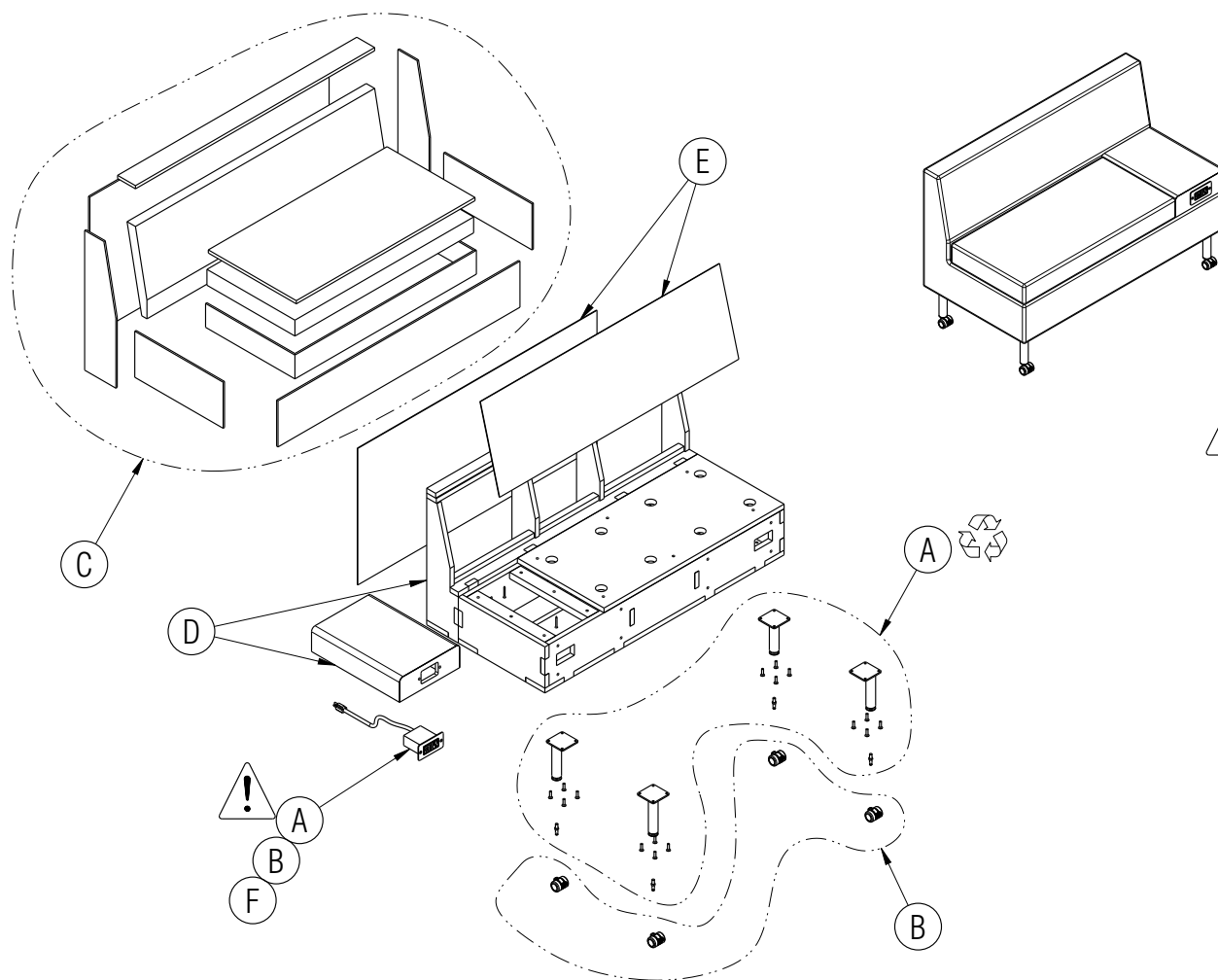


Disassembly Instructions

Tattoo Lounge

Material Type: A. Steel B. Plastic C. Foam D. Wood E. Cardboard F. Copper



Procedure:

1. Cut away the cloth and foam covering the wood frame.
2. Remove any cardboard or poly wrap elements.
3. Unscrew casters or leveling glides and remove. Remove the steel caster stems, pulling them from the plastic wheels.
4. Remove all screws holding the steel legs.
5. Remove the power module if present.



CAUTION: THE POWER MODULE CONTAINS MATERIALS SUITABLE ONLY FOR ELECTRONIC EQUIPMENT RECYCLING.

General Notes:

1. Disassembly time: 40-50 minutes
2. This procedure assumes basic familiarity with hand tools and furniture terminology: no specialized training is required
3. All materials removed and disassembled shall be sorted and segregated with like materials and disposed of or recycled according to recycling availability or waste acceptance
4. For items to be recycled, refer to KI's End of Life Recycling Matrix and KI's End of Life Recovery Options Matrix, available at www.ki.com

Fasteners not shown are all Material Type A: Steel

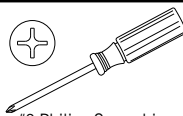
Required Tools



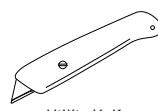
Gloves



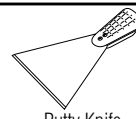
Safety Glasses



#2 Philips Screwdriver



Utility Knife



Putty Knife



Channel Lock Pliers



Combination Wrench