

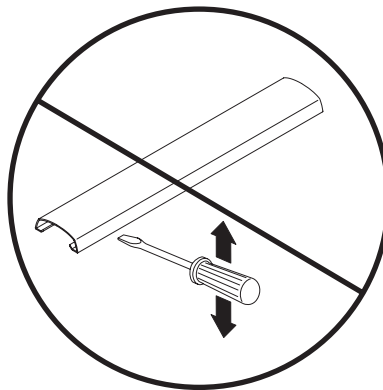
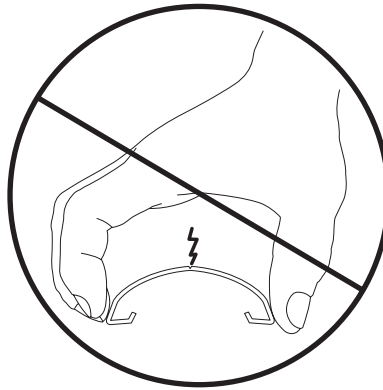
Installation Instructions

WireWorks® Veneer Trim Installation Instructions

May, 2002

KI
1330 Bellevue Street
P.O. Box 8100
Green Bay, Wisconsin 54308-8100

TEL (800) 424-2432
FAX (920) 468-0280



- **DO NOT** squeeze top caps or end-of-run (this will cause cracking)
- Please leave plastic bag on all wood parts until just prior to installation
- Please take **EXTRA CARE** during the installation of wood veneer components
- **DO NOT** use a hammer to "TAP" trim in place
- Please use extra caution when handling 2-way, 3-way, 4-way, 90°, end-of-run and height change connectors (these parts may crack under excessive pressure)
- If product is re-configured, take **EXTRA CARE** not to over flex top caps and end-of-runs (this will cause cracking)
- If product is re-configured, **SEPARATE** all 2 and 3-way connections before removing top caps.
- If product is re-configured, **NEVER PRY OFF WITH A SCREWDRIVER**