



MYPLACE™

Lounge Collection



FLEXIBILITY FOR ACTIVE AREAS

MyPlace lounge furniture offers a combination of rectilinear and curvilinear modular pieces to create different configurations for a variety of spaces – from modern school libraries to sophisticated corporate cafés. Its lightweight construction makes it easy to pull up an ottoman to join a conversation or push pieces together for collaborative touchdown meetings.







CONTEMPORARY DESIGN & FUNCTION

Make MyPlace uniquely yours with design elements such as contrasting fabrics, nearly 50 standard laminates, power inclusion, and five base styles. Use high-back seating for space delineation or to incorporate private areas within an open space.



MYPLACE STATEMENT OF LINE

Not all options shown. View full details at ki.com/myplace.

With a robust variety of shapes, sizes, table and shelving options, MyPlace lounge furniture offers functional space division while supporting collaboration. Designed for high-traffic areas, MyPlace is extremely durable with a 400-pound weight rating.

LOUNGE SEATING



Square



Five Star



Corner



Rectangle



30° Curve
Inside Facing



30° Curve
Outside Facing



45° Curve
Inside Facing



45° Curve
Outside Facing



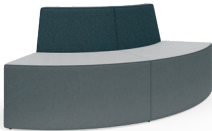
60° Curve
Inside Facing



60° Curve
Outside Facing



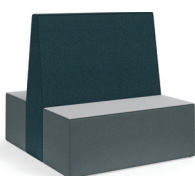
90° Curve
Inside Facing



90° Curve
Outside Facing



Extended Corner



Booth

Ottomans

Junior sizes available.



Round



Hexagon



Square



Crescent

NEW TO THE MYPLACE COLLECTION!

Active Base Ottomans

Junior sizes available.



Round



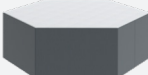
Hexagon

Ottomans

36" and 48" sizes



Round



Hexagon



Square



Crescent

CURVED SHELVING



30° Curved Starter
Outside Facing



30° Curved Adder
Outside Facing



45° Curved Starter
Outside Facing



45° Curved Adder
Outside Facing

TABLES



Round



Square



Inline



Inline with
Upholstered Pad

OPTIONS

Not available on all styles.

Back Height



Backless



32" Low-Back



48" High-Back



60" High-Back

Base Styles



Concealed Glides



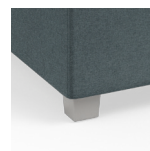
Casters



Poly Feet

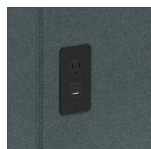


Wood Feet



Aluminum Feet

Power



125V & USB-A + C



1330 BELLEVUE STREET
GREEN BAY, WI 54308-8100
800.424.2432 / KI.COM

KI is a trusted expert for furniture and wall systems around the globe.
USA | CANADA | MEXICO | UK | EUROPE | ASIA | MIDDLE EAST
© 2024 Krueger International, Inc. All Rights Reserved.
KI-BR-000017/KI/IP/0624



LEARN MORE ABOUT
MYPLACE

*Dōni seating designed by Giancarlo Piretti
(shown on page 5)*