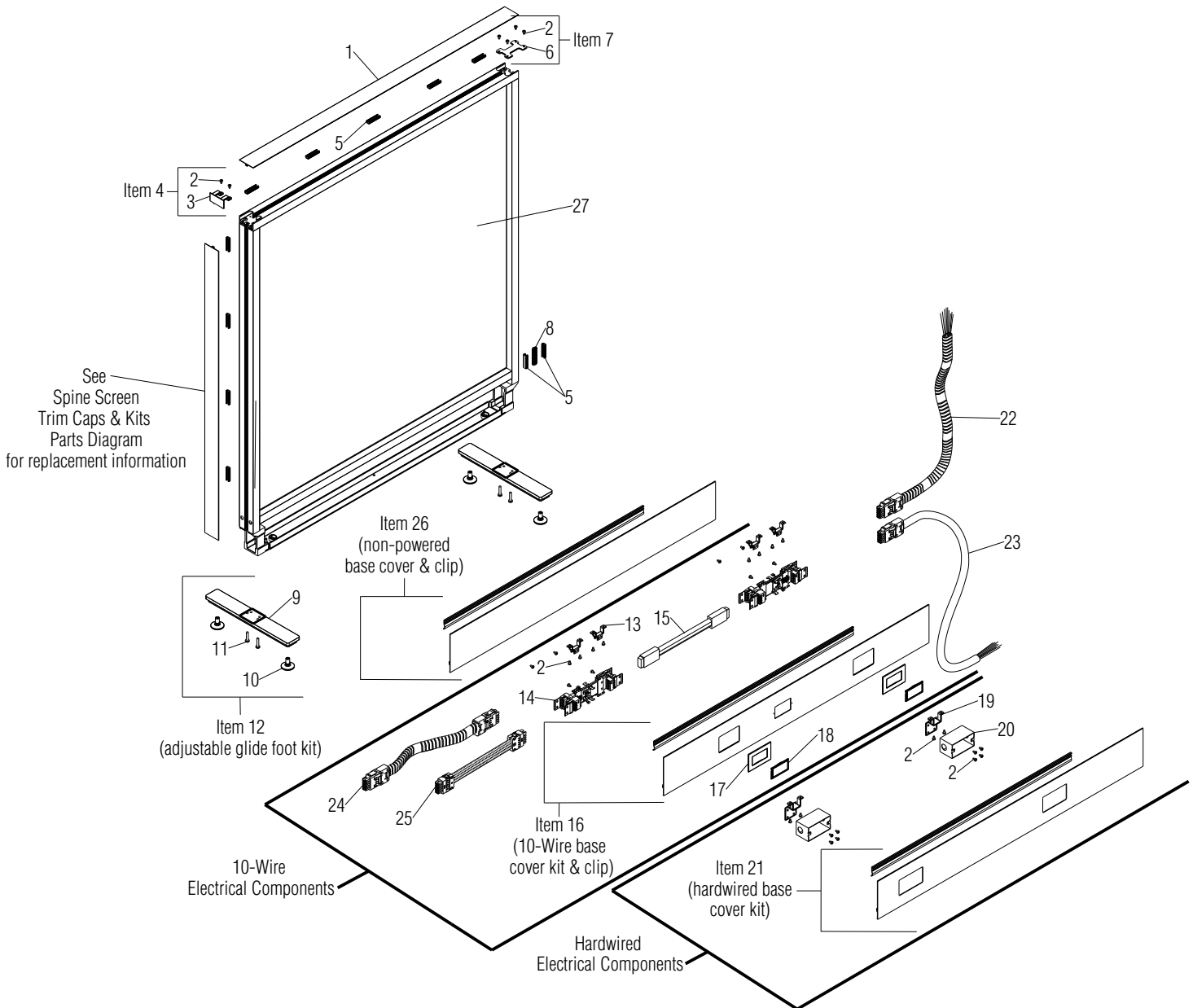


# Parts Diagram

## Tattoo™ Spine Screen

December 2021



# ■ Tattoo™ Spine Screen

## Parts Diagram

.XX = Select Color

Image only shows one side of base components.

Item 5 placed one every 12". Quantity varies depending on screen width.

Item 12 Foot Kit only includes foot and glides for one end of the screen.

Item 16 includes Items 17 & 18.

Item 21 does not include faceplates or receptacles. Must be supplied by customer.

Item 27 can be replaced by contacting KI Customer Service.

Item	Part Number	Item Description	Req Qty
1	52.7067.SIZE.XX	Top Cap, Screen	1
2	31.12.9070.X	Screw, #10-24 x 3/8" Torx Pan Head	4
3	52.7012.XX	Corner Cap, Screen	1
4	52.7012.KIT.XX	Kit, Corner Cap (includes hardware)	1
5	49.0376.X	Clip, Center Molding 2" Long	Varies
6	52.7024	Bracket, Screen Connector	1
7	52.7024.KIT	Kit, Screen Connector Kit	1
8	52.7093	Bottom Connector, Spine Screens	1
9	52.2339.XX	Foot, Adjustable Glide	2
10	46.0877	Assembly, Glide	4
11	50.1780	Screw, 1/4-20 x 2" Phillips Pan Head	4
12	52.2339.KIT.XX	Kit, Adjustable Glide Foot (includes glide)	2
13	52.7023	Bracket, Wireway Connector	4
14	52.7011	Wireway, 1286 6-2-2 Universal	2
15	46.0782.SIZE	Jumper, 810 6-2-2 10-Wire Electrical	1
16	TWSR	Base Cover, 10-Wire (52.7218)	1
	TWSR	Base Cover, 10-Wire with Data Cutout (52.7217, not shown)	1
17	49.0266.XX.X	Bezel, Base Cover	4
18	46.0074.XX.X	Plate, Bezel Filler	4
19	52.7025	Bracket, Chicago Electrical	4
20	49.3000	Box, Raco 4" x 2"	4
21	TWSR	Base Cover, Hardwired Electrical (52.7219)	1
	TWSR	Base Cover, Hardwired Electrical with Data Cutout (52.7220, not shown)	1
22	46.0784.144.X	Top Infeed, 10-Wire Electrical	1
23	47.0554.96.XX	Base Infeed, 10-Wire Electrical	1
24	TSPT.SIZE	Jumper, Pass-Through	1
25	TSIJ.SIZE	Inline Jumper, Screen-to-Screen	1
26	TWSR	Base Cover, Non-Powered	1
	TWSR	Base Cover, Non-Powered with Data Cutout	1
27	Contact KI	Core/Frame, Replacement	1

