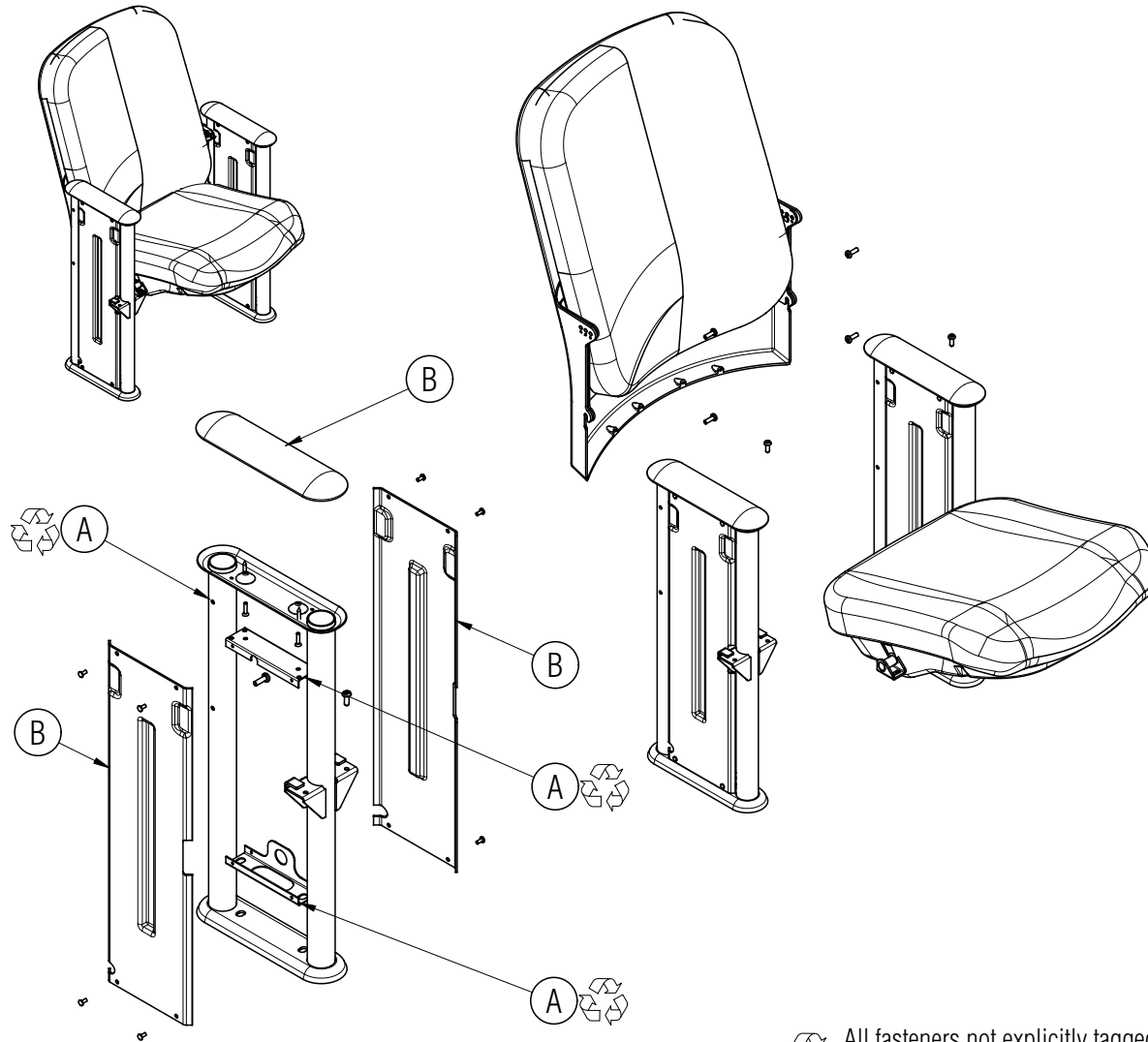


# Disassembly Instructions

## Concerto Auditorium Seating

Material Type: A . Steel B. Plastic



### Procedure:

1. Remove the screws holding the seat to the seat support column and remove the seat assembly.
2. Remove the screws holding the backrest onto the back supports and remove the backrest assembly.
3. Remove the screws holding the side panels to the seat support and remove the side panels. Remove the screws holding the upper side panel retaining bracket to the column and remove the bracket.
4. Remove the screws holding the arm cap onto the top of the seat support column and remove the arm cap.
5. Remove the nuts holding the column onto the floor and remove the column and lower side panel bracket.

(continued next page)

### General Notes:

1. Disassembly time: 15-30 minutes
2. This procedure assumes basic familiarity with hand tools and furniture terminology: no specialized training is required
3. All materials removed and disassembled shall be sorted and segregated with like materials and disposed of or recycled according to recycling availability or waste acceptance
4. For items to be recycled, refer to KI's End of Life Recycling Matrix and KI's End of Life Recovery Options Matrix, available at [www.ki.com](http://www.ki.com)

All fasteners not explicitly tagged or shown are Material Type A: Steel



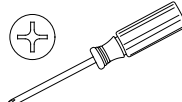
### Required Tools



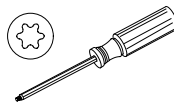
Gloves



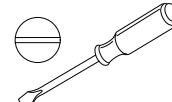
Safety Glasses



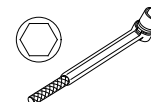
Philips Screwdriver



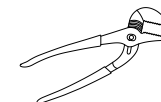
Torx Screwdriver



Flat Screwdriver



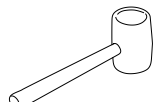
Hex Socket Wrench



Channel Lock Pliers



Pry Bar

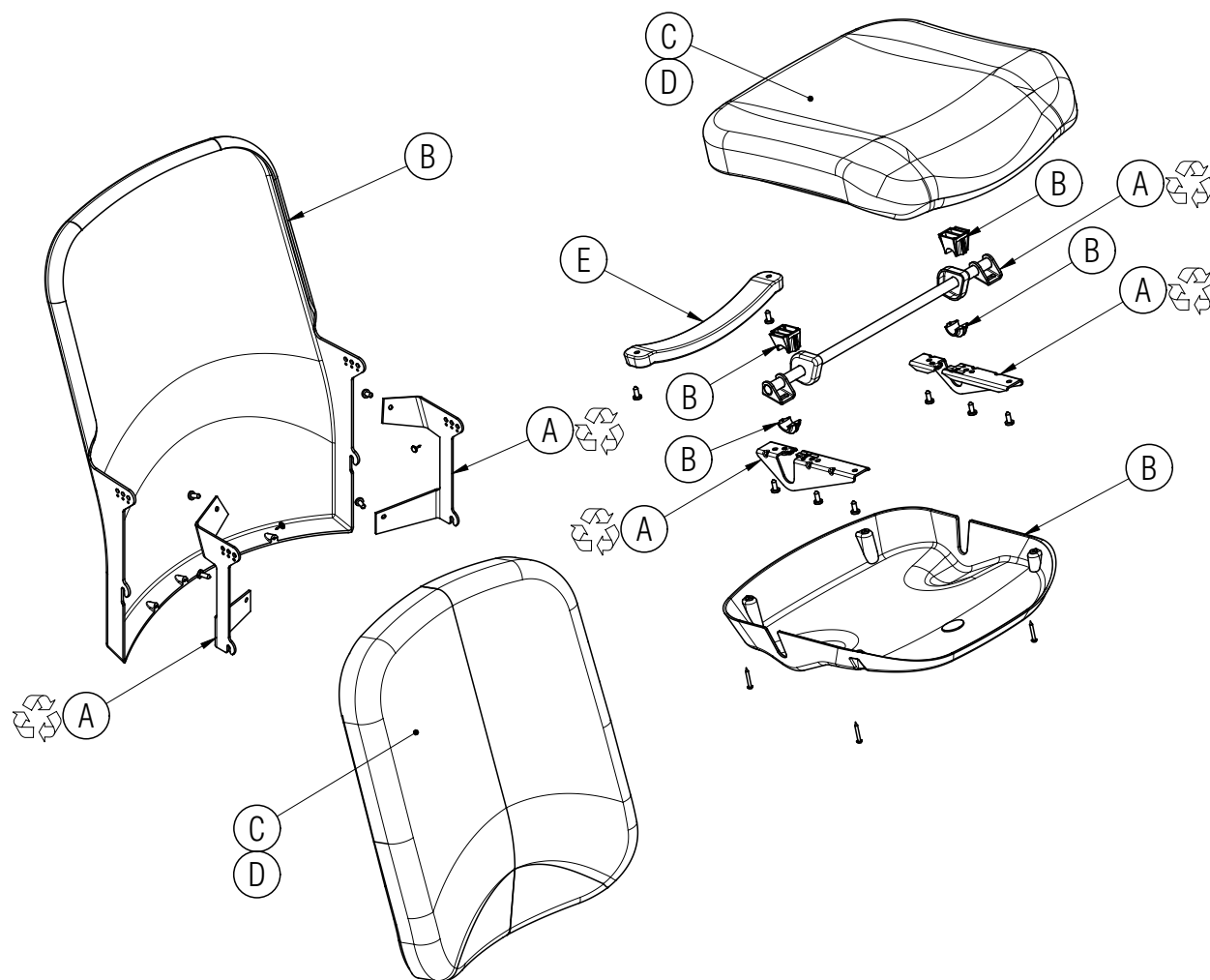


Rubber Mallet

# Disassembly Instructions

## Concerto Auditorium Seating

Material Type: A. Steel B. Plastic C. Foam D. Fabric E. Cast Iron



Procedure (continued):

6. Remove the backrest shroud from the backrest assembly and remove the screws holding the backrest support brackets to the back of the backrest. Remove the brackets.
7. Remove the screws holding the seat shroud to the seat and remove the seat shroud. Remove the screws holding the seat pivot brackets to the seat and remove the brackets, the pivot axle and the pivot bushings.
8. Remove the counterweight from bottom of the seat.

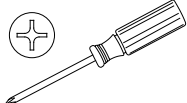
### Required Tools



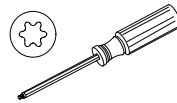
Gloves



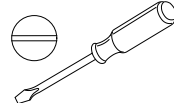
Safety Glasses



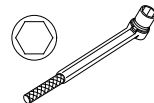
Phillips Screwdriver



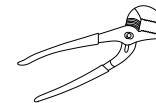
Torx Screwdriver



Flat Screwdriver



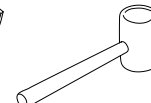
Hex Socket Wrench



Channel Lock Pliers



Pry Bar



Rubber Mallet