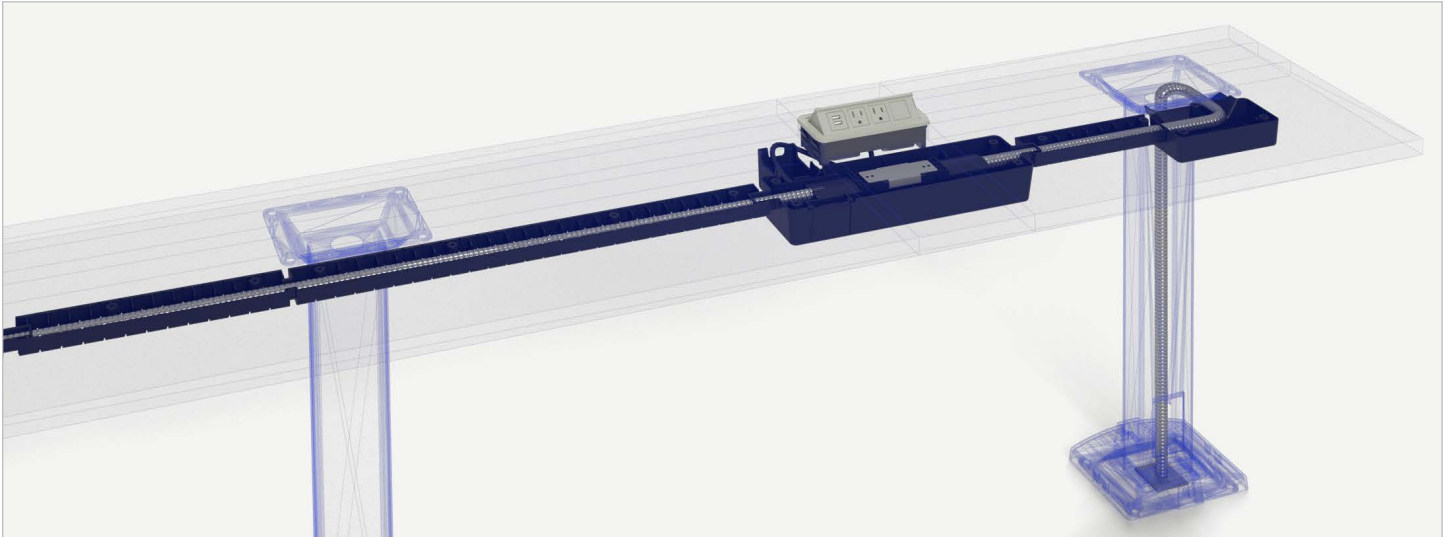


Fixed Table Power Enhancements

Stream-lined support for user laptops and personal devices



In-surface



Pop-up



Undersurface

Power with USB Charging

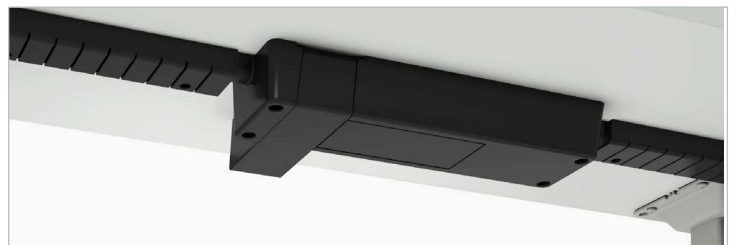
Three new power module options (in-surface, pop-up and undersurface in black, cool grey, cottonwood or warm grey) each deliver power and USB charging to support users' personal devices. Each module features two simplex receptacles and two USB charging ports. The 4-wire 2-circuit system powers up to 8 modules to accommodate a row of 16 students.

Improved Row-to-Row Spacing

Streamlined power and wire management system permits shallower depth worksurfaces and improved row-to-row spacing. Minimum worksurface depths of 12" can be achieved on certain Seminar and University fixed table configurations.

Tamper Resistance

Innovative shroud design conceals plugs and prevents users from tampering with or unplugging the power supply. Meets UL requirements.



[VIEW FIXED TABLE POWER VIDEO](#)

