

Repair & Replacement Instructions ■

Pirouette® Tables

Nesting Base - Optional Spacer Pads

August 2019

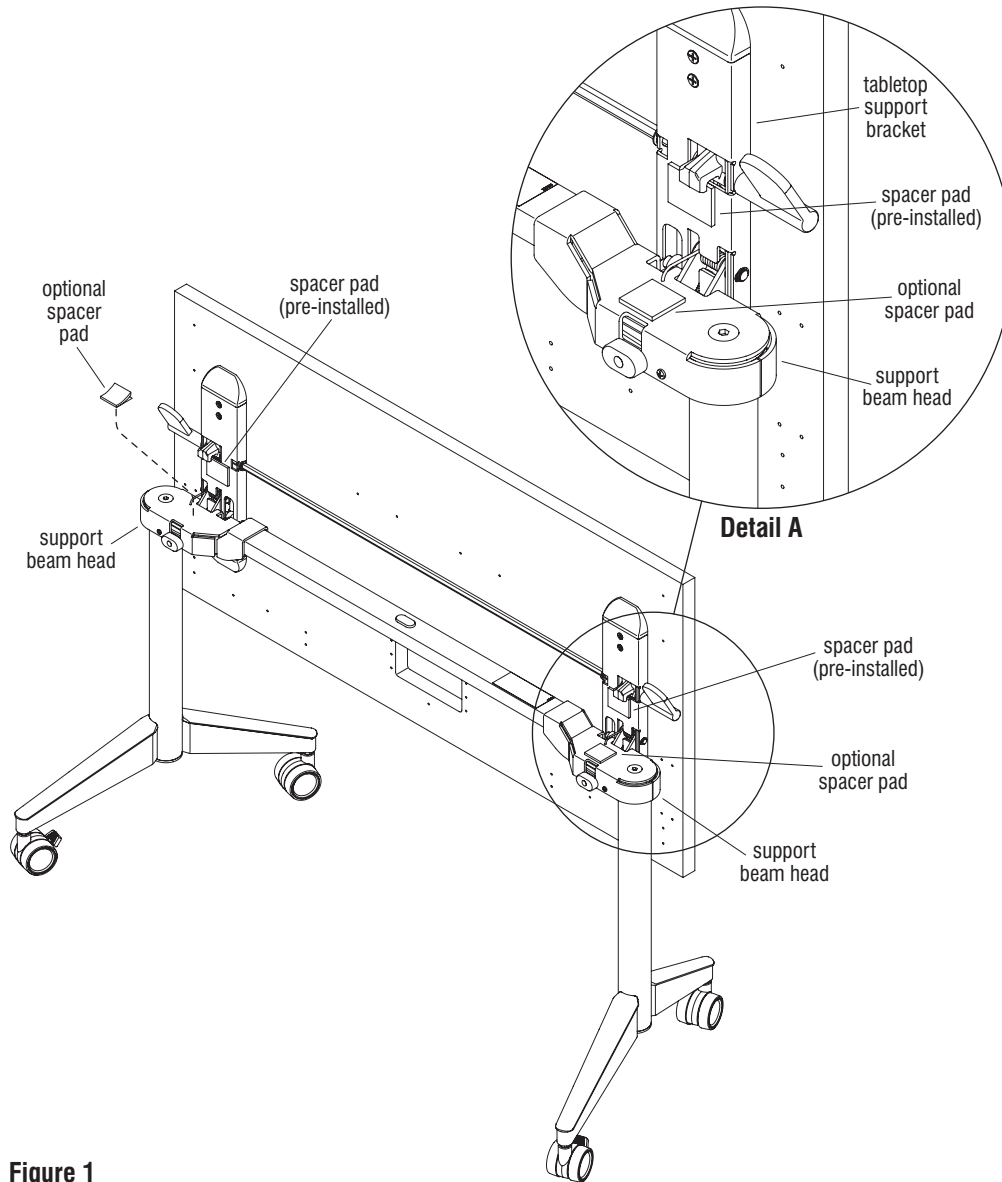


Figure 1

Note: To prevent the tabletop from wobbling, optional spacer pads may be placed between each tabletop support bracket and support beam head. Optional spacer pads may be adhered in one of two locations, to the top of the support beam head or in place of a removed pre-installed spacer pad.

1. Flip the tabletop lock paddles up and adjust the Pirouette Table to the upright nesting position (Figure 1).
2. Position an optional spacer pad in the desired location so that when the table is adjusted for use, the spacer pad rests between the tabletop support bracket and the support beam head. If the optional spacer pad will adhere to the support bracket, first remove the pre-installed spacer pad.
3. Remove the backing from the optional spacer pad. Apply the spacer squarely to the desired location (Figure 1 & Detail A).
4. Repeat steps 2 & 3 to install the second optional spacer bracket on the opposite side of the nesting table support beam assembly.



Assemble units as described herein only. To do otherwise may result in instability. All screws, nuts and bolts must be tightened securely and must be checked periodically after assembly. Failure to assemble properly, or to secure parts may result in assembly failure and personal injury.

