

Assembly Instructions ■

Pirouette® Tables

Table-to-Table Ganging

September 2014

Side-to-Side Ganging, 24/30" Pirouette Nesting & Fixed-Base Tables

Note: Take note of correct ganging hook and peg mounting locations to assure proper latching for each type of installation. The instructions on this page detail ganging of 24 & 30" wide tables side-to-side. For 18" wide tables, see instructions on pages 3 & 4.

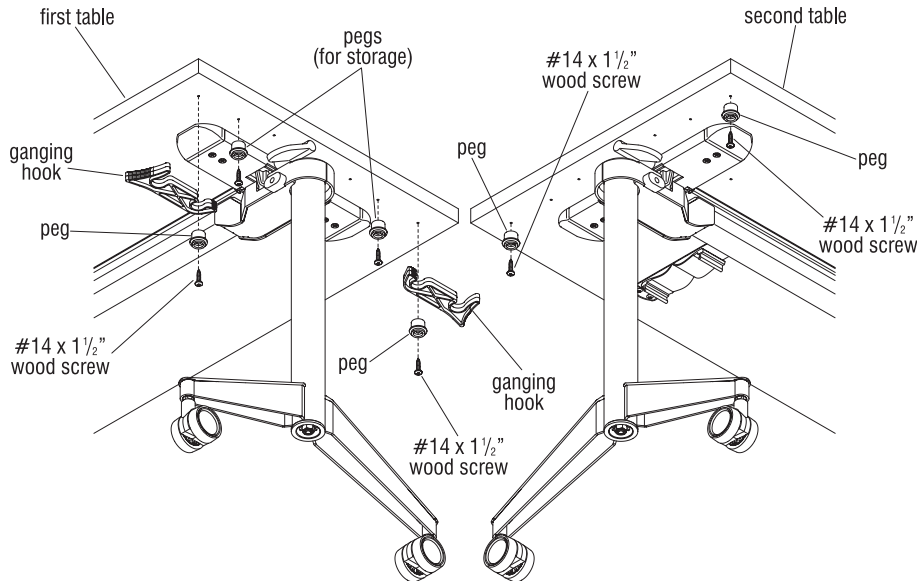


Figure 1 - 24/30" Wide Nesting Tables with Side-to-Side Ganging

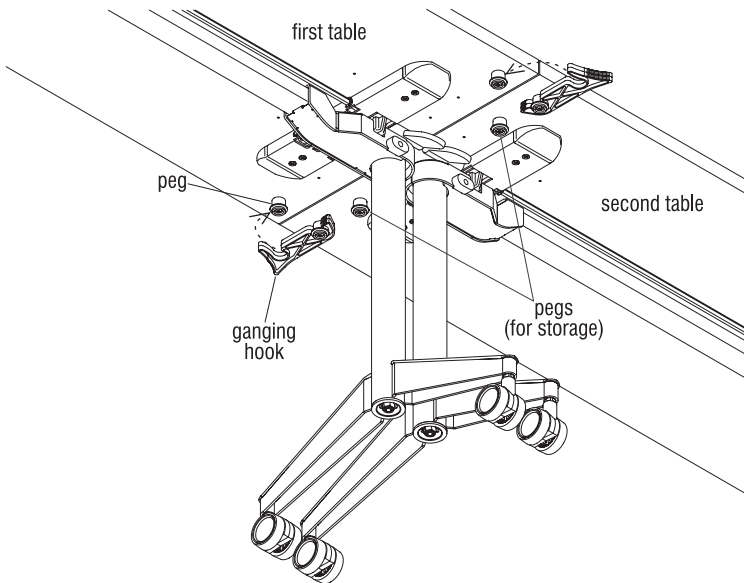
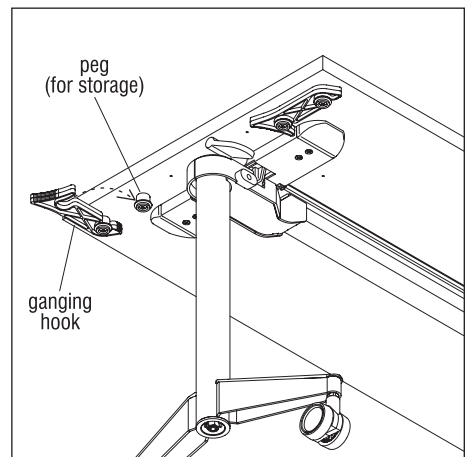


Figure 2 - 24/30" Wide Nesting Tables with Side-to-Side Ganging

1. As illustrated, and based on the table width, position the two ganging hooks as shown, at the underside of the first table. Install the two hooks to the first table using two pegs and #14 x 1 1/2" wood screws. Next, install two pegs at the other illustrated locations for future use to store ganging hooks (Figure 1).
2. At the second table, install two pegs in line with the first set of pegs (Figure 1).
3. Move tables together and swing the ganging hooks of the first table to securely engage the pegs under the second table (Figure 2).
4. When tables have been un-ganged, simply swing the two ganging hooks around and snap them onto the two pegs installed for storage (Detail A).



Detail A - Ganging Hook Storage



Assemble units as described herein only. To do otherwise may result in instability. All screws, nuts and bolts must be tightened securely and must be checked periodically after assembly. Failure to assemble properly, or to secure parts may result in assembly failure and personal injury.

■ Pirouette® Tables - Table-to-Table Ganging

Assembly Instructions



Assemble units as described herein only. To do otherwise may result in instability. All screws, nuts and bolts must be tightened securely and must be checked periodically after assembly. Failure to assemble properly, or to secure parts may result in assembly failure and personal injury.

Back-to-Back Ganging, 18, 24 & 30" Pirouette Nesting & Fixed Base Tables

Note: Take note of the correct orientation of ganging hooks and peg mounting locations to assure proper latching for back-to-back ganging (Figure 3).

1. As illustrated in Figure 3, and following instructions for ganging hook installation on page 1, install hooks and pegs for back-to-back ganging of two tables (Figures 1 & 3). Next, install two pegs at the other illustrated locations for future use to store ganging hooks (Figure 3).
2. Move tables together and swing the ganging hooks of the first table to securely engage the pegs under the second table (Figure 3).
3. When tables are un-ganged, simply swing the two ganging hooks around and snap them onto the two pegs installed for storage (Detail A).

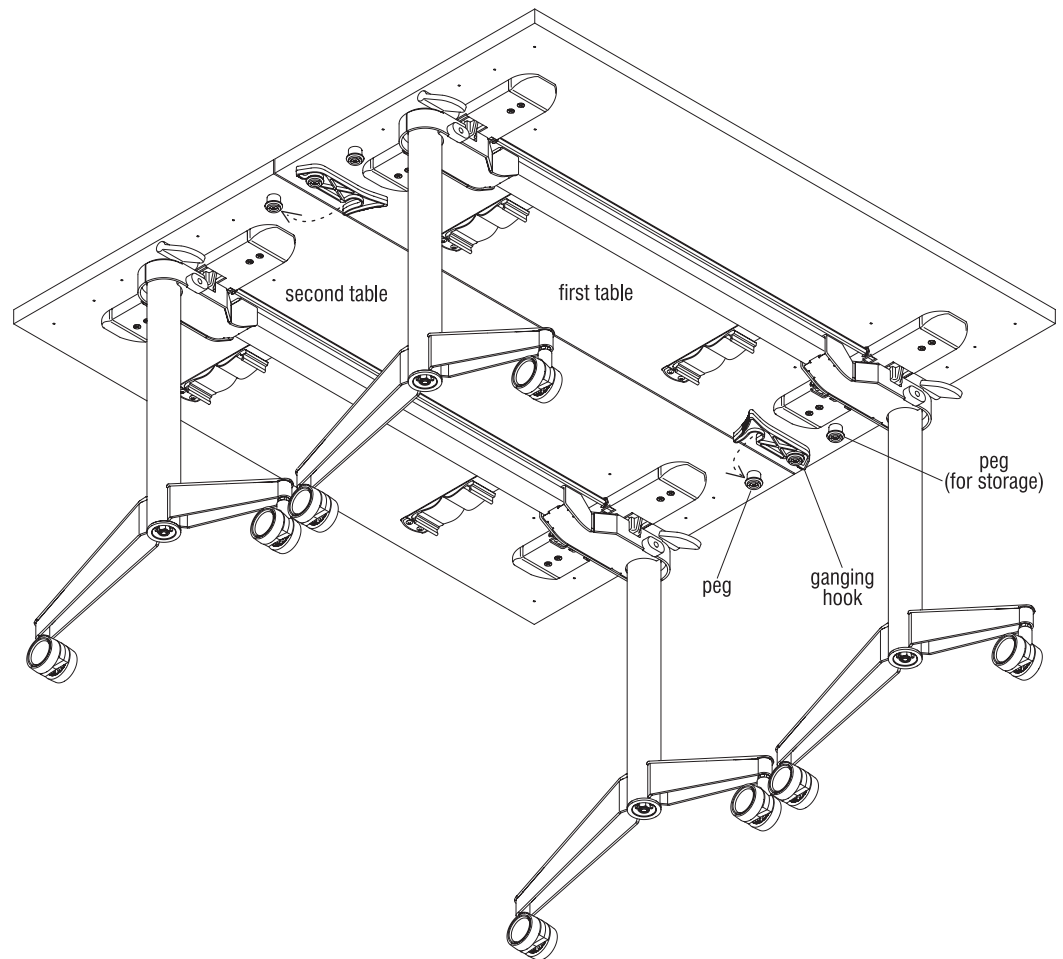


Figure 3 - Nesting & Fixed-Base Tables with Back-to-Back Ganging



Assemble units as described herein only. To do otherwise may result in instability. All screws, nuts and bolts must be tightened securely and must be checked periodically after assembly. Failure to assemble properly, or to secure parts may result in assembly failure and personal injury.

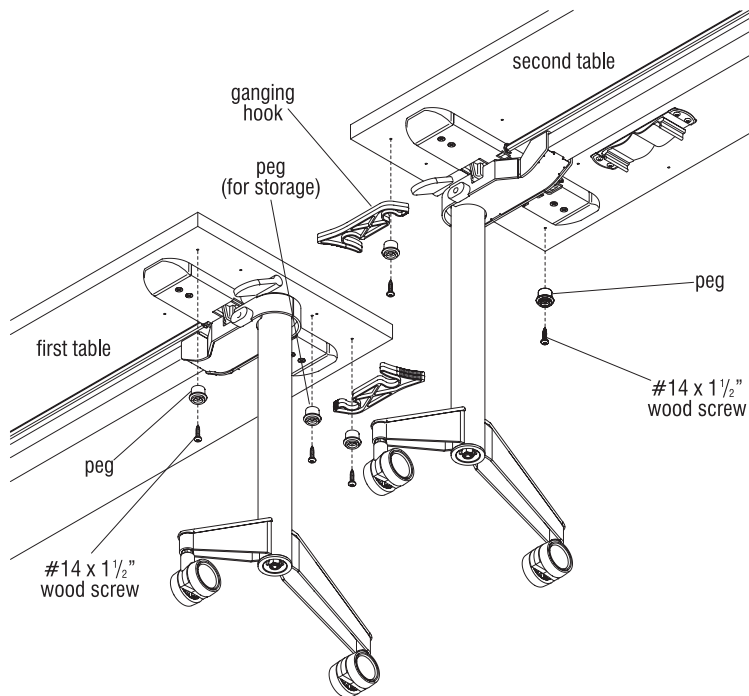


Figure 4 - 18" Wide Nesting Tables with Side-to-Side Ganging

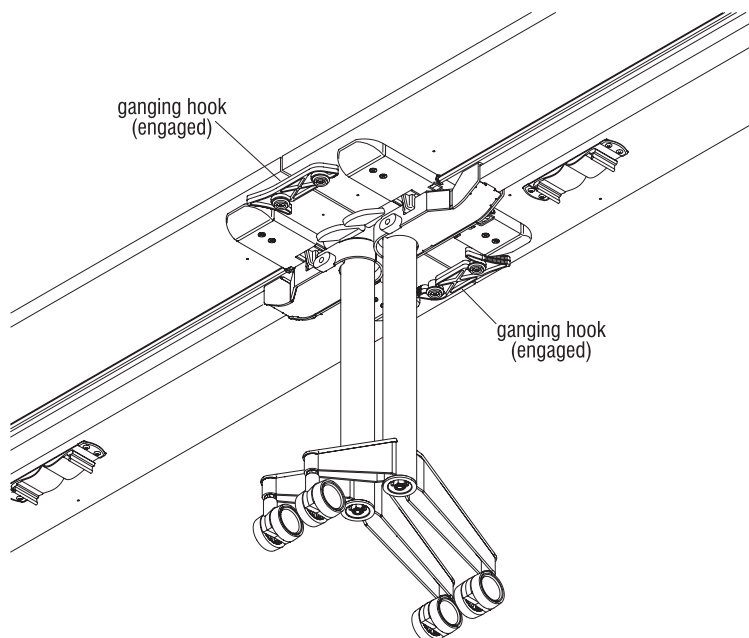


Figure 5 - 18" Wide Nesting Tables with Side-to-Side Ganging

Side-to-Side Ganging, 18" Wide Pirouette Nesting Tables

Note: Take note of correct ganging hook and peg mounting locations to assure proper latching for side-to-side installation. The instructions on this page describe hook and peg installation for ganging of 18" wide tables side-to-side. For 24 & 30" wide tables, see page 1 instructions.

1. As illustrated, and based on the 18" table width, position the two ganging hooks as shown, one at the underside of the first table and one at the underside of the second table, at the opposite side. Install each hook using one peg and a #14 x 1 1/2" wood screw (Figure 4).
2. Next, install three pegs at the other illustrated locations, two for ganging tables together and one for use to store the ganging hook (Figure 4).
3. Move tables together and swing the ganging hooks of each table around and engage the pegs of the opposite table, ganging the tables together (Figure 5).
4. When tables are un-ganged, simply swing one ganging hook around and out of the way and the other hook around and snap it onto the peg installed for storage (Figure 4 & Detail A).

■ Pirouette® Tables - Table-to-Table Ganging

Assembly Instructions



Assemble units as described herein only. To do otherwise may result in instability. All screws, nuts and bolts must be tightened securely and must be checked periodically after assembly. Failure to assemble properly, or to secure parts may result in assembly failure and personal injury.

Side-to-Side Ganging, 18" Wide Pirouette Fixed-Base Tables

Note: Take note of correct ganging hook and peg mounting locations to assure proper latching for side-to-side installation. The instructions on this page describe hook and peg installation for side-to-side ganging of 18" wide Fixed-Base Tables. For 24 & 30" wide fixed base tables, see page 1 instructions.

1. As illustrated, and based on the 18" table width, position the two ganging hooks as shown, one at the underside of the first table and one at the underside of the second table, at the opposite side. Install each hook using one peg and a #14 x 1 1/2" wood screw (Figure 6).
2. Next, install four pegs at the other illustrated locations, two for ganging tables together and two for use to store the ganging hooks (Figure 6).
3. Move tables together and swing the ganging hooks of each table around and engage the pegs of the opposite table, ganging the tables together (Figure 7).
4. When tables are un-ganged, simply swing each ganging hook around and snap it onto the peg installed for storage (Figure 7).

Note: Back-to-Back ganging for 18" wide fixed-base tables is the same as nesting tables. See page 2 for details.

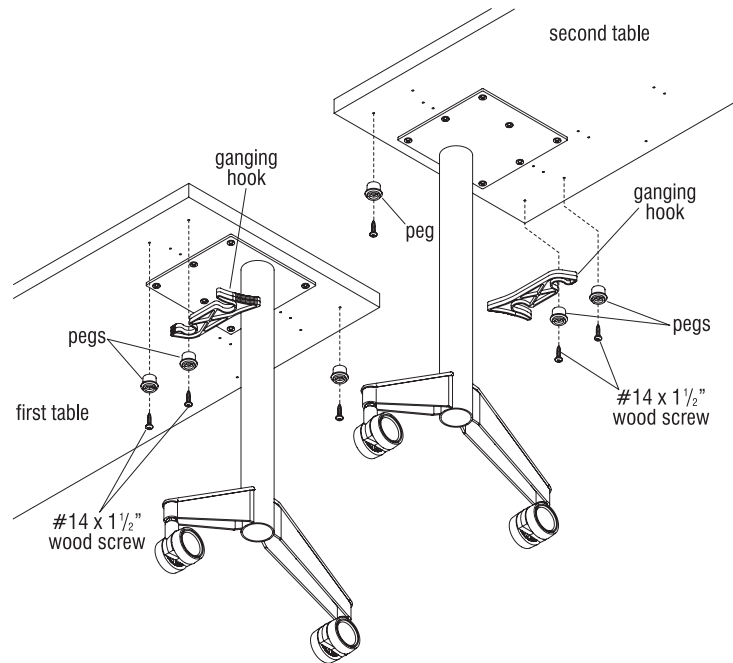


Figure 6 - 18" Fixed-Base Tables with Side-to-Side Ganging

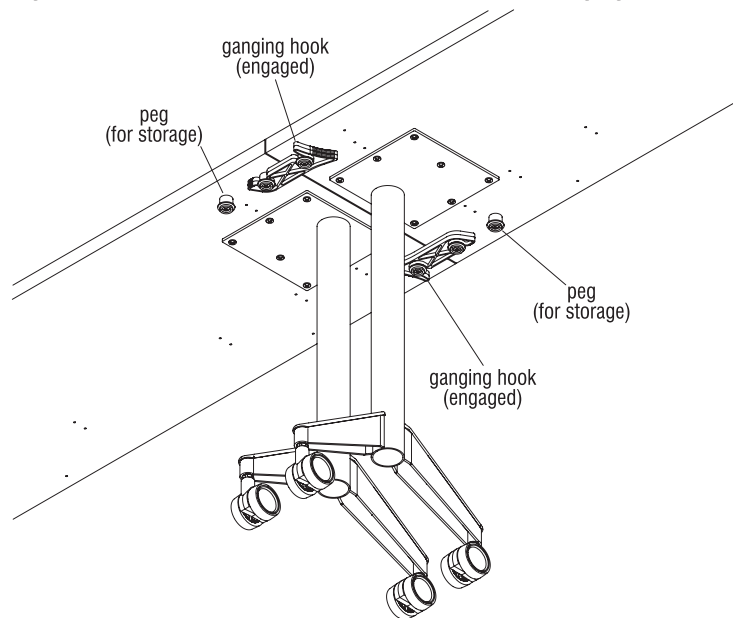


Figure 7 - 18" Wide Fixed-Base Tables with Side-to-Side Ganging