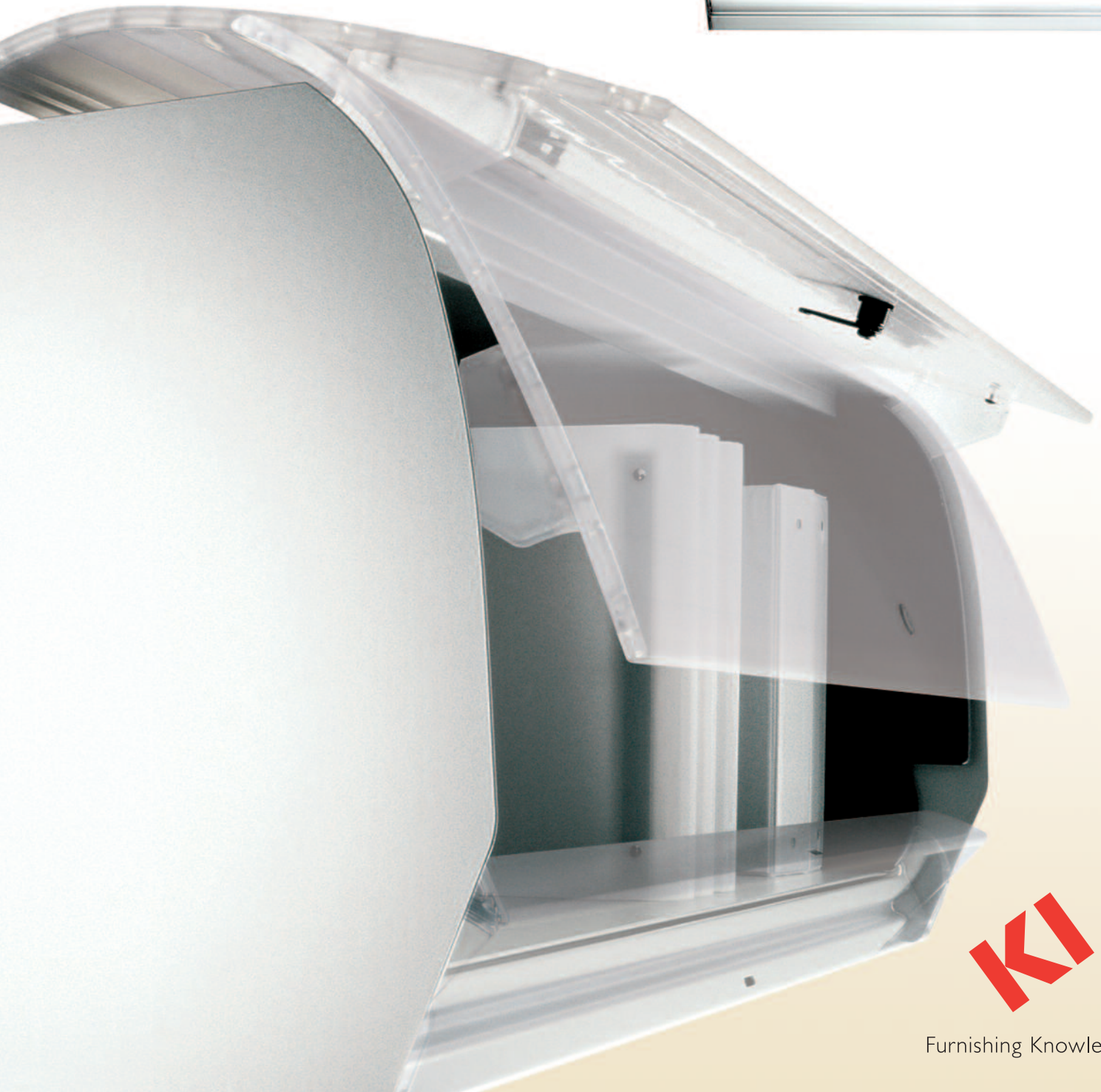


# Balance<sup>®</sup>

## Overhead Storage

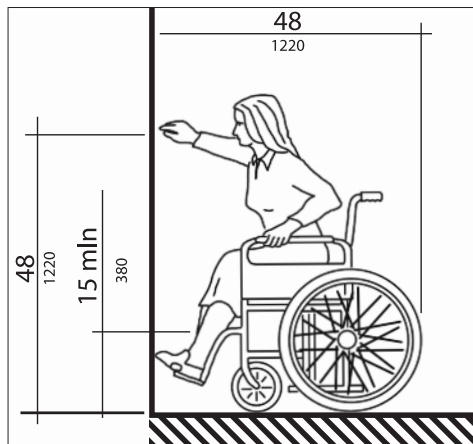
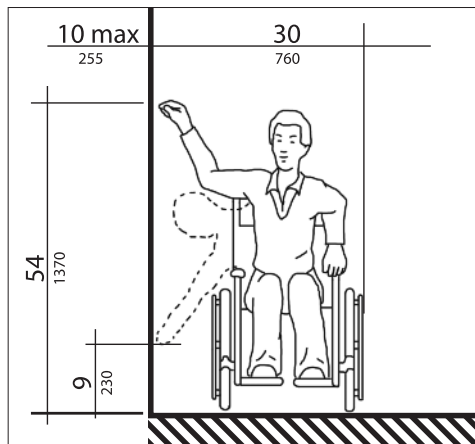
easy to open | easy to close | easy on the eyes

In compliance with the  
Americans with Disabilities Act (ADA)



Furnishing Knowledge<sup>®</sup>

# Smooth operator.



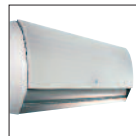
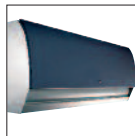
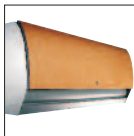
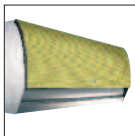
## The perfect balance between ADA requirements and design.

A Balance overhead mounted to a 66"-high panel opens and closes with a reach of 49", making it wheelchair accessible for a side reach. A 48"-high front reach can be achieved by lowering the overhead 1" on the panel. Both measurements meet ADA 4.2.5 and 4.2.6

To comply with ADA 4.27.4, the lower door of a Balance overhead was designed for operation with a closed fist or a hook. It requires only about two foot-pounds of force to open and close, which is less than half the ADA maximum guideline of five foot-pounds of force.

The spring-assisted mechanism ensures silent, smooth operation and compliance with the ADA. The door of the Balance overhead will never spring open or slam shut.

Choose from a wide variety of color combinations to create the look you desire. The cabinet is available in all KI powdercoat colors. The door is available in the five KI core colors, high-pressure laminate and vertical surface fabrics. Or, go translucent for ultimate appeal!



## Balance® Overhead Storage

Please stay seated. With Balance overheads, you don't need to stand to operate. Simply reach up and open using either the upper or lower door – both swing open simultaneously and stay balanced at any point.

The design is in the details. Balance overhead doors open to the outside of the cabinet, which helps prevent the storage of unsightly papers on the top of the cabinet, yet there is a narrow space at the rear of the cabinet to display plants or other small items. The cabinet also accommodates both A4 and foolscap binders.

Balance overheads come with a lifetime warranty on all moving parts. You also get our promise that Balance overheads are compatible with all KI product lines.

Plus, Balance overheads are one of the lowest priced mechanically assisted overheads in the industry.

Learn more about  
Balance Overhead Storage



**GSA** Contract Holder

Printed on FSC® certified paper  
using only vegetable-based inks,  
including metallics. Please recycle.



KI is a trusted expert for furniture and wall systems around the globe.  
USA | CANADA | MEXICO | UK | EUROPE | ASIA | MIDDLE EAST | AUSTRALIA

1330 Bellevue Street • P.O. Box 8100 • Green Bay, WI 54308-8100 • 1-800-424-2432 • www.ki.com

© 2012 KI All Rights Reserved. Litho in USA. Code KI-00536R2/HC/P/1112  
KI and Furnishing Knowledge are registered trademarks of Krueger International, Inc.



Furnishing Knowledge®