

SOLSTICE
REVE™ COLLECTION



SIROCCO
27.381.011

SOLSTICE
REVE™ COLLECTION



KALEIDOSCOPE
27.381.109



SERAPHINE
27.381.022



ECLIPSE
27.381.052



ETESIAN
27.381.076



GAIA
27.381.032



AURALUNE
27.381.061



QUIETUDE
27.381.096



TRADEWIND
27.381.084



PALLAS

SOLSTICE

APPLICATION
Upholstery

CONTENT/BACKING
100% Hyphyn™ Biodegradable Vinyl
100% Hyphyn™ Biodegradable Polyester

WIDTH
54 inches



PERFORMANCE
Resilience® / Bleach Cleanable

ABRASION
250,000 Double Rubs

REVE™ COLLECTION



SPECIFICATION INFORMATION

PATTERN	SOLSTICE - REVE™ COLLECTION
Application	Upholstery
Content	100% Hyphyn™ Biodegradable Vinyl
Repeat	40.5" Vertical, 27" Horizontal
Width	54"
Weight	31 oz. / Linear Yard
Finish/Backing	Resilience® / 100% Hyphyn™ Biodegradable Polyester
Cleaning Code*	WS, Bleach Cleanable
Warranty	Standard (3yr)
Performance¹	    
Flammability	NFPA 260, TB 117-2013
Abrasion	250,000 Double Rubs (Wyzenbeek)

Hyphyn™ Vinyl biodegrades over 90% within 24 months in landfill conditions.
No detectable chemicals of concern in post-degradation soil.
No negative effect on post-degradation soil. Low VOC.
Does not pose any exposure risks associated with the chemicals in Prop 65.
Does not contain Flame Retardant Chemicals.
Lead/Heavy Metal Free. Phthalate Free/PFAS Free.



Colors may vary slightly between dye lots. This card may show discontinued colorways.
For current color availability, please refer to pallastextiles.com or call 1-800-472-5527.
*For specific cleaning or disinfecting instructions, visit pallastextiles.com/cleaning.
**Multiple factors affect fabric durability and appearance retention, including end-user application and proper maintenance. Wyzenbeek results above 100,000 double rubs have not been shown to be a reliable indicator of increased fabric lifespan.

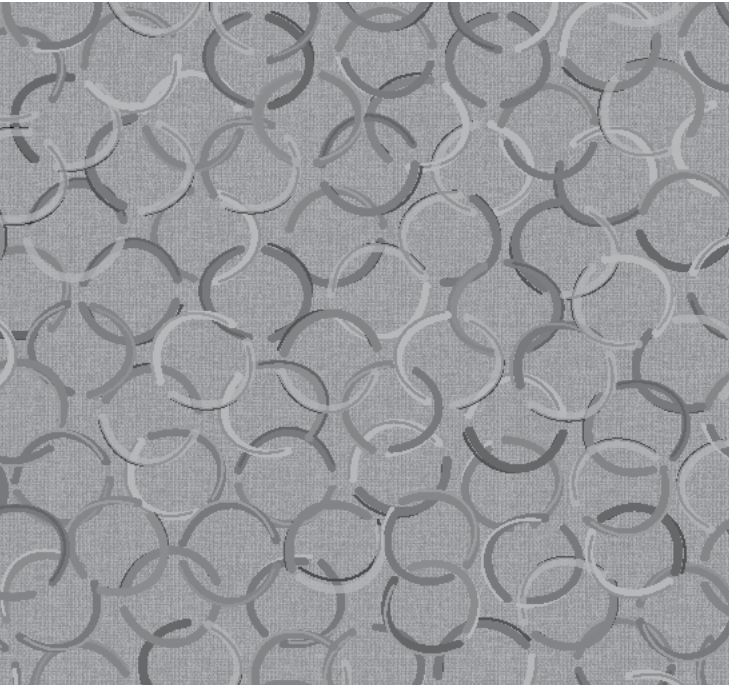


Photo for overall pattern effect only.



PALLAS

Pallas Textiles • 1330 Bellevue Street • Green Bay, WI 54302 • 1-800-472-5527 • www.pallastextiles.com
Pallas is a registered trademark of Krueger International, Inc.® 2025 KI All Rights Reserved. Litho in USA. PT-FF-000467
¹ACT® Registered Certification Marks

