



 caesarstone®

# Technical Data Manual



**Aerial View of Caesarstone Factory**

Kibbutz Sdot Yam, Israel

Adjacent to the ancient Roman city of Caesarea

# Product Description

5111 Statuario Nuvo  
DLUX Design & Co



Caesarstone is the original engineered [quartz surface](#). Use it as an attractive, versatile and distinctive finish for residential, commercial and institutional buildings. Caesarstone quartz is tough enough to withstand wear and tear in multiple surface applications and beautiful enough for every design scheme.

Caesarstone quartz outperforms natural stone. It has more flexural strength and impact resistance than granite while also outdoing marble. Each slab is unique with newer collections designed to look like natural stone.

Due to Caesarstone quartz's superior strength and durability, you may be able to use thinner materials to save weight, or use larger pieces to reduce the number of joints. Regardless, you save money with a simplified fabrication and installation process.

Furthermore, Caesarstone quartz is [easy to care](#) for. Its quartz aggregate makes it harder and more scratch resistant than either granite or marble, and its high-quality polymer binders make it non-porous and highly resistant to stains.

## Use Caesarstone quartz for:

- Countertops and backsplashes
- Shower and tub surrounds
- Lavatory and sinks
- Interior wall cladding
- Table and desktops
- Wainscots and wall bases
- Toilet compartment partitions
- Elevator cab walls
- Service counters

Refer to [Warranty Guidelines](#). Creative applications not covered.



4033 Rugged Concrete  
Poké Me

Caesarstone quartz maintains its appearance without sealants or waxes and meets the stringent sanitation requirements of restaurants, hospitals and schools.

**Composition:** Caesarstone surfaces contain up to 90% crushed quartz (silicon dioxide – SiO<sub>2</sub>), one of nature’s hardest minerals. Quartz is combined with high-quality polyester resins and pigments, and then compacted under intense vibration, vacuum and pressure into dense, non-porous slabs. The slabs are gauged to precise thickness and polished to a lasting shine or attractive textured finish. After passing inspection, the back of each Caesarstone slab is imprinted with a zigzag trademark to simplify jobsite identification.

**Finishes:** Caesarstone offers five distinctive surface finishes that offer added character beyond the color. Caesarstone can be finished on two faces by special order, requiring a minimum order quantity and additional lead-time.

**Colors and Styles:** Caesarstone offers a wide spectrum of design options in the quartz surface industry. Our styles range from fine-grained, salt-and-pepper patterns to coarse-grained color blends with a variegated visual texture. The marble-inspired surface designs highlight the exquisite appearance of natural stone through bold colors and intricate veins. See our website or contact Caesarstone for color brochures and samples.

**Intense Heat:** Caesarstone quartz tolerates brief exposures to moderately hot temperatures. **Trivets or hot pads should always be used.**

### Caesarstone Quartz Performance

- Beautiful and durable
- Strong, yet flexible
- Scratch resistant
- Highly stain resistant
- Resistant to many chemicals, acids and solvents
- Non-porous and prevents mold, mildew and bacteria
- Heat resistant withstands very brief exposure to moderate heat
- Impact resistant

# Slab Dimensions

## Standard Size

120" (305cm) x 56 1/2" (144cm)

Width tolerance +/-5mm; length tolerance +/-10mm

## Standard Size Weight

1.3cm\* 280-315 lbs (127-143kg)

2cm 417-463 lbs (189-210kg)

3cm 639-675 lbs (290-306kg)

## Jumbo Slab\* Size

131 1/2" (334cm) x 64 1/2" (164cm)

## Jumbo Slab\* Weight

2cm 520-575 lbs (236-261kg)

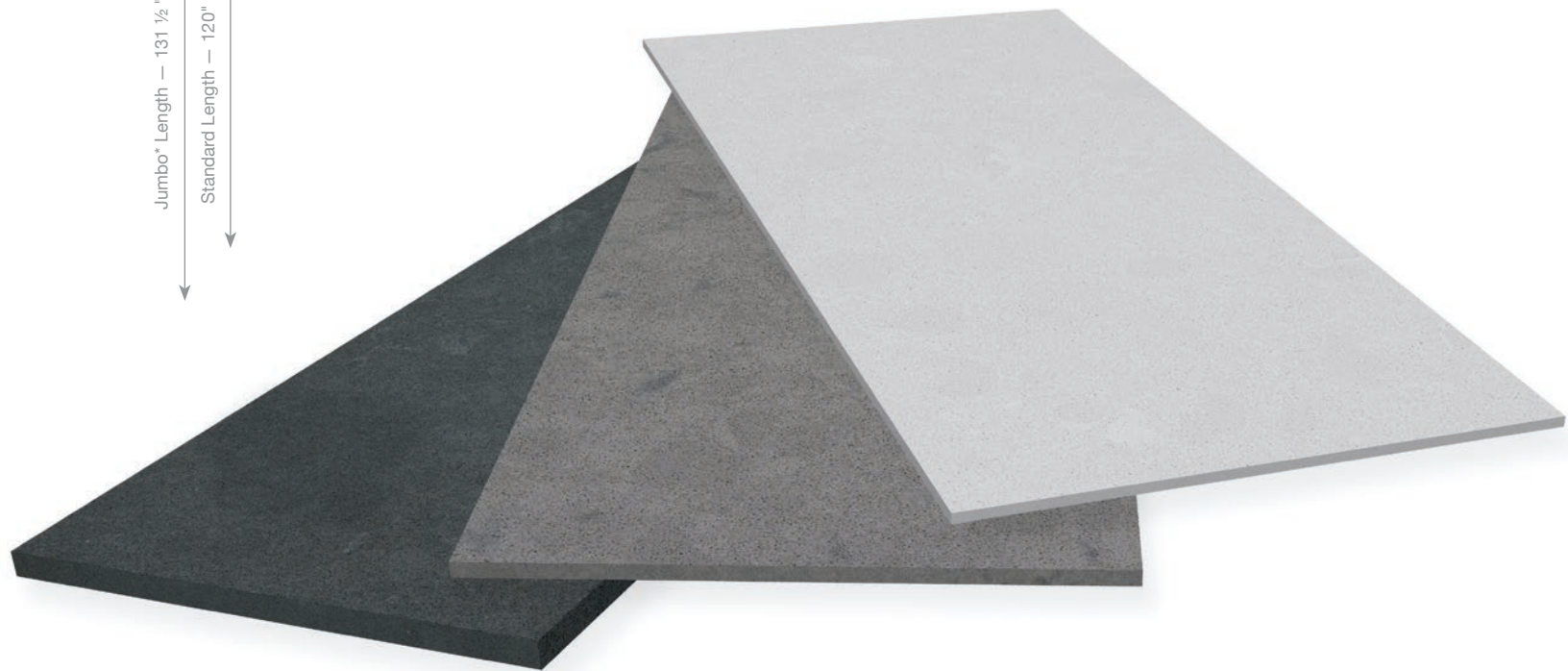
3cm 798-842 lbs (362-382kg)

## THICKNESS:

1.3cm

2cm

3cm



\*These dimensions are used for storage and transportation purposes only .  
Actual usable slab surface is slightly less per side.



**1141 Pure White**  
Fonté Coffee Roaster Café  
Seattle, WA

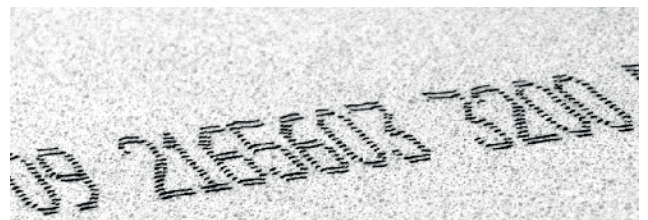
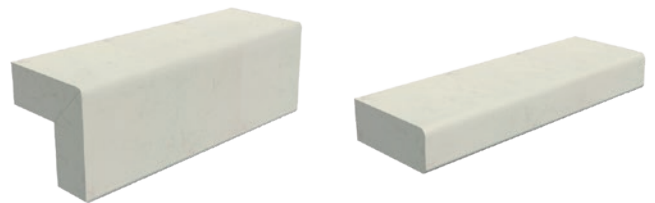
**Edge Profiles:** The unique edge properties and durability of Caesarstone quartz surfaces allow for a wide range of edge profile designs, including a standard edge or laminated or mitered edge that creates the appearance of a thicker slab. All edge details should have **minimum 1/8" radius** on any profile, for both top and bottom edges.

**For high-traffic areas and sink cutouts, a 1/4" minimum radius is suggested.**

Caesarstone quartz surfaces and countertops can be fabricated with a variety of different edge options such as: double radius, bevel, double bullnose, miter edge, radius, ogee bullnose and triple ogee.

**Caesarstone Slab ID:** The underside of every Caesarstone slab is uniquely stamped with identification information establishing authenticity. Beware of imitation slabs.

**Miter Edge**  
Minimum Radius: 1/8"



# Finishes



5810 Black Tempal

**Polished** is an elegant and highly reflective finish that is smooth to the touch. Caesarstone's Polished finish emphasizes color and sets the tone for sophisticated spaces with its stunning luster. The sleek surface helps a room appear more spacious, adds luxury to interiors and boasts remarkable style and endurance. Our standard finish is designed for life, requiring minimal care and maintenance. Polished surfaces have a silk gloss finish with a ratio of 28-55% at 50°.

**Concrete\*** is a matte, textured finish which introduces an industrial aged feel to the surface. This unique finish never requires sealing and is designed to acquire a natural patina over time, which adds to the character of the surface, yet remains easy to clean and maintain. Concrete surfaces have a matte finish with a gloss ratio of 4-8% at 50°.

**Rough\*** looks like a hand-poured concrete surface and blends well with neutral palettes that soften its raw industrial edge. Its low reflective matte surface finish is more susceptible to showing everyday marks and spills, meaning more frequent cleaning may be required. Rough Concrete surfaces have a matte finish with a gloss ratio of 0-4% at 50°.

**Honed\*** is a matte finish with the look and feel of natural stone, requiring more maintenance yet no sealants. Caesarstone's Honed finish emits an organic appearance with its low light reflection, while retaining a stylish, authentic quality with high design appeal. Smooth to the touch, yet soft on the eye, our Honed finish is in perfect harmony with both classic and modern design approaches. Due to the nature of the surface design, additional care and maintenance will be required. Honed surfaces have a matte finish with a gloss ratio of 4-8% at 50°.

**Natural\*** has a slightly textured finish that conjures up the emotional caress of stone, adding warmth to the grain so it conveys a uniquely sensorial touch. Its satin sheen gently reflects light, captivating the viewer and enhancing the depth of color, especially on darker shades. Due to the nature of the surface design, additional care and maintenance will be required. Natural finishes have a slightly textured satin sheen finish with a gloss ratio of 6-12% at 50°.

\*Available for select colors



# Caesarstone's Outdoor Collection

For the first time, Caesarstone takes the luxury and durability of quartz outside. This groundbreaking Outdoor Collection provides the convenience of stain-resistant, easy-to-clean surfaces while innovating a highly durable material proven to weather all the elements – come rain, snow or shine. Innovated and tested to withstand UV rays and the most extreme environmental conditions, the new Outdoor Collection provides an answer for consumers' desire to cook, dine and entertain comfortably in an outdoor kitchen. Barbecue counters, sinks and backsplashes are just the beginning; other uses range from patio dining tables to poolside bar tops.

Please review our Technical Guide for specifications on fabricating and installing Caesarstone's Outdoor Collection.



UV  
Resistance



Weather  
Resistance



Stain  
resistant



Scratch  
resistant



No Special  
Maintenance  
Required



Durable





# Performance

Caesarstone's Outdoor Collection was designed to have excellent performance. After thorough testing both in the lab and in the field, we have proven that the Outdoor Collection surfaces are highly resistant to all weather and environmental conditions, everyday wear and tear, and have exceptional mechanical and physical properties. The appearance and physical properties of Caesarstone's Outdoor Collection surfaces remain similar after long term exposure to the sun and seasonal changes.

## Caesarstone's Outdoor Collection vs. Alternate Outdoor Materials

|                                    |  | Caesarstone's Outdoor Collection | Ceramic         | Granite          | Concrete | Stainless Steel |
|------------------------------------|--|----------------------------------|-----------------|------------------|----------|-----------------|
| Mechanical and physical properties | Flexural Strength<br>Shows the mechanical strength of the product (e.g., how much weight it can endure)          | +++                              | ++ <sup>1</sup> | ++ <sup>1</sup>  | +        | N.A             |
|                                    | Impact Resistance<br>Shows how tough the slab is and reflects its durability against impact from falling objects | +++                              | + <sup>1</sup>  | ++ <sup>1</sup>  | ++       | N.A             |
| Aspects of use                     | Scratch Resistance   | +++                              | +++             | ++               | +        | +               |
|                                    | Stain Resistance   | +++                              | +++             | +++ <sup>2</sup> | +        | +               |
| Weathering resistance              | Water Absorbance<br>Simulates constant exposure to water, which is similar to a situation of continuous rain     | +++                              | +++             | ++               | +        | N.A             |
|                                    | Environmental Heat Resistance<br>Simulates a continuous exposure to high environmental temperatures              | +++                              | +++             | +++              | +++      | +++             |
|                                    | Outdoor Collection UV Resistance   | +++                              | +++             | ++               | +++      | +++             |
|                                    | Freeze Resistance  | +++                              | +++             | ++               | ++       | +++             |

<sup>1</sup> The samples were strengthened with a supportive net on the opposite side. We assume that the results would have been inferior, had the net not been used.

<sup>2</sup> Granite is covered with a protective sealer that requires resealing every few months. The sealer improves stain resistance.

+++ Good    ++ Fair    + Poor

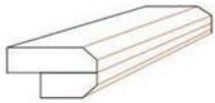
# Edge Details



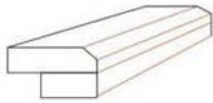
2003 Concrete

## Edge Profiles

The edge profile of your surface can be custom-designed by a stonemason in a variety of thicknesses, from 20mm to 40mm or more to optimize your design.



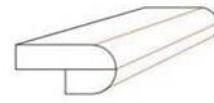
Bevel



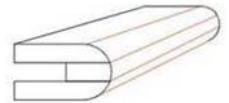
Bevel Square



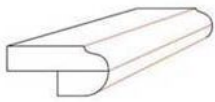
Full Bullnose



Double Bullnose



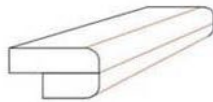
Triple Laminated Bullnose



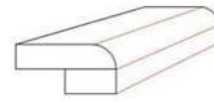
Ogee



**Miter**  
Recommended for Supernatural design



**Double Radius**  
laminated 1/4" (7mm) round top and bottom



**Pencil**  
1/4" (7mm) recommended



**Eased**  
1/8" (3mm)

Please consult with your local fabricator as not all edges are available in all areas and other options may be available in your region.

# Maintenance



5131 Calacatta Nuvo

**Polished Finishes:** Its hard, nonporous, Polished surface makes Caesarstone quartz simple to clean. In most cases, soap and water or a mild detergent is all that is required to maintain its luster. For optimal performance of your Caesarstone surface, we recommend using Soft Scrub® Liquid Gel with Bleach on a soft damp cloth. Wipe the surface and rinse thoroughly to remove residue.

**Honed, Concrete, Rough and Natural Finishes:** Please understand that Honed, Natural, Concrete and Rough finishes will require more daily maintenance than our Polished finishes. Since there is more exposed surface area with these finishes, metal marks, fingerprints and other signs of daily living will show on these materials. Most of these marks can be easily removed with little effort and cleaning products, such as Soft Scrub® Liquid Gel with Bleach. Squeeze a small amount on a soft damp cloth and wipe the surface. Then rinse thoroughly with clean water to remove residue.

## Find Out More

For further information about Caesarstone's quartz surfaces, please visit our website at [www.caesarstoneus.com](http://www.caesarstoneus.com)

# Maintenance



## What is Patina?

Patina is a thin layer that variously forms on the surface of stone over six months of use. Patinas can provide a protective covering to materials that would otherwise be damaged by corrosion or weathering. They may also be aesthetically pleasing. Caesarstone surfaces are designed to acquire a natural patina which adds to the character of the surface, yet remains easy to clean and maintain. It is not a blemish or stain.

## Guidelines

- Counters are not sold with patina. Natural patina can take up to six months to form using regular mild cleaners, soap and water, windex, etc.
- Patina forms on all quartz products unless bleach based cleaner is used regularly
- All colors become slightly darker and shinier
- **No sealant of any kind** should ever be used
- Sealant leaves a topical film that makes cleaning even harder over time
- Certain cleaners may expedite accrual of patina



5111 Statuario Nuvo  
EOS Rejuvenation  
Beverly Hills, CA

Caesarstone surfaces are recommended for healthcare facilities.

**Chemicals:** Avoid contact with products containing trichloroethane or methylene chloride (such as paint removers or strippers), abrasives, hydrofluoric acid, liquid bluing, gentian violet and aggressive cleaning compounds like oven or grill cleaners.

**Acids:** Caesarstone quartz is not affected by solutions of common acids including hydrochloric, muriatic and sulfuric acids. In concentrated solutions, after exposures of 24 hours, some acids such as nitric acid will discolor the surface though they will not compromise the strength of the material. Hydrofluoric acid spills should be cleaned immediately, because it will react with quartz. In the event of accidental exposure to these products, thoroughly rinse the surface with clean water as soon as possible. Take care to protect skin and eyes.

**Alkalines:** Sodium hydroxide and potassium hydroxide in 10% or higher concentrations will etch Caesarstone surfaces; spills should be cleaned immediately. In household concentrations, such as those found in home drain cleaners, sodium and potassium hydroxide have no effect on the surface though we recommend cleaning all spills as soon as possible.

**Staining Agents:** Caesarstone quartz resists common laboratory staining agents. It is not permanently stained by povidone-iodine (betadine), potassium permanganate or tincture of iodine. Residual stains of betadine or iodine on light-colored surfaces clean off with chlorine bleach. Black and dark colors of Caesarstone quartz show no stain from these agents. Some colors of Caesarstone quartz can be stained by prolonged contact with solutions of gentian violet, blue ink and some lipsticks.

**Solvents:** Caesarstone quartz resists a wide range of commercial and industrial solvents. Household cleaners and industrial strength solutions of methyl ethyl ketone (MEK) have no effect on Caesarstone surfaces. Solvents that can be safely used in pure concentrations on the surface include:

- Denaturated Alcohol
- Methyl Hydrate
- Methylene Chloride
- Lacquer Thinner
- Isopropyl Alcohol

## Environment, Standards & Certificates

At Caesarstone, minimizing our impact on the environment is a top managerial priority, involving all our employees and departments to assure our sustainability leadership.

We aim to create durable, low-maintenance products that support healthier environments and better use of natural resources:

**Low Maintenance** Our surfaces require minimal maintenance and significantly reduce the need for sealants, cleaning materials and detergents.

**High Performance and Durability** Our quartz surfaces are long-lasting and durable, delivering both improved life cycle costs and additional investment value.

**Low-emitting Products** Caesarstone quartz surfaces meet stringent product emissions standards and have very little impact on indoor air quality. All Caesarstone quartz products are independently certified by the GREENGUARD Certification, which is part of UL Environment, a business unit of UL (Underwriters Laboratories), as low-emitting surfaces.

**Caesarstone works with the leading sustainability organizations in the green building sector as part of its sustainability leadership. Our certifications for our manufacturing sites and products support our customers' needs for green and healthy building products and contribute to green building projects.**

**The CE** marking indicates conformity with health, safety and environmental protection standards for products sold within the European Economic Area. By affixing the CE marking, Caesarstone declares that Caesarstone quartz surfaces meet all the legal requirements for CE marking.

**ISO 14001** is the international standard for establishing an environmental management system to guide working towards: meeting environmental goals; monitoring compliance activities; investing in tools for enhancing a quality environment; employee and supplier training; health and safety procedures; and establishing efficient production processes. All Caesarstone's production plants have a certified environmental management system in accordance with ISO 14001.



5220 Dreamy Marfil

**OHSAS 18001** and **ISO 45001** are international occupational health and safety management standards designed to support organizations in assessing workplace hazards and implementing preventative measures as part of day-to-day operations. All Caesarstone's production plants have a certified occupational health and safety management system in accordance with OHSAS 18001 or ISO 45001.

**ISO 9001** is the international standard that specifies requirements for a quality management system. Compliance demonstrates the ability to consistently provide products and services that meet customer and regulatory requirements. All Caesarstone's production plants have a certified quality management system in accordance with ISO 9001.

All Caesarstone quartz surfaces comply with **GREENGUARD** certification, which verifies that Caesarstone products meet the most stringent indoor air emission standards.

All Caesarstone quartz surfaces comply with the **GREENGUARD GOLD** standard (formerly known as GREENGUARD Children & Schools Certification), which evaluates the sensitive nature of school populations combined with the unique building characteristics found in schools, and presents the most rigorous product emissions criteria to date.

The **Health Product Declaration (HPD)® Open Standard\*** necessitates full disclosure of the potential chemicals of concern in products by comparing product ingredients to a set of priority "hazard" lists based on the GreenScreen for Safer Chemicals and additional lists from other government agencies. Caesarstone is compliant with the HPD v2.2 standard.

Caesarstone's **Red List Declaration** confirms that - to the best of our knowledge - Caesarstone quartz surfaces do not contain any of the hazardous materials that appear on the International Living Future Institute's Red List (<https://living-future.org/declare/declare-about/red-list/>).

As a member of the **United States Green Building Council (USGBC)**, we are a natural partner for green building projects worldwide. For more information, visit [new.usgbc.org](http://new.usgbc.org)

Developed by the **USGBC, LEED** (Leadership in Energy and Environmental Design) is an American accredited rating system for the design, construction and operation of high-performance green buildings. Caesarstone's products can contribute to LEED v3 and LEED v4 projects.



5031 Statuario Maximus

Caesarstone's recycled models are **Scientific Certification Systems (SCS)** certified for recycled content. SCS is a global leader in independent certification and verification of environmental and sustainable stewardship. Some of our models are made from pre-consumer, recycled raw materials such as mirror and glass or high-quality, reclaimed post-production waste from the fabrication process.

Caesarstone quartz surfaces are compliant with the International Health and Safety Foundation sanitary standard **NSF51**, ensuring that our working surfaces are safe for use in all food environments. Our non-porous surfaces inhibit the growth of mildew and bacteria, thus creating a hygienic surface.

Caesarstone products abide by the two leading **European Food Contact Materials** regulations: Regulation (EC) No 1935/2004 and Regulation (EC) No 2023/ 2006 on Good Manufacturing Practices.

Caesarstone products are found in the **Mindful MATERIALS** Library at [www.mindfulmaterials.com](http://www.mindfulmaterials.com). Mindful MATERIALS is a user-friendly platform that enables the building industry to obtain information concerning statements and certifications regarding quality and environmental aspects of Caesarstone.

Caesarstone surfaces are **Kosher** due to their low porosity.



\* The Health Product Declaration ® logo is a registered trademark of HPD Collaborative.

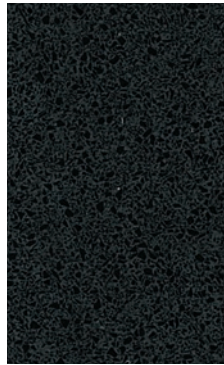




5141 Frosty Carrina



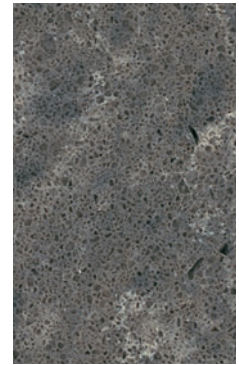
## SCS Certified Products



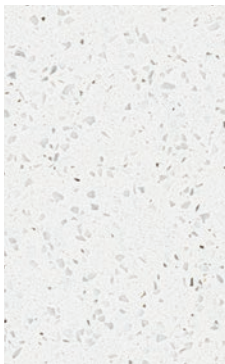
**3100 Jet Black**  
42% Pre-consumer Recycled Content



**5133 Symphony Grey**  
3% Pre-consumer Recycled Content



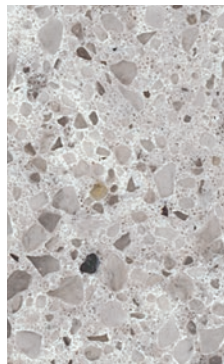
**6003 Coastal Grey**  
4% Pre-consumer Recycled Content



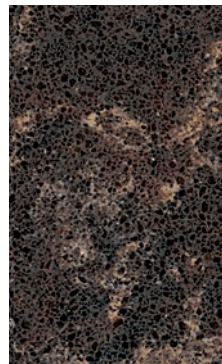
**6011 Intense White**  
16% Pre-consumer Recycled Content



**6131 Bianco Drift**  
2% Pre-consumer Recycled Content



**6270 Atlantic Salt**  
4% Pre-consumer Recycled Content



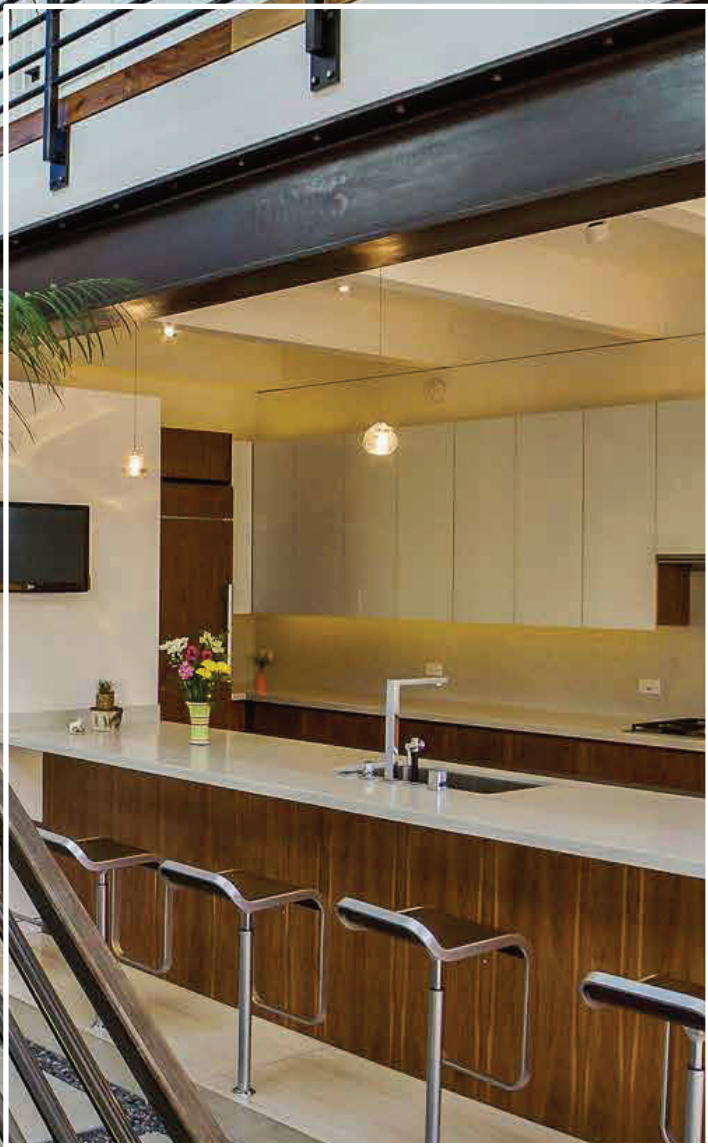
**6338 Woodlands**  
3% Pre-consumer Recycled Content



**6611 Himalayan Moon**  
3% Pre-consumer Recycled Content

**After a rigorous assessment, the Scientific Certification Systems (SCS) has approved Caesarstone's Environment First collection as SCS Recycled Content Certified.**

As a global leader in independent certification and verification of environmental and sustainable stewardship, SCS has developed internationally recognized standards and certification programs in pursuit of the highest level of environmental performance and social accountability.



**5000 London Grey**  
Amaroso Place  
Venice, CA



**1141 Pure White**  
BRW Architects  
Dallas, TX

# Leed v4



LEED Certification is a globally-recognized symbol of achievement for high-performing, green buildings. Developed by the U.S. Green Building Council, LEED (Leadership in Energy and Environmental Design) provides a framework to create healthier, highly efficient and cost-saving green buildings.

Caesarstone Quartz Surfaces can contribute to a project's pursuit of LEED Certification across the following credits for **LEED v4 BD+C and ID+C**:

## Material and Resources (MR)

### Credit

**MR Credit: Building Product Disclosure and Optimization – Sourcing of Raw Materials**  
1 Point

**Intent of Credit:** To encourage the use of products and materials for which life cycle information is available and that have environmentally, economically, and socially preferable life cycle impacts. To reward project teams for selecting products verified to have been extracted or sourced in a responsible manner.

#### Option 1 Leadership Extraction Practices

**Requirements:** Use products that meet at least one of the responsible extraction criteria below for at least 25%, by cost, of the total value of permanently installed building products in the project.

**Recycled content:** Products meeting recycled content criteria are valued at 100% of their cost for the purposes of credit achievement calculation.

Products sourced within 100 miles (160 km) of the project site are valued at 200% of their base contributing cost.

### How Caesarstone Contributes

The following Caesarstone Quartz Surfaces have received **third-party certification** from SCS Global Services for Pre-Consumer Recycled Content. Thus, these products can contribute to the LEED calculation for total recycled content used in a project.

| Color               | Min. Recycled Content |
|---------------------|-----------------------|
| 3100 Jet Black      | 42% pre-consumer      |
| 5133 Symphony Grey  | 3% pre-consumer       |
| 6003 Coastal Grey   | 4% pre-consumer       |
| 6011 Intense White  | 16% pre-consumer      |
| 6131 Bianco Drift   | 2% pre-consumer       |
| 6270 Atlantic Salt  | 4% pre-consumer       |
| 6338 Woodlands      | 2% pre-consumer       |
| 6611 Himalayan Moon | 3% pre-consumer       |

Caesarstone products are manufactured at our three factories located at **Sdot Yam, Israel**; the **Barlev Industrial Zone, Israel**; and **Richmond Hill, GA, USA**. Not all raw materials used in these products have been extracted from within 100 miles of these factories. Please contact the manufacturer if more information is required.



## Material and Resources (MR)

### Credit

#### MR Credit: Building Product Disclosure and Optimization – Material Ingredients

1-2 Points

**Intent of Credit:** To encourage the use of products and materials for which life-cycle information is available and that have environmentally, economically, and socially preferable life-cycle impacts. To reward project teams for selecting products for which the chemical ingredients in the product are inventoried using an accepted methodology and for selecting products verified to minimize the use and generation of harmful substances.

#### Option 1 Material Ingredient Reporting

**Requirements:** Use at least 20 different permanently installed products from at least five different manufacturers that use any of the approved programs to demonstrate the chemical inventory of the product to at least 0.1% (1000 ppm), including:

Health Product Declaration. The end use product has a published, complete Health Product Declaration with full disclosure of known hazards in compliance with the Health Product Declaration Open Standard.

### How Caesarstone Contributes

Caesarstone has a published and complete Health Product Declaration (HPD) that covers all variations of Caesarstone Quartz Surfaces.

The screenshot shows the 'Caesarstone Surfaces Health Product Declaration v2.1.1' document. It includes a classification of 12,36,61,19 Furnishings: Quartz Agglomerated Countertops and a product description stating that Caesarstone Ltd. manufactures premium quartz surfaces. The document is divided into sections, with 'Section 1: Summary' highlighted. Below this, there is a 'CONTENT INVENTORY' table with columns for 'Inventory Reporting Format', 'Threshold level', 'Residuals/Impurities', and 'Screened'. The table lists various chemical substances and their screening status. For example, 'Caesarstone Surfaces Quartz Agglomerated Countertops' is listed with a threshold level of 1000 ppm and is screened. The document also includes a 'VOLATILE ORGANIC COMPOUND (VOC) CONTENT' section and a 'CERTIFICATIONS AND COMPLIANCE' section.

This HPD includes full disclosure of known hazards at an inventory threshold of 1000 ppm, and is available on the **HPD Public Repository**.



## Material and Resources (MR)

---

### Credit

### How Caesarstone Contributes

---

#### **MR Credit: Construction and Demolition Waste Management** 1-2 Points

**Intent of Credit:** To reduce construction and demolition waste disposed of in landfills and incineration facilities by recovering, reusing and recycling materials.

**Requirements:** Recycle and/or salvage nonhazardous construction and demolition materials. Achieve one of the options listed below:

#### **Option 1** **Diversion**

**Path 1:** Divert at least 50% of the total construction and demolition material; diverted materials must include at least two material streams (1 point).

OR

**Path 2:** Divert at least 75% of the total construction and demolition material; diverted materials must include at least four material streams (2 points).

OR

#### **Option 2** **Reduction of total waste material** 2 points

Do not generate more than 2.5 pounds of construction waste per square foot (12.2 kilograms of waste per square meter) of the building's floor area.

Caesarstone Surfaces can be cut to the exact specifications of our customers, meaning that there is the potential for very little to no excess waste to be introduced to the project site from the product itself.

Prefabrication, modular construction or incorporating standard material lengths or sizes into the project's design are all strategies that can help reduce project waste, and thus help contribute to this credit.

Caesarstone Surfaces are 100% recyclable into concrete or terrazzo, further reducing waste required to be disposed of in landfills.



Caesarstone is proud to use environmentally friendly packaging for its products, meaning that packaging materials are easily recyclable in most areas.



## Indoor Environmental Quality (EQ)

### Credit

#### EQ Credit: Low-Emitting Materials

1-3 Points

**Intent of Credit:** To reduce concentrations of chemical contaminants that can damage air quality, human health, productivity, and the environment.

#### Option 1 Product Category Calculations

#### Option 2 Budget Calculation Method

**Requirements:** This credit includes requirements for product manufacturing as well as project teams. It covers volatile organic compound (VOC) emissions in the indoor air and the VOC content of materials, as well as the testing methods by which indoor VOC emissions are determined. Different materials must meet different requirements to be considered compliant for this credit.

General emissions evaluation. Building products must be tested and determined compliant in accordance with California Department of Public Health (CDPH) Standard Method v1.1–2010, using the applicable exposure scenario.

### How Caesarstone Contributes

Caesarstone Quartz Surfaces have received **GREENGUARD Gold Certification** from UL Environment.



UL 2818 - 2013 Gold Standard for Chemical Emissions for Building Materials, Finishes and Furnishings.

Building products and interior finishes are determined compliant in accordance with California Department of Public Health (CDPH) Standard Method V1.2-2017 using an Office and Classroom Environment.

Product tested in accordance with UL 2821 test method to show compliance to emission limits on UL 2818. Section 7.1 and 7.2.



## Construction & Demolition Waste Management 1-2 Points

### OPTION 1 Diversion

Divert at least 50% of the total construction and demolition material and include at least three materials streams (1 pt) or 75% of the total construction and demolition material and include at least four materials streams (2 pts). Caesarstone products are 100% recyclable into concrete or terrazzo.

### OPTION 2 Reduction of Total Waste Material

Do not generate more than 2.5 pounds of construction waste per square foot (12.2 kilograms of waste per square meter) of the building's floor area. Caesarstone slabs arrive pre-cut to size at the site, eliminating generation of on-site material waste.

---

## Notes

**Option 1** of this credit rewards the project for diverting waste from the landfill. Total diversion rates of 50% or more (into at least three material streams) earn 1 point; total diversion rates of 75% or more (into at least four material streams) earns 2 points.

- The concept of individual waste streams is new to LEED v4.
- An easy way to categorize your streams is to focus on the heaviest waste or the waste that generates the most volume, making steel a viable candidate for an individual waste stream. As a best practice, a material stream should constitute at least 5% by weight or volume of total diverted materials.

**Option 2** of this credit rewards the project for reduction of total waste material (2 points). To meet the requirement, there can be no more than 2.5 pounds of construction waste per square foot of the building's floor area.

- Option 2 requires teams plan for not generating waste in the first place. To get the most benefit, this option requires teams to plan for source reduction during design and implement it during construction.
- Prefabrication, modular construction or incorporating standard material lengths or sizes into the project's design can all help reduce waste for this path to the credit.





5101 Empira Black

## Product Usage

**Manufacturing:** 94.5%-95.5% of water used during manufacturing is reclaimed using filtration and recycling systems. Regenerative thermal oxidizers remove particulate matter from the atmosphere, reducing air pollution and ensuring a safer work environment.

**Recommended Cleaning & Maintenance:** Caesarstone quartz is a very low-maintenance material. Unlike natural stone, it does not require sealing for stain resistance and its appearance can be maintained by simply using soap and water. This improves indoor air quality and removes the environmental impact of sealer and cleaning chemicals.

**Product Lifespan:** Caesarstone quartz surfaces are very durable. A limited lifetime warranty is available.

**Product Reuse:** The high strength of Caesarstone quartz surfaces make it possible to remove countertops and other installations without excessive breakage. The durability of the material makes it possible to reuse Caesarstone quartz in another location.

**Regional Fabrication:** Countertops and other Caesarstone applications can be fabricated by a fabricator located close to the building site.



Webb Foodservice Design  
UC San Diego, 64 Degrees  
San Diego, CA

## Commercial Food Service Installation

The design should provide adequate structural support for both the quartz and any other compressive loads. Additionally, the installation should be designed to minimize thermal and mechanical stress. **Slabs that are 3 cm thick must be used.**

For complete technical support and guidance for the fabrication and installation of food service counters, please see the Commercial Food Service Installation Guide.



**4350 Lagos Blue**  
CSU Fullerton  
Webb Foodservice Design

# Technical Data

| Test Performed                                     | Test Standard                         | Results  |
|--|---------------------------------------|--|
| <b>Physical Properties</b>                         |                                       |  |
| Water Absorption                                   | ATSM C97<br>EN 14617-1                | ≤0.05%<br>≤0.05%   |
| Density  | ATSM C97<br>EN 14617-1                | ≥2.1 gr/cm <sup>3</sup><br>≥2.1 gr/cm <sup>3</sup>   |
| Flexural Strength                                  | ASTM C880/C880M-15<br>EN 14617-2      | 35.5-77.5 MPa<br>43-80 MPa   |
| Dimensional Stability                              | EN 14617-12                           | Class A  |
| <b>Durability</b>                                  |                                       |  |
| Impact Resistance                                  | EN 14617-9                            | 5.0-14.4 L (J)   |
| Compressive Strength                               | ATSM C170<br>EN 14617-15              | Dry: 219-299 MPa; Wet: 203-274 MPa<br>157-243 MPa  |
| Abrasion   | ASTM C1234-93<br>EN 14617-4           | Volume of chord: V=59.2-107.2mm <sup>3</sup><br>Chord length: 22.0-22.6mm  |
| Freeze-Thaw Resistance                             | ASTM C1026<br>EN 14617-2 & EN 14167-5 | No defects after 20 freeze-thaw cycles<br>KM <sub>f25</sub> = 95.1-117.7%  |
| <b>Stain, Chemical Resistance and Cleanability</b> |                                       |  |
| Stain Resistance                                   | ANSI Z 124.6                          | Pass   |
| Chemical Resistance                                | ANSI Z 124.6<br>EN 14617-10           | Pass<br>Class C <sub>4</sub>   |
| <b>Thermal Properties</b>                          |                                       |  |
| Linear Thermal Expansion                           | ATSM 372<br>EN 14617-11               | -30°C-100°C: 3.0-5.0 x 10 <sup>-5</sup> per °C<br>13.4-26.4 (10 <sup>-5</sup> ·C <sup>-1</sup> )                 |
| Thermal Conductivity                               | EN 12664                              | 0.445-0.475 W/(m·K)  |
| Thermal Shock                                      | EN 14617-6                            | No visual defects after 20 cycles<br>Change in mass:0.04% to 0.06%<br>Change in flexural strength: -6.7% to 9.3% |
| Boiling Water Resistance                           | ANSI NEMA LD3-3.5                     | No effect  |
| High Temperature Resistance                        | ANSI NEMA LD3-2005                    | No effect  |



**5031 Statuario Maximus**  
Nichols Booth, 417 Sansome  
San Francisco, CA

# Technical Data

| Test Performed      | Test Standard   | Results  |
|---------------------|-----------------|--|
| <b>Safety</b>       |                 |  |
| Surface Burning     | ATSM E84        | Class A  |
| Fire Performance    | AS 1530.3: 1999 | Ignitability Index (0-20): 6-8<br>Spread of Flame Index (0-10): 0-3<br>Heat Developed Index (0-10): 2-3<br>Smoke Developed Index (0-10): 6-7 |
| Fire Classification | EN 13501-1      | Wall chadding: B-s1-d0<br>Flooring and stairs: B-fl-s1   |



2141 Blizzard  
Allsteel Showroom  
New York, NY

## Fabrication & Installation

Caesarstone quartz can be fabricated and installed similarly to natural stone. For full fabrication and installation guidelines, please see the Caesarstone Fabrication & Installation Guide at <https://mos.caesarstoneus.com>.

Standard industry references can also be consulted. The Marble Institute of America's **Dimension Stone Design Manual** provides reliable information for many types of interior stone construction, and the Tile Council of America's **Handbook for Ceramic Tile Installation** has recommendations for stone tile installation.



**5000 London Grey**  
Brooks Spreckman of Hutch Design  
Tender Greens, Los Angeles, CA





**4004 Raw Concrete**  
OFFICIAL DESIGN  
Houndstooth Coffee, Dallas, TX

# Wear the Right PPE

---

Protect yourself from hazardous dust  
with **Personal Protective Equipment**



Safety  
goggles



Mask



Hearing  
protection

# MASTER OF STONE

Caesarstone, the inventor of quartz surfacing, is proud to lead the safety revolution for the industry with the **MASTER OF STONE** education program. The extensive program was created for fabricators and addresses issues of health and safety in the workplace with a special emphasis on creating a space free of the dangers of hazardous respirable crystalline silica dust, the root cause of silicosis. Caesarstone, unlike many quartz surfacing companies, has no financial interest in any fabricator business, but is investing in them nonetheless with the **MASTER OF STONE** program. The program is free and available to anyone in the industry dealing with the hazardous dust risk and its implications. While Caesarstone has always had a robust training and communications program for its fabricator partners, **MASTER OF STONE** leverages many years of research and development to help educate all fabricators on health & safety, professional knowledge and more. The website is accessible to everyone and presents the complex material in a user-friendly manner.

All the information is available via the **Caesarstone MASTER OF STONE Training Center** website (<https://mos.caesarstoneus.com>), where information, guidelines, methods and collateral are provided to all who enroll. Caesarstone is determined to become part of the solution by being proactive and leading the revolution to create a safer work environment for all.



1141 Pure White  
Mercer Kitchen

## Availability

Stocked colors and textures are inventoried in convenient locations throughout North America. Caesarstone is also available internationally.

**Costs:** Caesarstone quartz is priced below the cost of many natural stones. Additional savings result from Caesarstone quartz's strength that can simplify fabrication, reduce breakage and allow for the use of thinner materials. Its durability and low maintenance requirements provide longer lifespans.

Current pricing is available by contacting us at [www.caesarstoneus.com](http://www.caesarstoneus.com) and filling out a [Contact Us](#) form.



**1141 Pure White**  
Lowe's Hotel  
New York, NY



**1141 Pure White**  
Mercedes House  
New York City



**5131 Calcatta Nuvo**  
566 Carroll Street Townhouse  
Brooklyn, NY

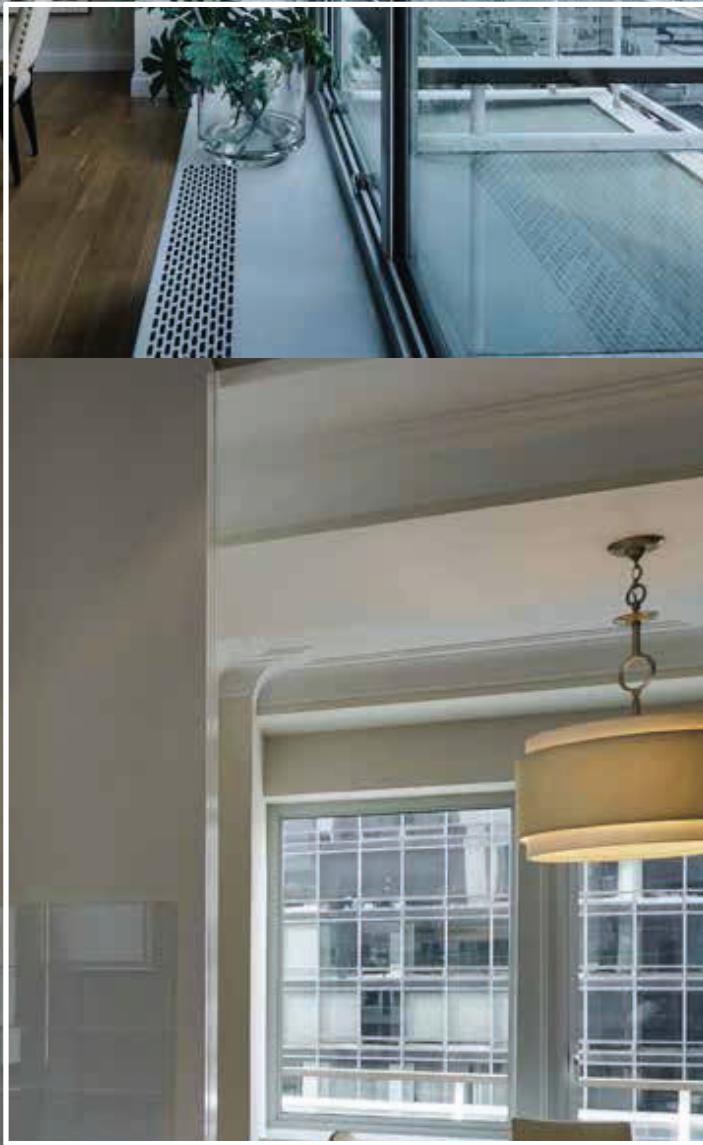


**1141 Pure White**  
Two Trees 60 Water St  
New York City





**2141 Blizzard**  
Toy Factory  
Biscuit Lofts  
New York City



**4350 Lagos Blue**  
Manhattan House  
O'CONNOR Capital Partners  
Manhattan, NY



2141 Blizzard  
Hyatt Times Square Restaurant  
New York, NY

## Lifetime Warranty

### Covered. For Life.

Lifetime Residential and Commercial Warranties are available for Caesarstone surfaces. Caesarstone warrants that its quartz surfacing material complies with Caesarstone's published product data.

Because Caesarstone does not have control over fabrication or installation, Caesarstone disclaims incidental and consequential damages and the buyer's sole remedy is repair or replacement of defective material at Caesarstone's discretion.

Please refer to our warranty guidelines for all terms, conditions and exclusions.

\* Some restrictions apply. Copies of our Lifetime Warranty are available on our website. Learn more by visiting [www.caesarstoneus.com](http://www.caesarstoneus.com) or calling 877.978.2798



**Caesarstone U.S.  
Manufacturing Facility**  
Richmond Hill, GA



## Corporate Office

1401 W Morehead St  
Charlotte, North Carolina 28208

**T** 877.978.2789

**F** 980.299.1029

info@caesarstoneus.com

[www.caesarstoneus.com](http://www.caesarstoneus.com)

Cover: 4033 Rugged Concrete

Some photos used in this brochure include creative applications that may not be covered by Caesarstone's Residential Lifetime Warranty. Please refer to your fabricator and our warranty guidelines for further details.

© Copyright Caesarstone 2021.  
Caesarstone® is a registered trademark.

