

TREVISO
AME

STONESOURCE

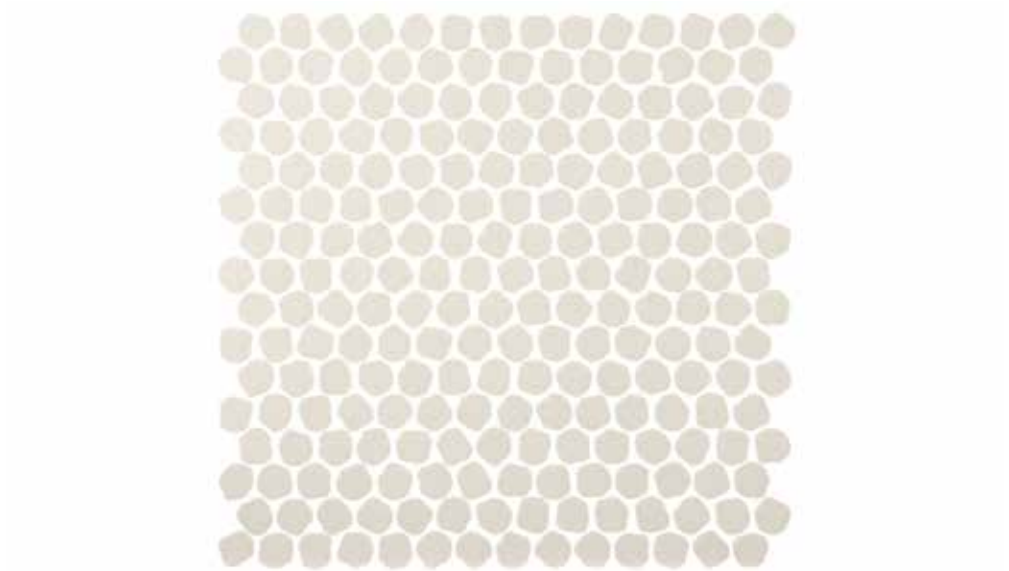


Collection

TREVISO AME

Designer

Paola Navone

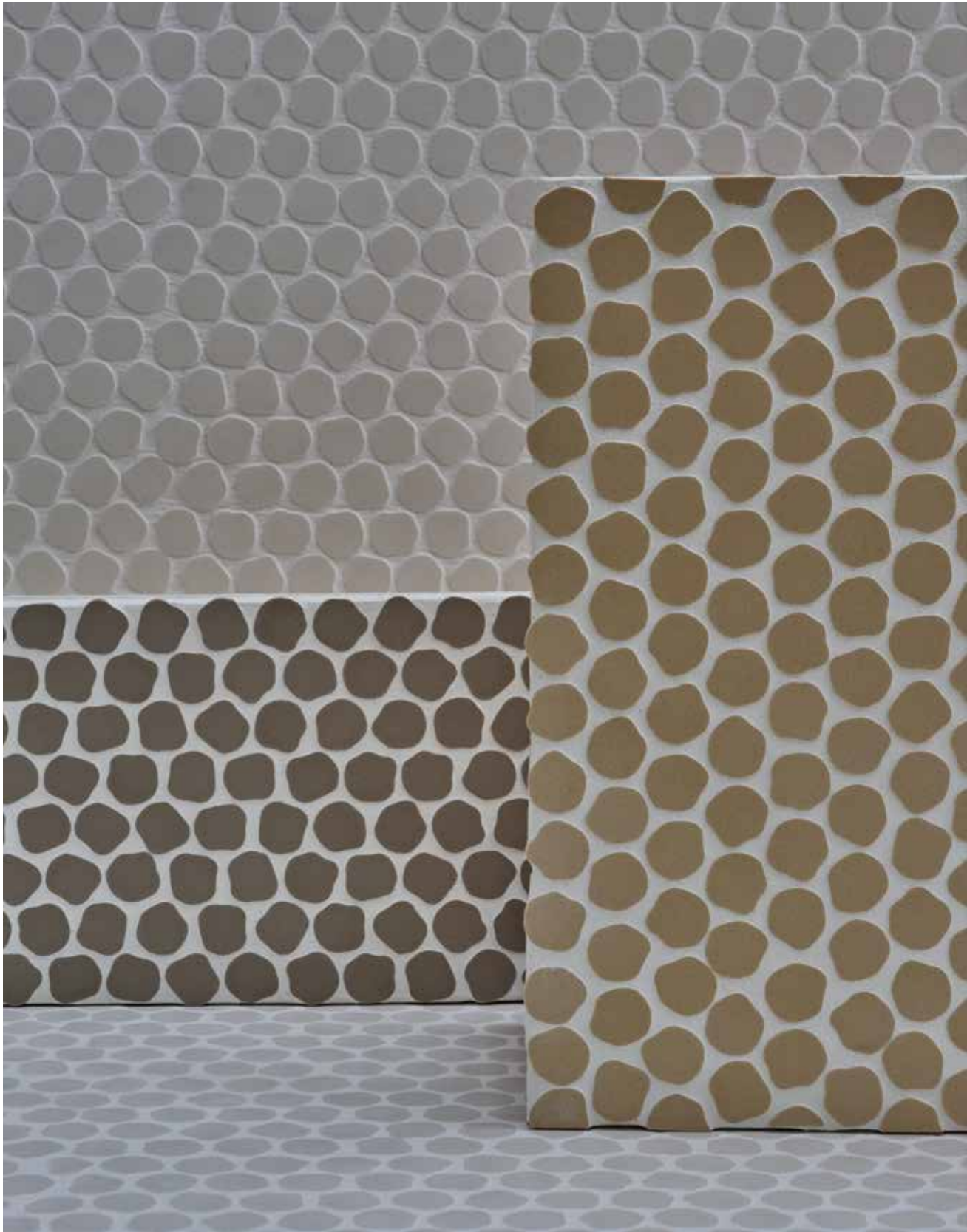


EN Irregular shapes like old-fashioned sugar can-dies in dusty pastel colours create a unique mosaic. Paola Navone has designed a delicate collection built on soft lines and a strong personality. Always stylish, it never lacks a touch of humour and whimsy. In its monochrome version it recalls the timeless poetic elegance of classic wall coverings. Its multicolour variation plays with colours and forms to create unexpected effects.









Paola Navone



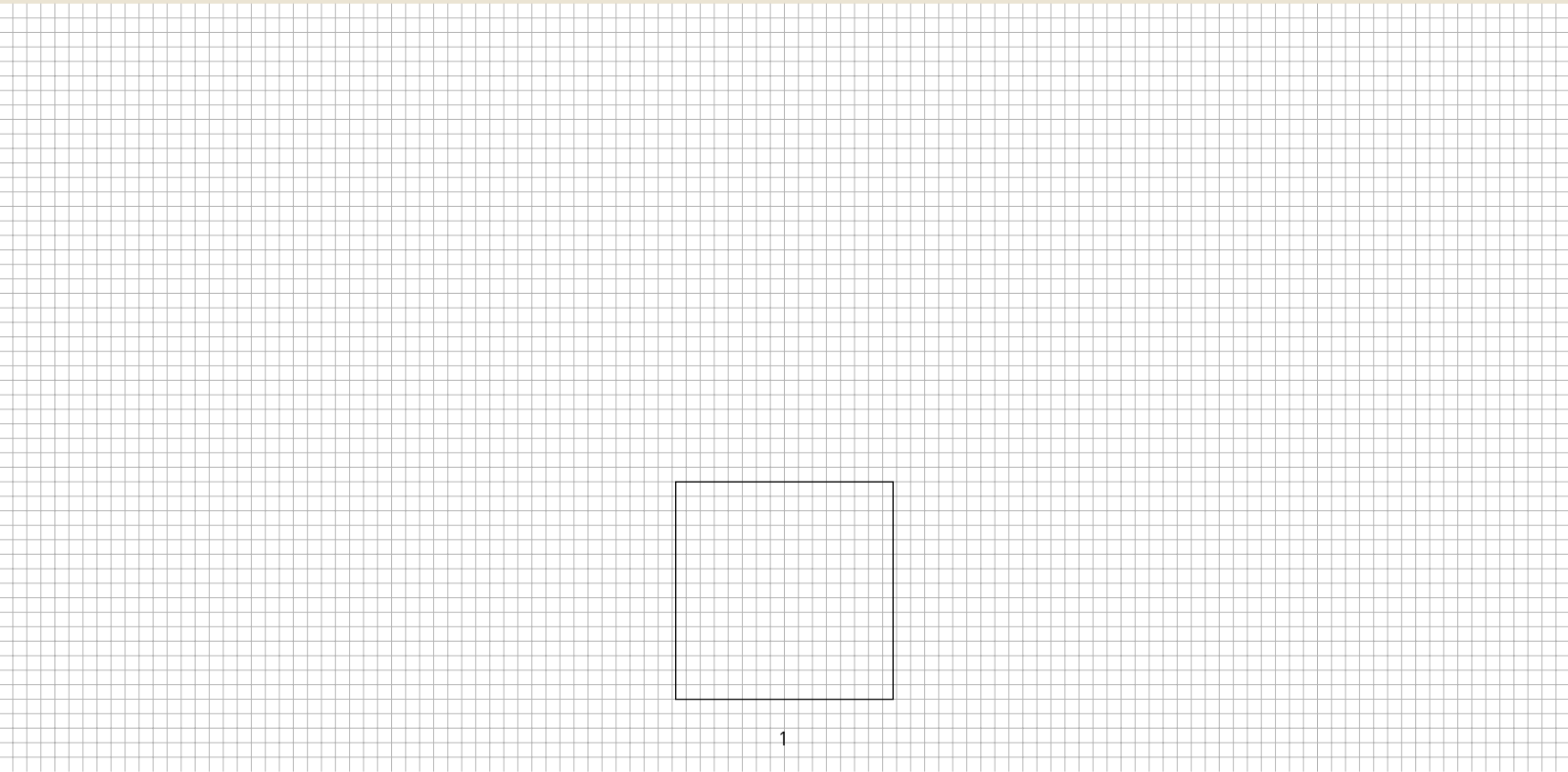
EN An open and eclectic dreamer: the flavours and colours of the global South that she knows and loves live in her mind and soul, in harmony with the taste and forms of the Western world and its rich traditions – open and in mo-tion. All of this is the basis for the unquenchable curiosity of her constant search for materials, forms and structures, in the past, present and future.

She is an architect, designer, art direc-tor and interior decorator. She has curated numerous exhibitions and shows throughout the world: in 1983 she won the International Design Award in Osaka, and in 2000 she was named Designer of the Year by the German magazine, Architektur & Wohnen. In 2011 two of her projects won the Elle Deco International Design Awards, and in 2014 she was nominated to the prestigious Design Hall of Fame by Interior Design Magazine. She has worked with some of the most famous design companies on the international scene, including Branzi, Sottsass and Mendini.



Treviso Ame

Paola Navone



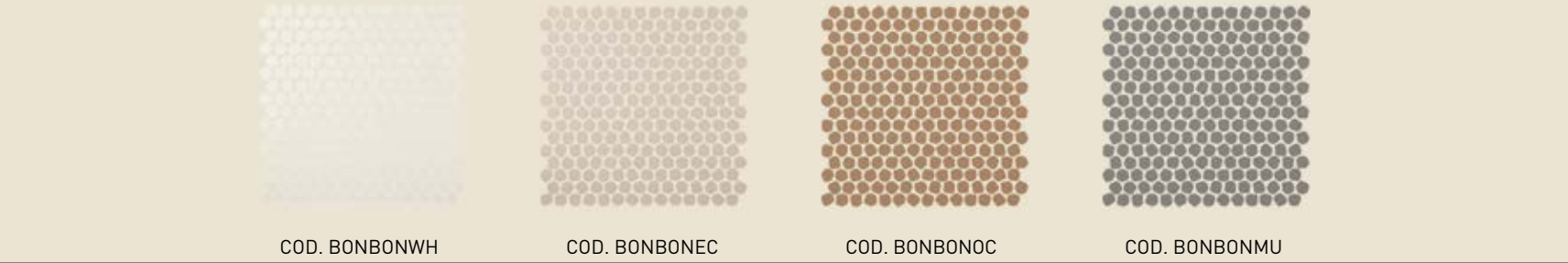
| Dimensione | cm | | inches | Size |
|-------------------|-------------|--|-----------------|---------|
| Nominale | 30,5 x 30,5 | | 12,01" x 12,01" | Nominal |
| Reale | 30,5 x 30,5 | | 12,01" x 12,01" | Real |
| Treviso Ame [1] | | | | |

| Spessore | Thickness |
|----------|-----------|
| 5 MM | |

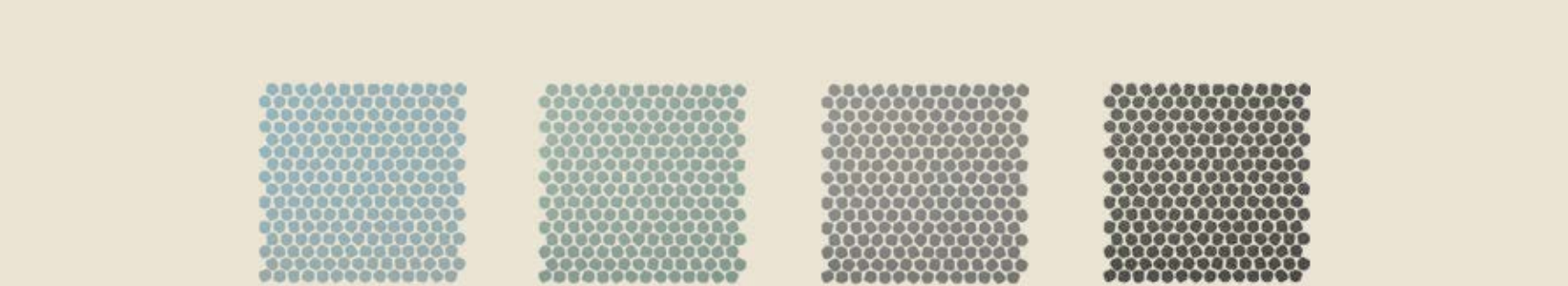
| Colori | | | | | | | | Colors |
|--|---|---|---|---|---|---|---|--------|
| A | B | C | D | E | F | G | H | |
| [A] White • [B] Ecrù • [C] Ocra • [D] Mud • [E] Skyblue • [F] Aquamarine • [G] Ardesia • [H] Smoke | | | | | | | | |

| Lavorazione | Finishing |
|--|--|
| Gres porcellanato tutta massa non smaltato UGL | Unglazed (UGL) full-body porcelain stoneware |

| Nota | Note |
|------|------|
|------|------|

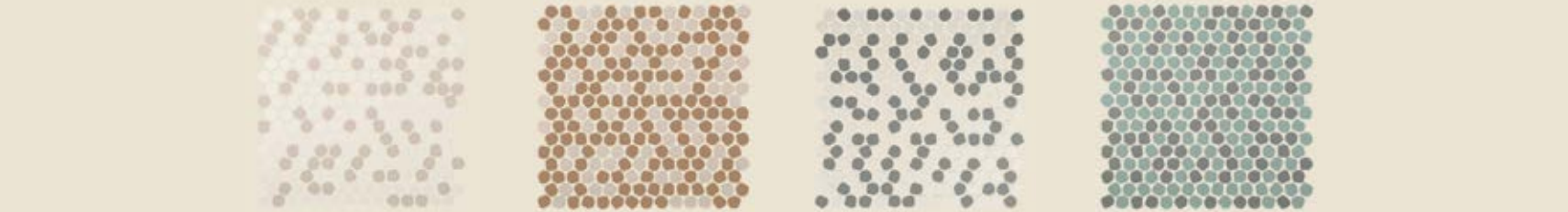


| | | | |
|---------------|---------------|---------------|---------------|
| COD. BONBONWH | COD. BONBONEC | COD. BONBONOC | COD. BONBONMU |
|---------------|---------------|---------------|---------------|



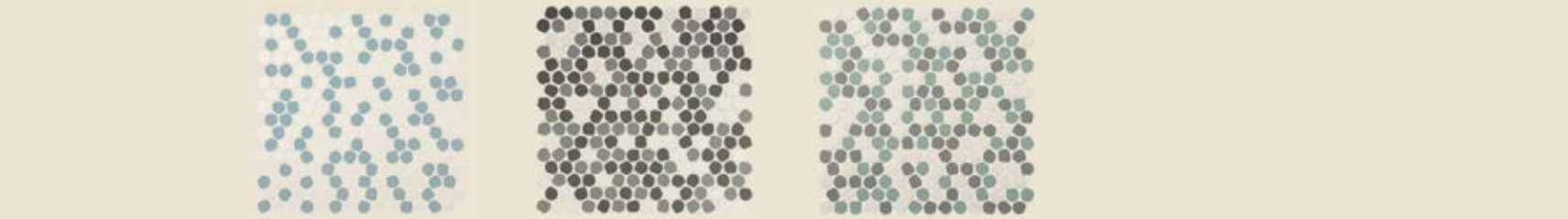
| | | | |
|---------------|---------------|---------------|---------------|
| COD. BONBONSB | COD. BONBONAQ | COD. BONBONAR | COD. BONBONSM |
|---------------|---------------|---------------|---------------|

| | | | |
|-------------------|------------------|------------------|-----------------|
| Treviso Ame White | Treviso Ame Ecrù | Treviso Ame Ocra | Treviso Ame Mud |
|-------------------|------------------|------------------|-----------------|



| | | | |
|-----------------|-----------------|-----------------|-----------------|
| COD. BONBONMIXE | COD. BONBONMIXF | COD. BONBONMIXA | COD. BONBONMIXB |
|-----------------|-----------------|-----------------|-----------------|

| | | | |
|------------------------------------|-----------------------------------|---------------------------------------|--|
| Treviso Ame White e Ecrù [A + B] | Treviso Ame Ecrù e Ocra [B + C] | Treviso Ame White e Ardesia [A + G] | Treviso Ame Aquamarine e Ardesia [F + G] |
|------------------------------------|-----------------------------------|---------------------------------------|--|



| | | |
|-----------------|-----------------|-----------------|
| COD. BONBONMIXG | COD. BONBONMIXC | COD. BONBONMIXD |
|-----------------|-----------------|-----------------|

| | | |
|--------------------------------------|--|---|
| Treviso Ame White, Skyblue [A + E] | Treviso Ame White, Ardesia e Smoke [A + G + H] | Treviso Ame White, Aquamarine e Ardesia [A + F + G] |
|--------------------------------------|--|---|

