

Coact building blocks





Table of contents

Family	3
Modular lounge	3 - 9
Booth	10 - 14
Benches	15 - 16
Table benches	17 - 18
Media units	19
Back media units	20 - 23
Corner media units	24 - 25
Tables for media units	26 - 29

Family

- Modular Lounge
- Booths
- Benches & tables
- Media units
- Coact lite

Lounge

- Available in variety of sizes with modular options
- All modular units available in mid or high back
- Both arms, single arms, or no arms available in 3 heights
- Back shelf options are available on modular units
- Three leg styles available in metal and/or wood
- Ganging available

Shapes

- All sizes shown in midback height



Club chair
22.5"w x 26.75"d x 32.5"h



Lounge
22.5"w x 28"d x 35.75"h



Wide
30"w x 28"d x 35.75"h



Loveseat
45"w x 28"d x 35.75"h



Sofa
67.5"w x 28"d x 35.75"h



Round corner
43"w x 43"d x 35.75"h



Table corner
43"w x 43"d x 35.75"h

Elevations

- Club chairs are always 32.5"h
- Mid back units are 35.75"h
- High back units are 49.75"h



Club



Mid



High

Arms

- Arms are available on left, right, and left & right
- Arms have three heights, low, mid, and high
- Single upholstered models, arm will match upholstery
- MT Multiple textile models can have contrasting arms

Configuration



Left



Right



Both

Heights



Low



Mid



High

Not available on mid back units

Arms

Tablet

- Tablet option available on low height arms
- Tablet finish is available in 3DL or veneer finishes
- The post is available in luster grey, polished, polar, or onyx
- Loveseat and sofa units can have left, right, or both locations
- Club and lounge size units can have a tablet on the left or right arm
- 100 lbs weight limit
- Tablet is 18" x 12"



Power

- Power units are in the front apron of lounge, wide, loveseat, and sofa units
- 1 AC power outlet, 1 USB A, 1 USB C in module
- Power can come in white, silver, or black
- Lounge and wide have 1 unit
- Loveseat and sofa can have left, right, or both power locations



Left
C6U
SLV Silver finish

Right
C6T
WHT White finish

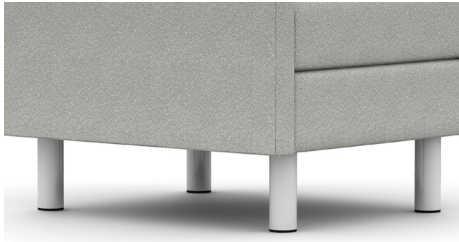
Both left and right
C6V
BLK Black finish

Lounge/Wide Center power
BLK Black finish



Leg options

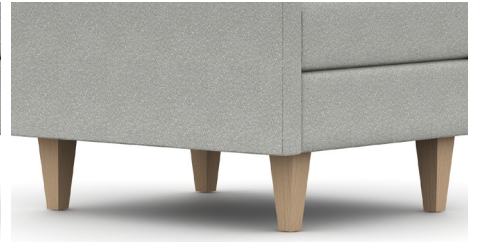
- Three leg options are available
- Wood legs available in standard wood leg veneers
- Metal legs available in polished chrome, onyx, luster gray, and polar



Metal leg
H4N



Tapered metal leg
H5X



Tapered wood leg
H4M

Club chair leg options

- Each leg type comes in two different heights; lounge & dining
- Dining height legs adds 2" to the overall height of the chair



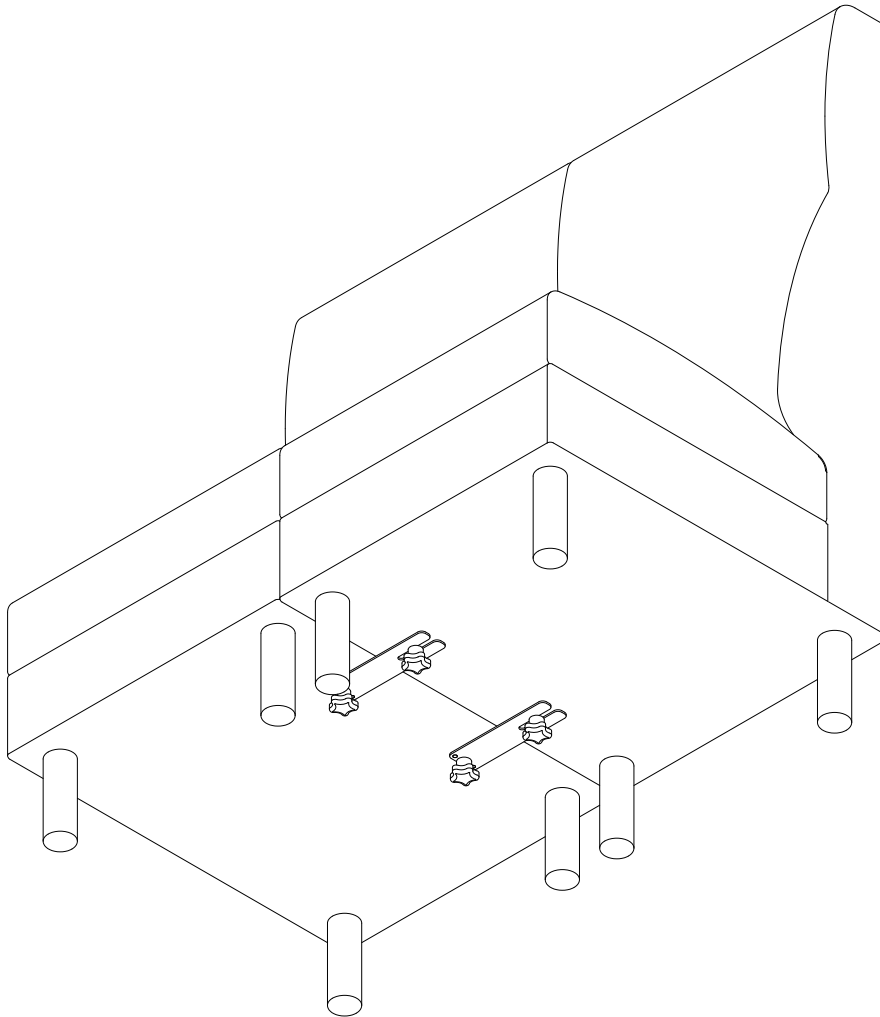
4 Prong base
C6Z - POLR Polar



5 Prong base
C7A - PAL Polished aluminum

Ganging

- When placing units together, the ganging option must be specified to include the ganging bracket, which will send 2 ganging brackets per connection point



C4- Ganging

Always ships 2 per connection



Back shelf options

- The back shelf comes either desk or bar height
- The back shelf is available in TFL, HPL, veneer, and studio veneer
- All modular units have the option for a back shelf
- Shelf is 12" deep and 1" smaller width than unit
- Support brackets can come onyx, polar, luster grey, and polished



Desk height shelf
Mid back lounge



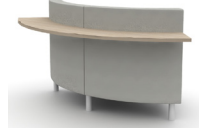
Desk height shelf
Mid back wide



Desk height shelf
Mid back loveseat



Desk height shelf
Mid back sofa



Desk height shelf
Mid back curve



Desk height shelf
High back lounge



Desk height shelf
High back wide



Desk height shelf
High back loveseat



Desk height shelf
High back sofa



Desk height shelf
High back curve



Bar height shelf
High back lounge



Bar height shelf
High back wide



Bar height shelf
High back loveseat



Bar height shelf
High back sofa



Bar height shelf
High back curve

Square corner options

- The back top is available in 3DL or veneer
- Can have spill groove with 3DL finish
- Can have a PS-68 power unit
- Can come high or mid back height



Mid Back



Mid Back

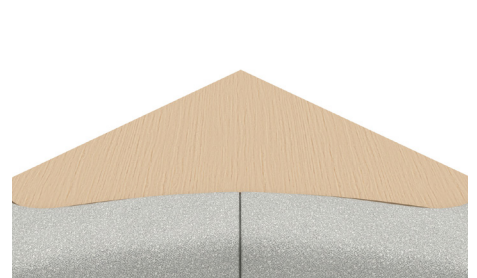
Back surface



3DL



3DL spill groove



Veneer

Power

- One 12 amp outlet, two 2.1 amp USB charging ports



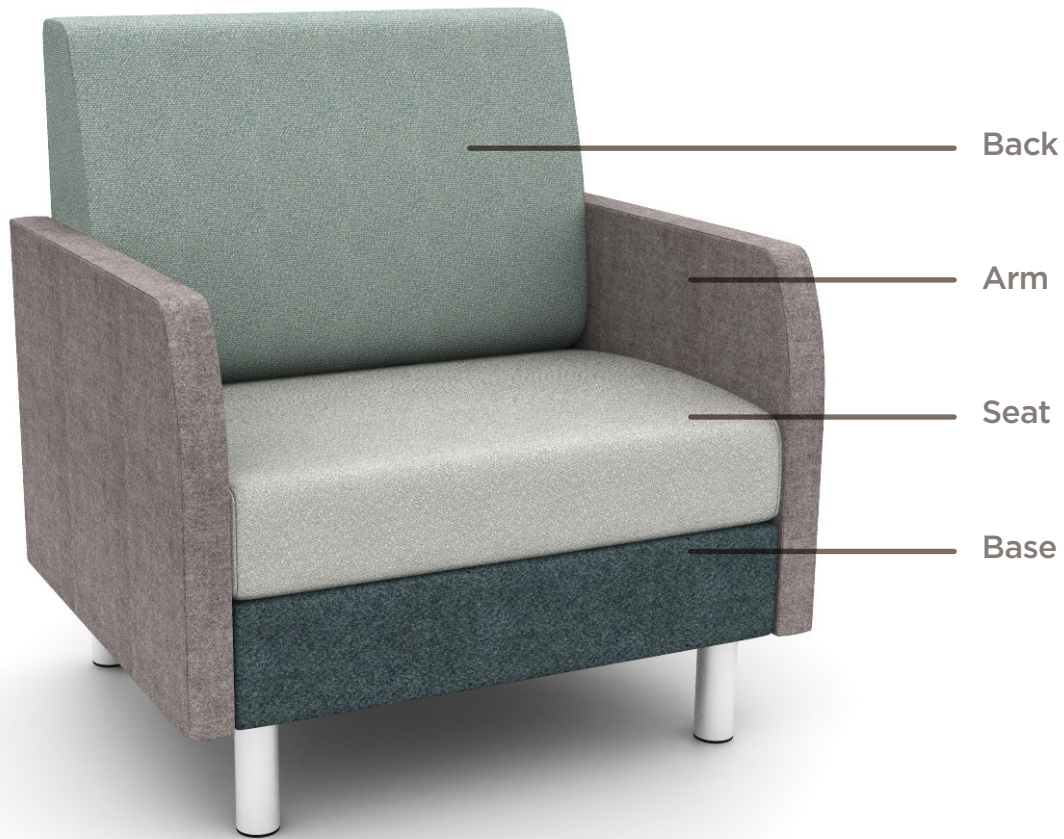
Silver



Black



Multiple textiles options



Booth Seating

- Booth seating comes in 3 widths, 2 corner units, and 2 heights
- Has double sided models for each width and height
- Plinth bases available for booth seating along with coact lounge base options
- Width units align with common table widths
- Same power options as Coact lounge
- Has tufted back option with limited upholstery options

Sizes



48"
78042-MBS/ 78042-HBS
48"w x 24.25"d x 35.75"h/49.75"h high back



60"
78142-MBS 78142-HBS
60"w x 24.25"d x 35.75"h/49.75"h high back



72"
78043-MBS/ 78043-HBS
72"w x 24.25"d x 35.75"h/49.75"h high back



48"
78042-MBD/ 78042-HBD
48"w x 46.5"d x 35.75"h/49.75"h high back



60"
78142-MBD/ 78142-HBD
60"w x 46.5"d x 35.75"h/49.75"h high back



72"
78043-MBD/ 78043-HBD
72"w x 46.5"d x 35.75"h/49.75"h high back



Rounded corner
78145-MBS/78145-HBS
39.25"w x 39.25"d x 35.75"h/49.75"h high back



Squared corner
78045-MBS/78045-HBS
39.25"w x 39.25"d x 35.75"h/49.75"h high back

Booth Seating

Elevations

- Booth seating is available in mid height (35.75"h) and high height (49.75"h)



Back tufting

- All mid back coact booth models can have tufted back
- Only approved materials can be applied to the back because of the tufting, click [here](#) to see list



Booth Seating

Tufting



48"
78042-MBST
48"w x 24.5"d x 35.75"h



60"
78142-MBST
60"w x 24.5"d x 35.75"h



72"
78043-MBST
72"w x 24.5"d x 35.75"h



48"
78042-MBDT
48"w x 46.5"d x 35.75"h



60"
78142-MBDT
60"w x 46.5"d x 35.75"h



72"
78043-MBDT
72"w x 46.5"d x 35.75"h



Rounded corner
78145-MBST
39.25"w x 39.25"d x 35.75"h

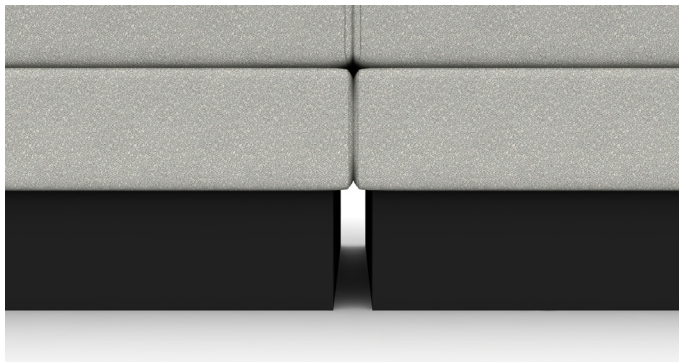


Squared corner
78045-MBST
39.25"w x 39.25"d x 35.75"h

Booth Seating

Plinth ganging base

- Plinth bases are inset 1.13" on either side of the unit
- When ganging you can select flush options to ensure there is no gap in the bases



Normal plinth base
J5

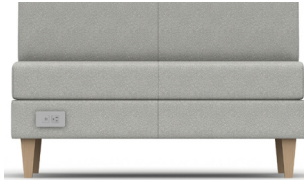


Ganged plinth base
PLGN - Ganging, default when ganging is selected
J5FL - Flush end right facing
J5FR - Flush end left facing
J5LR - Flush end left & right

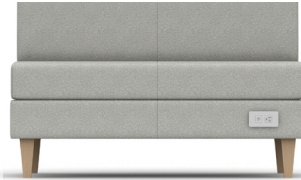
Booth Seating

Power

- Power units are in the front apron of booth units
- 1 AC power outlet, 1 USB A, 1 USB C in module
- Power can come in white, silver, or black
- Units can have left, right, or both power locations



Left
C6U
SLV Silver finish



Right
C6T
WHT White finish



Both left and right
C6V
BLK Black finish

Back surface on square corner units

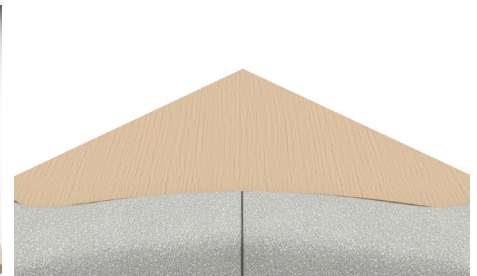
- The back top is available in 3DL or veneer
- Can have spill groove with 3DL finish
- Can have a PS-68 power unit
- Can come high or mid back height



3DL



3DL spill groove



Veneer

Power on back surface

- One 12 amp outlet, two 2.1 amp USB charging ports



Silver



Black



Benches

- Benches are upholstered and have multiple upholstery option
- Legs are available in round metal, tapered metal, and tapered wood legs
- Power is available in the single, double, and triple units
- Bench units can gang together, and gang to lounge units

Shapes



Single bench
22.5"w x 28"d x 18"h



Double bench
45"w x 28"d x 18"h



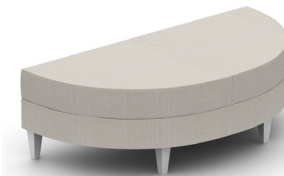
Triple bench
67.5"w x 28"d x 18"h



Round corner bench
43"w x 43"d x 18"h



Quarter round bench
28"w x 28"d x 18"h



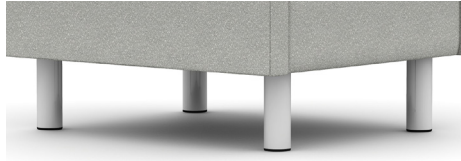
Half round bench
56"w x 28"d x 18"h



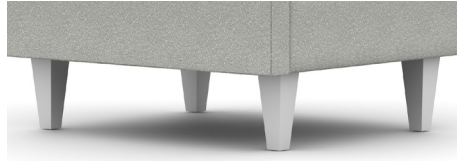
Coact building blocks

Leg options

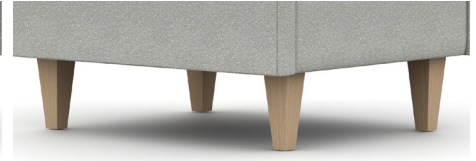
- Three leg options are available for Coact benches
- The wood legs are available in standard wood seating finishes
- Metal legs are available in polished chrome, polar, onyx, and luster grey



Round metal post
H4N



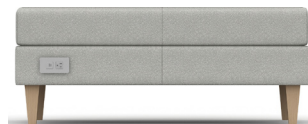
Square tapered metal
H5X



Square tapered wood
H4M

Power

- Power units are in the front apron of single, double, and triple units
- 1 AC power outlet. 1 USB A, 1 USB C in module
- Power can come in white, silver, or black
- Single widths have 1 unit
- Loveseat and sofa can have left, right, or both power locations



Left
C6U
SLV Silver finish



Right
C6T
WHT White finish



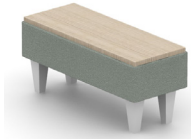
Both left and right
C6V
BLK Black finish



Single Center power
BLK Black finish

Table bench options

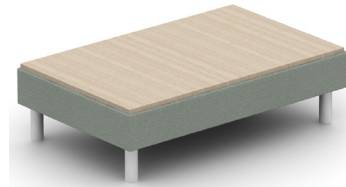
- The table bench options are available in solid color HPL, wood grain HPL, or veneer



Slim
11.25"w x 28"d x 13"h



Single
22.5"w x 28"d x 13"h



Double
45"w x 28"d x 13"h



Quarter round
28"w x 28"d x 13"h



Half round
56"w x 28"d x 13"h

Table bench finish options

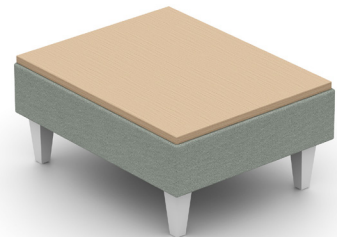
- 3DL available with spill groove



3DL



3DL
With spill groove



Veneer

Table bench power

- Table bench power is available in both the front of the units and the top
- The power unit on the front of the unit has 1 AC power outlet. 1 USB A, 1 USB C in module
- The power unit on the top of the unit is a PS-68 unit with 1 outlet and 2 USB-A units
- Front units can come silver, white, or black
- Top units can come black or silver

Narrow and single shape



Front/Silver
C6Y/SLV



Top/Silver
C6X/SLV



Front/Silver
C6Y/SLV



Top/Silver
C6X/SLV

Double shape



Front left/Silver
C6U/SLV



Front right/Silver
C6T/SLV



Front left & right/Silver
C6V/SLV



Top left/silver
C8Q/SLV



Top right/Silver
C8P/SLV

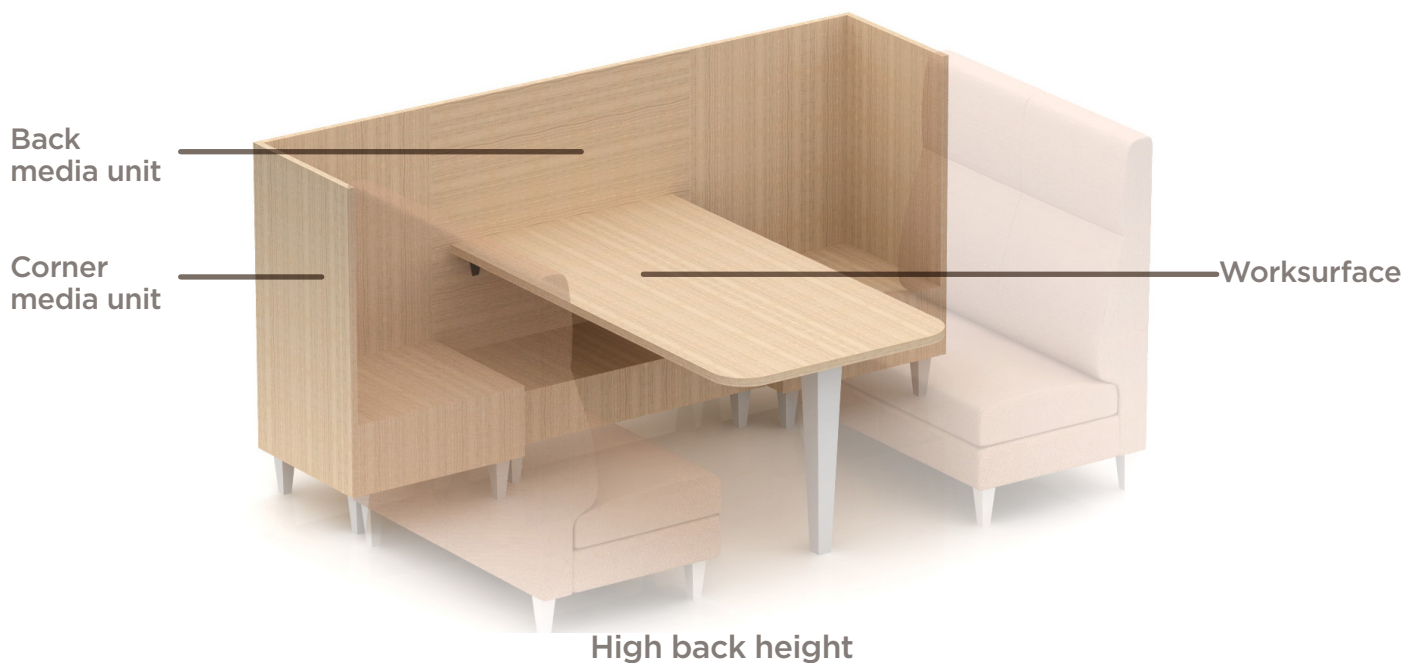
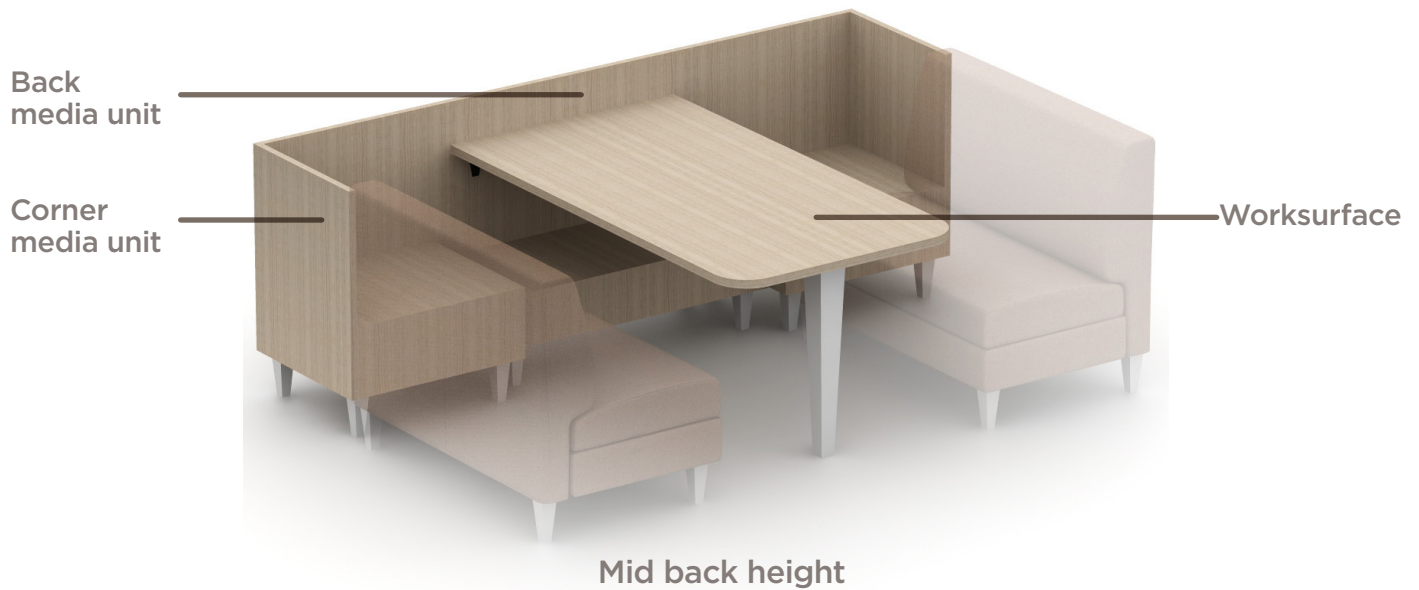


Top left & right/Silver
C8R/SLV

Coact media units

Components

- Units are made up of back media units, corner media units, and worksurfaces
- All units available in mid and high back
- Corner media units have either an upholstered back or wood back in laminate or veneer
- Coact modular lounge units can be ganged to the corners to create a lounge meeting space
- Power & grommets available in corner and back units





Back media units

- Back media units come in 2 heights: mid 35" & high 49"
- Units come in 2 widths: 42" & 54"
- All units have shelf and grommet options
- 42" wide units have a desk height table attached at 29"h
- Markerboards are available when using high height back media units, markerboard will be 34"w x 18.25"h

Size & Elevation



42"w x 19"d x 35"h
78-42MU-M



42"w x 19"d x 49"h
78-42MU-H

Glass markerboard option

- Markerboards are available when using high height back media units
 - Markerboard is 34"w x 18.1875"h

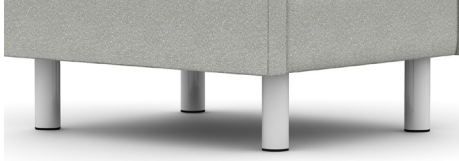


34"w x 18.1875"
78-3418GB

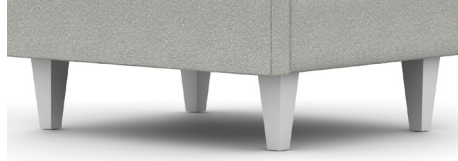


Leg options

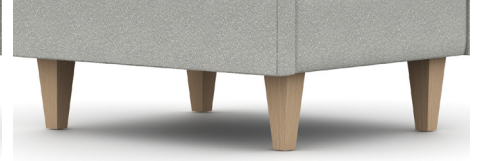
- Three leg options are available for coact media units
- The wood legs are available in standard wood seating finishes
- The metal legs are available in polished aluminum, onyx, polar, and luster grey



Round metal post
H4N



Square tapered metal
H5X



Square tapered wood
H4M

Storage options

- Storage can come in two configurations: no shelves, shelves
- 42" wide units have 19.5"w x 16"d x 4.75"h shelves
- Shelves can have an optional grommet that go through both shelves
- Grommet is 3.5" x 2.5"



H4R - 42" wide
Shelf no grommet



H4Q - 42" wide
Shelf with grommet

Power options

- Power can be in the top or front of the units
- Top power units are PS-68 units available in black or silver with (1) 12 amp power slot and (2) USB A slots.
- Front power units are mini-taps consisting of (1) 12 amp power slot and (1) USB A & (1) USB C slots available in white, black, and silver



H5B Left top
Black or silver



H5C Right top
Black or silver



H5D Left & right top
Black or silver



C6U Left front
Black, white, or silver



C6T Right front
Black, white, or silver



C6V Left & right front
Black, white, or silver



Black



Silver



White



Corner media units

- Corner media units come in 2 heights: mid 35" & high 49.75"
- Corner units come in left and right units
- Units can come with an upholstered back or wood back
- Units can come with power in the top and/or a grommet
- Units gang to center media units and modular lounge units

Size & Elevation



Mid back - Left facing
78-LMU-M
27.25"w x 23"d x 35"h



Mid back upholstered - Left facing
78261-MP
27.5"w x 28"d x 35.75"h



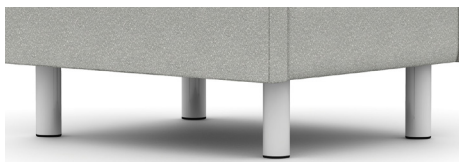
High back - Left facing
78-LMU-H
27.25"w x 23"d x 49"h



High back upholstered - Left facing
78261-MP
28"w x 23.5"d x 49.75"h

Leg options

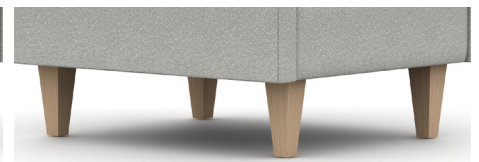
- Three leg options are available for coact media units
- The metal legs are available in polished aluminum, onyx, polar, and luster grey
- The wood legs are available in standard wood seating finishes



Round metal post
H4N



Square tapered metal
H5X



Square tapered wood
H4M

Power options

- Optional top power units are PS-68 in black or silver with (1) 12 amp power slot and (2) USB A slots
- Corner grommet option available in silver and black
- Power options available on all corner media units



Top power
Black BLK or silver SLV



Top grommet
Black LJ or silver LK



Top power & grommet



Top power
Black BLK or silver SLV



Top grommet
Black LJ or silver LK



Top power & grommet

Table options

- Tables are available and can attach to the center media units
- Tables attaching to a 42" w unit will be at desk height 29" h and be 36" d
- Tables can have tapered wood legs
- Tables are either 66" or 78" long
- Tables can be laminate or veneer



36" w x 66" l
78-6636MCT



36" w x 78" l
78-7836MCT

Table size and clearance

- 36" width tables will have 2.75" between the edge of the table and the edge of a lounge unit



36" w x 66" l
78-6636MCT

Leg options

- 29" high table can have a tapered wood leg



Tapered wood leg
78-TW4-29

Table options

- A grommet is available in the worksurface in Satin nickel or black
- Grommet has inside dimension of 2.9375" x 1.5" without insert and 1.5" x .75" with insert



Satin Nickel
LK



Black
LJ