

## Riggs building blocks

---





## Table of contents

Statement of line	3
Materiality	3
Elevations	4
Bracket types	5
Hinged panels	5
Overlapping panels	6

## Statement of line

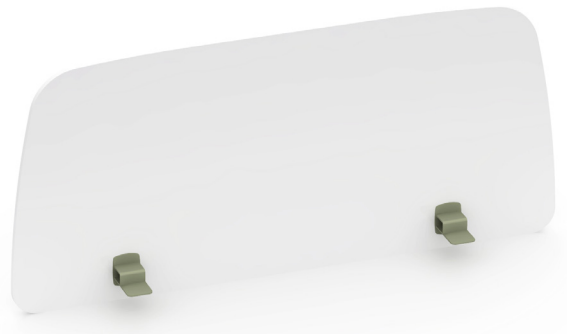
- Privacy Screens

## Materiality

- Screens available in upholstered, HPL, and veneer finishes
- Fixed bracket available in powdercoats
- Removable bracket only available in graphite
- Bracket cap available in powdercoats



**Upholstered**  
Has stitch detail around edge



**HPL**  
\*Only configuration to get marker board finish

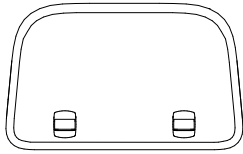


**Veneer**

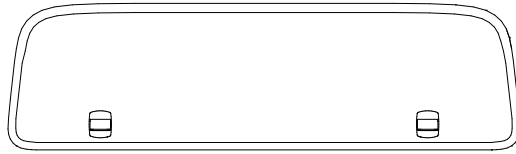
## Elevations

### 14 3/4" High

- Sits 11 3/4" above worksurface



**42-U2415FS**  
24" wide



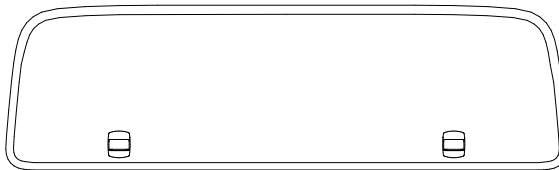
**42-U5215FS**  
51 3/4" wide

### 16 3/4" High

- Sits 13 3/4" above worksurface



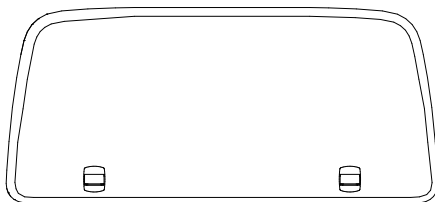
**42-U3617FS**  
36" wide



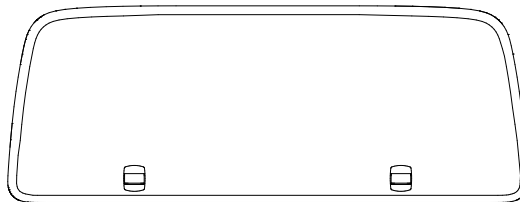
**42-U5817FS**  
57 1/2" wide

### 20 3/4" High

- Sits 17 3/4" above worksurface

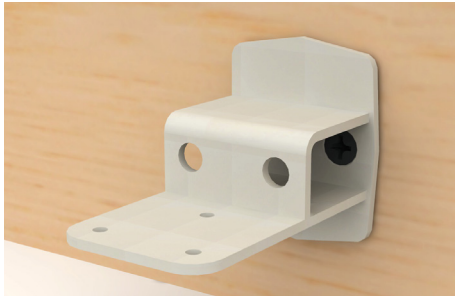


**42-U4621FS**  
45 3/4" wide



**42-U5521FS**  
54 3/4" wide

## Bracket types



**Fixed bracket**  
FMBK  
Can attach to any surface



**Removable bracket**  
RMBK  
Can only attach to 1" thick surfaces



**Bracket cap**  
Available in powdercoats  
On all panel types and brackets

## Hinged panel

- Hinged panels can be left or right facing by flipping the panel 180°
- Hinged panels are only available in upholstered models



42-U4621HS



42-U5215HS



42-U5221HS



42-U5817HS

## Overlapping panels

- Overlapping panels can only be used when combining fixed and removable panels or removable and removable panels
- Fixed brackets give 1 1/2" between the edge of the surface and the panel
- Removable brackets give 5/8" - 1 3/8" range between the edge of the surface and the panel



Top down view



Angled view

