

## Elevate Collection Installation Guidelines

### GENERAL INFORMATION

These instructions cover Mannington Commercial's Elevate Collection. All recommendations are based on the most recent available information. These instructions and recommendations must be followed.

Any topics not specifically covered here should be directed to Mannington Commercial's Technical Services at 800-241-2262 ext. 3.

Do not install Mannington Commercial products until job-site testing and subfloor preparations are finished and the work of all other trades is complete.

Mannington Commercial Elevate rugs are not suitable for external installation or unheated locations and should remain at a temperature between 55°F - 85°F (13° - 29°C) during its service life.

Mannington Commercial requires all products to be inspected prior to installation for proper style, color, order quantity, concealed damage and potential defects. Installation of flooring acknowledges acceptance of material. Report discrepancies immediately to Mannington Commercial at 800-241-2262 ext. 2 (claims). Mannington Commercial warranties specifically exclude claims involving carpet which has been cut and installed with visible defects.

Mannington Commercial products are manufactured to rigid quality standards. Because of the unique applications found with custom area rugs; Mannington can allow a cutting tolerance for inset rugs and wall-to-wall installations. Consideration of any special requirements regarding cutting tolerances will be necessary during the planning of your project.

Allow at least 24 hours prior to installation, lay out product on the job site and smooth out any wrinkles. Conditioning allows the carpet to relax and become more pliable for stretching and aligning pattern match.

### JOB SITE CONDITIONS

**TEMPERATURE** The installation area and materials to be installed shall be maintained at a minimum of 65°F (18.3°C) and a maximum of 85°F (29.4°C) for 48 hours before, during and for 48 hours after completion of the installation.

**AMBIENT RELATIVE HUMIDITY:** Relative humidity level extremes should also be avoided. General recommended humidity control level is between 35–55%.

- If a system other than the permanent HVAC source is utilized, it must provide proper control of both temperature and humidity to recommended or specific levels for the appropriate time duration.

**pH:** If pH readings exceed 9.0, contact the General contractor to correct the condition.

**LIGHTING:** Operative to level of occupancy.

## Installation Guidelines

**SUBFLOOR:** Subfloor must be clean (free of dirt, grease, oil, paint, sealers, curing, hardening, or parting compounds, or any substance that may stain or prevent adhesion), smooth, flat, sound, fit for purpose and free of movement, excessive moisture and high alkalinity.

- **PATCH:** Surface cracks, grooves, depressions, control joints or other non-moving joints, and other irregularities shall be filled or smoothed with high quality Portland cement-based patching or underlayment compound for filling or smoothing, or both.

### **MOISTURE:**

- **RELATIVE HUMIDITY IN SUBSTRATE:** Determined by the ASTM-F-2170-09 Relative Humidity in situ Probe Test should not exceed 85%.
- **MOISTURE VAPOR EMISSION (MVER):** Per the ASTM F-1869 Calcium Chloride test method should not exceed 5 lbs.

## **LAYOUT**

**AREA SQUARENESS:** Check the installation area for squareness and strike a chalk line perpendicular to an outside wall or adjoining hard surface across the area to be installed. A laser square also works well. Align the rug to these lines as they will help you keep the patterns aligned and square across the area.

## **INSTALLATION - DIRECT GLUE**

**SEAMS:** While Elevate rugs can be made in large format and rarely will require a seam to be made on site, there may be an occasion where a seam may be required in the field. A comprehensive seaming diagram must be preplanned and approved on by the purchasing parties prior to installation. NOTE: The seams should run lengthwise in major areas, parallel to traffic paths, into natural and artificial light sources, and be avoided at major pivot points when possible.

**SEAM SEALER:** Mannington Commercial Edge Guard Seam Sealer – 400 LF/ 32oz Bottle

**SEAMING:** Mannington Commercial does not guarantee invisible seams; however, excellent seaming is achievable when following these procedures. It is important to note, that due to the unique method in which Elevate Rugs are manufactured, row cutting seams are not possible. In addition, TOP CUTTING IS NOT RECOMMENDED.

1. Mannington Commercial recommends inserting pattern locators from the carpet face through to the backing. Straight hand sewing needles, fine pointed finishing nails, or ice picks are all very good for marking the patterns.
2. Find a distinct pattern reference point on the face of the pattern and insert the needle through the secondary backing. Repeat this procedure about every 3ft (depending on pattern size) using the same reference point on the pattern down the entire length of the intended seam.
3. Flip the carpet over and place a straight edge next to the protruding pattern locators. Ensure the straight edge is properly aligned and cut the carpet from the back. Be careful to cut just deep enough to penetrate the primary backing and avoid cutting the face fibers. Trim to a clean finish with sharp carpet shears.
4. Repeat these cutting procedures on the adjoining breadth making sure you use the same pattern reference points. Many products have very similar pattern markings that may not necessarily be the exact same reference point.
5. Cross seams need to be prepared using the same above pattern locator techniques.
6. Mannington Commercial requires a 1/8" bead of Mannington's Edge Guard acrylic latex seam sealer at all seams. The sealer should be applied so that it encapsulates the base of the yarn tufts, the primary backing and secondary backing. Wet sealer can be cleaned off the carpet face with soap and water.

## Installation Guidelines

**ADHESIVE:** Mannington Commercial M-Guard Ultra. Trowel: 1/8" x 1/8" x 1/8" U notch – 8 yards/gallon

1. Lay carpet into the "wet" adhesive so that the carpet may slide in the adhesive to obtain pattern match.
2. Using dry lines and stay nails, (suitable for the flooring type, wood or concrete) match pattern at the midpoint of the seam so that elongations can be corrected to each wall. In most situations this will yield acceptable results.
3. Using a two head power stretcher or a "dead man", stretch the shorter patterns to match the longer ones. Use stay nails to hold the stretched side on pattern and use a knee kicker, or preferably a doubleheaded mini-stretcher, to close gaps or push any fullness toward the center of the carpet. Leave stay nails in place until adhesive has reached adequate strength.

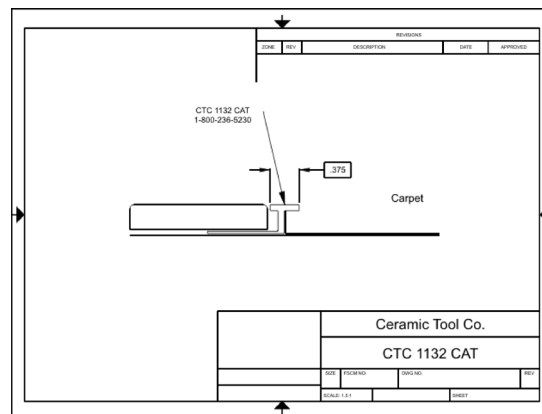
**ROLLING:** To ensure adequate adhesive transfer, carpet with secondary backing should be pressed into the adhesive bed by using 75 lb. 3 section roller. Roll in both directions, but do not over roll.

### ATTENTION

**WHEN ELEVATE RUGS ARE BEING USED AS AN INSET INTO HARD SURFACE, THE FOLLOWING INFORMATION MUST BE CONSIDERED. FAILURE TO COMPLY WITH THE RECOMMENDATIONS LISTED BELOW MAY VOID WARRANTIES.**

The average thickness of an Elevate Collection rug is ½" thick. This is important to know when using an Elevate Collection rug as an inset into hard surface. Mannington Commercial requires that when an Elevate Collection rug is being used in this manner, that it be finished level to or slightly lower than the adjoining hard surface and that a 1/8th inch bead of Mannington Edge Guard Seam Sealer be applied next to the hard surface. This will help to prevent the edges from raveling and being damaged from floor maintenance associated with the cleaning of the adjacent hard surface. The adjoining hard surface thickness must be considered when planning for this application. This is especially true when installing an Elevate Collection rug as a double glue over cushion.

When possible, and when the hard surface is being installed, the appropriate edge protection should also be considered as an added safeguard. Manufacturers such as Ceramic Tool Company and Schluter have a variety of different profiles that should be sufficient for most applications. An example of a proper profile is shown below.



Ceramic Tool Company: 800-236-5230 <http://www.ceramictool.com/index.html>

Schluter Systems: 800-472-4588 [https://www.schluter.com/schluter-us/en\\_US/](https://www.schluter.com/schluter-us/en_US/)