



Poetica Collection

Mannington
COMMERCIAL



Cover: Fitzgerald (Broadloom) - Bach 3317
Above: Somerset (Broadloom) - Chopin 8211



Gaskell (Broadloom) - Bach 33117



Lewis (Broadloom) - Debussy 42114



Orwell (Broadloom) - Bach 33117



Schubert (Broadloom) - Diamante 83116



Rossetti 2 (Broadloom) - Diamante 83116



Bradbury (Broadloom) - Diamante 83116



Stravinsky (Broadloom) - Diamante 83116



Vivaldi (Broadloom) - Diamante 83116



Whitman (Broadloom) - Diamante 8316



Yeats 3 (Broadloom) - Diamante 83116



Lewis (Broadloom) - Debussy 42114



Camus (Broadloom) – Debussy 42114



Kipling 3 (Broadloom) - Debussy 42114



Montgomery (Broadloom) - Debussy 42114



Doyle (Broadloom) - Chopin 82111



Somerset (Broadloom) - Chopin 8211



Carroll (Broadloom) - Batten 85119



Irving (Broadloom) - Batten 85119



Montgomery (Modular) - Sonnet 13112;
Installation - Monolithic



Camus (Modular) - Sonnet 13112
Installation - Vertical Ashlar



Edge Effects Wall Base Collection

An architectural accent, creating the elegant effect of a milled wood base without the expensive installation, indentations, scuffs, and abrasions. Requires no nailing, priming, or painting. Co-extruded thermoplastic rubber (type tp) engineered for flexible application to walls, corners, and columns.

36 Accord Colors

Plus 401 White, 137 Pearl, 157 Nougat, and 168 Bluish White

17 Styles

In a smooth, matte finish for a flawless look in any room.

7 Profile Heights

Style-dependent, in four thicknesses.

Sustainability

- > FloorScore
- > mindful MATERIALS
- > HPD

Warranty

- > Limited 5-Year Commercial



Cetera EECET



Illusion EEILL



Etched EEETC

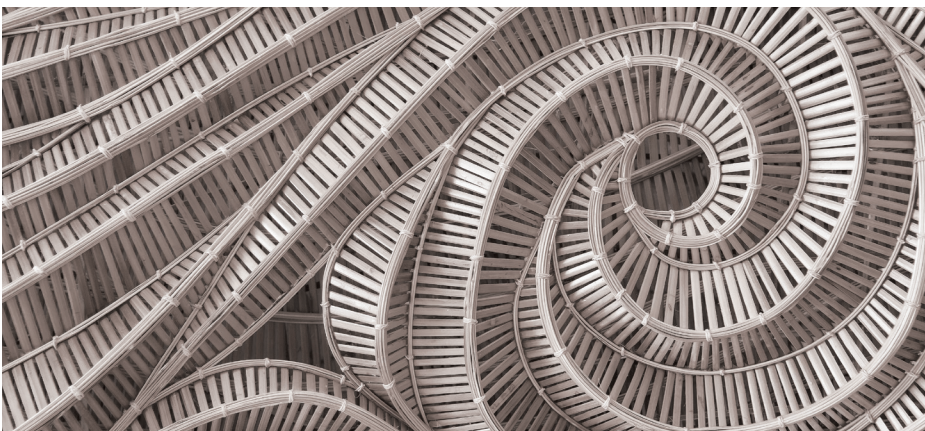
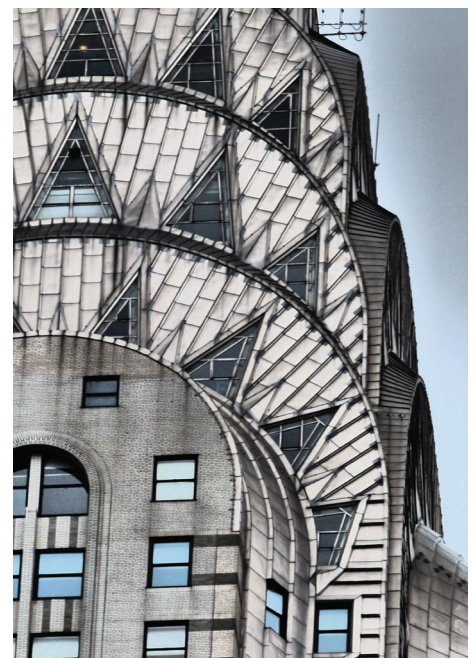
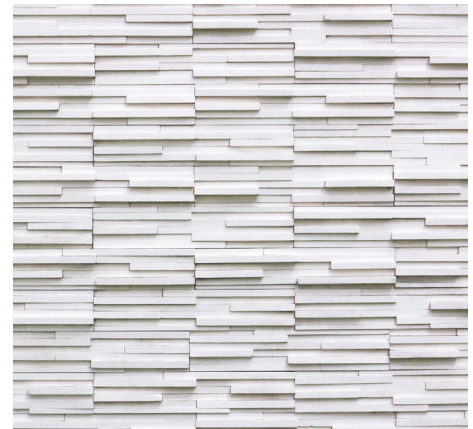
All styles are viewable online.



View Edge Effects Online

A Poetic Path

Poetica reimagines patterns from some of the most striking eras in design. New interpretations of aesthetics from Mid-century Modern, Spanish Colonial, Art Deco and more are captured by a range of patterns in broadloom and modular carpet. Each style tells a unique design story in crisp, contemporary colors and patterning. With the Poetica Collection, healthcare and senior living spaces can be brought to life with impressive, enduring appeal.



Poetica Collection

Style	Camus (Modular)	Montgomery (Modular)
Construction	Patterned Loop	Patterned Loop
Face Fiber	Type 6,6 Nylon	Type 6,6 Nylon
Dye Method	Solution/Yarn	Solution/Yarn
Guage	5/64 (50.39 per 10 cm)	5/64 (50.39 per 10 cm)
Stitches Per Inch	10.66 (41.97 per 10 cm)	10.83 (42.64 per 10 cm)
Density	5,610 (208.46 kg/m³)	5,610 (208.46 kg/m³)
Pile Thickness	0.154" (3.91 mm)	0.154" (3.91 mm)
Weight	24 oz/yd² (814 g/m²)	24 oz/yd² (814 g/m²)
Backing Type	Infinity® 2 Modular	Infinity® 2 Modular
Sizes	24" x 24" (60.96 x 60.96 cm)	24" x 24" (60.96 x 60.96 cm)
Colors	12	12
Packaging	8 yd² / 18 Tiles	8 yd² / 18 Tiles
Adhesive	Infinity Adhesive	Infinity Adhesive
Installation Method	Horizontal Brick Ashlar, Monolithic Vertical Ashlar	Horizontal Brick Ashlar, Monolithic Vertical Ashlar
Testing		
Dimensional Stability (Aachen Test)	Passes	
Electrostatic Propensity (AATCC 134)	Less than 3.0 kV	
Flooring Radiant Panel (ASTM E648)	Passes - Class 1; ≥ 0.45 watts/cm²	
Smoke Density (ASTM E662)	Passes - ≤ 450	
Methenamine Pill Test (ASTM D2859)	Passes	
Hexapod (ASTM D5252) TARR	3.5 - severe	
Environmental Data		
NSF/ANSI 140 Certification	Infinity® 2 Modular - Gold	
Recycled Content	Contains recycled content	
Indoor Air Quality	CRI Green Label Plus Certified	
Product Declarations	Third Party Verified EPD, HPD	
Carbon Offset	105% Cradle to Gate (A1 - A3), visit website for more information	
LEED	May contribute to LEED credits: Building Product Disclosure & Optimization - EPDs; Building Product Disclosure & Optimization - Sourcing Raw Materials; Building Product Disclosure & Optimization - Material Ingredients; IEQc2 - Low Emitting Materials	
mindful MATERIALS	Visit mindfulmaterials.com for current transparency information	
Manufacturing	Calhoun, GA (USA) - ISO 14001 Registered	
Warranty		
	Limited Lifetime Wear & Backing Warranty Limited 15-Year XGUARD® Stain Resistant Warranty Limited 15-Year ColorSafe® Bleach Resistant Warranty	

- Specifications are based on averages from normal manufacturing tolerances. Such variations do not affect product performance.
- Protective chair pads are recommended under office chairs with roller casters to preserve appearance and avoid premature wear.
- As with all quality carpets, slight variation in color may occur from dye lot to dye lot.
- Backing or other materials may be changed without prior notice when shortages occur or when technological advancements provide improved product performance.
- This product is intended solely for use as an indoor floor covering and is not recommended or sold for any other purpose.
- The inherent characteristics of geometric linear patterns can result in double-dark or double-light lines at the seam and to some extent pattern run-off or bias. This is not a manufacturing defect, and as such, should be considered when selecting a modular carpet installation method.
- Cut piles, cut and loops and tip-sheared constructions are not recommended for heavy commercial traffic, corridors or through channeled traffic. Please contact your Mannington Commercial representative for information regarding these constructions and your specific end use application.
- Please make your final selection from an actual swatch. To order samples, go to manningtoncommercial.com or call 800.241.2262 ext. 6913.

Poetica Collection

Style	Bradbury (Broadloom)	Camus (Broadloom)	Carroll (Broadloom)
Construction	Tip-Sheared Patterned Loop	Patterned Loop	Tip-Sheared Patterned Loop
Face Fiber	Type 6,6 Nylon	Type 6,6 Nylon	Type 6,6 Nylon
Dye Method	Solution/Yarn	Solution/Yarn	Yarn/Solution
Gauge	5/64 (50.39 per 10 cm)	5/64 (50.39 per 10 cm)	5/64 (50.39 per 10 cm)
Stitches Per Inch	11.33 (44.61 per 10 cm)	10.66 (41.97 per 10 cm)	10.66 (41.97 per 10 cm)
Density	5,760 (214.03 kg/m³)	5,610 (208.46 kg/m³)	5,760 (214.03kg/m³)
Pile Thickness	0.150" (3.81 mm)	0.154" (3.91 mm)	0.150" (3.81 mm)
Weight	24 oz/yd² (814 g/m²)	24 oz/yd² (814 g/m²)	24 oz/yd² (814 g/m²)
Backing Type	UltraBac® RE, Integra® HP	UltraBac® RE, Integra® HP	UltraBac® RE, Integra® HP
Size	12' 6" width (3.81 m)	12' 6" width (3.81 m)	12' 6" width (3.81 m)
Colors	12	12	12
Packaging	18 3/4" W x 40 1/2" L	18 3/4" W x 40 1/2" L	18 3/4" W x 23 1/2" L
Adhesive	Mannington Ultra Adhesive Mannington Integra 2 Adhesive	Mannington Ultra Adhesive Mannington Integra 2 Adhesive	Mannington Ultra Adhesive Mannington Integra 2 Adhesive
Testing			
Dimensional Stability (Aachen Test)	Passes		
Electrostatic Propensity (AATCC 134)	Less than 3.0 kV		
Flooring Radiant Panel (ASTM E648)	Passes - Class 1 ≥ 0.45 watts/cm²		
Smoke Density (ASTM E662)	Passes ≤ 450		
Methenamine Pill Test (ASTM D2859)	Passes		
Hexapod (ASTM D5252) TARR	3.5 - severe		
Environmental Data			
NSF/ANSI 140 Certification	UltraBac® RE - Gold, Integra® HP - Gold		
Recycled Content	Contains recycled content		
Indoor Air Quality	CRI Green Label Plus Certified		
Product Declarations	Third Party Verified EPD, HPD		
Carbon Offset	105% Cradle to Gate (A1 - A3), visit website for more information		
LEED	May contribute to LEED credits: Building Product Disclosure & Optimization - EPDs; Building Product Disclosure & Optimization - Sourcing Raw Materials; Building Product Disclosure & Optimization - Material Ingredients; IEQc2 -Low Emitting Materials		
mindful MATERIALS	Visit mindfulmaterials.com for current transparency information		
Manufacturing	Calhoun, GA (USA) - ISO 14001 Registered		
Warranty			
	Limited Lifetime Wear & Backing Warranty Limited 15-Year XGUARD® Stain Resistant Warranty Limited 15-Year ColorSafe® Bleach Resistant Warranty		

- Specifications are based on averages from normal manufacturing tolerances. Such variations do not affect product performance.
- Protective chair pads are recommended under office chairs with roller casters to preserve appearance and avoid premature wear.
- As with all quality carpets, slight variation in color may occur from dye lot to dye lot.
- Backing or other materials may be changed without prior notice when shortages occur or when technological advancements provide improved product performance.
- This product is intended solely for use as an indoor floor covering and is not recommended or sold for any other purpose.
- The inherent characteristics of geometric linear patterns can result in double-dark or double-light lines at the seam and to some extent pattern run-off or bias. This is not a manufacturing defect, and as such, should be considered when selecting a modular carpet installation method.
- Please make your final selection from an actual swatch. To order samples, go to manningtoncommercial.com or call 800.241.2262 ext. 6913.

Poetica Collection

Style	Doyle (Broadloom)	Fitzgerald (Broadloom)	Gaskell (Broadloom)
Construction	Tip-Sheared Patterned Loop	Patterned Loop	Tip-Sheared Patterned Loop
Face Fiber	Type 6,6 Nylon	Type 6,6 Nylon	Tyle 6,6 Nylon
Dye Method	Solution/Yarn	Solution/Yarn	Solution/Yarn
Gauge	5/64 (50.39 per 10 cm)	5/64 (50.39 per 10 cm)	5/64 (50.39 per 10 cm)
Stitches Per Inch	11.16 (43.94 per 10 cm)	11.33 (44.61 per 10 cm)	11.33 (44.61 per 10cm)
Density	5,760 (214.03 kg/m³)	7,016 (260.70 kg/m³)	7,016 (260.70 kg/m³)
Pile Thickness	0.150" (3.81 mm)	0.118" (3.00 mm)	0.118" (3.00 mm)
Weight	24 oz/yd² (814 g/m²)	23 oz/yd² (780 g/m²)	23 oz/yd² (780 g/m²)
Backing Type	UltraBac® RE, Integra® HP	UltraBac® RE, Integra® HP	UltraBac® RE, Integra® HP
Size	12' 6" width (3.81 m)	12' 6" width (3.81 m)	12' 6" width (3.81 m)
Colors	12	12	12
Packaging	18 3/4" W x 23" L	18 3/4" W x 28 1/2" L	18 3/4" W x 21" L
Adhesive	Mannington Ultra Adhesive Mannington Integra 2 Adhesive	Mannington Ultra Adhesive Mannington Integra 2 Adhesive	Mannington Ultra Adhesive Mannington Integra 2 Adhesive
Testing			
Dimensional Stability (Aachen Test)	Passes		
Electrostatic Propensity (AATCC 134)	Less than 3.0 kV		
Flooring Radiant Panel (ASTM E648)	Passes - Class 1 ≥ 0.45 watts/cm²		
Smoke Density (ASTM E662)	Passes ≤ 450		
Methenamine Pill Test (ASTM D2859)	Passes		
Hexapod (ASTM D5252) TARR	3.5 - severe		
Environmental Data			
NSF/ANSI 140 Certification	UltraBac® RE - Gold, Integra® HP - Gold		
Recycled Content	Contains recycled content		
Indoor Air Quality	CRI Green Label Plus Certified		
Product Declarations	Third Party Verified EPD, HPD		
Carbon Offset	105% Cradle to Gate (A1 - A3), visit website for more information		
LEED	May contribute to LEED credits: Building Product Disclosure & Optimization - EPDs; Building Product Disclosure & Optimization - Sourcing Raw Materials; Building Product Disclosure & Optimization - Material Ingredients; IEQc2 -Low Emitting Materials		
mindful MATERIALS	Visit mindfulmaterials.com for current transparency information		
Manufacturing	Calhoun, GA (USA) - ISO 14001 Registered		
Warranty			
	Limited Lifetime Wear & Backing Warranty Limited 15-Year XGUARD® Stain Resistant Warranty Limited 15-Year ColorSafe® Bleach Resistant Warranty		

• Specifications are based on averages from normal manufacturing tolerances. Such variations do not affect product performance.

• Protective chair pads are recommended under office chairs with roller casters to preserve appearance and avoid premature wear.

• As with all quality carpets, slight variation in color may occur from dye lot to dye lot.

• Backing or other materials may be changed without prior notice when shortages occur or when technological advancements provide improved product performance.

• This product is intended solely for use as an indoor floor covering and is not recommended or sold for any other purpose.

• The inherent characteristics of geometric linear patterns can result in double-dark or double-light lines at the seam and to some extent pattern run-off or bias. This is not a manufacturing defect, and as such, should be considered when selecting a modular carpet installation method.

• Please make your final selection from an actual swatch. To order samples, go to manningtoncommercial.com or call 800.241.2262 ext. 6913.

Poetica Collection

Style	Irving (Broadloom)	Kipling 3 (Broadloom)	Lewis (Broadloom)
Construction	Patterned Loop	Tip-Sheared Patterned Loop	Tip-Sheared Patterned Loop
Face Fiber	Type 6,6 Nylon	Type 6,6 Nylon	Tyle 6,6 Nylon
Dye Method	Solution/Yarn	Solution/Yarn	Solution/Yarn
Gauge	5/64 (50.39 per 10 cm)	5/64 (50.39 per 10 cm)	5/64 (50.39 per 10 cm)
Stitches Per Inch	10.66 (41.97 per 10cm)	12.66 (49.84 per 10 cm)	11 (43.31 per 10 cm)
Density	6,400 (237.81 kg/m³)	7,016 (260.70 kg/m³)	5,760 (214.03 kg/m³)
Pile Thickness	0.135" (3.43 mm)	0.118" (3.00 mm)	0.150" (3.81 mm)
Weight	24 oz/yd² (814 g/m²)	23 oz/yd² (780 g/m²)	24 oz/yd² (814 g/m²)
Backing Type	UltraBac® RE, Integra® HP	UltraBac® RE, Integra® HP	UltraBac® RE, Integra® HP
Size	12' 6" width (3.81 m)	12' 6" width (3.81 m)	12' 6" width (3.81 m)
Colors	12	12	12
Packaging	18 3/4" W x 22 1/2" L	18 3/4" W x 31 1/2" L	18 3/4" W x 36" L
Adhesive	Mannington Ultra Adhesive Mannington Integra 2 Adhesive	Mannington Ultra Adhesive Mannington Integra 2 Adhesive	Mannington Ultra Adhesive Mannington Integra 2 Adhesive
Testing			
Dimensional Stability (Aachen Test)	Passes		
Electrostatic Propensity (AATCC 134)	Less than 3.0 kV		
Flooring Radiant Panel (ASTM E648)	Passes - Class 1 ≥ 0.45 watts/cm²		
Smoke Density (ASTM E662)	Passes ≤ 450		
Methenamine Pill Test (ASTM D2859)	Passes		
Hexapod (ASTM D5252) TARR	3.5 - severe		
Environmental Data			
NSF/ANSI 140 Certification	UltraBac® RE - Gold, Integra® HP - Gold		
Recycled Content	Contains recycled content		
Indoor Air Quality	CRI Green Label Plus Certified		
Product Declarations	Third Party Verified EPD, HPD		
Carbon Offset	105% Cradle to Gate (A1 - A3), visit website for more information		
LEED	May contribute to LEED credits: Building Product Disclosure & Optimization - EPDs; Building Product Disclosure & Optimization - Sourcing Raw Materials; Building Product Disclosure & Optimization - Material Ingredients; IEQc2 -Low Emitting Materials		
mindful MATERIALS	Visit mindfulmaterials.com for current transparency information		
Manufacturing	Calhoun, GA (USA) - ISO 14001 Registered		
Warranty			
	Limited Lifetime Wear & Backing Warranty Limited 15-Year XGUARD® Stain Resistant Warranty Limited 15-Year ColorSafe® Bleach Resistant Warranty		

- Specifications are based on averages from normal manufacturing tolerances. Such variations do not affect product performance.
- Protective chair pads are recommended under office chairs with roller casters to preserve appearance and avoid premature wear.
- As with all quality carpets, slight variation in color may occur from dye lot to dye lot.
- Backing or other materials may be changed without prior notice when shortages occur or when technological advancements provide improved product performance.
- This product is intended solely for use as an indoor floor covering and is not recommended or sold for any other purpose.
- The inherent characteristics of geometric linear patterns can result in double-dark or double-light lines at the seam and to some extent pattern run-off or bias. This is not a manufacturing defect, and as such, should be considered when selecting a modular carpet installation method.
- Please make your final selection from an actual swatch. To order samples, go to manningtoncommercial.com or call 800.241.2262 ext. 6913.

Poetica Collection

Style	Montgomery (Broadloom)	Orwell (Broadloom)	Rossetti 2 (Broadloom)
Construction	Patterned Loop	Patterned Loop	Patterned Loop
Face Fiber	Type 6,6 Nylon	Type 6,6 Nylon	Tyle 6,6 Nylon
Dye Method	Solution/Yarn	Solution/Yarn	Solution/Yarn
Gauge	5/64 (50.39 per 10 cm)	5/64 (50.39 per 10 cm)	5/64 (50.39 per 10 cm)
Stitches Per Inch	10.83 (42.64 per 10 cm)	11.33 (44.61 per 10 cm)	11.66 (45.91 per 10 cm)
Density	5,610 (208.46 kg/m³)	5,760 (214.03 kg/m³)	6,400 (237.81 kg/m³)
Pile Thickness	0.154" (3.91 mm)	0.154" (3.91 mm)	0.135" (3.43 mm)
Weight	24 oz/yd² (814 g/m²)	24 oz/yd² (814 g/m²)	24 oz/yd² (814 g/m²)
Backing Type	UltraBac® RE, Integra® HP	UltraBac® RE, Integra® HP	UltraBac® RE, Integra® HP
Size	12' 6" width (3.81 m)	12' 6" width (3.81 m)	12' 6" width (3.81 m)
Colors	12	12	12
Packaging	18 3/4" W x 10 1/2" L	18 3/4" W x 10 1/2" L	18 3/4" W x 43" L
Adhesive	Mannington Ultra Adhesive Mannington Integra 2 Adhesive	Mannington Ultra Adhesive Mannington Integra 2 Adhesive	Mannington Ultra Adhesive Mannington Integra 2 Adhesive
Testing			
Dimensional Stability (Aachen Test)	Passes		
Electrostatic Propensity (AATCC 134)	Less than 3.0 kV		
Flooring Radiant Panel (ASTM E648)	Passes - Class 1 ≥ 0.45 watts/cm²		
Smoke Density (ASTM E662)	Passes ≤ 450		
Methenamine Pill Test (ASTM D2859)	Passes		
Hexapod (ASTM D5252) TARR	3.5 - severe		
Environmental Data			
NSF/ANSI 140 Certification	UltraBac® RE - Gold, Integra® HP - Gold		
Recycled Content	Contains recycled content		
Indoor Air Quality	CRI Green Label Plus Certified		
Product Declarations	Third Party Verified EPD, HPD		
Carbon Offset	105% Cradle to Gate (A1 - A3), visit website for more information		
LEED	May contribute to LEED credits: Building Product Disclosure & Optimization - EPDs; Building Product Disclosure & Optimization - Sourcing Raw Materials; Building Product Disclosure & Optimization - Material Ingredients; IEQc2 -Low Emitting Materials		
mindful MATERIALS	Visit mindfulmaterials.com for current transparency information		
Manufacturing	Calhoun, GA (USA) - ISO 14001 Registered		
Warranty			
	Limited Lifetime Wear & Backing Warranty Limited 15-Year XGUARD® Stain Resistant Warranty Limited 15-Year ColorSafe® Bleach Resistant Warranty		

- Specifications are based on averages from normal manufacturing tolerances. Such variations do not affect product performance.
- Protective chair pads are recommended under office chairs with roller casters to preserve appearance and avoid premature wear.
- As with all quality carpets, slight variation in color may occur from dye lot to dye lot.
- Backing or other materials may be changed without prior notice when shortages occur or when technological advancements provide improved product performance.
- This product is intended solely for use as an indoor floor covering and is not recommended or sold for any other purpose.
- The inherent characteristics of geometric linear patterns can result in double-dark or double-light lines at the seam and to some extent pattern run-off or bias. This is not a manufacturing defect, and as such, should be considered when selecting a modular carpet installation method.
- Please make your final selection from an actual swatch. To order samples, go to manningtoncommercial.com or call 800.241.2262 ext. 6913.

Poetica Collection

Style	Schubert (Broadloom)	Somerset (Broadloom)	Stravinsky (Broadloom)
Construction	Patterned Loop	Tip-Sheared Patterned Loop	Patterned Loop
Face Fiber	Type 6,6 Nylon	Type 6,6 Nylon	Tyle 6,6 Nylon
Dye Method	Solution/Yarn	Solution/Yarn	Solution/Yarn
Gauge	5/64 (50.39 per 10 cm)	5/64 (50.39 per 10 cm)	5/64 (50.39 per 10 cm)
Stitches Per Inch	10.66 (41.97 per 10 cm)	12 (47.24 per 10 cm)	11 (43.31 per 10 cm)
Density	6,400 (237.81 kg/m³)	7,016 (260.70 kg/m³)	6,400 (237.81 kg/m³)
Pile Thickness	0.135" (3.43 mm)	0.118" (3.00 mm)	0.135" (3.43 mm)
Weight	24 oz/yd² (814 g/m²)	23 oz/yd² (780 g/m²)	24 oz/yd² (814 g/m²)
Backing Type	UltraBac® RE, Integra® HP	UltraBac® RE, Integra® HP	UltraBac® RE, Integra® HP
Size	12' 6" width (3.81 m)	12' 6" width (3.81 m)	12' 6" width (3.81 m)
Colors	12	12	12
Packaging	18 3/4" W x 22" L	18 3/4" W x 20" L	18 3/4" W x 20" L
Adhesive	Mannington Ultra Adhesive Mannington Integra 2 Adhesive	Mannington Ultra Adhesive Mannington Integra 2 Adhesive	Mannington Ultra Adhesive Mannington Integra 2 Adhesive
Testing			
Dimensional Stability (Aachen Test)	Passes		
Electrostatic Propensity (AATCC 134)	Less than 3.0 kV		
Flooring Radiant Panel (ASTM E648)	Passes - Class 1 ≥ 0.45 watts/cm²		
Smoke Density (ASTM E662)	Passes ≤ 450		
Methenamine Pill Test (ASTM D2859)	Passes		
Hexapod (ASTM D5252) TARR	3.5 - severe		
Environmental Data			
NSF/ANSI 140 Certification	UltraBac® RE - Gold, Integra® HP - Gold		
Recycled Content	Contains recycled content		
Indoor Air Quality	CRI Green Label Plus Certified		
Product Declarations	Third Party Verified EPD, HPD		
Carbon Offset	105% Cradle to Gate (A1 - A3), visit website for more information		
LEED	May contribute to LEED credits: Building Product Disclosure & Optimization - EPDs; Building Product Disclosure & Optimization - Sourcing Raw Materials; Building Product Disclosure & Optimization - Material Ingredients; IEQc2 -Low Emitting Materials		
mindful MATERIALS	Visit mindfulmaterials.com for current transparency information		
Manufacturing	Calhoun, GA (USA) - ISO 14001 Registered		
Warranty			
	Limited Lifetime Wear & Backing Warranty Limited 15-Year XGUARD® Stain Resistant Warranty Limited 15-Year ColorSafe® Bleach Resistant Warranty		

- Specifications are based on averages from normal manufacturing tolerances. Such variations do not affect product performance.
- Protective chair pads are recommended under office chairs with roller casters to preserve appearance and avoid premature wear.
- As with all quality carpets, slight variation in color may occur from dye lot to dye lot.
- Backing or other materials may be changed without prior notice when shortages occur or when technological advancements provide improved product performance.
- This product is intended solely for use as an indoor floor covering and is not recommended or sold for any other purpose.
- The inherent characteristics of geometric linear patterns can result in double-dark or double-light lines at the seam and to some extent pattern run-off or bias. This is not a manufacturing defect, and as such, should be considered when selecting a modular carpet installation method.
- Please make your final selection from an actual swatch. To order samples, go to manningtoncommercial.com or call 800.241.2262 ext. 6913.

Poetica Collection

Style	Vivaldi (Broadloom)	Whitman (Broadloom)	Yeats 3 (Broadloom)
Construction	Patterned Loop	Tip-Sheared Patterned Loop	Tip-Sheared Patterned Loop
Face Fiber	Type 6,6 Nylon	Type 6,6 Nylon	Tyle 6,6 Nylon
Dye Method	Solution/Yarn	Solution/Yarn	Solution/Yarn
Gauge	5/64 (50.39 per 10 cm)	5/64 (50.39 per 10 cm)	5/64 (50.39 per 10 cm)
Stitches Per Inch	10.83 (42.64 per 10 cm)	10.83 (42.64 per 10 cm)	13 (51.18 per 10 cm)
Density	6,400 (237.81 kg/m³)	5,760 (214.03 kg/m³)	5,760 (214.03 kg/m³)
Pile Thickness	0.135" (3.43 mm)	0.150" (3.81 mm)	0.118" (3.00 mm)
Weight	24 oz/yd² (814 g/m²)	24 oz/yd² (814 g/m²)	23 oz/yd² (780 g/m²)
Backing Type	UltraBac® RE, Integra® HP	UltraBac® RE, Integra® HP	UltraBac® RE, Integra® HP
Size	12' 6" width (3.81 m)	12' 6" width (3.81 m)	12' 6" width (3.81 m)
Colors	12	12	12
Packaging	18 3/4" W x 40 1/2" L	18 3/4" W x 33" L	18 3/4" W x 41 1/2" L
Adhesive	Mannington Ultra Adhesive Mannington Integra 2 Adhesive	Mannington Ultra Adhesive Mannington Integra 2 Adhesive	Mannington Ultra Adhesive Mannington Integra 2 Adhesive
Testing			
Dimensional Stability (Aachen Test)	Passes		
Electrostatic Propensity (AATCC 134)	Less than 3.0 kV		
Flooring Radiant Panel (ASTM E648)	Passes - Class 1 ≥ 0.45 watts/cm²		
Smoke Density (ASTM E662)	Passes ≤ 450		
Methenamine Pill Test (ASTM D2859)	Passes		
Hexapod (ASTM D5252) TARR	3.5 - severe		
Environmental Data			
NSF/ANSI 140 Certification	UltraBac® RE - Gold, Integra® HP - Gold		
Recycled Content	Contains recycled content		
Indoor Air Quality	CRI Green Label Plus Certified		
Product Declarations	Third Party Verified EPD, HPD		
Carbon Offset	105% Cradle to Gate (A1 - A3), visit website for more information		
LEED	May contribute to LEED credits: Building Product Disclosure & Optimization - EPDs; Building Product Disclosure & Optimization - Sourcing Raw Materials; Building Product Disclosure & Optimization - Material Ingredients; IEQc2 -Low Emitting Materials		
mindful MATERIALS	Visit mindfulmaterials.com for current transparency information		
Manufacturing	Calhoun, GA (USA) - ISO 14001 Registered		
Warranty			
	Limited Lifetime Wear & Backing Warranty Limited 15-Year XGUARD® Stain Resistant Warranty Limited 15-Year ColorSafe® Bleach Resistant Warranty		

- Specifications are based on averages from normal manufacturing tolerances. Such variations do not affect product performance.
- Protective chair pads are recommended under office chairs with roller casters to preserve appearance and avoid premature wear.
- As with all quality carpets, slight variation in color may occur from dye lot to dye lot.
- Backing or other materials may be changed without prior notice when shortages occur or when technological advancements provide improved product performance.
- This product is intended solely for use as an indoor floor covering and is not recommended or sold for any other purpose.
- The inherent characteristics of geometric linear patterns can result in double-dark or double-light lines at the seam and to some extent pattern run-off or bias. This is not a manufacturing defect, and as such, should be considered when selecting a modular carpet installation method.
- Please make your final selection from an actual swatch. To order samples, go to manningtoncommercial.com or call 800.241.2262 ext. 6913.