



---

Amtico Active Lines Custom Options

**Mannington**  
COMMERCIAL



## How Do I Order Active Lines Custom Products?

Whether you need a classic neutral, a striking color, or a combination of both, the Active Lines Collection gives you the ability to add the right amount of color and visual texture to your floor with the ability to choose your own custom digitally printed accent colors.

### 1 Choose your size and style

- Size Options: 18" x 18" or 6" x 36"
- Styles: Bend, Crisscross, Grid or Shift

### 2 Choose your base color

- Flash
- Zing
- Zoom
- Pop

### 3 Choose your colors from the Pantone Matching System (PMS)

- Choose the digital overprint color from our selection of PMS color

[Download the Active Lines PMS Color Bank](#)

### Product Information

- Made in the USA
- 40 mil wear layer
- Quantum Guard Elite® Wear Layer & Warranty
- Ceramic Emboss

**Crafted with Purpose®**







Bend - Pop ALB401, Bend - Pop Red ALB404



# Bend

The Bend style incorporates the accent color in a quiet way. Below are examples of our blue accent color digitally printed onto each of the four neutrals.

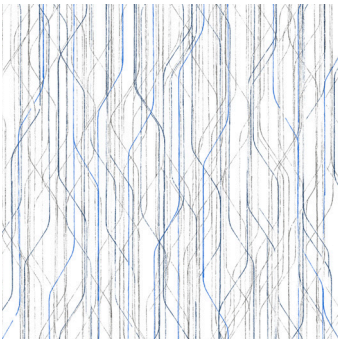
Select Your Base



Bend Flash ALB101

+

Select Your Accent Color



Blue

=

Final Product

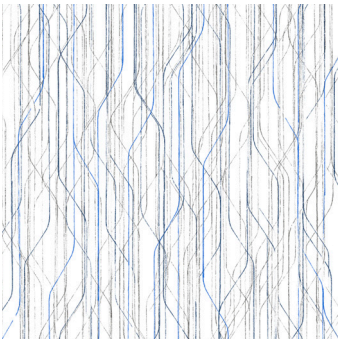


Bend Flash Blue ALB103



Bend Zing ALB201

+



Blue

=

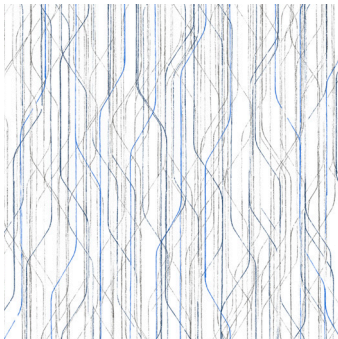


Bend Zing Blue ALB203



Bend Zoom ALB301

+



Blue

=

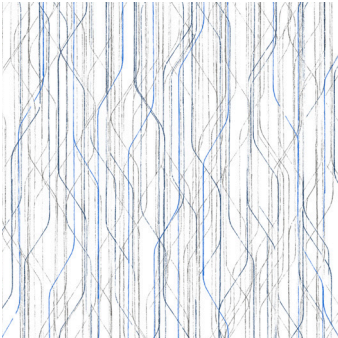


Bend Zoom Blue ALB303



Bend Pop ALB401

+



Blue

=



Bend Pop Blue ALB403



# Bend Custom Color Examples

The digitally printed accent color in the Bend style allows for 2 different colors to weave in and out of each other. Color 1 appears more frequently in the style than color 2, keep this in mind when making selections. Below are examples of custom color accents that show how monochromatic, harmonious, and opposing accent colors display when digitally printed on a Bend neutral style. Keep in mind that the neutral base color will impact the digitally printed color as well.

Choose 2 accent colors from the [Active Lines PMS Color Bank](#).

## Monochromatic Accent Colors



**Bend Flash Neutral Base**

Color 1  
PMS 390

Color 2  
PMS 7495C

## Harmonious Accent Colors

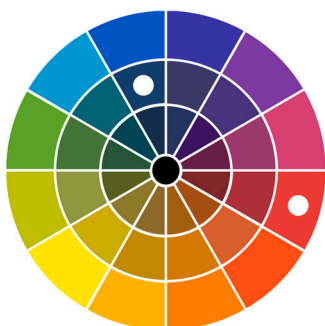


**Bend Flash Neutral Base**

Color 1  
PMS 185C

Color 2  
PMS 234C

## Opposing Accent Colors



**Bend Flash Neutral Base**

Color 1  
PMS 534

Color 2  
PMS 185C





Crisscross - Zoom Charcoal ALC307, Telejector Modular Carpet - Dynasphere 22643



# Crisscross

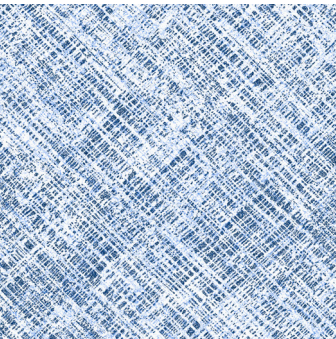
The Crisscross style delivers a bold amount of the accent color for just the right amount of pop in your space. Below are examples of our blue accent color digitally printed onto each of the four neutrals.

Select Your Base



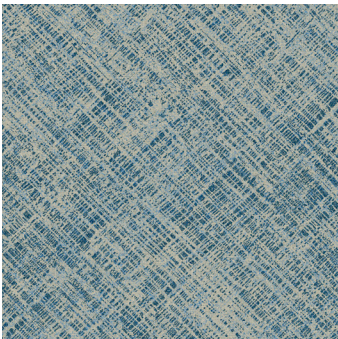
Crisscross Flash ALC101

Select Your Accent Color



Blue

Final Product



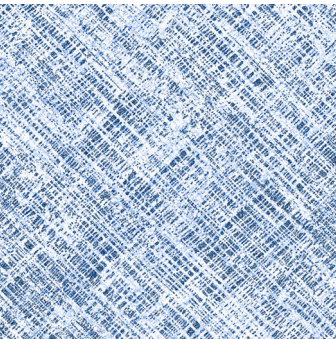
Crisscross Flash Blue ALC103

+

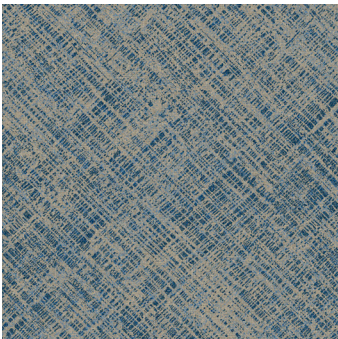
=



Crisscross Zing ALC201



Blue



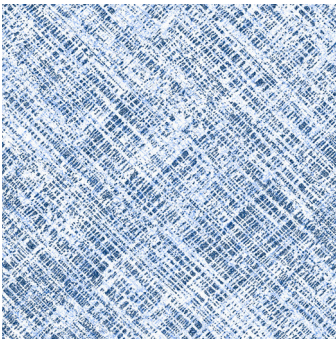
Crisscross Zing Blue ALC203

+

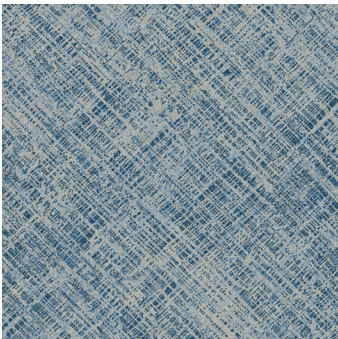
=



Crisscross Zoom ALC301



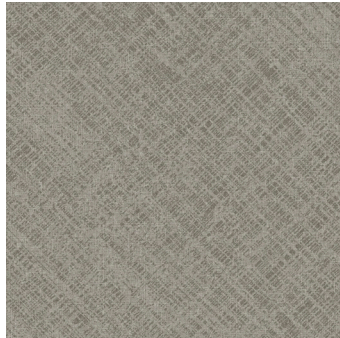
Blue



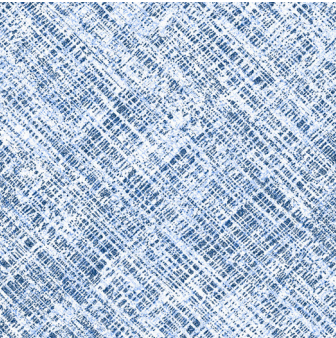
Crisscross Zoom Blue ALC303

+

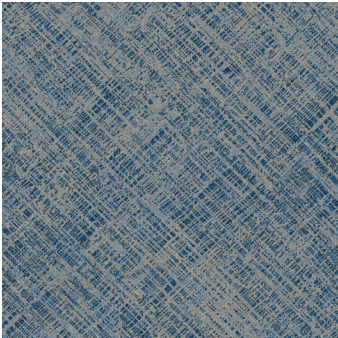
=



Crisscross Pop ALC401



Blue



Crisscross Pop Blue ALC403

+

=

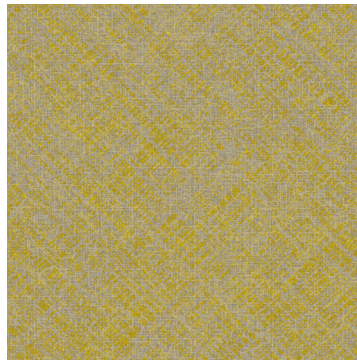


# Crisscross Custom Color Examples

The digitally printed accent color in the Crisscross style allows for 2 distinct colors. Color 1 is bolder and creates more of the style, think of it as the dominant color. Color 2 acts as a softer overall texture, think of it as a highlight. Below are examples of custom color accents that show how monochromatic neutral accent, monochromatic color accent, and harmonious accent colors display when digitally printed on a Crisscross neutral style. Keep in mind that the neutral base color will impact the digitally printed color as well.

Choose 2 accent color from the [Active Lines PMS Color Bank](#).

## Monochromatic Bright Accent Colors

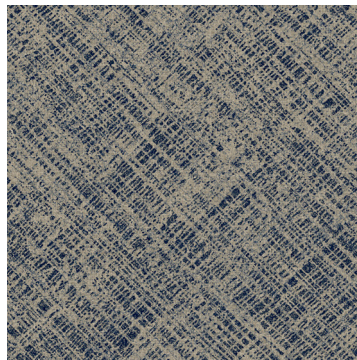


Crisscross Zing Neutral Base

Color 1  
PMS 103C

Color 2  
PMS 102C

## Monochromatic Muted Accent Colors

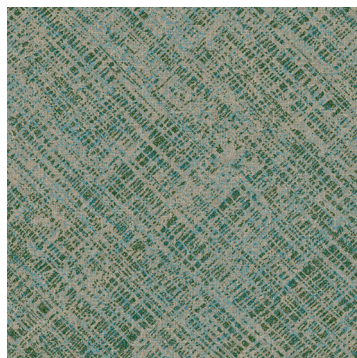


Crisscross Zing Neutral Base

Color 1  
PMS 533C

Color 2  
PMS 534C

## Harmonious Accent Colors



Crisscross Zing Neutral Base

Color 1  
PMS 537C

Color 2  
PMS 639C



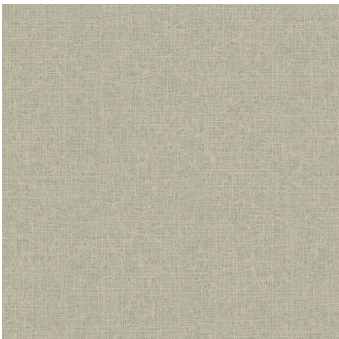




# Grid

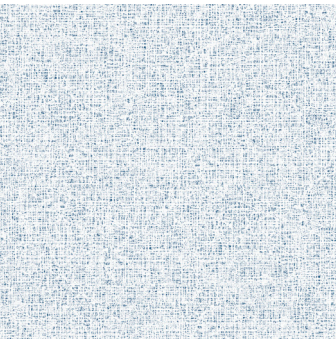
The Grid style incorporates the accent color in a quiet way. Below are examples of our blue accent color digitally printed onto each of the four neutrals.

Select Your Base



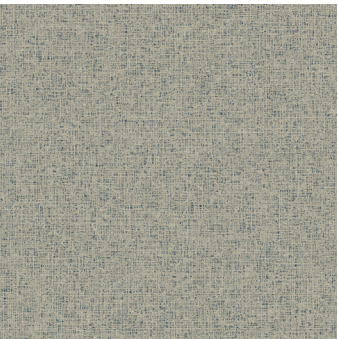
Grid Flash ALG101

Select Your Accent Color

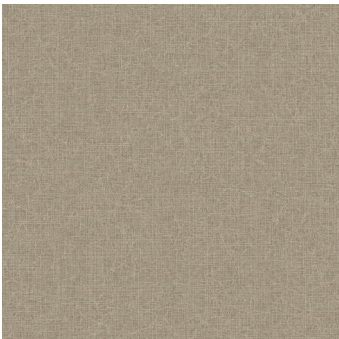


Blue

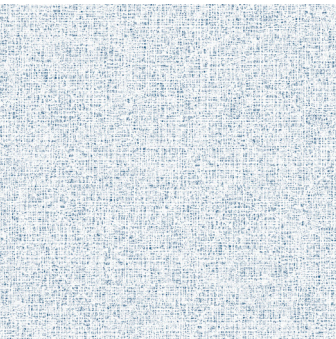
Final Product



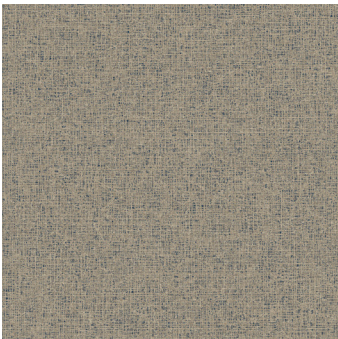
Grid Flash Blue ALG103



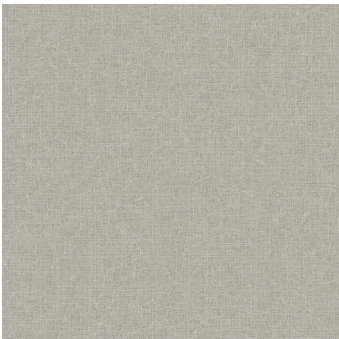
Grid Zing ALG201



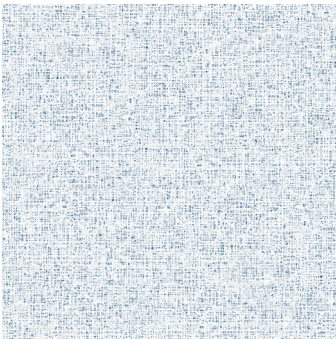
Blue



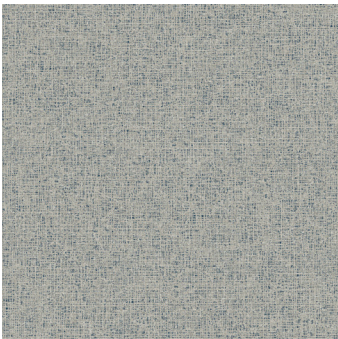
Grid Zing Blue ALG203



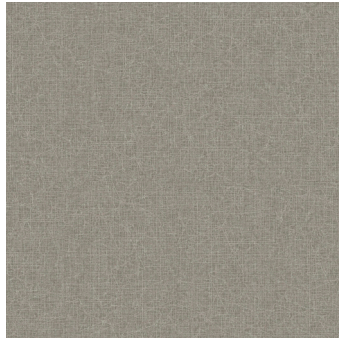
Grid Zoom ALG301



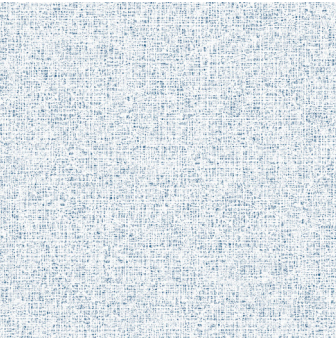
Blue



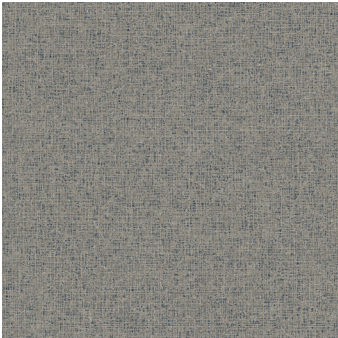
Grid Zoom Blue ALG303



Grid Pop ALG401



Blue



Grid Pop Blue ALG403

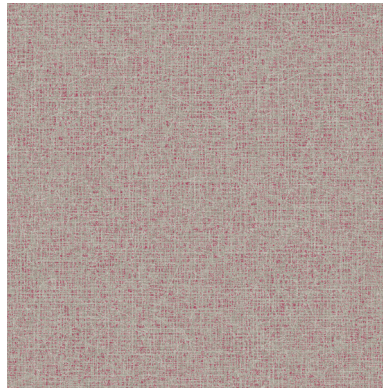


## Grid Custom Color Examples

The digitally printed accent color for the Grid style is a very small dot texture, creating an illusion of an overall color shift. This accent is being printed on top of neutrals, so we suggest using a brighter color than your target in order to achieve maximum impact. Neutral colors can also be used in place of accents. Below are examples of custom color accents that show how a bright, muted or neutral tone digitally printed on the Grid style. Keep in mind that the neutral base color will impact the digitally printed color as well. The Grid style only has one position for custom accent color options.

Choose your accent color from the [Active Lines PMS Color Bank](#).

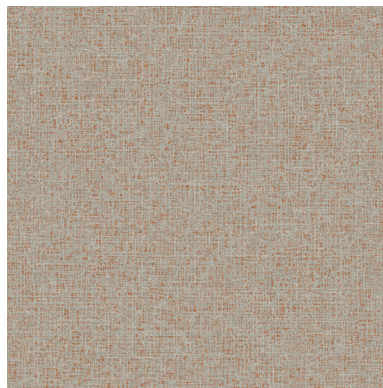
### Bright Accent Color



Grid Zoom Neutral Base



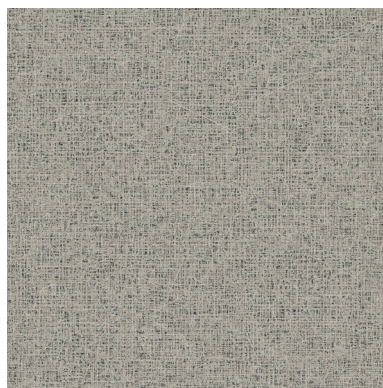
### Muted Accent Color



Grid Zoom Neutral Base



### Neutral Accent Color



Grid Zoom Neutral Base







Shift - Zoom ALS301, Shift - Zoom Blue ALS303; Shift - Zoom Green ALG305



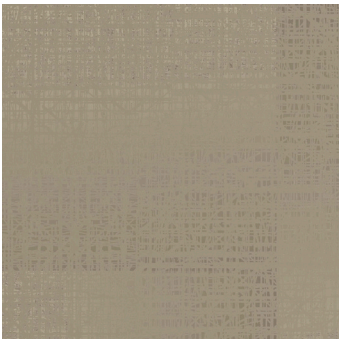
# Shift

The Shift style delivers a bold amount of the accent color for just the right amount of pop in your space. Below are examples of our blue accent color digitally printed onto each of the four neutrals.

Select Your Base



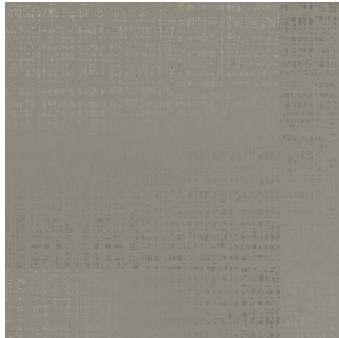
Shift Flash ALS101



Shift Zing ALS201



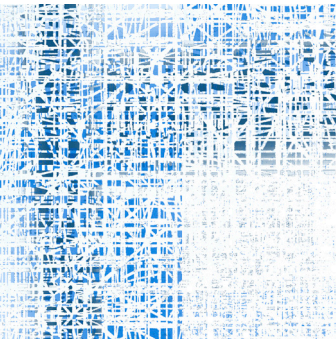
Shift Zoom ALS301



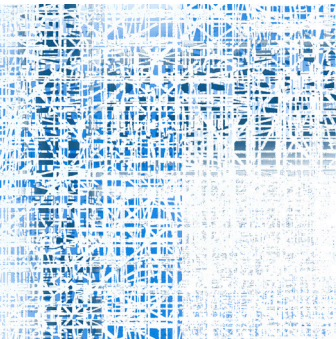
Shift Pop ALS401

+

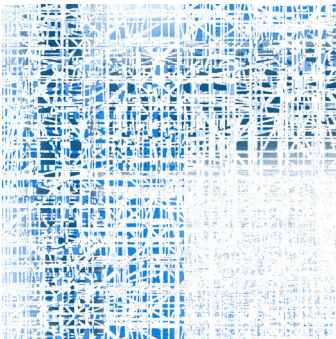
Select Your Accent Color



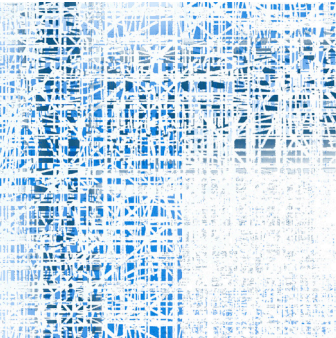
Blue



Blue



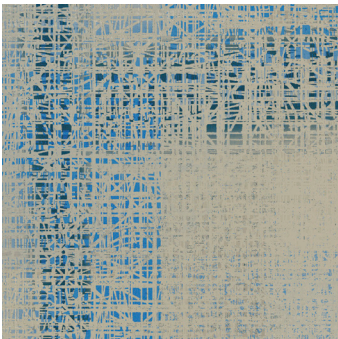
Blue



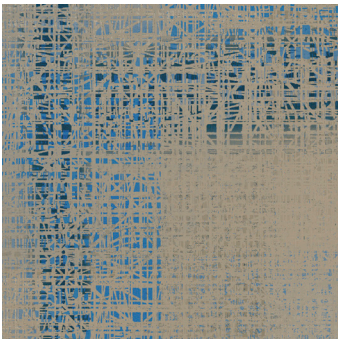
Blue

=

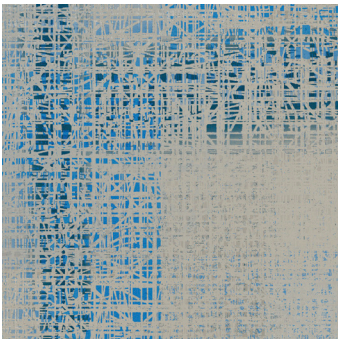
Final Product



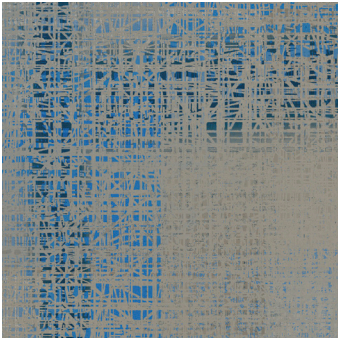
Shift Flash Blue ALS103



Shift Zing Blue ALS203



Shift Zoom Blue ALS303



Shift Pop Blue ALS403

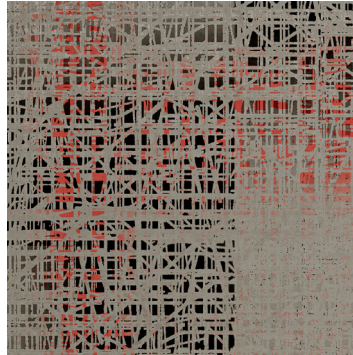


# Shift Custom Color Examples

The digitally printed accent color in the Shift style allows for 2 distinct colors. Color 1 and Color 2 will overlap in some areas. Color 2 covers more area than Color 1, making Color 2 the more dominant color in this style. Below are examples of custom color accents that show how monochromatic, harmonious, and opposing accent colors display when digitally printed on a Shift neutral style. Keep in mind that the neutral base color will impact the digitally printed color as well.

Choose 2 accent colors from the [Active Lines PMS Color Bank](#).

## Monochromatic Accent Colors

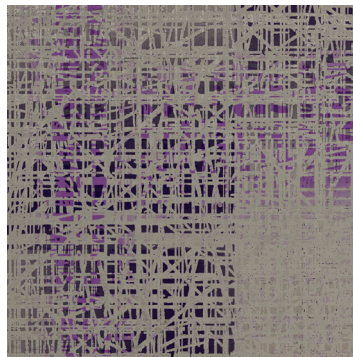


Color 1  
PMS 185C

Color 2  
Process Black

Shift Pop Neutral Base

## Harmonious Accent Colors

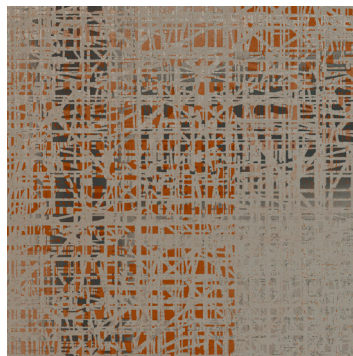


Color 1  
PMS 2593C

Color 2  
PMS 2768C

Shift Pop Neutral Base

## Opposing Accent Colors



Color 1  
PMS 547C

Color 2  
PMS 160C

Shift Pop Neutral Base



