



# Amtico® Active Lines Collection

Style: Crisscross



Flash  
ALC 101



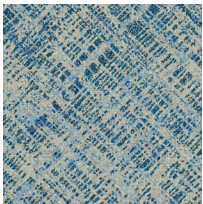
Pop  
ALC 401



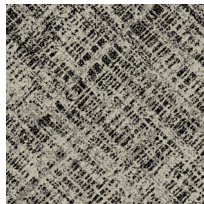
Zing  
ALC 201



Zoom  
ALC 301



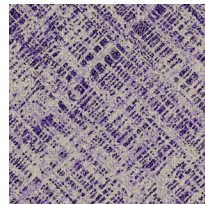
Flash Blue  
ALC 103



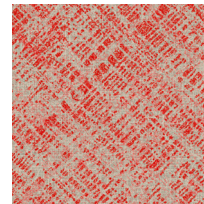
Flash Charcoal  
ALC 107



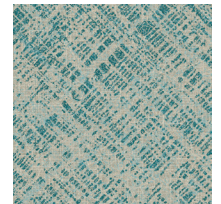
Flash Green  
ALC 105



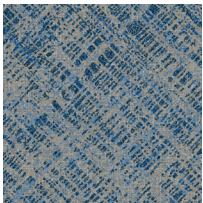
Flash Purple  
ALC 106



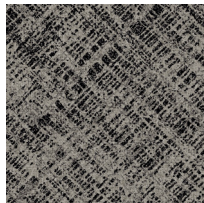
Flash Red  
ALC 104



Flash Teal  
ALC 102



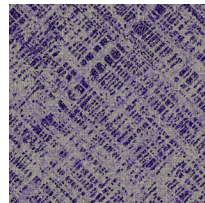
Pop Blue  
ALC 403



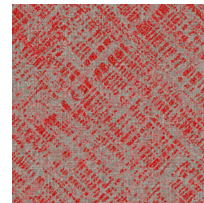
Pop Charcoal  
ALC 407



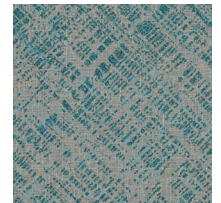
Pop Green  
ALC 405



Pop Purple  
ALC 406



Pop Red  
ALC 404



Pop Teal  
ALC 402

**Construction**.....LVT with Micro-beveled or Unbeveled Edges

**Sizes**.....6" x 36" (152 x 915 mm),  
18" x 18" (457 x 457 mm)

**Total Thickness**.....0.098" (2.5 mm)

**Wear Layer Thickness**...40 mil (1 mm)

**Wear Layer**.....Quantum Guard Elite®

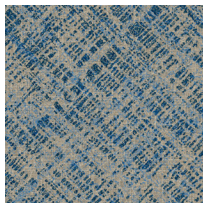
**Sustainability**.....EPD & HPD Verified, FloorScore, mindful MATERIALS

**Warranty**.....Limited 25-Year Commercial,  
Limited 25-Year Quantum Guard Elite® Wear

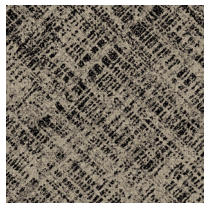
**Price**.....\$\$\$\$

# Amtico® Active Lines Collection Continued

Style: Crisscross



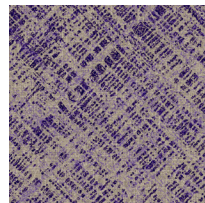
Zing Blue  
ALC 203



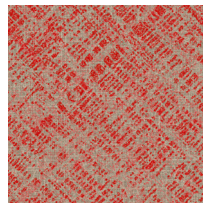
Zing Charcoal  
ALC 207



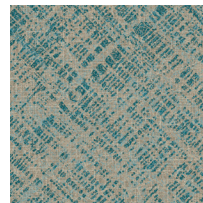
Zing Green  
ALC 205



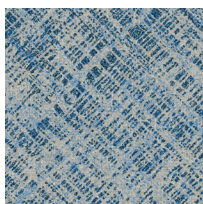
Zing Purple  
ALC 206



Zing Red  
ALC 204



Zing Teal  
ALC 202



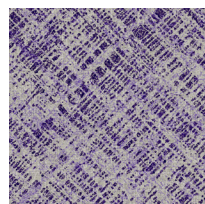
Zoom Blue  
ALC 303



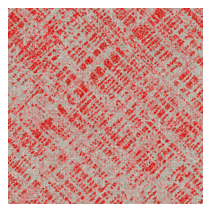
Zoom Charcoal  
ALC 307



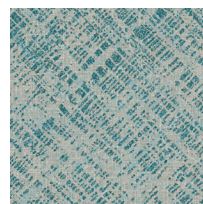
Zoom Green  
ALC 305



Zoom Purple  
ALC 306



Zoom Red  
ALC 304



Zoom Teal  
ALC 302