



Stylist Collection

**Mannington**  
COMMERCIAL





**Cover:** Tulle (Modular) - Sea 35557; **Installation** - Vertical Ashlar  
**Above:** Tulle (Modular) - Sable 42554; **Installation** - Vertical Ashlar





**Watercolor Moire** (Modular) - Sea 35557  
**Installation** - Vertical Ashlar





**Watercolor Moire** (Modular) - Sable 42554  
**Installation** - Vertical Ashlar





**Linen Weave** (Modular) - Sea 35557

**Installation** - Vertical Ashlar\*

\*Front view perspective - viewing carpet installation looking into the grain of the product.





**Linen Weave** (Modular) - Sable 42554

**Installation** - Monolithic\*

\*Front view perspective - viewing carpet installation looking into the grain of the product.





**Linen Weave** (Modular) - Sea 35557

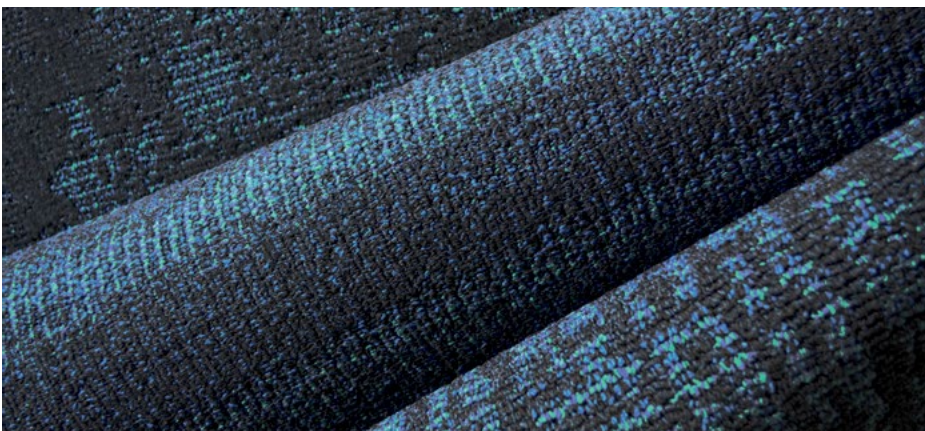
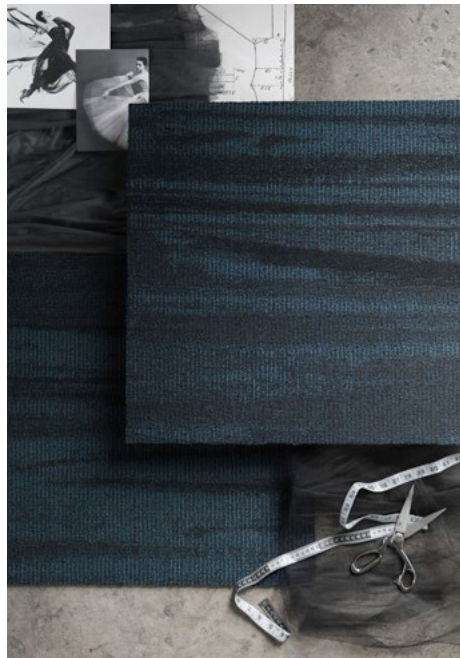
**Installation** - Monolithic\*

\*Side view perspective - viewing carpet installation looking across the grain of the product.



## Express Your Style.

Inspired by couture, classic, and even street fashion, the STYLIST Collection is a study in wardrobing – combining and contrasting unique combinations to create a personal statement for each project. From sophisticated solids and complex texture studies to larger scale statement pieces, the patterns are ideally suited to stand alone or to create endless combinations and arrangements based on the functional needs of your space.





Stylist Collection

Style	Linen Weave (Modular)	Tulle (Modular)	Watercolor Moire (Modular)
Construction	Patterned Loop	Tip-sheared Pattern Loop	Tip-sheared Pattern Loop
Face Fiber	Type 6,6 Nylon	Type 6,6 Nylon	Type 6,6 Nylon
Dye Method	Solution/Yarn	Solution/Yarn	Solution/Yarn
Gauge	5/64 (50.39 per 10 cm)	5/64 (50.39 per 10 cm)	5/64 (50.39 per 10 cm)
Stitches Per Inch	11 (43.31 per 10 cm)	11.66 (45.91 per 10cm)	11.66 (45.91 per 10cm)
Density	6,236 (231.72 kg/m³)	6,272 (233.05 kg/m³)	5,710 (212.17 kg/m³)
Pile Thickness	0.127" (3.23 mm)	0.132" (3.35 mm)	0.145" (3.68 mm)
Weight	22 oz/yd² (746 g/m²)	23 oz/yd² (780 g/m²)	23 oz/yd² (780 g/m²)
Backing Type	Infinity® 2 Modular	Infinity® 2 Modular	Infinity® 2 Modular
Sizes	24" x 24" (60.96 x 60.96 cm)	24" x 24" (60.96 x 60.96 cm)	24" x 24" (60.96 x 60.96 cm)
Colors	9	9	9
Packaging	8 yd² / 18 Tiles	8 yd² / 18 Tiles	8 yd² / 18 Tiles
Adhesive	Infinity 2 Adhesive	Infinity 2 Adhesive	Infinity 2 Adhesive
Installation Method	Monolithic, Vertical Ashlar	Vertical Ashlar	Vertical Ashlar
Testing			
Dimensional Stability (Aachen Test)	Passes		
Electrostatic Propensity (AATCC 134)	Less than 3.0 kV		
Flooring Radiant Panel (ASTM E648)	Passes - Class 1 ≥ 0.45 watts/cm²		
Smoke Density (ASTM E662)	Passes ≤ 450		
Methenamine Pill Test (ASTM D2859)	Passes		
Hexapod (ASTM D5252) TARR	3.5 - severe		
Environmental Data			
NSF/ANSI 140 Certification	Infinity® 2 Modular - Gold		
Recycled Content	Contains recycled content		
Indoor Air Quality	CRI Green Label Plus Certified		
Product Declarations	Third Party Verified EPD, HPD		
Carbon Offset	105% Cradle to Gate (A1 - A3), visit website for more information		
LEED	May contribute to LEED credits: Building Product Disclosure & Optimization - EPDs; Building Product Disclosure & Optimization - Sourcing Raw Materials; Building Product Disclosure & Optimization - Material Ingredients; IEQc2 -Low Emitting Materials		
mindful MATERIALS	Visit mindfulmaterials.com for current transparency information		
Manufacturing	Calhoun, GA (USA) - ISO 14001 Registered		
Warranty			
	Limited Lifetime Wear & Backing Warranty Limited 15-Year XGUARD® Stain Resistant Warranty Limited 15-Year ColorSafe® Bleach Resistant Warranty		

- Specifications are based on averages from normal manufacturing tolerances. Such variations do not affect product performance.
- Protective chair pads are recommended under office chairs with roller casters to preserve appearance and avoid premature wear.
- As with all quality carpets, slight variation in color may occur from dye lot to dye lot.
- Backing or other materials may be changed without prior notice when shortages occur or when technological advancements provide improved product performance.
- This product is intended solely for use as an indoor floor covering and is not recommended or sold for any other purpose.
- The inherent characteristics of geometric linear patterns can result in double-dark or double-light lines at the seam and to some extent pattern run-off or bias. This is not a manufacturing defect, and as such, should be considered when selecting a modular carpet installation method.
- Cut piles, cut and loops, and tip-sheared constructions are not recommended for heavy commercial traffic, corridors or through channeled traffic. Please contact your Mannington representative for information regarding these constructions and your specific end use application.
- Please make your final selection from an actual swatch. To order samples, go to [manningtoncommercial.com](http://manningtoncommercial.com) or call 800.241.2262 ext. 6913.