

**76" sleeper with left-side facing and right-side facing arms** CL-76AA

Single textiles

|                                 |                        |                        |          |
|---------------------------------|------------------------|------------------------|----------|
| <b>Overall Dimensions</b>       | 84.5"w x 32.5"d x 32"h | <b>COM 54"</b>         | 7 yds.   |
| <b>Seat Dimensions</b>          | 76"w x 20"d x 18.5"h   | <b>Cubic Feet</b>      | 57       |
| <b>Top of Arm to Floor</b>      | 24"                    | <b>Shipping Weight</b> | 192 lbs. |
| <b>Arm Width</b>                | 4.25"                  |                        |          |
| <b>Sleep Surface Dimensions</b> | 76"w x 29"d x 3.5"h    |                        |          |



**76" sleeper with left-side facing and right-side facing arms** CL-76AA-MT

Multiple textiles

|                                 |                        |                               |           |
|---------------------------------|------------------------|-------------------------------|-----------|
| <b>Overall Dimensions</b>       | 84.5"w x 32.5"d x 32"h | <b>COM 54" - Seat</b>         | 2.25 yds. |
| <b>Seat Dimensions</b>          | 76"w x 20"d x 18.5"h   | <b>COM 54" - Inside Back</b>  | 2.5 yds.  |
| <b>Top of Arm to Floor</b>      | 24"                    | <b>COM 54" - Outside Back</b> | 2.5 yds.  |
| <b>Arm Width</b>                | 4.25"                  | <b>COM 54" - Arms</b>         | 2 yds.    |
| <b>Sleep Surface Dimensions</b> | 76"w x 29"d x 3.5"h    | <b>Cubic Feet</b>             | 57        |
|                                 |                        | <b>Shipping Weight</b>        | 192 lbs.  |



**80" sleeper with left-side facing and right-side facing arms** CL-80AA

Single textiles

|                                 |                        |                        |          |
|---------------------------------|------------------------|------------------------|----------|
| <b>Overall Dimensions</b>       | 88.5"w x 32.5"d x 32"h | <b>COM 54"</b>         | 7.5 yds. |
| <b>Seat Dimensions</b>          | 80"w x 20"d x 18.5"h   | <b>Cubic Feet</b>      | 60       |
| <b>Top of Arm to Floor</b>      | 24"                    | <b>Shipping Weight</b> | 205 lbs. |
| <b>Arm Width</b>                | 4.25"                  |                        |          |
| <b>Sleep Surface Dimensions</b> | 80"w x 29"d x 3.5"h    |                        |          |



**80" sleeper with left-side facing and right-side facing arms** CL-80AA-MT

Multiple textiles

|                                 |                        |                               |           |
|---------------------------------|------------------------|-------------------------------|-----------|
| <b>Overall Dimensions</b>       | 88.5"w x 32.5"d x 32"h | <b>COM 54" - Seat</b>         | 2.5 yds.  |
| <b>Seat Dimensions</b>          | 80"w x 20"d x 18.5"h   | <b>COM 54" - Inside Back</b>  | 2.75 yds. |
| <b>Top of Arm to Floor</b>      | 24"                    | <b>COM 54" - Outside Back</b> | 2.75 yds. |
| <b>Arm Width</b>                | 4.25"                  | <b>COM 54" - Arms</b>         | 2 yds.    |
| <b>Sleep Surface Dimensions</b> | 80"w x 29"d x 3.5"h    | <b>Cubic Feet</b>             | 60        |
|                                 |                        | <b>Shipping Weight</b>        | 205 lbs.  |



| Standard Features   | Options Available   |
|---|---|
| <ul style="list-style-type: none"> <li>Left-side facing and right-side facing arms are available with resin, 3DL, or solid surface arm caps</li> <li>Available in 76" and 80" sleep surface lengths</li> <li>Spring seat construction</li> <li>360° clean-thru design</li> <li>Cast legs and extruded aluminum frame provide durability and longevity</li> <li>9.5" High base design ensures easy access for floor cleaning and reduces maintenance efforts</li> <li>Casters feature red safety lock to improve visibility for users</li> <li>The mechanism-free design allows easy conversion from seating to sleeping, providing comfort without maintenance issues</li> <li>Sleep surface is upholstered in our exclusive <a href="#">SleepShield</a> polyurethane coating with improved chemical resistance on a four-way stretch polyester weft knitted fabric</li> <li>Provides a breathable, soft, and hygienic sleep surface</li> <li>Unique foam construction exclusive to Offshore</li> <li>Safety feature indicators, including red details on the locking casters and the sleep cushion straps</li> </ul> | <ul style="list-style-type: none"> <li>Resin arm caps are available in Black, Shadow, and Folkstone Grey</li> <li>3DL arm caps are available in any of our standard 3DL finishes</li> <li>Solid surface arm caps are available in Cameo White, Modern White, Medea, and Polaris</li> <li>Dual-locking casters or non-marring glides</li> <li>Casters are available in black or grey</li> <li>The base is available in Bone White, Chalk, Ion, Luster Grey, Oiled Bronze, Onyx, and Stone</li> <li>Integrated power is tamper-resistant with (1) AC outlet and (2) USB-A outlets</li> <li>Power is available in Silver, Deep Space, and Black</li> </ul> |

**76" sleeper with left-side facing arm and right-side facing table CL-76AT**

Single textiles

|                                 |                              |                        |          |
|---------------------------------|------------------------------|------------------------|----------|
| <b>Overall Dimensions</b>       | 92.25"w x 32.5"d x 32"h      | <b>COM 54"</b>         | 6.5 yds. |
| <b>Seat Dimensions</b>          | 76"w x 20"d x 18.5"h         | <b>Cubic Feet</b>      | 62       |
| <b>Top of Arm to Floor</b>      | 24"                          | <b>Shipping Weight</b> | 195 lbs. |
| <b>Arm Width</b>                | 4.25"                        |                        |          |
| <b>Table Dimensions</b>         | 11.625"w x 32.125"d x 13.5"h |                        |          |
| <b>Sleep Surface Dimensions</b> | 76"w x 29"d x 3.5"h          |                        |          |



**76" sleeper with left-side facing arm and right-side facing table CL-76AT-MT**

Multiple textiles

|                                 |                              |                               |           |
|---------------------------------|------------------------------|-------------------------------|-----------|
| <b>Overall Dimensions</b>       | 92.25"w x 32.5"d x 32"h      | <b>COM 54" - Seat</b>         | 2.25 yds. |
| <b>Seat Dimensions</b>          | 76"w x 20"d x 18.5"h         | <b>COM 54" - Inside Back</b>  | 2.5 yds.  |
| <b>Top of Arm to Floor</b>      | 24"                          | <b>COM 54" - Outside Back</b> | 2.5 yds.  |
| <b>Arm Width</b>                | 4.25"                        | <b>COM 54" - Arms</b>         | 1.25 yds. |
| <b>Table Dimensions</b>         | 11.625"w x 32.125"d x 13.5"h | <b>Cubic Feet</b>             | 62        |
| <b>Sleep Surface Dimensions</b> | 76"w x 29"d x 3.5"h          | <b>Shipping Weight</b>        | 195 lbs.  |



**80" sleeper with left-side facing arm and right-side facing table CL-80AT**

Single textiles

|                                 |                              |                        |          |
|---------------------------------|------------------------------|------------------------|----------|
| <b>Overall Dimensions</b>       | 96.25"w x 32.5"d x 32"h      | <b>COM 54"</b>         | 7 yds.   |
| <b>Seat Dimensions</b>          | 80"w x 20"d x 18.5"h         | <b>Cubic Feet</b>      | 65       |
| <b>Top of Arm to Floor</b>      | 24"                          | <b>Shipping Weight</b> | 208 lbs. |
| <b>Arm Width</b>                | 4.25"                        |                        |          |
| <b>Table Dimensions</b>         | 11.625"w x 32.125"d x 13.5"h |                        |          |
| <b>Sleep Surface Dimensions</b> | 80"w x 29"d x 3.5"h          |                        |          |



**80" sleeper with left-side facing arm and right-side facing table CL-80AT-MT**

Multiple textiles

|                                 |                              |                               |           |
|---------------------------------|------------------------------|-------------------------------|-----------|
| <b>Overall Dimensions</b>       | 96.25"w x 32.5"d x 32"h      | <b>COM 54" - Seat</b>         | 2.5 yds.  |
| <b>Seat Dimensions</b>          | 80"w x 20"d x 18.5"h         | <b>COM 54" - Inside Back</b>  | 2.75 yds. |
| <b>Top of Arm to Floor</b>      | 24"                          | <b>COM 54" - Outside Back</b> | 2.75 yds. |
| <b>Arm Width</b>                | 4.25"                        | <b>COM 54" - Arms</b>         | 1.25 yds. |
| <b>Table Dimensions</b>         | 11.625"w x 32.125"d x 13.5"h | <b>Cubic Feet</b>             | 65        |
| <b>Sleep Surface Dimensions</b> | 80"w x 29"d x 3.5"h          | <b>Shipping Weight</b>        | 208 lbs.  |



| Standard Features  | Options Available  |
|--|--|
| <ul style="list-style-type: none"> <li>Left or right-side facing arms are available with resin, 3DL, or solid surface arm caps</li> <li>Left or right-side facing tables are available in 3DL or solid surface</li> <li>Available in 76" and 80" sleep surface lengths</li> <li>Spring seat construction</li> <li>360° clean-thru design</li> <li>Cast legs and extruded aluminum frame provide durability and longevity</li> <li>9.5" High base design ensures easy access for floor cleaning and reduces maintenance efforts</li> <li>Casters feature red safety lock to improve visibility for users</li> <li>The mechanism-free design allows easy conversion from seating to sleeping, providing comfort without maintenance issues</li> <li>Sleep surface is upholstered in our exclusive <a href="#">SleepShield</a> polyurethane coating with improved chemical resistance on a four-way stretch polyester weft knitted fabric</li> <li>Provides a breathable, soft, and hygienic sleep surface</li> <li>Unique foam construction exclusive to Offshore</li> <li>Safety feature indicators, including red details on the locking casters and the sleep cushion straps</li> </ul> | <ul style="list-style-type: none"> <li>Resin arm caps are available in Black, Shadow, and Folkstone Grey</li> <li>3DL arm caps are available in any of our standard 3DL finishes</li> <li>Solid surface arm caps are available in Cameo White, Modern White, Medea, and Polaris</li> <li>3DL end tables are available in any of our standard 3DL finishes</li> <li>Solid surface end tables are available in Cameo White, Modern White, Medea, and Polaris</li> <li>Dual-locking casters or non-marring glides</li> <li>Casters are available in black or grey</li> <li>The base is available in Bone White, Chalk, Ion, Luster Grey, Oiled Bronze, Onyx, and Stone</li> <li>Integrated power is tamper-resistant with (1) AC outlet and (2) USB-A outlets</li> <li>Power is available in Silver, Deep Space, and Black</li> </ul> |

**76" sleepover with left-side facing table and right-side facing arm CL-76TA**

Single textiles

|                                 |                              |                        |          |
|---------------------------------|------------------------------|------------------------|----------|
| <b>Overall Dimensions</b>       | 92.25"w x 32.5"d x 32"h      | <b>COM 54"</b>         | 6.5 yds. |
| <b>Seat Dimensions</b>          | 76"w x 20"d x 18.5"h         | <b>Cubic Feet</b>      | 62       |
| <b>Top of Arm to Floor</b>      | 24"                          | <b>Shipping Weight</b> | 195 lbs. |
| <b>Arm Width</b>                | 4.25"                        |                        |          |
| <b>Table Dimensions</b>         | 11.625"w x 32.125"d x 13.5"h |                        |          |
| <b>Sleep Surface Dimensions</b> | 76"w x 29"d x 3.5"h          |                        |          |



**76" sleepover with left-side facing table and right-side facing arm CL-76TA-MT**

Multiple textiles

|                                 |                              |                               |           |
|---------------------------------|------------------------------|-------------------------------|-----------|
| <b>Overall Dimensions</b>       | 92.25"w x 32.5"d x 32"h      | <b>COM 54" - Seat</b>         | 2.25 yds. |
| <b>Seat Dimensions</b>          | 76"w x 20"d x 18.5"h         | <b>COM 54" - Inside Back</b>  | 2.5 yds.  |
| <b>Top of Arm to Floor</b>      | 24"                          | <b>COM 54" - Outside Back</b> | 2.5 yds.  |
| <b>Arm Width</b>                | 4.25"                        | <b>COM 54" - Arms</b>         | 1.25 yds. |
| <b>Table Dimensions</b>         | 11.625"w x 32.125"d x 13.5"h | <b>Cubic Feet</b>             | 62        |
| <b>Sleep Surface Dimensions</b> | 76"w x 29"d x 3.5"h          | <b>Shipping Weight</b>        | 195 lbs.  |



**80" sleepover with left-side facing table and right-side facing arm CL-80TA**

Single textiles

|                                 |                              |                        |          |
|---------------------------------|------------------------------|------------------------|----------|
| <b>Overall Dimensions</b>       | 96.25"w x 32.5"d x 32"h      | <b>COM 54"</b>         | 7 yds.   |
| <b>Seat Dimensions</b>          | 80"w x 20"d x 18.5"h         | <b>Cubic Feet</b>      | 65       |
| <b>Top of Arm to Floor</b>      | 24"                          | <b>Shipping Weight</b> | 208 lbs. |
| <b>Arm Width</b>                | 4.25"                        |                        |          |
| <b>Table Dimensions</b>         | 11.625"w x 32.125"d x 13.5"h |                        |          |
| <b>Sleep Surface Dimensions</b> | 80"w x 29"d x 3.5"h          |                        |          |



**80" sleepover with left-side facing table and right-side facing arm CL-80TA-MT**

Multiple textiles

|                                 |                              |                               |           |
|---------------------------------|------------------------------|-------------------------------|-----------|
| <b>Overall Dimensions</b>       | 96.25"w x 32.5"d x 32"h      | <b>COM 54" - Seat</b>         | 2.5 yds.  |
| <b>Seat Dimensions</b>          | 80"w x 20"d x 18.5"h         | <b>COM 54" - Inside Back</b>  | 2.75 yds. |
| <b>Top of Arm to Floor</b>      | 24"                          | <b>COM 54" - Outside Back</b> | 2.75 yds. |
| <b>Arm Width</b>                | 4.25"                        | <b>COM 54" - Arms</b>         | 1.25 yds. |
| <b>Table Dimensions</b>         | 11.625"w x 32.125"d x 13.5"h | <b>Cubic Feet</b>             | 65        |
| <b>Sleep Surface Dimensions</b> | 80"w x 29"d x 3.5"h          | <b>Shipping Weight</b>        | 208 lbs.  |



| Standard Features  | Options Available  |
|--|--|
| <ul style="list-style-type: none"> <li>Left or right-side facing arms are available with resin, 3DL, or solid surface arm caps</li> <li>Left or right-side facing tables are available in 3DL or solid surface</li> <li>Available in 76" and 80" sleep surface lengths</li> <li>Spring seat construction</li> <li>360° clean-thru design</li> <li>Cast legs and extruded aluminum frame provide durability and longevity</li> <li>9.5" High base design ensures easy access for floor cleaning and reduces maintenance efforts</li> <li>Casters feature red safety lock to improve visibility for users</li> <li>The mechanism-free design allows easy conversion from seating to sleeping, providing comfort without maintenance issues</li> <li>Sleep surface is upholstered in our exclusive <a href="#">SleepShield</a> polyurethane coating with improved chemical resistance on a four-way stretch polyester weft knitted fabric</li> <li>Provides a breathable, soft, and hygienic sleep surface</li> <li>Unique foam construction exclusive to Offshore</li> <li>Safety feature indicators, including red details on the locking casters and the sleep cushion straps</li> </ul> | <ul style="list-style-type: none"> <li>Resin arm caps are available in Black, Shadow, and Folkstone Grey</li> <li>3DL arm caps are available in any of our standard 3DL finishes</li> <li>Solid surface arm caps are available in Cameo White, Modern White, Medea, and Polaris</li> <li>3DL end tables are available in any of our standard 3DL finishes</li> <li>Solid surface end tables are available in Cameo White, Modern White, Medea, and Polaris</li> <li>Dual-locking casters or non-marring glides</li> <li>Casters are available in black or grey</li> <li>The base is available in Bone White, Chalk, Ion, Luster Grey, Oiled Bronze, Onyx, and Stone</li> <li>Integrated power is tamper-resistant with (1) AC outlet and (2) USB-A outlets</li> <li>Power is available in Silver, Deep Space, and Black</li> </ul> |

**76" sleepover with left-side facing table and right-side facing table CL-76TT**

Single textiles

|                                 |                              |                        |          |
|---------------------------------|------------------------------|------------------------|----------|
| <b>Overall Dimensions</b>       | 92.25"w x 32.5"d x 32"h      | <b>COM 54"</b>         | 6.5 yds. |
| <b>Seat Dimensions</b>          | 76"w x 20"d x 18.5"h         | <b>Cubic Feet</b>      | 67       |
| <b>Table Dimensions</b>         | 11.625"w x 32.125"d x 13.5"h | <b>Shipping Weight</b> | 195 lbs. |
| <b>Sleep Surface Dimensions</b> | 76"w x 29"d x 3.5"h          |                        |          |



**76" sleepover with left-side facing table and right-side facing table CL-76TT-MT**

Multiple textiles

|                                 |                              |                               |           |
|---------------------------------|------------------------------|-------------------------------|-----------|
| <b>Overall Dimensions</b>       | 92.25"w x 32.5"d x 32"h      | <b>COM 54" - Seat</b>         | 2.25 yds. |
| <b>Seat Dimensions</b>          | 76"w x 20"d x 18.5"h         | <b>COM 54" - Inside Back</b>  | 2.5 yds.  |
| <b>Top of Table to Floor</b>    | 13.5"                        | <b>COM 54" - Outside Back</b> | 2.5 yds.  |
| <b>Table Dimensions</b>         | 11.625"w x 32.125"d x 13.5"h | <b>COM 54" - Arms</b>         | 1.25 yds. |
| <b>Sleep Surface Dimensions</b> | 76"w x 29"d x 3.5"h          | <b>Cubic Feet</b>             | 67        |
|                                 |                              | <b>Shipping Weight</b>        | 195 lbs.  |



**80" sleepover with left-side facing table and right-side facing table CL-80TT**

Single textiles

|                                 |                              |                        |          |
|---------------------------------|------------------------------|------------------------|----------|
| <b>Overall Dimensions</b>       | 96.25"w x 32.5"d x 32"h      | <b>COM 54"</b>         | 7 yds.   |
| <b>Seat Dimensions</b>          | 80"w x 20"d x 18.5"h         | <b>Cubic Feet</b>      | 70       |
| <b>Top of Table to Floor</b>    | 13.5"                        | <b>Shipping Weight</b> | 208 lbs. |
| <b>Table Dimensions</b>         | 11.625"w x 32.125"d x 13.5"h |                        |          |
| <b>Sleep Surface Dimensions</b> | 80"w x 29"d x 3.5"h          |                        |          |



**80" sleepover with left-side facing table and right-side facing table CL-80TT-MT**

Multiple textiles

|                                 |                              |                               |           |
|---------------------------------|------------------------------|-------------------------------|-----------|
| <b>Overall Dimensions</b>       | 96.25"w x 32.5"d x 32"h      | <b>COM 54" - Seat</b>         | 2.5 yds.  |
| <b>Seat Dimensions</b>          | 80"w x 20"d x 18.5"h         | <b>COM 54" - Inside Back</b>  | 2.75 yds. |
| <b>Top of Table to Floor</b>    | 13.5"                        | <b>COM 54" - Outside Back</b> | 2.75 yds. |
| <b>Table Dimensions</b>         | 11.625"w x 32.125"d x 13.5"h | <b>COM 54" - Arms</b>         | 1.25 yds. |
| <b>Sleep Surface Dimensions</b> | 80"w x 29"d x 3.5"h          | <b>Cubic Feet</b>             | 70        |
|                                 |                              | <b>Shipping Weight</b>        | 208 lbs.  |



| Standard Features  | Options Available  |
|--|--|
| <ul style="list-style-type: none"> <li>Left and right-side facing tables are available in 3DL or solid surface</li> <li>Available in 76" and 80" sleep surface lengths</li> <li>Spring seat construction</li> <li>360° clean-thru design</li> <li>Cast legs and extruded aluminum frame provide durability and longevity</li> <li>9.5" High base design ensures easy access for floor cleaning and reduces maintenance efforts</li> <li>Casters feature red safety lock to improve visibility for users</li> <li>The mechanism-free design allows easy conversion from seating to sleeping, providing comfort without maintenance issues</li> <li>Sleep surface is upholstered in our exclusive <a href="#">SleepShield</a> polyurethane coating with improved chemical resistance on a four-way stretch polyester weft knitted fabric</li> <li>Provides a breathable, soft, and hygienic sleep surface</li> <li>Unique foam construction exclusive to Offshore</li> <li>Safety feature indicators, including red details on the locking casters and the sleep cushion straps</li> </ul> | <ul style="list-style-type: none"> <li>3DL end tables are available in any of our standard 3DL finishes</li> <li>Solid surface end tables are available in Cameo White, Modern White, Medea, and Polaris</li> <li>Dual-locking casters or non-marring glides</li> <li>Casters are available in black or grey</li> <li>The base is available in Bone White, Chalk, Ion, Luster Grey, Oiled Bronze, Onyx, and Stone</li> <li>Integrated power is tamper-resistant with (1) AC outlet and (2) USB-A outlets</li> <li>Power is available in Silver, Deep Space, and Black</li> </ul> |

**76" sleeper with left-side facing arm and right-side facing cubby CL-76AC**

Single textiles

|                          |                         |                 |          |
|--------------------------|-------------------------|-----------------|----------|
| Overall Dimensions       | 92.25"w x 32.5"d x 32"h | COM 54"         | 6.5 yds. |
| Seat Dimensions          | 76"w x 20"d x 18.5"h    | Cubic Feet      | 62       |
| Top of Arm to Floor      | 24"                     | Shipping Weight | 265 lbs. |
| Arm Width                | 4.25"                   |                 |          |
| Cubby Overall Dimensions | 12"w x 32.5"d x 24.5"h  |                 |          |
| Top of Cubby to Floor    | 24.5"                   |                 |          |
| Bottom of Cubby to Floor | 13.5"                   |                 |          |
| Sleep Surface Dimensions | 76"w x 29"d x 3.5"h     |                 |          |



**76" sleeper with left-side facing arm and right-side facing cubby CL-76AC-MT**

Multiple textiles

|                          |                         |                        |           |
|--------------------------|-------------------------|------------------------|-----------|
| Overall Dimensions       | 92.25"w x 32.5"d x 32"h | COM 54" - Seat         | 2.25 yds. |
| Seat Dimensions          | 76"w x 20"d x 18.5"h    | COM 54" - Inside Back  | 2.5 yds.  |
| Top of Arm to Floor      | 24"                     | COM 54" - Outside Back | 2.5 yds.  |
| Arm Width                | 4.25"                   | COM 54" - Arms         | 1.25 yds. |
| Cubby Overall Dimensions | 12"w x 32.5"d x 24.5"h  | Cubic Feet             | 62        |
| Top of Cubby to Floor    | 24.5"                   | Shipping Weight        | 265 lbs.  |
| Bottom of Cubby to Floor | 13.5"                   |                        |           |
| Sleep Surface Dimensions | 76"w x 29"d x 3.5"h     |                        |           |



**80" sleeper with left-side facing arm and right-side facing cubby CL-80AC**

Single textiles

|                          |                         |                 |          |
|--------------------------|-------------------------|-----------------|----------|
| Overall Dimensions       | 96.25"w x 32.5"d x 32"h | COM 54"         | 7 yds.   |
| Seat Dimensions          | 80"w x 20"d x 18.5"h    | Cubic Feet      | 65       |
| Top of Arm to Floor      | 24"                     | Shipping Weight | 278 lbs. |
| Arm Width                | 4.25"                   |                 |          |
| Cubby Overall Dimensions | 12"w x 32.5"d x 24.5"h  |                 |          |
| Top of Cubby to Floor    | 24.5"                   |                 |          |
| Bottom of Cubby to Floor | 13.5"                   |                 |          |
| Sleep Surface Dimensions | 80"w x 29"d x 3.5"h     |                 |          |



**80" sleeper with left-side facing arm and right-side facing cubby CL-80AC-MT**

Multiple textiles

|                          |                         |                        |           |
|--------------------------|-------------------------|------------------------|-----------|
| Overall Dimensions       | 96.25"w x 32.5"d x 32"h | COM 54" - Seat         | 2.25 yds. |
| Seat Dimensions          | 80"w x 20"d x 18.5"h    | COM 54" - Inside Back  | 2.75 yds. |
| Top of Arm to Floor      | 24"                     | COM 54" - Outside Back | 2.75 yds. |
| Arm Width                | 4.25"                   | COM 54" - Arms         | 1.25 yds. |
| Cubby Overall Dimensions | 12"w x 32.5"d x 24.5"h  | Cubic Feet             | 65        |
| Top of Cubby to Floor    | 24.5"                   | Shipping Weight        | 278 lbs.  |
| Bottom of Cubby to Floor | 13.5"                   |                        |           |
| Sleep Surface Dimensions | 80"w x 29"d x 3.5"h     |                        |           |



| Standard Features  | Options Available   |
|--|---|
| <ul style="list-style-type: none"> <li>Left or right-side facing arms are available with resin, 3DL, or solid surface arm caps</li> <li>Left or right-side facing storage cubby surfaces are available in 3DL or solid surface</li> <li>Available in 76" and 80" sleep surface lengths</li> <li>Spring seat construction</li> <li>360° clean-thru design</li> <li>Cast legs and extruded aluminum frame provide durability and longevity</li> <li>9.5" High base design ensures easy access for floor cleaning and reduces maintenance efforts</li> <li>Casters feature red safety lock to improve visibility for users</li> <li>The mechanism-free design allows easy conversion from seating to sleeping, providing comfort without maintenance issues</li> <li>Sleep surface is upholstered in our exclusive <a href="#">SleepShield</a> polyurethane coating with improved chemical resistance on a four-way stretch polyester weft knitted fabric</li> <li>Provides a breathable, soft, and hygienic sleep surface</li> <li>Unique foam construction exclusive to Offshore</li> <li>Safety feature indicators, including red details on the locking casters and the sleep cushion straps</li> </ul> | <ul style="list-style-type: none"> <li>Resin arm caps are available in Black, Shadow, and Folkstone Grey</li> <li>3DL arm caps are available in any of our standard 3DL finishes</li> <li>Solid surface arm caps are available in Cameo White, Modern White, Medea, and Polaris</li> <li>Storage cubbies are available with either a partially or fully covered top</li> <li>The top portion is available with a spill groove</li> <li>Optional coat rack placed at the back of the storage cubby</li> <li>Coat rack is available in Bone White, Chalk, Ion, Luster Grey, Oiled Bronze, Onyx, and Stone</li> <li>Dual-locking casters or non-marring glides</li> <li>Casters are available in black or grey</li> <li>The base is available in Bone White, Chalk, Ion, Luster Grey, Oiled Bronze, Onyx, and Stone</li> <li>Integrated power is tamper-resistant with (1) AC outlet and (2) USB-A outlets</li> <li>Power is available in Silver, Deep Space, and Black</li> </ul> |

**76" sleeper with left-side facing cubby and right-side facing arm CL-76CA**

Single textiles

|                          |                         |                 |          |
|--------------------------|-------------------------|-----------------|----------|
| Overall Dimensions       | 92.25"w x 32.5"d x 32"h | COM 54"         | 6.5 yds. |
| Seat Dimensions          | 76"w x 20"d x 18.5"h    | Cubic Feet      | 62       |
| Top of Arm to Floor      | 24"                     | Shipping Weight | 265 lbs. |
| Arm Width                | 4.25"                   |                 |          |
| Cubby Overall Dimensions | 12"w x 32.5"d x 24.5"h  |                 |          |
| Top of Cubby to Floor    | 24.5"                   |                 |          |
| Bottom of Cubby to Floor | 13.5"                   |                 |          |
| Sleep Surface Dimensions | 76"w x 29"d x 3.5"h     |                 |          |



**76" sleeper with left-side facing cubby and right-side facing arm CL-76CA-MT**

Multiple textiles

|                          |                         |                        |           |
|--------------------------|-------------------------|------------------------|-----------|
| Overall Dimensions       | 92.25"w x 32.5"d x 32"h | COM 54" - Seat         | 2.25 yds. |
| Seat Dimensions          | 76"w x 20"d x 18.5"h    | COM 54" - Inside Back  | 2.5 yds.  |
| Top of Arm to Floor      | 24"                     | COM 54" - Outside Back | 2.5 yds.  |
| Arm Width                | 4.25"                   | COM 54" - Arms         | 1.25 yds. |
| Cubby Overall Dimensions | 12"w x 32.5"d x 24.5"h  | Shipping Weight        | 265 lbs.  |
| Top of Cubby to Floor    | 24.5"                   |                        |           |
| Bottom of Cubby to Floor | 13.5"                   |                        |           |
| Sleep Surface Dimensions | 76"w x 29"d x 3.5"h     |                        |           |



**80" sleeper with left-side facing cubby and right-side facing arm CL-80CA**

Single textiles

|                          |                         |                 |          |
|--------------------------|-------------------------|-----------------|----------|
| Overall Dimensions       | 96.25"w x 32.5"d x 32"h | COM 54"         | 7 yds.   |
| Seat Dimensions          | 80"w x 20"d x 18.5"h    | Cubic Feet      | 65       |
| Top of Arm to Floor      | 24"                     | Shipping Weight | 278 lbs. |
| Arm Width                | 4.25"                   |                 |          |
| Cubby Overall Dimensions | 12"w x 32.5"d x 24.5"h  |                 |          |
| Top of Cubby to Floor    | 24.5"                   |                 |          |
| Bottom of Cubby to Floor | 13.5"                   |                 |          |
| Sleep Surface Dimensions | 80"w x 29"d x 3.5"h     |                 |          |



**80" sleeper with left-side facing cubby and right-side facing arm CL-80CA-MT**

Multiple textiles

|                          |                         |                        |           |
|--------------------------|-------------------------|------------------------|-----------|
| Overall Dimensions       | 96.25"w x 32.5"d x 32"h | COM 54" - Seat         | 2.25 yds. |
| Seat Dimensions          | 80"w x 20"d x 18.5"h    | COM 54" - Inside Back  | 2.75 yds. |
| Top of Arm to Floor      | 24"                     | COM 54" - Outside Back | 2.75 yds. |
| Arm Width                | 4.25"                   | COM 54" - Arms         | 1.25 yds. |
| Cubby Overall Dimensions | 12"w x 32.5"d x 24.5"h  | Cubic Feet             | 65        |
| Top of Cubby to Floor    | 24.5"                   | Shipping Weight        | 278 lbs.  |
| Bottom of Cubby to Floor | 13.5"                   |                        |           |
| Sleep Surface Dimensions | 80"w x 29"d x 3.5"h     |                        |           |



| Standard Features  | Options Available   |
|--|---|
| <ul style="list-style-type: none"> <li>Left or right-side facing arms are available with resin, 3DL, or solid surface arm caps</li> <li>Left or right-side facing storage cubby surfaces are available in 3DL or solid surface</li> <li>Available in 76" and 80" sleep surface lengths</li> <li>Spring seat construction</li> <li>360° clean-thru design</li> <li>Cast legs and extruded aluminum frame provide durability and longevity</li> <li>9.5" High base design ensures easy access for floor cleaning and reduces maintenance efforts</li> <li>Casters feature red safety lock to improve visibility for users</li> <li>The mechanism-free design allows easy conversion from seating to sleeping, providing comfort without maintenance issues</li> <li>Sleep surface is upholstered in our exclusive <a href="#">SleepShield</a> polyurethane coating with improved chemical resistance on a four-way stretch polyester weft knitted fabric</li> <li>Provides a breathable, soft, and hygienic sleep surface</li> <li>Unique foam construction exclusive to Offshore</li> <li>Safety feature indicators, including red details on the locking casters and the sleep cushion straps</li> </ul> | <ul style="list-style-type: none"> <li>Resin arm caps are available in Black, Shadow, and Folkstone Grey</li> <li>3DL arm caps are available in any of our standard 3DL finishes</li> <li>Solid surface arm caps are available in Cameo White, Modern White, Medea, and Polaris</li> <li>Storage cubbies are available with either a partially or fully covered top</li> <li>The top portion is available with a spill groove</li> <li>Optional coat rack placed at the back of the storage cubby</li> <li>Coat rack is available in Bone White, Chalk, Ion, Luster Grey, Oiled Bronze, Onyx, and Stone</li> <li>Dual-locking casters or non-marring glides</li> <li>Casters are available in black or grey</li> <li>The base is available in Bone White, Chalk, Ion, Luster Grey, Oiled Bronze, Onyx, and Stone</li> <li>Integrated power is tamper-resistant with (1) AC outlet and (2) USB-A outlets</li> <li>Power is available in Silver, Deep Space, and Black</li> </ul> |

**76" sleeper with left-side facing table and right-side facing cubby CL-76TC**

Single textiles

|                                 |                              |                        |          |
|---------------------------------|------------------------------|------------------------|----------|
| <b>Overall Dimensions</b>       | 100"w x 32.5"d x 32"h        | <b>COM 54"</b>         | 6.5 yds. |
| <b>Seat Dimensions</b>          | 76"w x 20"d x 18.5"h         | <b>Cubic Feet</b>      | 67       |
| <b>Table Dimensions</b>         | 11.625"w x 32.125"d x 13.5"h | <b>Shipping Weight</b> | 265 lbs. |
| <b>Cubby Overall Dimensions</b> | 12"w x 32.5"d x 24.5"h       |                        |          |
| <b>Top of Cubby to Floor</b>    | 24.5"                        |                        |          |
| <b>Bottom of Cubby to Floor</b> | 13.5"                        |                        |          |
| <b>Sleep Surface Dimensions</b> | 76"w x 29"d x 3.5"h          |                        |          |



**76" sleeper with left-side facing table and right-side facing cubby CL-76TC-MT**

Multiple textiles

|                                 |                              |                               |           |
|---------------------------------|------------------------------|-------------------------------|-----------|
| <b>Overall Dimensions</b>       | 100"w x 32.5"d x 32"h        | <b>COM 54" - Seat</b>         | 2.25 yds. |
| <b>Seat Dimensions</b>          | 76"w x 20"d x 18.5"h         | <b>COM 54" - Inside Back</b>  | 2.5 yds.  |
| <b>Table Dimensions</b>         | 11.625"w x 32.125"d x 13.5"h | <b>COM 54" - Outside Back</b> | 2.5 yds.  |
| <b>Cubby Overall Dimensions</b> | 12"w x 32.5"d x 24.5"h       | <b>Cubic Feet</b>             | 67        |
| <b>Top of Cubby to Floor</b>    | 24.5"                        | <b>Shipping Weight</b>        | 265 lbs.  |
| <b>Bottom of Cubby to Floor</b> | 13.5"                        |                               |           |
| <b>Sleep Surface Dimensions</b> | 76"w x 29"d x 3.5"h          |                               |           |



**80" sleeper with left-side facing table and right-side facing cubby CL-80TC**

Single textiles

|                                 |                              |                        |          |
|---------------------------------|------------------------------|------------------------|----------|
| <b>Overall Dimensions</b>       | 104"w x 32.5"d x 32"h        | <b>COM 54"</b>         | 7 yds.   |
| <b>Seat Dimensions</b>          | 80"w x 20"d x 18.5"h         | <b>Cubic Feet</b>      | 70       |
| <b>Table Dimensions</b>         | 11.625"w x 32.125"d x 13.5"h | <b>Shipping Weight</b> | 278 lbs. |
| <b>Cubby Overall Dimensions</b> | 12"w x 32.5"d x 24.5"h       |                        |          |
| <b>Top of Cubby to Floor</b>    | 24.5"                        |                        |          |
| <b>Bottom of Cubby to Floor</b> | 13.5"                        |                        |          |
| <b>Sleep Surface Dimensions</b> | 80"w x 29"d x 3.5"h          |                        |          |



**80" sleeper with left-side facing table and right-side facing cubby CL-80TC-MT**

Multiple textiles

|                                 |                              |                               |           |
|---------------------------------|------------------------------|-------------------------------|-----------|
| <b>Overall Dimensions</b>       | 104"w x 32.5"d x 32"h        | <b>COM 54" - Seat</b>         | 2.25 yds. |
| <b>Seat Dimensions</b>          | 80"w x 20"d x 18.5"h         | <b>COM 54" - Inside Back</b>  | 2.75 yds. |
| <b>Table Dimensions</b>         | 11.625"w x 32.125"d x 13.5"h | <b>COM 54" - Outside Back</b> | 2.75 yds. |
| <b>Cubby Overall Dimensions</b> | 12"w x 32.5"d x 24.5"h       | <b>Cubic Feet</b>             | 70        |
| <b>Top of Cubby to Floor</b>    | 24.5"                        | <b>Shipping Weight</b>        | 278 lbs.  |
| <b>Bottom of Cubby to Floor</b> | 13.5"                        |                               |           |
| <b>Sleep Surface Dimensions</b> | 80"w x 29"d x 3.5"h          |                               |           |



| Standard Features   | Options Available  |
|---|--|
| <ul style="list-style-type: none"> <li>Left or right-side facing tables are available in 3DL or solid surface</li> <li>Left or right-side facing storage cubby surfaces are available in 3DL or solid surface</li> <li>Available in 76" and 80" sleep surface lengths</li> <li>Spring seat construction</li> <li>360° clean-thru design</li> <li>Cast legs and extruded aluminum frame provide durability and longevity</li> <li>9.5" High base design ensures easy access for floor cleaning and reduces maintenance efforts</li> <li>Casters feature red safety lock to improve visibility for users</li> <li>The mechanism-free design allows easy conversion from seating to sleeping, providing comfort without maintenance issues</li> <li>Sleep surface is upholstered in our exclusive <a href="#">SleepShield</a> polyurethane coating with improved chemical resistance on a four-way stretch polyester weft knitted fabric</li> <li>Provides a breathable, soft, and hygienic sleep surface</li> <li>Unique foam construction exclusive to Offshore</li> <li>Safety feature indicators, including red details on the locking casters and the sleep cushion straps</li> </ul> | <ul style="list-style-type: none"> <li>3DL end tables are available in any of our standard 3DL finishes</li> <li>Solid surface end tables are available in Cameo White, Modern White, Medea, and Polaris</li> <li>Storage cubbies are available with either a partially or fully covered top</li> <li>The top portion is available with a spill groove</li> <li>Optional coat rack placed at the back of the storage cubby</li> <li>Coat rack is available in Bone White, Chalk, Ion, Luster Grey, Oiled Bronze, Onyx, and Stone</li> <li>Dual-locking casters or non-marring glides</li> <li>Casters are available in black or grey</li> <li>The base is available in Bone White, Chalk, Ion, Luster Grey, Oiled Bronze, Onyx, and Stone</li> <li>Integrated power is tamper-resistant with (1) AC outlet and (2) USB-A outlets</li> <li>Power is available in Silver, Deep Space, and Black</li> </ul> |

**76" sleepover with left-side facing cubby and right-side facing table CL-76CT**

Single textiles

|                                 |                              |                        |          |
|---------------------------------|------------------------------|------------------------|----------|
| <b>Overall Dimensions</b>       | 100"w x 32.5"d x 32"h        | <b>COM 54"</b>         | 6.5 yds. |
| <b>Seat Dimensions</b>          | 76"w x 20"d x 18.5"h         | <b>Cubic Feet</b>      | 67       |
| <b>Table Dimensions</b>         | 11.625"w x 32.125"d x 13.5"h | <b>Shipping Weight</b> | 265 lbs. |
| <b>Cubby Overall Dimensions</b> | 12"w x 32.5"d x 24.5"h       |                        |          |
| <b>Top of Cubby to Floor</b>    | 24.5"                        |                        |          |
| <b>Bottom of Cubby to Floor</b> | 13.5"                        |                        |          |
| <b>Sleep Surface Dimensions</b> | 76"w x 29"d x 3.5"h          |                        |          |



**76" sleepover with left-side facing cubby and right-side facing table CL-76CT-MT**

Multiple textiles

|                                 |                              |                               |           |
|---------------------------------|------------------------------|-------------------------------|-----------|
| <b>Overall Dimensions</b>       | 100"w x 32.5"d x 32"h        | <b>COM 54" - Seat</b>         | 2.25 yds. |
| <b>Seat Dimensions</b>          | 76"w x 20"d x 18.5"h         | <b>COM 54" - Inside Back</b>  | 2.5 yds.  |
| <b>Table Dimensions</b>         | 11.625"w x 32.125"d x 13.5"h | <b>COM 54" - Outside Back</b> | 2.5 yds.  |
| <b>Cubby Overall Dimensions</b> | 12"w x 32.5"d x 24.5"h       | <b>Shipping Weight</b>        | 265 lbs.  |
| <b>Top of Cubby to Floor</b>    | 24.5"                        |                               |           |
| <b>Bottom of Cubby to Floor</b> | 13.5"                        |                               |           |
| <b>Sleep Surface Dimensions</b> | 76"w x 29"d x 3.5"h          |                               |           |



**80" sleepover with left-side facing cubby and right-side facing table CL-80CT**

Single textiles

|                                 |                              |                        |          |
|---------------------------------|------------------------------|------------------------|----------|
| <b>Overall Dimensions</b>       | 104"w x 32.5"d x 32"h        | <b>COM 54"</b>         | 7 yds.   |
| <b>Seat Dimensions</b>          | 80"w x 20"d x 18.5"h         | <b>Cubic Feet</b>      | 70       |
| <b>Table Dimensions</b>         | 11.625"w x 32.125"d x 13.5"h | <b>Shipping Weight</b> | 278 lbs. |
| <b>Cubby Overall Dimensions</b> | 12"w x 32.5"d x 24.5"h       |                        |          |
| <b>Top of Cubby to Floor</b>    | 24.5"                        |                        |          |
| <b>Bottom of Cubby to Floor</b> | 13.5"                        |                        |          |
| <b>Sleep Surface Dimensions</b> | 80"w x 29"d x 3.5"h          |                        |          |



**80" sleepover with left-side facing cubby and right-side facing table CL-80CT-MT**

Multiple textiles

|                                 |                              |                               |           |
|---------------------------------|------------------------------|-------------------------------|-----------|
| <b>Overall Dimensions</b>       | 104"w x 32.5"d x 32"h        | <b>COM 54" - Seat</b>         | 2.25 yds. |
| <b>Seat Dimensions</b>          | 80"w x 20"d x 18.5"h         | <b>COM 54" - Inside Back</b>  | 2.75 yds. |
| <b>Table Dimensions</b>         | 11.625"w x 32.125"d x 13.5"h | <b>COM 54" - Outside Back</b> | 2.75 yds. |
| <b>Cubby Overall Dimensions</b> | 12"w x 32.5"d x 24.5"h       | <b>Cubic Feet</b>             | 70        |
| <b>Top of Cubby to Floor</b>    | 24.5"                        | <b>Shipping Weight</b>        | 278 lbs.  |
| <b>Bottom of Cubby to Floor</b> | 13.5"                        |                               |           |
| <b>Sleep Surface Dimensions</b> | 80"w x 29"d x 3.5"h          |                               |           |



| Standard Features  | Options Available   |
|--|---|
| <ul style="list-style-type: none"> <li>Left and right-side facing storage cubby surfaces are available in 3DL or solid surface</li> <li>Available in 76" and 80" sleep surface lengths</li> <li>Spring seat construction</li> <li>360° clean-thru design</li> <li>Cast legs and extruded aluminum frame provide durability and longevity</li> <li>9.5" High base design ensures easy access for floor cleaning and reduces maintenance efforts</li> <li>Casters feature red safety lock to improve visibility for users</li> <li>The mechanism-free design allows easy conversion from seating to sleeping, providing comfort without maintenance issues</li> <li>Sleep surface is upholstered in our exclusive <a href="#">SleepShield</a> polyurethane coating with improved chemical resistance on a four-way stretch polyester weft knitted fabric</li> <li>Provides a breathable, soft, and hygienic sleep surface</li> <li>Unique foam construction exclusive to Offshore</li> <li>Safety feature indicators, including red details on the locking casters and the sleep cushion straps</li> </ul> | <ul style="list-style-type: none"> <li>Storage cubbies are available with either a partially or fully covered top</li> <li>The top portion is available with a spill groove</li> <li>Optional coat rack placed at the back of the storage cubby</li> <li>Coat rack is available in Bone White, Chalk, Ion, Luster Grey, Oiled Bronze, Onyx, and Stone</li> <li>Dual-locking casters or non-marring glides</li> <li>Casters are available in black or grey</li> <li>The base is available in Bone White, Chalk, Ion, Luster Grey, Oiled Bronze, Onyx, and Stone</li> <li>Integrated power is tamper-resistant with (1) AC outlet and (2) USB-A outlets</li> <li>Power is available in Silver, Deep Space, and Black</li> </ul> |

**76" sleepover with left-side facing cubby and right-side facing cubby CL-76CC**

Single textiles

|                                 |                        |                        |          |
|---------------------------------|------------------------|------------------------|----------|
| <b>Overall Dimensions</b>       | 100"w x 32.5"d x 32"h  | <b>COM 54"</b>         | 6.5 yds. |
| <b>Seat Dimensions</b>          | 76"w x 20"d x 18.5"h   | <b>Cubic Feet</b>      | 67       |
| <b>Cubby Overall Dimensions</b> | 12"w x 32.5"d x 24.5"h | <b>Shipping Weight</b> | 335 lbs. |
| <b>Top of Cubby to Floor</b>    | 24.5"                  |                        |          |
| <b>Bottom of Cubby to Floor</b> | 13.5"                  |                        |          |
| <b>Sleep Surface Dimensions</b> | 76"w x 29"d x 3.5"h    |                        |          |



**76" sleepover with left-side facing cubby and right-side facing cubby CL-76CC-MT**

Multiple textiles

|                                 |                        |                               |           |
|---------------------------------|------------------------|-------------------------------|-----------|
| <b>Overall Dimensions</b>       | 100"w x 32.5"d x 32"h  | <b>COM 54" - Seat</b>         | 2.25 yds. |
| <b>Seat Dimensions</b>          | 76"w x 20"d x 18.5"h   | <b>COM 54" - Inside Back</b>  | 2.5 yds.  |
| <b>Cubby Overall Dimensions</b> | 12"w x 32.5"d x 24.5"h | <b>COM 54" - Outside Back</b> | 2.5 yds.  |
| <b>Top of Cubby to Floor</b>    | 24.5"                  | <b>Cubic Feet</b>             | 67        |
| <b>Bottom of Cubby to Floor</b> | 13.5"                  | <b>Shipping Weight</b>        | 335 lbs.  |
| <b>Sleep Surface Dimensions</b> | 76"w x 29"d x 3.5"h    |                               |           |



**80" sleepover with left-side facing cubby and right-side facing cubby CL-80CC**

Single textiles

|                                 |                        |                        |          |
|---------------------------------|------------------------|------------------------|----------|
| <b>Overall Dimensions</b>       | 104"w x 32.5"d x 32"h  | <b>COM 54"</b>         | 7 yds.   |
| <b>Seat Dimensions</b>          | 80"w x 20"d x 18.5"h   | <b>Cubic Feet</b>      | 70       |
| <b>Cubby Overall Dimensions</b> | 12"w x 32.5"d x 24.5"h | <b>Shipping Weight</b> | 348 lbs. |
| <b>Top of Cubby to Floor</b>    | 24.5"                  |                        |          |
| <b>Bottom of Cubby to Floor</b> | 13.5"                  |                        |          |
| <b>Sleep Surface Dimensions</b> | 80"w x 29"d x 3.5"h    |                        |          |



**80" sleepover with left-side facing cubby and right-side facing cubby CL-80CC-MT**

Multiple textiles

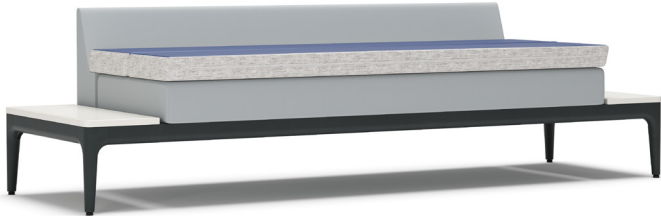
|                                 |                        |                               |           |
|---------------------------------|------------------------|-------------------------------|-----------|
| <b>Overall Dimensions</b>       | 104"w x 32.5"d x 32"h  | <b>COM 54" - Seat</b>         | 2.25 yds. |
| <b>Seat Dimensions</b>          | 80"w x 20"d x 18.5"h   | <b>COM 54" - Inside Back</b>  | 2.5 yds.  |
| <b>Cubby Overall Dimensions</b> | 12"w x 32.5"d x 24.5"h | <b>COM 54" - Outside Back</b> | 2.5 yds.  |
| <b>Top of Cubby to Floor</b>    | 24.5"                  | <b>Cubic Feet</b>             | 70        |
| <b>Bottom of Cubby to Floor</b> | 13.5"                  | <b>Shipping Weight</b>        | 348 lbs.  |
| <b>Sleep Surface Dimensions</b> | 80"w x 29"d x 3.5"h    |                               |           |



| Standard Features  | Options Available   |
|--|---|
| <ul style="list-style-type: none"> <li>Left and right-side facing storage cubby surfaces are available in 3DL or solid surface</li> <li>Available in 76" and 80" sleep surface lengths</li> <li>Spring seat construction</li> <li>360° clean-thru design</li> <li>Cast legs and extruded aluminum frame provide durability and longevity</li> <li>9.5" High base design ensures easy access for floor cleaning and reduces maintenance efforts</li> <li>Casters feature red safety lock to improve visibility for users</li> <li>The mechanism-free design allows easy conversion from seating to sleeping, providing comfort without maintenance issues</li> <li>Sleep surface is upholstered in our exclusive <a href="#">SleepShield</a> polyurethane coating with improved chemical resistance on a four-way stretch polyester weft knitted fabric</li> <li>Provides a breathable, soft, and hygienic sleep surface</li> <li>Unique foam construction exclusive to Offshore</li> <li>Safety feature indicators, including red details on the locking casters and the sleep cushion straps</li> </ul> | <ul style="list-style-type: none"> <li>Storage cubbies are available with either a partially or fully covered top</li> <li>The top portion is available with a spill groove</li> <li>Optional coat rack placed at the back of the storage cubby</li> <li>Coat rack is available in Bone White, Chalk, Ion, Luster Grey, Oiled Bronze, Onyx, and Stone</li> <li>Dual-locking casters or non-marring glides</li> <li>Casters are available in black or grey</li> <li>The base is available in Bone White, Chalk, Ion, Luster Grey, Oiled Bronze, Onyx, and Stone</li> <li>Integrated power is tamper-resistant with (1) AC outlet and (2) USB-A outlets</li> <li>Power is available in Silver, Deep Space, and Black</li> </ul> |

Sleep surface

|                   |             |
|-------------------|-------------|
| 76" Sleep Surface | 76"w x 29"d |
| 80" Sleep Surface | 80"w x 29"d |
| Cushion Thickness | 3.5"        |



Standard Features

- Available in 76" and 80" sleep surface lengths
- Mechanism-free design
- Unique foam construction exclusive to Offshore
- Safety feature indicators, including red details sleep cushion straps

SleepShield Features + Benefits

- *Advanced chemical resistance* — Resistant to harsh chemical cleaning agents, ensuring a long-lasting product lifespan
- *Four-way stretch* — Enhances patient comfort and pressure redistribution.
- *No delamination* — Engineered for long-term performance without peeling or breakdown
- *Breathable & comfortable* — Supports immersion and envelopment properties essential for pressure injury prevention
- *Waterproof barrier* — Provides a fluid-proof, virus-proof surface for infection control.
- *Anti-microbial* — Tested to AATCC 30 & ISO 22196 standards, containing an anti-fungal agent to prevent microbial deterioration.
- *Wipe clean* — Designed for easy maintenance and sanitation in high-use environments.
- *UV printable* — Proprietary, odor-free ink that doesn't crack when stretched.
- *100% Recycled yarn* — Certified to the Global Recycled Standard for eco-conscious material sourcing.
- *Halogen-free flame retardants* — Meets healthcare compliance standards while reducing environmental impact.
- *UV printable* — Proprietary, odor-free ink that doesn't crack when stretched.

**Arm with no arm cap**

|                       |                        |
|-----------------------|------------------------|
| Overall Dimensions    | 4.25"w x 32.5"d x 24"h |
| Arm Height From Floor | 24"                    |
| Arm Height From Seat  | 5.5"                   |



**Arm with resin arm cap**

|                       |                          |
|-----------------------|--------------------------|
| Overall Dimensions    | 4.25"w x 32.5"d x 24.5"h |
| Arm Height From Floor | 24.5"                    |
| Arm Height From Seat  | 6"                       |



**Arm with 3DL arm cap**

|                       |                           |
|-----------------------|---------------------------|
| Overall Dimensions    | 4.25"w x 32.5"d x 24.75"h |
| Arm Height From Floor | 24.75"                    |
| Arm Height From Seat  | 6.25"                     |



**Arm with solid surface arm cap**

|                       |                          |
|-----------------------|--------------------------|
| Overall Dimensions    | 4.25"w x 32.5"d x 24.5"h |
| Arm Height From Floor | 24.5"                    |
| Arm Height From Seat  | 6"                       |



### 3DL table

|                    |                              |
|--------------------|------------------------------|
| Overall Dimensions | 11.625"w x 32.125"d x 13.5"h |
| Table to Floor     | 13.5"                        |
| Table to Seat      | 5"                           |



### Solid surface table

|                    |                              |
|--------------------|------------------------------|
| Overall Dimensions | 11.625"w x 32.125"d x 13.5"h |
| Table to Floor     | 13.5"                        |
| Table to Seat      | 5"                           |



### 3DL table with spill groove

|                    |                              |
|--------------------|------------------------------|
| Overall Dimensions | 11.625"w x 32.125"d x 13.5"h |
| Table to Floor     | 13.5"                        |
| Table to Seat      | 5"                           |



### Solid surface table with spill groove

|                    |                              |
|--------------------|------------------------------|
| Overall Dimensions | 11.625"w x 32.125"d x 13.5"h |
| Table to Floor     | 13.5"                        |
| Table to Seat      | 5"                           |



#### Full cubby

|                           |                               |
|---------------------------|-------------------------------|
| Cubby Overall Dimensions  | 12"w x 32.5"d x 24.5"h        |
| Cubby Interior Dimensions | 11.625"w x 32.125"d x 10.25"h |
| Top of Cubby to Floor     | 24.5"                         |
| Bottom of Cubby to Floor  | 13.5"                         |
| Bottom of Cubby to Top    | 11"                           |



#### Partial cubby

|                           |                               |
|---------------------------|-------------------------------|
| Cubby Overall Dimensions  | 12"w x 32.5"d x 24.5"h        |
| Cubby Interior Dimensions | 11.625"w x 32.125"d x 10.25"h |
| Top of Cubby to Floor     | 24.5"                         |
| Bottom of Cubby to Floor  | 13.5"                         |
| Bottom of Cubby to Top    | 11"                           |



#### Full cubby with coat rack

|                             |                               |
|-----------------------------|-------------------------------|
| Overall Dimensions          | 12"w x 32.5"d x 64"h          |
| Cubby Overall Dimensions    | 12"w x 32.5"d x 24.5"h        |
| Cubby Interior Dimensions   | 11.625"w x 32.125"d x 10.25"h |
| Top of Cubby to Floor       | 24.5"                         |
| Bottom of Cubby to Floor    | 13.5"                         |
| Bottom of Cubby to Top      | 11"                           |
| Coat Rack Height from Floor | 64"                           |



#### Partial cubby with coat rack

|                             |                               |
|-----------------------------|-------------------------------|
| Overall Dimensions          | 12"w x 32.5"d x 64"h          |
| Cubby Overall Dimensions    | 12"w x 32.5"d x 24.5"h        |
| Cubby Interior Dimensions   | 11.625"w x 32.125"d x 10.25"h |
| Top of Cubby to Floor       | 24.5"                         |
| Bottom of Cubby to Floor    | 13.5"                         |
| Bottom of Cubby to Top      | 11"                           |
| Coat Rack Height from Floor | 64"                           |



## Standard Textile & Finish Selection

<http://carolina.ofs.com/design/textiles>  
<http://carolina.ofs.com/design/finishes>

## Frame Construction

|                  |   |
|------------------|---|
| Seat             | • 1.25" thick solid wood assembled frame with equally spaced 8 ga sinuous springs   |
| Back             | • 0.875" Plywood assembled frame  |
| Upholstered Arms | • 0.500" Plywood assembled arm frame  |
| Upholstery       | • All fabric and leather pieces are cut with automated cutters that utilize precise patterns                                |
| Assembly         | • The corners and joints are notched and slotted, and reinforced with glue and/or corner blocks, dowels, screws, or staples |

## Base Frame

|                  |   |
|------------------|---|
| Side / End Rails | • 1.25" thick solid wood assembled frame with equally spaced 8 ga sinuous springs |
| Legs             | • Powder-coated Casted Aluminum   |
| Casters          | • 2" diameter dual wheel with (red) brake pedal                                   |
| Glides           | • 1.0" diameter x 0.5" thick black rubber glide with 1/4-20 x 1" threaded stem    |

## Foam

|         |  |
|---------|--|
| Seat    | <ul style="list-style-type: none"> <li>• 3.0" Thick core foam 40 lb. compression / 2.3 density with 1.25" thick topper foam 30 lb. compression / 2.3 density</li> <li>• 0.5" thick Front &amp; Top overlay foam 30 lb. compression / 2.3 density</li> <li>• 0.25" thick Ends &amp; Back overlay foam 45 lb. compression / 1.8 density</li> </ul> |
| Back    | <ul style="list-style-type: none"> <li>• 2.0" Thick core foam 35 lb. compression / 2.5 density with 1.0" thick Memory Foam topper</li> <li>• 0.5" thick overlay foam 35 lb. compression / 2.5 density</li> </ul>   |
| Box Arm | • 0.25" thick overlay foam 90 lb. compression / 1.8 density  |

## Power Supply

- One 15 amp AC outlet, One USB-A 1.5 amp outlet, One USB-C 60 watt in same power unit
- All tamper resistant outlets
- 10' Black PVC Power Cord
- UL Listed
- Material: Powder-coated Aluminum
- Colors: (Frame) Silver, Black, Deep Space. (Outlets) Linen