



The Acoustic Lounge

Shelter for the digital nomad.

Introducing The Acoustic Lounge, a brand new collection of acoustic products designed for a dynamic workspace.

From single seaters for private work and sofas for casual catch-ups, to huddle spaces for collaborative work sessions, reimagine the workplace with a modular system designed for touch downs so big ideas can take off.

Solo



- 01 **Power Outlets***
1 AC Outlet, 1 USB-C and 1 USB-A (25W combined) outlet to keep you charged and connected.
- 02 **Sound Absorbing Fabric**
Custom polyester fabric with acoustic insulation that absorbs noise for distraction-free work sessions.
- 03 **Acoustic Panels**
59" high vertical fabric panels designed to keep prying eyes away from private work.
- 04 **Sofa Seating**
Single-person seating comfortably designed for long, productive days in durable fabric for frequent use.
- 05 **Custom Workstation***
Soft-touch side table that accommodates up to a 16" laptop, giving you ample room for all of your essentials.
- 06 **Storage***
Built-in oak veneered storage compartment to keep you organized.
- 07 **Easy Assembly**
DIY assembly in less than 30 minutes or let us do the heavy lifting with professional assembly and packaging and debris removal.
- 08 **Solid Oak Legs**
Chair legs with integrated leveling for sturdy work sessions that go the distance.
- 09 **Plug**
A standard 120V plug with a 6ft long power cord (4.5' exposed) gives you freedom to make room where you need it most.

* Solo unit available without desk. Does not come with Power Outlets, Custom Workstation or Storage.

Duo



- 01

Sound Absorbing Fabric
Custom polyester fabric with acoustic insulation that absorbs noise for distraction-free work sessions.
- 02

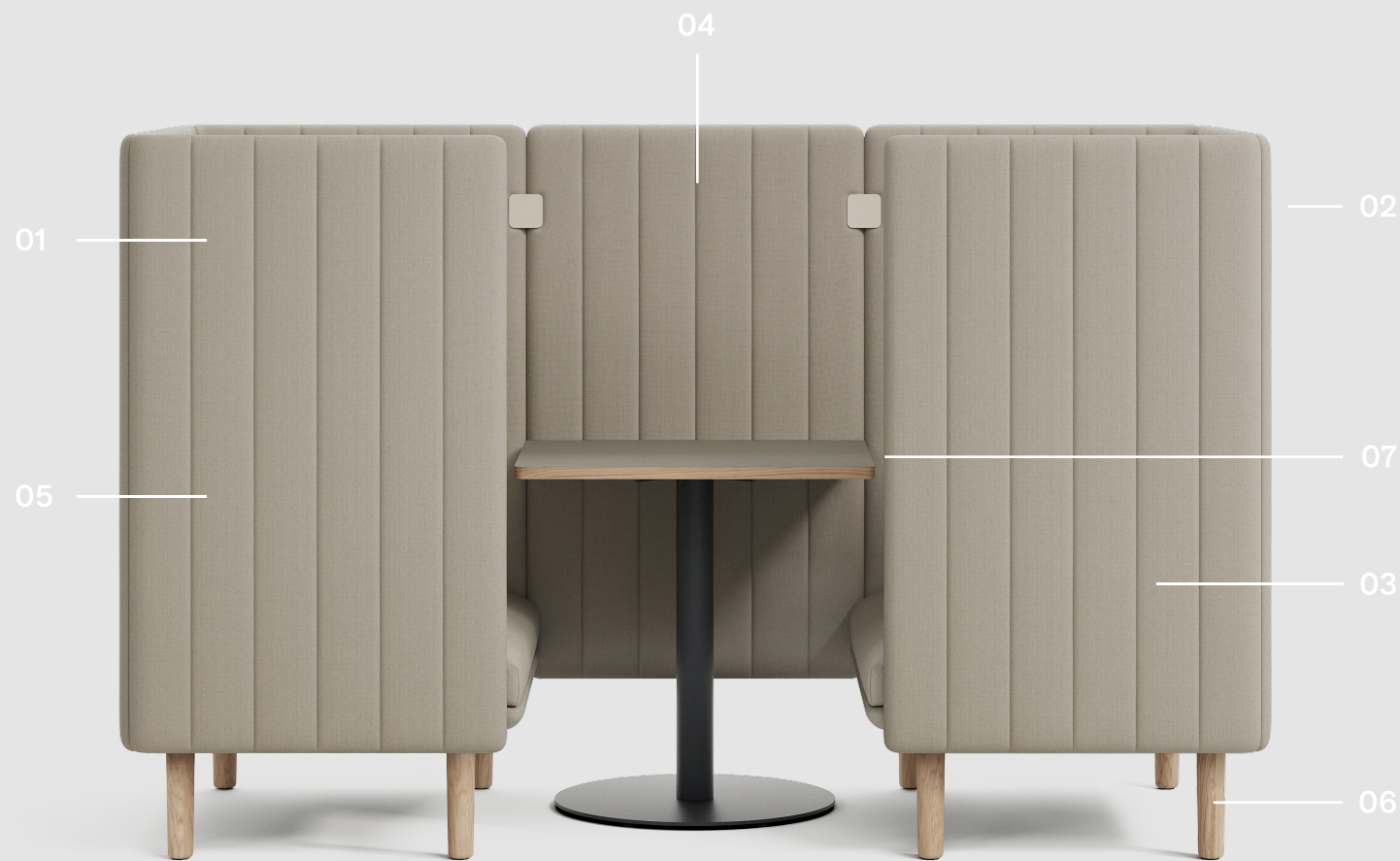
Acoustic Panels
59” high vertical fabric panels designed to keep prying eyes away from private work.
- 03

Sofa Seating
Two-person seating comfortably designed for long, productive days in durable fabric for frequent use.
- 04

Easy Assembly
DIY assembly in less than 30 minutes or let us do the heavy lifting with professional assembly and packaging and debris removal.
- 05

Solid Oak Legs
Chair legs with integrated leveling for sturdy work sessions that go the distance.

Solo Connect



- 01 Sound Absorbing Fabric**
Custom polyester fabric with acoustic insulation that absorbs noise for distraction-free work sessions.
- 02 Acoustic Panels**
59" high vertical fabric panels designed to keep prying eyes away from private work.
- 03 Sofa Seating**
Two single-person seats comfortably designed for long, productive days in durable fabric for frequent use.
- 04 Connector Panel**
Fabric connector panel that extends our Acoustic Lounge to make our Solo unit the perfect space for collaboration.
- 05 Easy Assembly**
DIY assembly in less than 60 minutes or let us do the heavy lifting with professional assembly and packaging and debris removal.
- 06 Solid Oak Legs**
Chair legs with integrated leveling for sturdy work sessions that go the distance.
- 07 Table**
Custom wood table available as an add-on.

Duo Connect

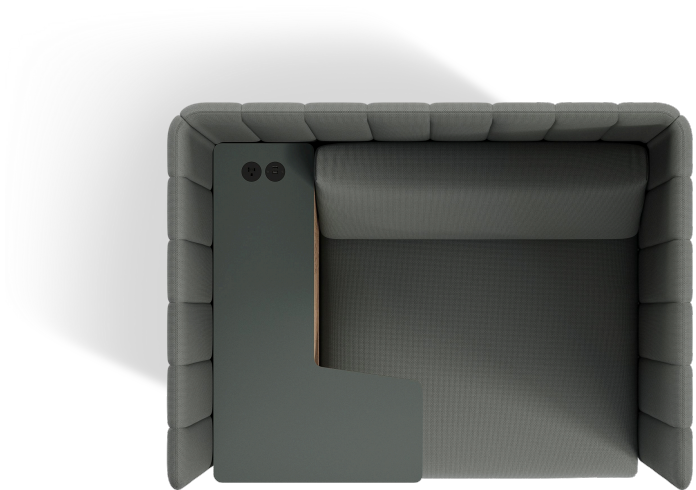


- 01 Sound Absorbing Fabric**
Custom polyester fabric with acoustic insulation that absorbs noise for distraction-free work sessions.
- 02 Acoustic Panels**
59" high vertical fabric panels designed to keep prying eyes away from private work.
- 03 Sofa Seating**
Two sets of two-person sofas comfortably designed for long, productive days in durable fabric for frequent use.
- 04 Connector Panel**
Fabric connector panel that extends our Acoustic Lounge to make our Duo unit the perfect space for collaboration.
- 05 Easy Assembly**
DIY assembly in less than 60 minutes or let us do the heavy lifting with professional assembly and packaging and debris removal.
- 06 Solid Oak Legs**
Chair legs with integrated leveling for sturdy work sessions that go the distance.
- 07 Table**
Custom wood table available as an add-on.

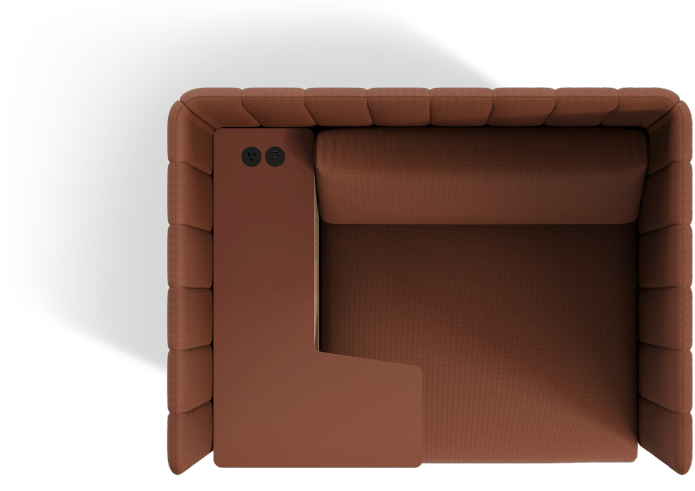
Color Palette



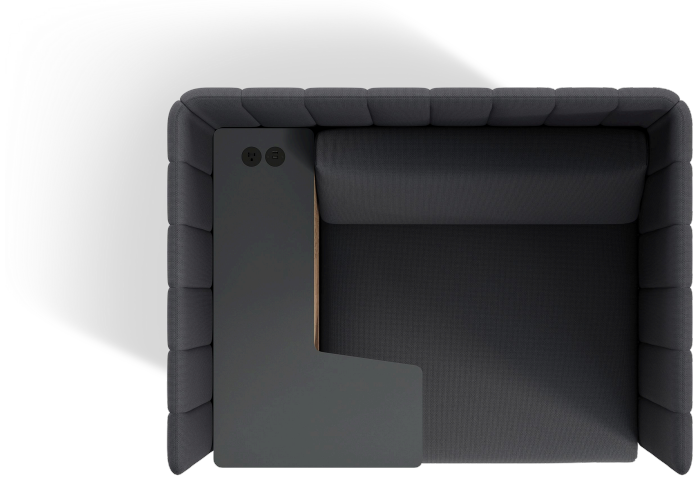
 Sand



 Cactus

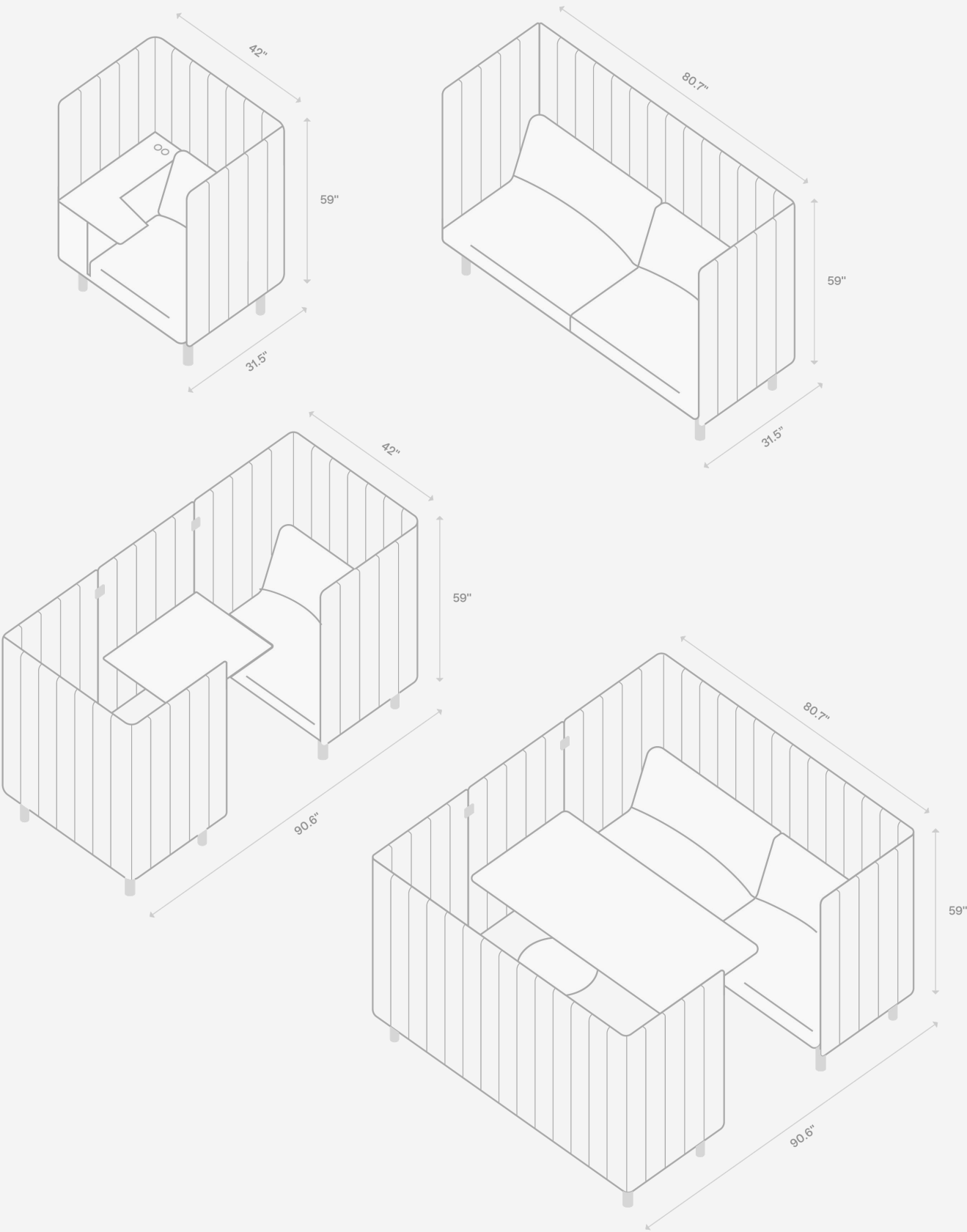


 Terracotta



 Graphite

Specs + Dimensions



	Solo	Solo with Desk	Solo Connect with Table	Duo	Duo Connect with Table
Width	42"	42"	90.6"	80.7"	90.6"
Depth	31.5"	31.5"	42"	31.5"	80.7"
Height	59"	59"	59"	59"	59"
Seat Height	19"	19"	19"	19"	19"
Seat Depth	22.5"	22.5"	22.5"	22.5"	22.5"
Table Width	N/A	N/A	29.5"	N/A	29.5"
Table Length	N/A	N/A	23.8"	N/A	59.8"
Table Height	N/A	29"	30"	N/A	30"
Weight	74.2 lbs	86.5 lbs	178 lbs	121 lbs	307 lbs
Capacity	1 person	1 person	2 people	2 people	4+ people

Power requirements
Unit comes with a standard Nema 5-15p 3-prong plug.

Warranty
We cover the full cost of repairs or replacements needed due to manufacturing defects. View our warranty details and restrictions here: <https://room.com/pages/warranty>



R O
O M

Contact your
OFS Representative

ofs.com/room