

# Specifications

## Bespoke Wall

### 300142

#### Application

Walls

#### Characteristics

Content: 100% Non-Phthalate Vinyl

Finish: None

Backing: Polyester/Cotton Osnaburg

Width: 50" (127cm)

Class: Type II

Weight: 20 oz/ly (600 gr/lm)

Traffic: High Traffic

Country of Origin: Great Britain

Note: Installation is sized and produced on a project-specific basis.

Note on Mold: Intended for use in buildings designed and maintained to avoid moisture on or within walls.

Application must conform to current Installation Guidelines included in each shipment or available at [maharam.com](http://maharam.com).

#### Price

Contact your sales representative for pricing.

#### Maintenance

W-Clean with water-based cleanser.

#### Testing

Flammability: ASTM E84 Adhered

CAN ULC S102 Adhered

Lightfastness: AATCC 16.3, 40+ hours



Specifications  
Bespoke Wall  
300142

**Environmental**  
Free of Intentionally Added PFAS

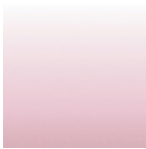
**Warranty**  
10 years.

© 2019 Knoll, Inc.

Complete product information at [knolltextiles.com](https://www.knolltextiles.com)  
800.645.3943



001 Wilderness



002 Blushing



003 Crocus



004 Breeze



005 Malibu



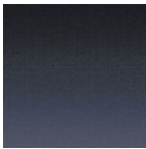
006 Ficus



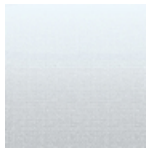
007 Goldfinch



008 Snapdragon



009 Mystic



010 Shade