

# Specifications

## Windswept

### 300245

**Knoll Textiles**

#### Application

Walls

#### Characteristics

Content: 76% Thermoplastic Olefin, 24% Post-Industrial Recycled Thermoplastic Olefin

Finish: None

Backing: Polyester/Cotton Osnaburg

Width: 52" (132cm)

Repeat: 18" V, 53" H

(46cm V, 135cm H)

Bolt Size: 30 yards (27 m)

Weight: 20 oz/ly (600 gr/lm)

Traffic: High Traffic

Country of Origin: USA

Note on Mold: Intended for use in buildings designed and maintained to avoid moisture on or within walls.

Application must conform to current Installation Guidelines included in each shipment or available at [maharam.com](http://maharam.com).

#### Price

Contact your sales representative for pricing.

#### Maintenance

W-Clean with water-based cleanser.

#### Testing

Flammability: ASTM E84 Adhered

CAN ULC S102 Adhered

Lightfastness: AATCC 16.3, 200+ hours



Specifications  
Windswept  
300245

Knoll Textiles

Environmental

Greenguard Gold Certified  
Contains Recycled Content  
FR Free  
Free of Intentionally Added PFAS

Warranty

10 years.

© 2022 Knoll, Inc.

Complete product information at [knolltextiles.com](https://knolltextiles.com)  
800.645.3943



001 Snowfall



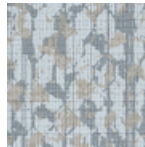
002 Zephyr



003 Hummingbird



004 Cliffside



005 Surf



006 Thunder



007 Nighthawk