



**COMMON FACTOR 2**

*Milliken*<sup>™</sup>

A CONTINUOUS RANDOM<sup>®</sup> COLLECTION

SHIPS WITHIN 3 WEEKS | LOW MINIMUM CUSTOMS



Introducing Common Factor 2, available in 6 patterns and 8 colors. A continuation of the Common Factor product line, this collection also embodies the creative spirit made possible by **Continuous Random®**, a Milliken innovation. Our advanced design framework reduces the complexity associated with pattern matched carpet tiles. A single pattern contains several unique tiles that all pattern match regardless of installation order. This means:

- ❑ No complicated seaming diagram is required
- ❑ A simplified process to order, install, and maintain
- ❑ Achieving continuous, unbroken patterning through a simple monolithic installation
- ❑ Attic stock of a single SKU saves you costs

**SHIPS IN 3 WEEKS » LOW CUSTOM MINIMUMS**

Milliken is the only manufacturer in the world that can make pattern matched carpet tile for continuous or large scale designs otherwise only possible in broadloom.



Scan to learn more about Continuous Random®.



# COMMON

Mimic in Light Neutral MIM19-6-235. Monolithic.

# E A C T C O M M O N F A C T O R



CIRCUIT

CONTINUOUS RANDOM - 1M Tiles



Navy  
CIR133-254-258



Denim  
CIR245-119



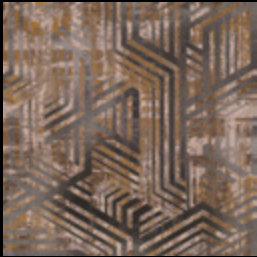
Black  
CIR180-174-19



Dark Neutral  
CIR251-174-254



Light Neutral  
CIR19-6-235



Gold  
CIR204-167-235



Marine  
CIR228-174-201



Berry  
CIR272-119-137



Circuit in Berry CIR272-119-137. Monolithic.



Circuit in Light Neutral CIR19-6-235. Monolithic.





CONTINUOUS RANDOM - 1M Tiles

GAMETIME



**Navy**  
GAM133-254-258



**Denim**  
GAM245-119



**Black**  
GAM180-174-19



**Dark Neutral**  
GAM251-174-254



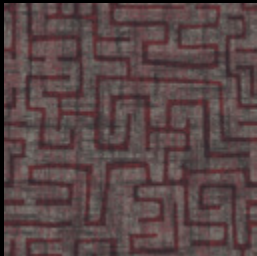
**Light Neutral**  
GAM19-6-235



**Gold**  
GAM204-167-235



**Marine**  
GAM228-174-201



**Berry**  
GAM272-119-137





MIMIC

CONTINUOUS RANDOM - 1M Tiles



Navy  
MIM133-254-258



Denim  
MIM245-119



Black  
MIM180-174-19



Dark Neutral  
MIM251-174-254



Light Neutral  
MIM19-6-235



Gold  
MIM204-167-235



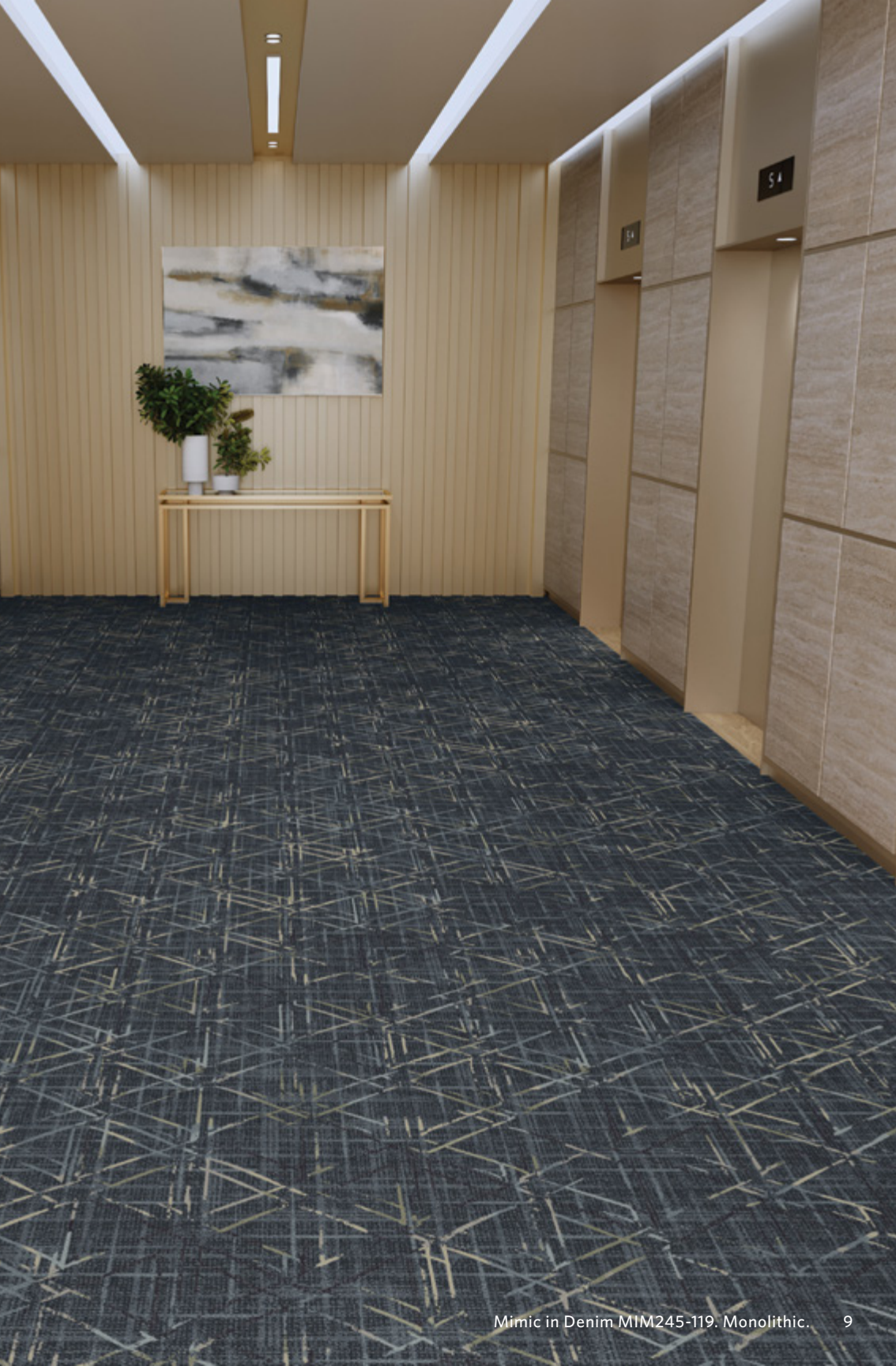
Marine  
MIM228-174-201



Berry  
MIM272-119-137



Mimic in Light Neutral MIM19-6-235. Monolithic.



Mimic in Denim MIM245-119. Monolithic.





CONTINUOUS RANDOM - 1M Tiles

NU-FRIEZE



**Navy**  
NUF133-254-258



**Denim**  
NUF245-119



**Black**  
NUF180-174-19



**Dark Neutral**  
NUF251-174-254



**Light Neutral**  
NUF19-6-235



**Gold**  
NUF204-167-235



**Marine**  
NUF228-174-201



**Berry**  
NUF272-119-137

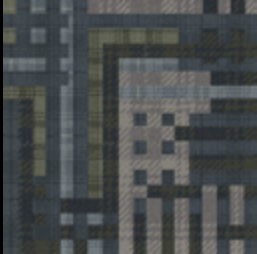


RAD PLAID

CONTINUOUS RANDOM - 1M Tiles



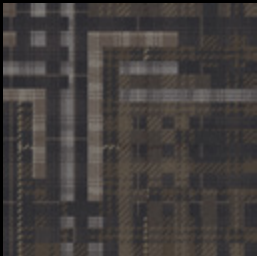
Navy  
RAD133-254-258



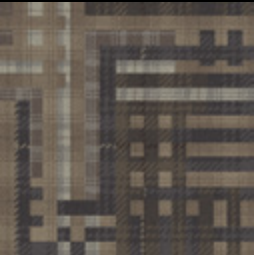
Denim  
RAD245-119



Black  
RAD180-174-19



Dark Neutral  
RAD251-174-254



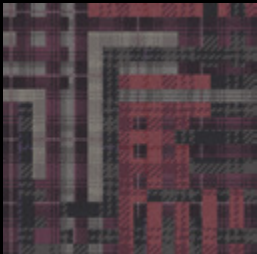
Light Neutral  
RAD19-6-235



Gold  
RAD204-167-235



Marine  
RAD228-174-201



Berry  
RAD272-119-137



Rad Plaid in Black RAD180-174-19. Monolithic.



Rad Plaid in Navy RAD133-254-258. Monolithic.





CONTINUOUS RANDOM - 1M Tiles

SURVEY



**Navy**  
SRV133-254-258



**Denim**  
SRV245-119



**Black**  
SRV180-174-19



**Dark Neutral**  
SRV251-174-254



**Light Neutral**  
SRV19-6-235



**Gold**  
SRV204-167-235



**Marine**  
SRV228-174-201



**Berry**  
SRV272-119-137





Circuit in Berry CIR272-119-137. Monolithic.

## QUICKSHIP

Streamline project planning with fast track delivery. Common Factor 2 products ship in 3 weeks or less, making it an ideal choice for accelerated timelines.



16 Mimic in Denim MIM245-119. Monolithic.



# MODIFIED STANDARD

If Milliken's standard offerings don't suit your project, we can work together to customize the product color for orders over 100 SY. Additionally, our PrintWorks technology can translate any pattern and color combination to a variety of base textures and price points.







WellBAC™ cushion backing **enhances ergonomics and underfoot comfort**, reducing as much as 24% of muscle strain (compared to hardback).



The acoustic technology of our carpet **reduces noise by up to 50%** as compared to other flooring.



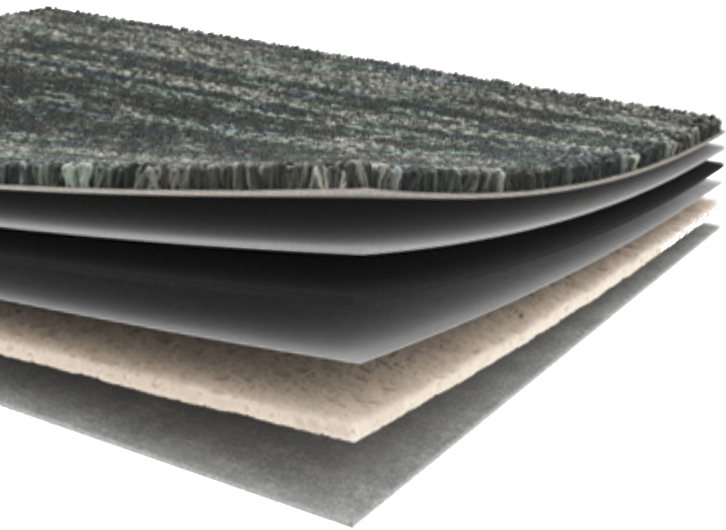
WellBAC™ open-cell backing allows the floor to breathe. In fact, **we haven't seen a moisture claim in 20+ years.**



**Save time and money with installation.** Our carpet tiles can be installed over old adhesive and it's rarely necessary to scarify or seal the floor.



Designed with wellness in mind, **we select carpet materials that are Red List Free and PVC-Free.**



Circuit in Light Neutral CIR19-6-235. Monolithic.

# PACKED *with* PERFORMANCE.



Scan to learn more about all the benefits Milliken products have to offer.



Scan to learn more about our commitment to sustainability.

## CLIMATE IMPACT

Our climate is changing. Milliken takes a holistic approach reducing our products' embodied carbon without compromise to quality. We champion circularity through our N/XT Life™ reclamation program, and continue on our carbon reduction journey offsetting the full cradle-to-gate carbon footprint through our M/PACT™ program.



**M/PACT™**  
CARBON OFFSET PROGRAM

**N/XT LIFE™**  
CIRCULARITY PROGRAM

## MATERIAL HEALTH

Our innovative flooring solutions pave the way for healthier, happier, more productive spaces. All Milliken carpet is **PVC-Free** and free of harmful Red List materials. With 100% material transparency, low-VOC, and less new raw materials, we aim to eliminate harmful chemicals in-line with the highest voluntary standard.



**Declare.**

## YOUR COMPLETE FLOORING SOLUTION

Discover sustainably crafted, high performance Resilient and Entrance Flooring options at

[www.MillikenFloors.com](http://www.MillikenFloors.com)





## COMMON FACTOR 2

Circuit / Gametime / Mimic  
Nu-Frieze / Rad Plaid / Survey

### Construction

*Tetra Point Base:* Tufted, Textured Loop

### Tile Size

1 m x 1 m (39.4" x 39.4")

### Yarn Type

Milliken-Certified WearOn® Nylon

### Stain Resist / Soil Release

StainSmart®

### Dye Method

PrintWorks™ Precision Dyeing

### Finished Pile Height

0.14" (3.56 mm)

### Average Density (Finished)

7,793

### Standard Backing

PVC-Free WellBAC® Comfort Plus Cushion  
Available with TractionBack®

### Texture Appearance Retention Rating (TARR)

Severe Traffic End-Use Applications

### Recommended Installation Method(s)



MONOLITHIC



**M/PACT™** CARBON OFFSET PROGRAM

### SHOWN ON THE COVER

(Front) Rad Plaid in Navy RAD133-254-258. Monolithic.  
(Back) Gametime in Dark Neutral GAM251-174-254. Monolithic.

Images in this brochure are approximate for color and pattern scale. Please use actual carpet samples to make your final selections.

Milliken™

Customer Concierge 800.824.2246 | millikenfloors.com  
© 2025 Milliken & Company | Design © Milliken & Company | Made in the USA

210038876  
CP 0525