

B | Approach PRODUCT SPECIFICATIONS



COLLECTION	Strategy
STYLE NUMBER	10246
PRODUCT TYPE	Broadloom
FIBER TYPE	EcoSolution Q® Nylon
DYE METHOD	87% Solution Dyed 13% Yarn Dyed
PRIMARY BACKING	Synthetic
SECONDARY BACKING	ClassicBac®
PROTECTIVE TREATMENTS	SSP® Shaw Soil Protection

PRODUCT SIZE

GAUGE

STITCHES

FINISHED PILE THICKNESS

AVERAGE DENSITY

KILOTEX

TOTAL THICKNESS

TUFTED YARN WEIGHT

INSTALLATION PATTERN REPEAT

US Units

12 ft

1/10 inches

12.33 per inches

0.127 inches

6520 oz/yd³

0.281 inches

23 oz/yd²

0.17 ft W X 0.29 ft L

Metric Units

3.66 m

39.37 per 10 cm

48.56 per 10 cm

3.23 mm

0.24 g/cm³

13.27

7.14 mm

779.83 g/m²

5.08 cm W X 8.89 cm L

Performance Testing

PILL TEST

Pass

RADIANT PANEL

Class I

NBS SMOKE

Less than 450

ELECTROSTATIC PROPENSITY

Less than 3.5 kv

CRI GREENLABEL PLUS

GLP8472

ADA COMPLIANCE

>0.6, meets the recommended static coefficient of friction for ADA walking surfaces and accessible routes

Test Reports may be included or listed by the manufacturing/inventory style number as opposed to the noted selling style number.

Warranty

10 Year Commercial Limited

Please visit patcraft.com for the most current warranty information.

B | Approach

Installation Methods

Direct Glue

[Installation Guidelines](#)

[Maintenance Guidelines](#)

Environmental Specifications

RECYCLABILITY 100% Recyclable

Materials

Ingredients

DOES NOT CONTAIN does not contain PVC, phthalates or PBD/PBDE

Recycled Content

TOTAL RECYCLED CONTENT (BY WEIGHT) <1%

PRE-CONSUMER <1%

POST-CONSUMER 0%

COUNTRY OF ORIGIN (MANUFACTURER) USA

Meets or exceeds all local and national regulations in country of manufacture. Manufactured in an ISO9001 & ISO14001 certified facility or equivalent. Recycled content is calculated using system allocation, mass balance, and direct insertion. The actual recycled content in this product will likely vary. For more information email info@patcraft.com.

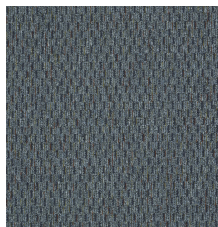
Third Party Certifications

USGBC LEED contributes

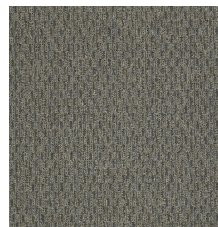
Available Colorways



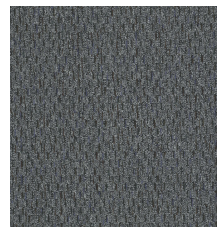
NOVEL 46209



SHOTGUN 46407



STYLIZED 46502



SURREAL 46505



STRUCTURED 46704

Specifications are subject to nominal manufacturing variances. Material supply and/or manufacturing processes may necessitate specification changes without notice. This carpet is an exclusive design and may not be duplicated in any manner. Use of this design in the creation of another carpet design is also strictly prohibited. Visit patcraft.com/testing for more information.