

## B | Blossom PRODUCT SPECIFICATIONS



|                          |                              |
|--------------------------|------------------------------|
| <b>COLLECTION</b>        | Amplified Nature             |
| <b>STYLE NUMBER</b>      | 10645                        |
| <b>PRODUCT TYPE</b>      | Broadloom                    |
| <b>CONSTRUCTION</b>      | Multi-Level Pattern Cut/Loop |
| <b>FIBER TYPE</b>        | EcoSolution Q100® Nylon      |
| <b>DYE METHOD</b>        | 100% Solution Dyed           |
| <b>PRIMARY BACKING</b>   | Synthetic                    |
| <b>SECONDARY BACKING</b> | Ultraloc® MB                 |

|                                    | US Units                | Metric Units             |
|------------------------------------|-------------------------|--------------------------|
| <b>PRODUCT SIZE</b>                | 12 ft                   | 3.66 m                   |
| <b>GAUGE</b>                       | 1/12 inches             | 47.24 per 10 cm          |
| <b>STITCHES</b>                    | 10 per inches           | 39.37 per 10 cm          |
| <b>FINISHED PILE THICKNESS</b>     | 0.148 inches            | 3.76 mm                  |
| <b>AVERAGE DENSITY</b>             | 5108 oz/yd <sup>3</sup> | 0.19 g/cm <sup>3</sup>   |
| <b>KILOTEX</b>                     |                         | 11.17                    |
| <b>TOTAL THICKNESS</b>             | 0.303 inches            | 7.70 mm                  |
| <b>TUFTED YARN WEIGHT</b>          | 21 oz/yd <sup>2</sup>   | 712.02 g/m <sup>2</sup>  |
| <b>INSTALLATION PATTERN REPEAT</b> | 6 ft W X 7.92 ft L      | 182.88 cm W X 241.3 cm L |

## Performance Testing

|                                 |   |
|---------------------------------|---|
| <b>PILL TEST</b>                | Pass  |
| <b>RADIANT PANEL</b>            | Class I   |
| <b>NBS SMOKE</b>                | Less than 450   |
| <b>ELECTROSTATIC PROPENSITY</b> | Less than 3.5 kv  |
| <b>CRI GREENLABEL PLUS</b>      | GLP8472   |
| <b>ADA COMPLIANCE</b>           | >0.6, meets the recommended static coefficient of friction for ADA walking surfaces and accessible routes |

Test Reports may be included or listed by the manufacturing/inventory style number as opposed to the noted selling style number.

## Warranty

[Lifetime Commercial Limited](#)

Please visit [patcraft.com](https://www.patcraft.com) for the most current warranty information.

## B | Blossom

### Materials

#### Recycled Content

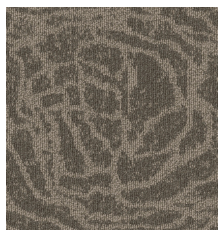
|   |     |
|---|-----|
| <b>TOTAL RECYCLED CONTENT (BY WEIGHT)</b> | <1% |
| <b>PRE-CONSUMER</b>                       | <1% |
| <b>POST-CONSUMER</b>                      | 0%  |
| <b>COUNTRY OF ORIGIN (MANUFACTURER)</b>   | USA |

Meets or exceeds all local and national regulations in country of manufacture. Manufactured in an ISO9001 & ISO14001 certified facility or equivalent. Recycled content is calculated using system allocation, mass balance, and direct insertion. The actual recycled content in this product will likely vary. For more information email [info@patcraft.com](mailto:info@patcraft.com).

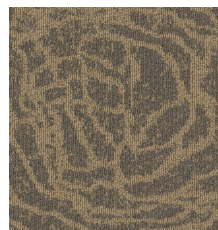
### Available Colorways



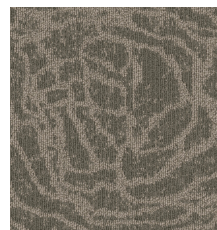
AMBER 00110



POPLAR 00145



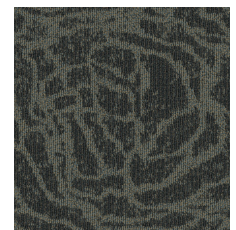
RIDGE 00200



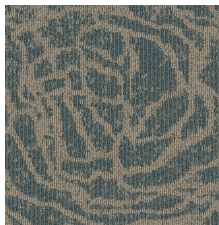
ALPINE 00300



CYPRESS 00395



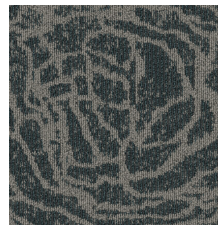
ALGAE 00400



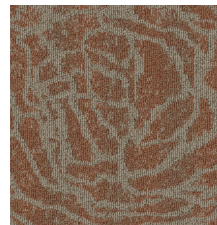
ADRIATIC 00425



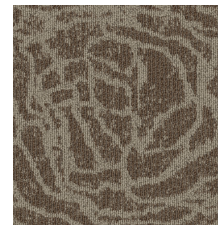
TIDE 00450



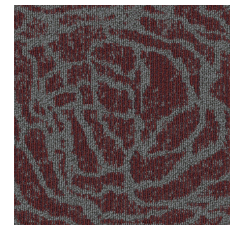
MOONLIGHT 00490



TERRACOTTA 00650



SILT 00700



SNAPDRAGON 00850

Specifications are subject to nominal manufacturing variances. Material supply and/or manufacturing processes may necessitate specification changes without notice. This carpet is an exclusive design and may not be duplicated in any manner. Use of this design in the creation of another carpet design is also strictly prohibited. Visit [patcraft.com/testing](https://patcraft.com/testing) for more information.