

B | PACE PRODUCT SPECIFICATIONS



COLLECTION	Connection
STYLE NUMBER	I0250
PRODUCT TYPE	Broadloom
CONSTRUCTION	Pattern Loop
FIBER TYPE	EcoSolution Q® Nylon
DYE METHOD	100% Solution Dyed
PRIMARY BACKING	Synthetic
SECONDARY BACKING	ClassicBac®
PROTECTIVE TREATMENTS	SSP® Shaw Soil Protection

	US Units	Metric Units
PRODUCT SIZE	12 ft	3.66 m
GAUGE	1/10 inches	39.37 per 10 cm
STITCHES	10 per inches	39.37 per 10 cm
FINISHED PILE THICKNESS	0.113 inches	2.87 mm
AVERAGE DENSITY	7009 oz/yd ³	0.26 g/cm ³
KILOTEX		11.63
TOTAL THICKNESS	0.258 inches	6.55 mm
TUFTED YARN WEIGHT	22 oz/yd ²	745.93 g/m ²

Performance Testing

PILL TEST	Pass
RADIANT PANEL	Class I
NBS SMOKE	Less than 450
ELECTROSTATIC PROPENSITY	Less than 3.5 kv
CRI GREENLABEL PLUS	GLP8472
ADA COMPLIANCE	>0.6, meets the recommended static coefficient of friction for ADA walking surfaces and accessible routes

Test Reports may be included or listed by the manufacturing/inventory style number as opposed to the noted selling style number.

Warranty

10 Year Commercial Limited

Please visit [patcraft.com](https://www.patcraft.com) for the most current warranty information.

B | PACE

Installation Methods

Direct Glue

[Installation Guidelines](#)

[Maintenance Guidelines](#)

Environmental Specifications

RECYCLABILITY 100% Recyclable

Materials

Ingredients

DOES NOT CONTAIN does not contain PVC, phthalates or PBD/PBDE

Recycled Content

TOTAL RECYCLED CONTENT (BY WEIGHT) <1%

PRE-CONSUMER <1%

POST-CONSUMER 0%

COUNTRY OF ORIGIN (MANUFACTURER) USA

Meets or exceeds all local and national regulations in country of manufacture. Manufactured in an ISO9001 & ISO14001 certified facility or equivalent. Recycled content is calculated using system allocation, mass balance, and direct insertion. The actual recycled content in this product will likely vary. For more information email info@patcraft.com.

Third Party Certifications

CRADLE TO CRADLE CERTIFIED®

[Silver Level \(Version 3.1\)](#)

HEALTH PRODUCT DECLARATION (HPD)

[Per GHS SDS Disclosure](#)

ENVIRONMENTAL PRODUCT DECLARATION (EPD)

[3rd Party Certified in Accordance with ISO14044, ISO14025 & EN15804](#)

NSF 140

[Gold](#)

CRI GREEN LABEL PLUS (GLP)

[GLP8472](#)

ENVIRONMENTAL GUARANTEE

[Free transport and recycling within the United States and Canada.](#)

PRODUCT PACKAGING

[100% Recyclable](#)

USGBC LEED

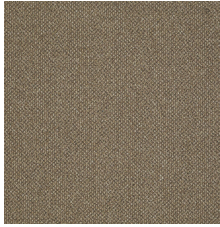
[contributes](#)



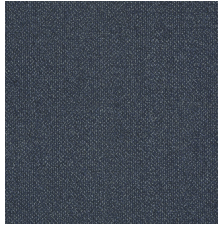
Specifications are subject to nominal manufacturing variances. Material supply and/or manufacturing processes may necessitate specification changes without notice. This carpet is an exclusive design and may not be duplicated in any manner. Use of this design in the creation of another carpet design is also strictly prohibited. Visit patcraft.com/testing for more information.

B | PACE

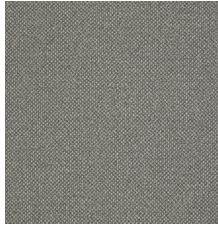
Available Colorways



CANTOR 50112



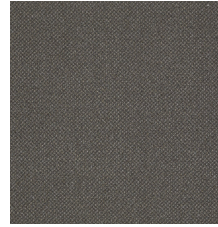
CRUISE 50407



PARADE 50504



MARCH 50509



STROLL 50702