

# B | Harmonious Broadloom PRODUCT SPECIFICATIONS

<b>COLLECTION</b>	Inspired Connection
<b>STYLE NUMBER</b>	10560
<b>PRODUCT TYPE</b>	Broadloom
<b>FIBER TYPE</b>	EcoSolution Q100® Nylon
<b>DYE METHOD</b>	100% Solution Dyed
<b>PRIMARY BACKING</b>	Synthetic
<b>SECONDARY BACKING</b>	Ultraloc®
<b>GSA APPROVED PRODUCT</b>	Yes

	<b>US Units</b>	<b>Metric Units</b>
<b>PRODUCT SIZE</b>	12 ft	3.66 m
<b>GAUGE</b>	1/10 inches	39.37 per 10 cm
<b>STITCHES</b>	9.33 per inches	36.75 per 10 cm
<b>FINISHED PILE THICKNESS</b>	0.105 inches	2.67 mm
<b>AVERAGE DENSITY</b>	8914 oz/yd <sup>3</sup>	0.33 g/cm <sup>3</sup>
<b>KILOTEX</b>		8.59
<b>TOTAL THICKNESS</b>	0.302 inches	7.67 mm
<b>TUFTED YARN WEIGHT</b>	26 oz/yd <sup>2</sup>	881.55 g/m <sup>2</sup>
<b>INSTALLATION PATTERN REPEAT</b>	6 ft W X 6.57 ft L	182.88 cm W X 200.28 cm L

## Performance Testing

<b>PILL TEST</b>	Pass
<b>RADIANT PANEL</b>	Class I
<b>NBS SMOKE</b>	Less than 450
<b>ELECTROSTATIC PROPENSITY</b>	Less than 3.5 kv
<b>CRI GREENLABEL PLUS</b>	GLP8472
<b>ADA COMPLIANCE</b>	>0.6, meets the recommended static coefficient of friction for ADA walking surfaces and accessible routes

Test Reports may be included or listed by the manufacturing/inventory style number as opposed to the noted selling style number.

## Warranty

[Lifetime Commercial Limited](#)

Please visit [patcraft.com](https://www.patcraft.com) for the most current warranty information.

## Installation Methods

Direct Glue

[Installation Guidelines](#)

[Maintenance Guidelines](#)

## Environmental Specifications

<b>RECYCLABILITY</b>	100% recyclable
----------------------	-----------------

# B | Harmonious Broadloom

## Materials

### Ingredients

**DOES NOT CONTAIN** does not contain PVC, phthalates or PBD/PBDE

### Recycled Content

**TOTAL RECYCLED CONTENT (BY WEIGHT)** <1%

**PRE-CONSUMER** <1%

**POST-CONSUMER** 0%

**COUNTRY OF ORIGIN (MANUFACTURER)** USA

Meets or exceeds all local and national regulations in country of manufacture. Manufactured in an ISO9001 & ISO14001 certified facility or equivalent. Recycled content is calculated using system allocation, mass balance, and direct insertion. The actual recycled content in this product will likely vary. For more information email [info@patcraft.com](mailto:info@patcraft.com).

## Third Party Certifications

**USGBC LEED** contributes

## Available Colorways



NOTEWORTHY 00110



THOUGHTFUL 00125



ORGANIC 00145



MOTIVATE 00310



CONTEMPLATE 00330



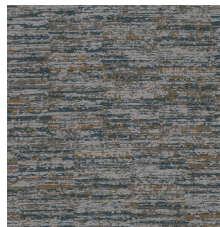
SENTIMENT 00400



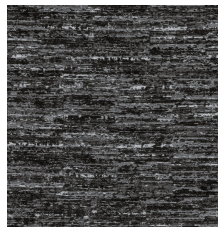
ASPIRE 00450



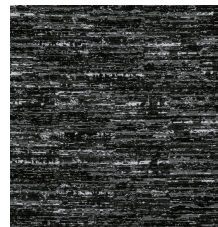
PURPOSE 00500



KINDRED 00530



AFFINITY 00550



FORTIFY 00590



TRANSFORM 00705

Specifications are subject to nominal manufacturing variances. Material supply and/or manufacturing processes may necessitate specification changes without notice. This carpet is an exclusive design and may not be duplicated in any manner. Use of this design in the creation of another carpet design is also strictly prohibited. Visit [patcraft.com/testing](https://patcraft.com/testing) for more information.