

## B | Technique

### PRODUCT SPECIFICATIONS



<b>COLLECTION</b>	Strategy
<b>STYLE NUMBER</b>	10248
<b>PRODUCT TYPE</b>	Broadloom
<b>FIBER TYPE</b>	EcoSolution Q® Nylon
<b>DYE METHOD</b>	100% Solution Dyed
<b>PRIMARY BACKING</b>	Synthetic
<b>SECONDARY BACKING</b>	ClassicBac®
<b>PROTECTIVE TREATMENTS</b>	SSP® Shaw Soil Protection

<b>PRODUCT SIZE</b>	<b>US Units</b>	<b>Metric Units</b>
<b>GAUGE</b>	12 ft	3.66 m
<b>STITCHES</b>	1/10 inches	39.37 per 10 cm
<b>FINISHED PILE THICKNESS</b>	10.33 per inches	40.68 per 10 cm
<b>AVERAGE DENSITY</b>	0.129 inches	3.28 mm
<b>KILOTEX</b>	6698 oz/yd <sup>3</sup>	0.25 g/cm <sup>3</sup>
<b>TOTAL THICKNESS</b>		11.44
<b>TUFTED YARN WEIGHT</b>	0.277 inches	7.04 mm
<b>INSTALLATION PATTERN REPEAT</b>	24 oz/yd <sup>2</sup>	813.74 g/m <sup>2</sup>
	0.04 ft W X 0.1 ft L	1.27 cm W X 3.18 cm L

## Performance Testing

<b>PILL TEST</b>	Pass
<b>RADIANT PANEL</b>	Class I
<b>NBS SMOKE</b>	Less than 450
<b>ELECTROSTATIC PROPENSITY</b>	Less than 3.5 kv
<b>CRI GREENLABEL PLUS</b>	GLP8472
<b>ADA COMPLIANCE</b>	>0.6, meets the recommended static coefficient of friction for ADA walking surfaces and accessible routes

Test Reports may be included or listed by the manufacturing/inventory style number as opposed to the noted selling style number.

## Warranty

10 Year Commercial Limited

Please visit [patcraft.com](https://www.patcraft.com) for the most current warranty information.

## B | Technique

### Installation Methods

Direct Glue

[Installation Guidelines](#)

[Maintenance Guidelines](#)

### Environmental Specifications

**RECYCLABILITY** 100% Recyclable

### Materials

#### Ingredients

**DOES NOT CONTAIN** does not contain PVC, phthalates or PBD/PBDE

#### Recycled Content

**TOTAL RECYCLED CONTENT (BY WEIGHT)** <1%

**PRE-CONSUMER** <1%

**POST-CONSUMER** 0%

**COUNTRY OF ORIGIN (MANUFACTURER)** USA

Meets or exceeds all local and national regulations in country of manufacture. Manufactured in an ISO9001 & ISO14001 certified facility or equivalent. Recycled content is calculated using system allocation, mass balance, and direct insertion. The actual recycled content in this product will likely vary. For more information email [info@patcraft.com](mailto:info@patcraft.com).

### Third Party Certifications

**CRADLE TO CRADLE CERTIFIED®**

[Silver Level \(Version 3.1\)](#)

**HEALTH PRODUCT DECLARATION (HPD)**

[Per GHS SDS Disclosure](#)

**ENVIRONMENTAL PRODUCT DECLARATION (EPD)**

[3rd Party Certified in Accordance with ISO14044, ISO14025 & EN15804](#)

**NSF 140**

[Gold](#)

**CRI GREEN LABEL PLUS (GLP)**

[GLP8472](#)

**ENVIRONMENTAL GUARANTEE**

[Free transport and recycling within the United States and Canada.](#)

**PRODUCT PACKAGING**

100% Recyclable

**USGBC LEED**

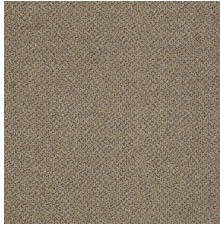
contributes



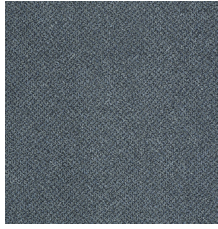
Specifications are subject to nominal manufacturing variances. Material supply and/or manufacturing processes may necessitate specification changes without notice. This carpet is an exclusive design and may not be duplicated in any manner. Use of this design in the creation of another carpet design is also strictly prohibited. Visit [patcraft.com/testing](https://patcraft.com/testing) for more information.

## B | Technique

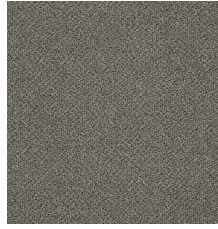
### Available Colorways



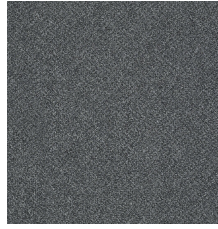
LITERAL 48201



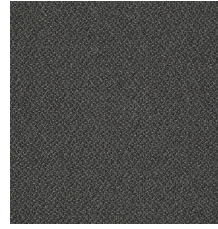
SHOTGUN 48407



STYLIZED 48502



SURREAL 48505



FREE FORM 48508