

B | Scholastic II-26 oz. PRODUCT SPECIFICATIONS

COLLECTION	Scholastic II
STYLE NUMBER	I0120
PRODUCT TYPE	Broadloom
CONSTRUCTION	Textured Loop
FIBER TYPE	EcoSolution Q® Nylon
DYE METHOD	100% Solution Dyed
PRIMARY BACKING	Synthetic
SECONDARY BACKING	ClassicBac®
PROTECTIVE TREATMENTS	SSP® Shaw Soil Protection

	US Units	Metric Units
PRODUCT SIZE	12 ft	3.66 m
GAUGE	1/10 inches	39.37 per 10 cm
STITCHES	10 per inches	39.37 per 10 cm
FINISHED PILE THICKNESS	0.172 inches	4.37 mm
AVERAGE DENSITY	5442 oz/yd ³	0.20 g/cm ³
KILOTEX		12.57
TOTAL THICKNESS	0.311 inches	7.90 mm
TUFTED YARN WEIGHT	26 oz/yd ²	881.55 g/m ²

Performance Testing

PILL TEST	Pass
RADIANT PANEL	Class I
NBS SMOKE	Less than 450
ELECTROSTATIC PROPENSITY	Less than 3.5 kv
CRI GREENLABEL PLUS	GLP8472
ADA COMPLIANCE	>0.6, meets the recommended static coefficient of friction for ADA walking surfaces and accessible routes

Test Reports may be included or listed by the manufacturing/inventory style number as opposed to the noted selling style number.

Warranty

10 Year Commercial Limited

Please visit patcraft.com for the most current warranty information.

Installation Methods

Direct Glue

[Installation Guidelines](#)

[Maintenance Guidelines](#)

Environmental Specifications

RECYCLABILITY	100% recyclable
----------------------	-----------------

B | Scholastic II-26 oz.

Materials

Ingredients

DOES NOT CONTAIN

does not contain PVC, phthalates or PBD/PBDE

Recycled Content

TOTAL RECYCLED CONTENT (BY WEIGHT)

<1%

PRE-CONSUMER

<1%

POST-CONSUMER

0%

COUNTRY OF ORIGIN (MANUFACTURER)

USA

Meets or exceeds all local and national regulations in country of manufacture. Manufactured in an ISO9001 & ISO14001 certified facility or equivalent. Recycled content is calculated using system allocation, mass balance, and direct insertion. The actual recycled content in this product will likely vary. For more information email info@patcraft.com.

Third Party Certifications

CRADLE TO CRADLE CERTIFIED®

Silver Level (Version 3.1)

HEALTH PRODUCT DECLARATION (HPD)

Per GHS SDS Disclosure

ENVIRONMENTAL PRODUCT DECLARATION (EPD)

3rd Party Certified in Accordance with ISO14044, ISO14025 & EN15804

NSF 140

Gold

CRI GREEN LABEL PLUS (GLP)

GLP8472

ENVIRONMENTAL GUARANTEE

Free transport and recycling within the United States and Canada.

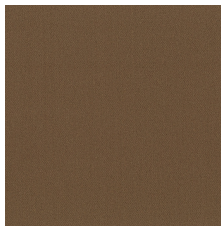
PRODUCT PACKAGING

100% Recyclable

USGBC LEED

contributes

Available Colorways



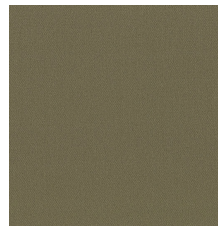
GRADUATE PROGRA
00200



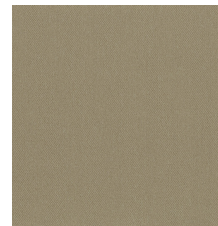
CURRICULA 00201



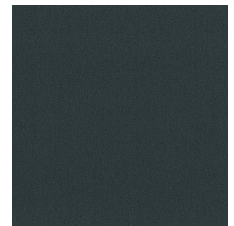
BOWL GAMES 00300



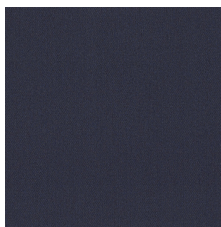
FINANCIAL AID 00301



TENURE 00302



ENROLLMENT 00370



ACADEMIC PROBAT
00401



TRANSCRIPT 00402



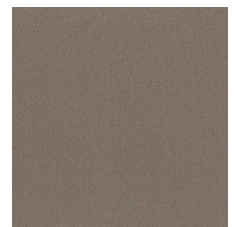
TUITION 00471



ELECTIVE 00501



FINALS 00525



INTRAMURAL 00570



Specifications are subject to nominal manufacturing variances. Material supply and/or manufacturing processes may necessitate specification changes without notice. This carpet is an exclusive design and may not be duplicated in any manner. Use of this design in the creation of another carpet design is also strictly prohibited. Visit patcraft.com/testing for more information.

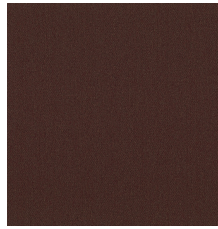
B | Scholastic II-26 oz.



UNDERGRADUATE
00572



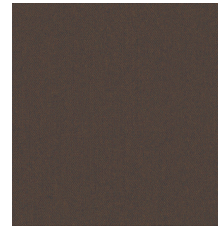
LABORATORY 00600



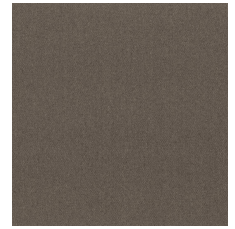
DROP & ADD 00700



STUDENT LOANS 00701



DEAN 00702



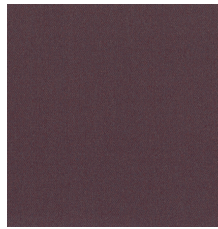
SEMESTER 00760



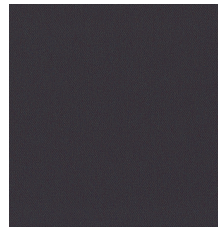
FRATERNITY 00765



SYLLABUS 00770



SORORITY 00871



MIDTERM 00960