

B | Socrates II 26 oz. PRODUCT SPECIFICATIONS



COLLECTION	Socrates II
STYLE NUMBER	10068
PRODUCT TYPE	Broadloom
CONSTRUCTION	Textured Loop
FIBER TYPE	EcoSolution Q® Nylon
DYE METHOD	100% Solution Dyed
PRIMARY BACKING	Synthetic
SECONDARY BACKING	Ultraloc®
PROTECTIVE TREATMENTS	R2X
GSA APPROVED PRODUCT	Yes

PRODUCT SIZE

GAUGE

STITCHES

FINISHED PILE THICKNESS

AVERAGE DENSITY

KILOTEX

TOTAL THICKNESS

TUFTED YARN WEIGHT

US Units

12 ft
1/8 inches
7.33 per inches
0.162 inches
5778 oz/yd³

0.31 inches
26 oz/yd²

Metric Units

3.66 m
31.50 per 10 cm
28.87 per 10 cm
4.11 mm
0.21 g/cm³
11.59
7.87 mm
881.55 g/m²

Performance Testing

PILL TEST

RADIANT PANEL

NBS SMOKE

ELECTROSTATIC PROPENSITY

CRI GREENLABEL PLUS

ADA COMPLIANCE

Pass
Class I
Less than 450
Less than 3.5 kv
GLP8472

>0.6, meets the recommended static coefficient of friction for ADA walking surfaces and accessible routes

Test Reports may be included or listed by the manufacturing/inventory style number as opposed to the noted selling style number.

Warranty

[Lifetime Commercial Limited](#)

Please visit [patcraft.com](https://www.patcraft.com) for the most current warranty information.

B | Socrates II 26 oz.

Installation Methods

Direct Glue, Stretch-In, Double- Stick

[Installation Guidelines](#)

[Maintenance Guidelines](#)

Environmental Specifications

RECYCLABILITY 100% recyclable

Materials

Ingredients

DOES NOT CONTAIN does not contain PVC, phthalates or PBD/PBDE

Recycled Content

TOTAL RECYCLED CONTENT (BY WEIGHT) <1%

PRE-CONSUMER <1%

POST-CONSUMER 0%

COUNTRY OF ORIGIN (MANUFACTURER) USA

Meets or exceeds all local and national regulations in country of manufacture. Manufactured in an ISO9001 & ISO14001 certified facility or equivalent. Recycled content is calculated using system allocation, mass balance, and direct insertion. The actual recycled content in this product will likely vary. For more information email info@patcraft.com.

Third Party Certifications

CRADLE TO CRADLE CERTIFIED®

[Silver Level \(Version 3.1\)](#)

HEALTH PRODUCT DECLARATION (HPD)

[Per GHS SDS Disclosure](#)

ENVIRONMENTAL PRODUCT DECLARATION (EPD)

[3rd Party Certified in Accordance with ISO14044, ISO14025 & EN15804](#)

NSF 140

[Gold](#)

CRI GREEN LABEL PLUS (GLP)

[GLP2271](#)

ENVIRONMENTAL GUARANTEE

[Free transport and recycling within the United States and Canada.](#)

PRODUCT PACKAGING

[100% Recyclable](#)

USGBC LEED

[contributes](#)



Specifications are subject to nominal manufacturing variances. Material supply and/or manufacturing processes may necessitate specification changes without notice. This carpet is an exclusive design and may not be duplicated in any manner. Use of this design in the creation of another carpet design is also strictly prohibited. Visit patcraft.com/testing for more information.

B | Socrates II 26 oz.

Available Colorways



SOREL 00105



SEARLE 00108



HUME 00110



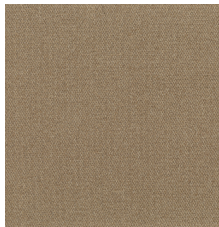
LOCKE 00111



DESCARTES 00112



BERKELEY 00114



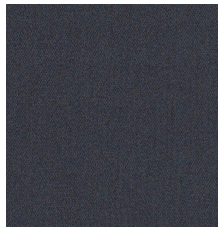
EMERSON 00120



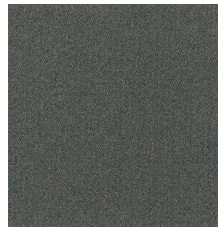
CROCE 00314



STRAUSS 00324



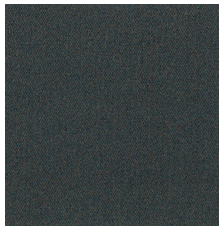
AUGUSTINE 00401



CONFUCIUS 00416



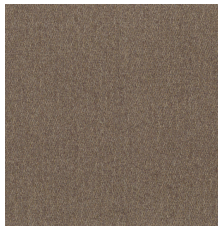
REID 00417



BACON 00418



SCHWEITZER 00425



GROSSO 00507



GELLNER 00509



THALES 00511



EPICURUS 00515



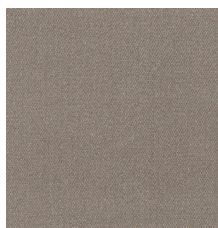
BALTASAR 00521



SCHILLER 00522



SARTRE 00523



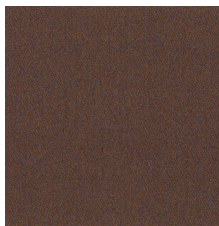
HOBBS 00530



SPINOZA 00540



VOLTAIRE 00550



LEWIS 00706



FISKE 00819



MARX 00922