



## R | Smart Stride PRODUCT SPECIFICATIONS



<b>COLLECTION</b>	Smart Stride
<b>STYLE NUMBER</b>	1774V
<b>CONSTRUCTION</b>	Commercial Slip-Resistant Sheet
<b>OVERALL THICKNESS</b>	0.079 inches (2 mm)
<b>REFERENCE SPECIFICATION</b>	ASTM F1303 Type 1, Grade 1
<b>FINISH</b>	ExoGuard®
<b>INSTALLATION TYPE</b>	Dry Back
<b>INSTALLATION</b>	Glue Down
<b>RECOMMENDED ADHESIVE</b>	4200 (1 gal), 4200 (4 gal), 2200 (4 gal), S150 or 4151 (4 gal)

### Packaging

**ROLL SIZE**

**SY /ROLL**

**WEIGHT /ROLL**

#### US Units

78.74 inches W x 65.62 ft L

47.84 sq yds/roll

229.28 lbs

#### Metric Units

2 m W x 20 m L

40 sq m/roll

104 kg



# R | Smart Stride

## Performance Testing

<b>STATIC LOAD / ASTM F970</b>	Passes (Modified), *2000 lbs
<b>RESISTANCE TO CHEMICALS / ASTM F925</b>	Passes
<b>RADIANT PANEL / ASTM E648</b>	Passes, Class I
<b>SMOKE DENSITY / ASTM E662</b>	Passes
<b>COEFFICIENT OF FRICTION (ASTM D2047, SLIP RESISTANCE)</b>	≥0.5, meets the recommended static coefficient of friction for ADA walking surfaces
<b>ENHANCED SLIP RESISTANCE / SURFACE ROUGHNESS</b>	20
<b>ENHANCED SLIP RESISTANCE / AS 4586 APPENDIX D</b>	R11
<b>ENHANCED SLIP RESISTANCE / DIN 51130/EN 16165 ANNEX B</b>	R11
<b>ENHANCED SLIP RESISTANCE / AS 4586 APPENDIX A</b>	P4
<b>ENHANCED SLIP RESISTANCE / RRL PENDULUM TEST</b>	45+
<b>ENHANCED SLIP RESISTANCE / EN 13845</b>	ESf

\*Results are based on a laboratory test and used for comparative purposes. Real life load limit may vary.

Test Reports may be included or listed by the manufacturing/inventory style number as opposed to the noted selling style number.

## Warranty

10 Year Commercial Limited.

Commercial Limited Underbed Bond Warranty S150/Lokworx+ Resilient.

Please visit [patcraft.com](http://patcraft.com) for the most current warranty information.

## Installation Methods



Reverse

[Installation Guidelines](#)

[Maintenance Guidelines](#)

## Environmental Specifications

**EMBODIED CARBON (CRADLE TO GATE)** 7.02 kg CO<sub>2</sub>/m<sup>2</sup>

## Third Party Certifications

**HEALTH PRODUCT DECLARATION (HPD)** 1000 ppm Disclosure

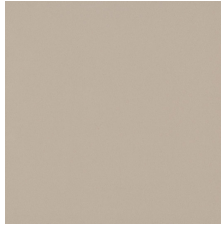
**ENVIRONMENTAL PRODUCT DECLARATION (EPD)** 3rd Party Certified in Accordance with ISO 14025, EN 15804, & ISO 21930:2017

**FLOORSCORE®** Certified

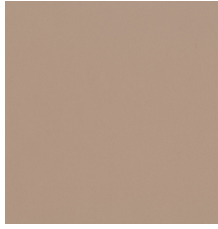


# R | Smart Stride

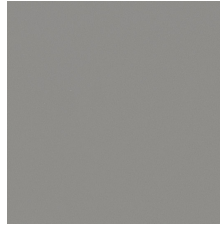
## Available Colorways



LATTE 00222



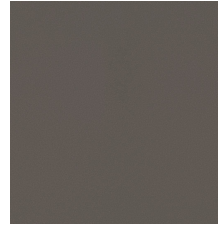
BLUFF 00224



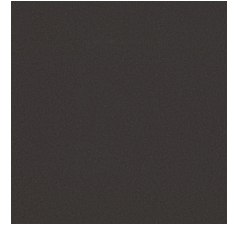
FOG 00226



DOVE GRAY 00231



PEWTER 00234



ESPRESSO 00236