

COLLECTION LOOKBOOK /

patcraft®

SMART STRIDE

Smart Stride
Smart Stride+



commercial
slip-resistant
sheet

Rated + tested for
slip-resistance.
Safeguarding zones to
wash, prep, sip or drip.

Smart Stride and **Smart Stride+** are durable
flooring solutions tested for slip-resistance
throughout a range of high-traffic spaces
where water may be present.





**TESTED FOR SLIP-RESISTANCE IN SPACES
LARGE OR SMALL. DURABLE + FUNCTIONAL. /**

Available in a variety of colors accented with a small-scale fleck, products are easy to clean and easy to maintain and backed with a 10-year commercial limited warranty.

inside the design /



slip resistant

Smart Stride and Smart Stride+ are durable flooring solutions tested for slip-resistance throughout a range of high-traffic spaces where water may be present.



shoe + no-shoe traffic options

The Pendulum Test rated Smart Stride for slip resistance in shoe-wearing areas, while Smart Stride+ scored higher for areas without shoes.



durable construction + high appearance retention

Both styles feature an aggregate in the top layer for improved slip resistance and durability, preserving floor integrity.



seamless water-tight installation

Smart Stride and Smart Stride+ sheet products can be heat welded and flash covered for seamless, water-tight transitions.



easy to clean

Products are easy to clean and easy to maintain — durable and functional.



ideal for zoning + wayfinding

Products are ideal for zoning and wayfinding to designate specific areas where water is consistently present.

spaces to
traverse /



Ideal for a range of
high-traffic spaces
where water may
be present.

education
retail
healthcare
senior living



SMART STRIDE+ in dune
and sandstone



SMART STRIDE in dove gray
and bluff

spaces to drip /

Ideal for spaces where water is consistently present, the slip-resistant floor is designed for shoe vs. no shoe traffic, using the Pendulum Test to measure slip resistance and the coefficient of friction.

healthcare
senior living
education
retail
hospitality





SMART STRIDE+ in breeze



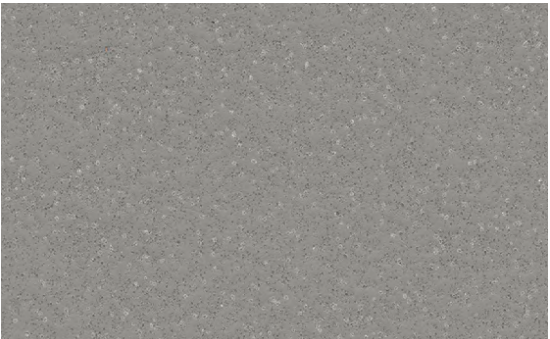
SMART STRIDE+ in ripple featured with
HOLISTIC SHADES in rest

COLORWAYS + RECOMMENDED WELD ROD COLORS* / I774V SMART STRIDE



Dove Gray 231

230PC | WEL 29858



Fog 226

230PC | WEL 25764



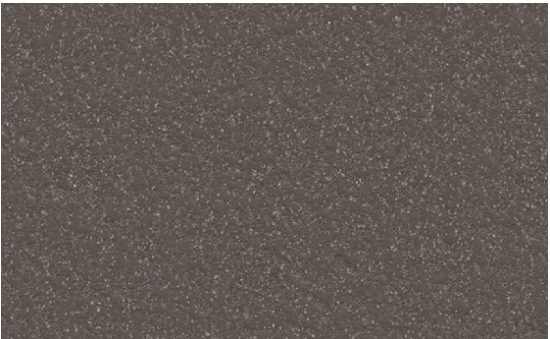
Bluff 224

230PC | WEL 25213



Latte 222

230PC | WEL 25212



Pewter 234

230PC | WEL 25204



Espresso 236

230PC | WEL 28640

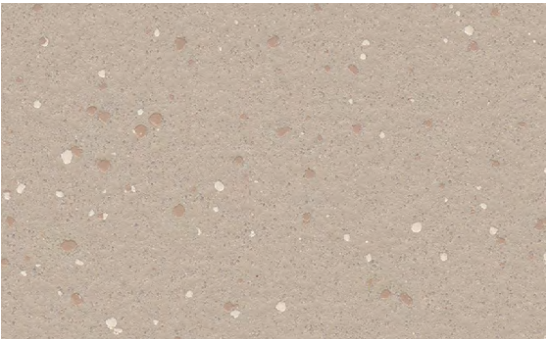
*These are suggestions only. Please order samples to ensure desired color match.

COLORWAYS + RECOMMENDED WELD ROD COLORS* / I775V SMART STRIDE+



Dune 766

230PC | WEL 25766



Sandstone 761

230PC | WEL 25212



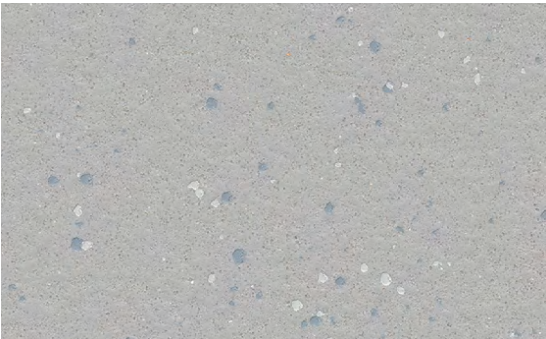
Haze 773

230PC | WEL 25764



Breeze 767

230PC | WEL 22090



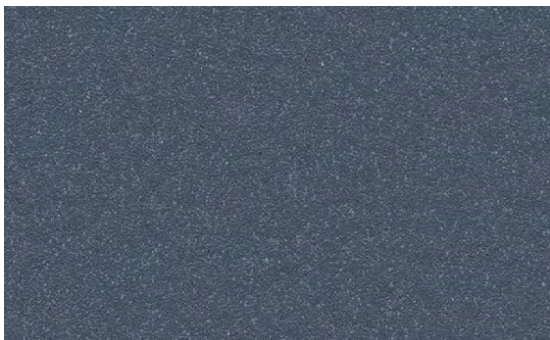
Ripple 763

230PC | WEL 25202



Night Sky 765

230PC | WEL 24490



Ocean Blue 771

230PC | WEL 25207



*These are suggestions only. Please order samples to ensure desired color match.

COORDINATING PALETTE / SENIOR LIVING



- 1 SMART STRIDE+ I775V in dune
- 2 SMART STRIDE I774V in pewter
- 3 ENLIVEN BROADLOOM I0559 in contemplative
- 4 LOCAL RESERVE I592V in hazelnut
- 5 LOCAL RESERVE I592V in carob
- 6 MONOCHROME MATTE I462V in luna
- 7 HARMONIOUS BROADLOOM I0560 in contemplative
- 8 RUBBER BASE in classic taupe 00063
- 9 BENJAMIN MOORE PAINT in Bittersweet Chocolate 2114-10
- 10 BENJAMIN MOORE PAINT in Smoked Oyster 2109-40

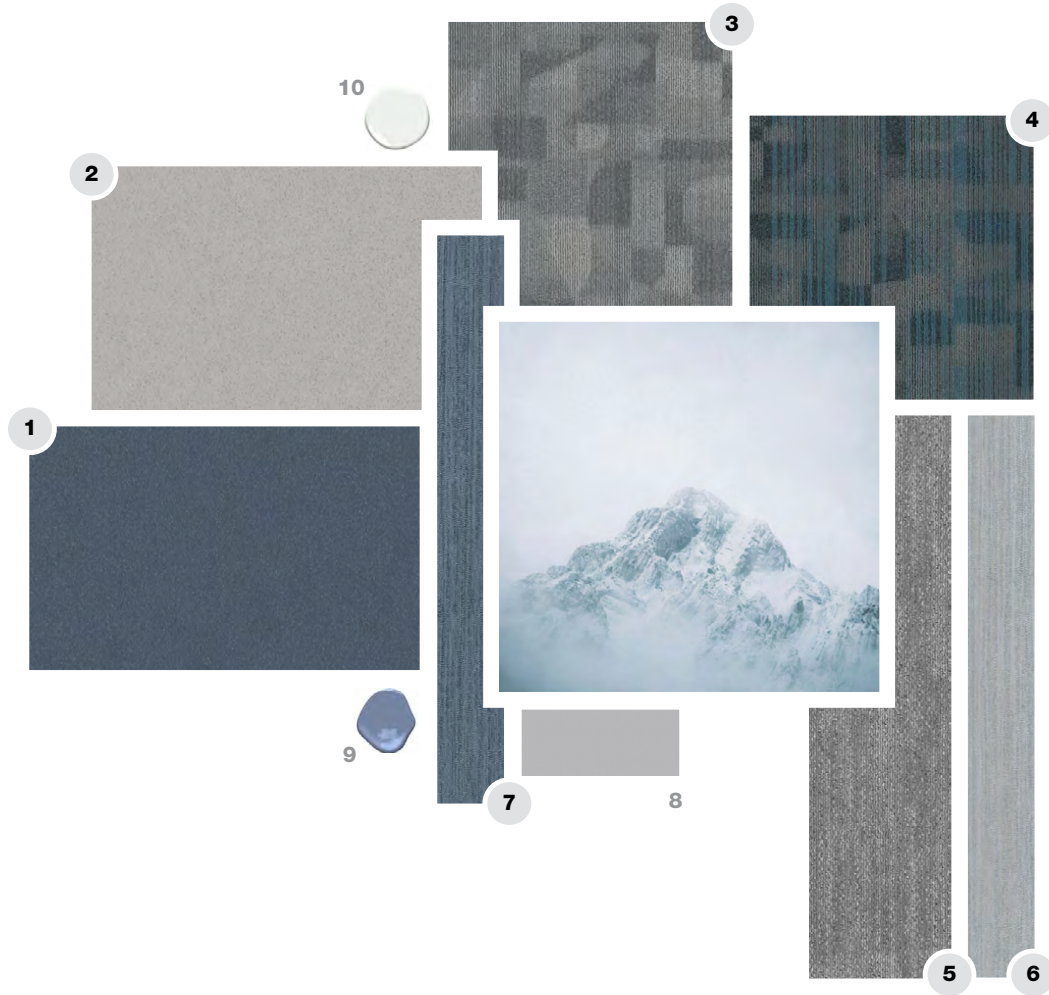
designed by

JOURDEN BIXENMAN

Interior Design Service Specialist

CUSTOMIZE & ORDER PREMIX >

COORDINATING PALETTE / EDUCATION



- 1 SMART STRIDE+ 1775V in ocean blue
- 2 SMART STRIDE 1774V in dove gray
- 3 LEARNING LAB I0661 in workshop
- 4 LEARNING LAB I0661 in workshop cyan
- 5 SELVAGE I0584 in satin
- 6 MARK MAKING 2.5MM I509V in pure
- 7 MARK MAKING 2.5MM I509V in indigo
- 8 RUBBER BASE in concrete 00046
- 9 BENJAMIN MOORE PAINT in Stratford Blue 831
- 10 BENJAMIN MOORE PAINT in Ice Mist OC-67

designed by

JOURDEN BIXENMAN

Interior Design Service Specialist

CUSTOMIZE & ORDER PREMIX >

COORDINATING PALETTE / HEALTHCARE



- 1 SMART STRIDE+ 1775V in night sky
- 2 SMART STRIDE 1774V in fog
- 3 NUMIX 1768V in eucalyptus solid
- 4 COMPOSED LAYER 10605 in jade
- 5 UNFOLD 10609 in jade
- 6 ENRICH PLANK 1447V in comfort
- 7 NUMIX 1768V in lunar fleck
- 8 RUBBER BASE in tarnished silver 00035
- 9 BENJAMIN MOORE PAINT in Boreal Forest AF-480
- 10 BENJAMIN MOORE PAINT in Rain Dance 1572

designed by

JOURDEN BIXENMAN

Interior Design Service Specialist

CUSTOMIZE & ORDER PREMIX >

PRODUCT SPECS /



commercial
slip-resistant
sheet

SMART STRIDE

style I774V

product size	78.74" x 65.62' 2 m x 20 m
construction	commercial slip-resistant sheet
total thickness	.079" 2 mm
finish	ExoGuard®
installation	glue down

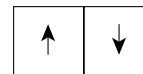
SMART STRIDE+

style I775V

product size	78.74" x 65.62' 2 m x 20 m
construction	commercial slip-resistant sheet
total thickness	.079" 2 mm
finish	ExoGuard®
installation	glue down

INSTALLATION METHODS

REVERSE



SMART STRIDE+ in breeze

For full specifications and color, please [visit this collection on the website.](#)