

# R | ORGANIC HUE PRODUCT SPECIFICATIONS



<b>COLLECTION</b>	Within
<b>STYLE NUMBER</b>	I320V
<b>CONSTRUCTION</b>	Commercial Heterogeneous Sheet
<b>WEAR LAYER THICKNESS</b>	20 mil / 0.02 inches (0.508 mm)
<b>OVERALL THICKNESS</b>	0.087 inches (2.2 mm)
<b>REFERENCE SPECIFICATION</b>	ASTM F1303 Type 1, Grade 1
<b>BACKING CLASS</b>	4-ply Fused Backing System
<b>FINISH</b>	ExoGuard®
<b>INSTALLATION TYPE</b>	Dry Back
<b>INSTALLATION</b>	Glue Down
<b>RECOMMENDED ADHESIVE</b>	4200 (4 gal), 2200 (4 gal) or S150 SPRAY ADHS

## Packaging

**ROLL SIZE**

**SY /ROLL**

**WEIGHT /ROLL**

### US Units

72.05 inches W x 75 ft L

50 sq yds/roll

267.5 lbs

### Metric Units

1.8 m W x 22.9 m L

41.8 sq m/roll

121.3 kg

## Performance Testing

**STATIC LOAD / ASTM F970**

Passes (Modified), \*1500 lbs

**FLEXIBILITY / ASTM F137**

Passes

**RESIDUAL INDENTATION / ASTM F1914**

Passes

**RESISTANCE TO CHEMICALS / ASTM F925**

Passes

**RADIANT PANEL / ASTM E648**

Passes, Class I

**SMOKE DENSITY / ASTM E662**

Passes

**COEFFICIENT OF FRICTION (ASTM D2047, SLIP RESISTANCE)**

≥0.5, meets the recommended static coefficient of friction for ADA walking surfaces

\*Results are based on a laboratory test and used for comparative purposes. Real life load limit may vary.

Test Reports may be included or listed by the manufacturing/inventory style number as opposed to the noted selling style number.

# R | ORGANIC HUE

## Warranty

15 Year Commercial Limited.

Commercial Limited Underbed Bond Warranty S150/Lokworx+ Resilient.

Please visit [patcraft.com](https://patcraft.com) for the most current warranty information.

## Installation Methods



Reverse

[Installation Guidelines](#)

[Maintenance Guidelines](#)

## Environmental Specifications

**EMBODIED CARBON (CRADLE TO GATE)**

9.4 kg CO<sub>2</sub>/m<sup>2</sup>

## Third Party Certifications

**HEALTH PRODUCT DECLARATION (HPD)**

[100 PPM Disclosure](#)

**ENVIRONMENTAL PRODUCT DECLARATION (EPD)**

[3rd Party Certified in Accordance with ISO 14025, EN 15804, & ISO 21930:2017](#)

**FLOORSCORE®**

[Certified](#)

## Available Colorways



JASMINE 00100



SAND 00110



VANILLA 00120



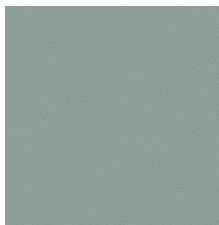
WHEAT 00140



DANDELION 00200



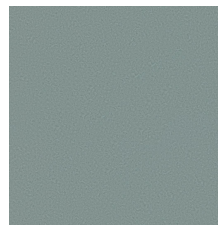
BURLAP 00210



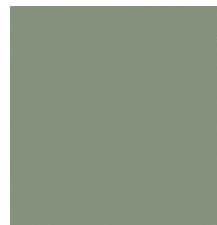
CELADON 00300



PISTACHIO 00310



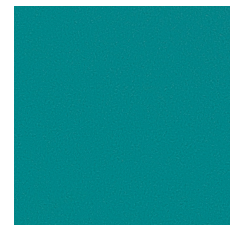
FERN 00320



SAGE 00330

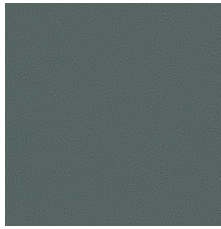


JADE 00340



AQUAMARINE 00350

# R | ORGANIC HUE



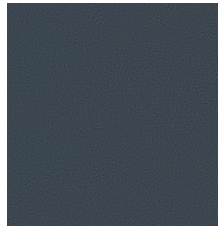
FOREST 00360



STEEL 00410



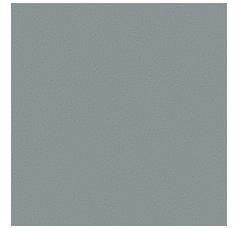
CORNFLOWER 00420



IRON 00430



ICE 00500



GRAVEL 00530



COAL 00540



PAPAYA 00600



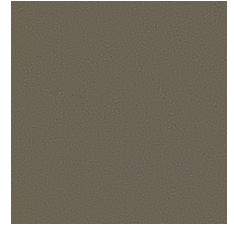
CAMEL 00610



HICKORY 00630



SMOKE 00710



MUSHROOM 00750



RUBY 00800



MULBERRY 00900