

R | Wood + Weald

PRODUCT SPECIFICATIONS



COLLECTION	Rematerial
STYLE NUMBER	I781V
CONSTRUCTION	Heavy Commercial PVC-Free EcoWorx Resilient
OVERALL THICKNESS	0.098 inches (2.5 mm)
EDGE PROFILE	Micro-Bevel
FINISH	ExoGuard+®
INSTALLATION TYPE	Dry Back
RECOMMENDED ADHESIVE	4200 (1 gal) or 4200 (4 gal)

Packaging

PLANK SIZE

PIECES /BOX

AREA /BOX

WEIGHT /BOX

US Units

8.27 inches W x 50.79 inches L

16

46.65 sq ft

36.43 lbs

Metric Units

21 cm W x 129 cm L

4.3 sq m

16.5 kg

Performance Testing

STATIC LOAD / ASTM F970

Passes (Modified), *2500 lbs

RESISTANCE TO CHEMICALS / ASTM F925

Passes

RADIANT PANEL / ASTM E648

Passes, Class I

COEFFICIENT OF FRICTION (ASTM D2047, SLIP RESISTANCE)

>0.6, meets the recommended static coefficient of friction
for ADA walking surfaces and accessible routes

*Results are based on a laboratory test and used for comparative purposes. Real life load limit may vary.

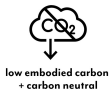
Test Reports may be included or listed by the manufacturing/inventory style number as opposed to the noted selling style number.

Warranty

1 Year Commercial Limited.

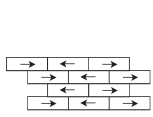
25 Year Commercial Limited.

Please visit patcraft.com for the most current warranty information.

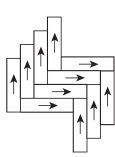


R | Wood + Weald

Installation Methods



Brick



Herringbone



Stagger

[Installation Guidelines](#)

[Maintenance Guidelines](#)

Environmental Specifications

EMBODIED CARBON (CRADLE TO GATE)

5.2 kg CO₂/m²

LIFE CYCLE CARBON EMISSIONS

Carbon Neutral

Materials

RECYCLED CONTENT

Post-consumer - 25%

Third Party Certifications

HEALTH PRODUCT DECLARATION (HPD)

[1000 PPM Disclosure](#)

ENVIRONMENTAL PRODUCT DECLARATION (EPD)

[3rd Party Certified in Accordance with ISO 14025, EN 15804, & ISO 21930:2017](#)

DECLARE

[LBC Compliant](#)

ENVIRONMENTAL GUARANTEE

The products in this collection are In The Loop – they are fully recyclable through our re[TURN]® Reclamation Program. We will facilitate the pick-up and free return of a minimum of 100 SY of EcoWorx®, 500 SY of ReWorx™, 1,000 SF EcoWorx® resilient or 5,000 SF of Shaw manufactured resilient products to be recycled. Participating in re[TURN]® lowers carbon emissions of these products by reducing virgin materials needed for making new products.

GREENHEALTH APPROVED

[Yes](#)

R | Wood + Weald

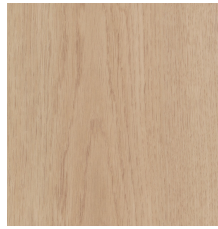
Available Colorways



SPRUCE-V2 00105
V2 - SLIGHT VARIATION



BIRCH-V2 00110
V2 - SLIGHT VARIATION



WILLOW-V2 00115
V2 - SLIGHT VARIATION



ELM-V2 00120
V2 - SLIGHT VARIATION



BARK-V2 00125
V2 - SLIGHT VARIATION



ALPINE-V2 00330
V2 - SLIGHT VARIATION



LAGOON-V2 00345
V2 - SLIGHT VARIATION



ARCTIC-V2 00430
V2 - SLIGHT VARIATION



MIST-V2 00505
V2 - SLIGHT VARIATION



PEBBLE-V2 00525
V2 - SLIGHT VARIATION



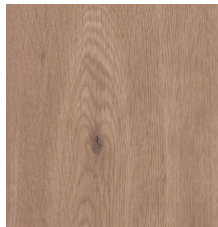
FIR-V2 00530
V2 - SLIGHT VARIATION



CHARCOAL-V2 00590
V2 - SLIGHT VARIATION



ARBOR-V2 00710
V2 - SLIGHT VARIATION



JUNIPER-V2 00715
V2 - SLIGHT VARIATION



TEAK-V2 00720
V2 - SLIGHT VARIATION



ALDER-V2 00730
V2 - SLIGHT VARIATION



ACORN-V2 00745
V2 - SLIGHT VARIATION



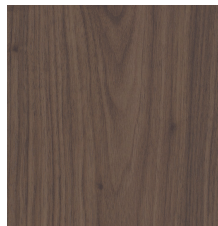
CYPRESS-V2 00750
V2 - SLIGHT VARIATION



MAPLE-V2 00755
V2 - SLIGHT VARIATION



CEDAR-V2 00760
V2 - SLIGHT VARIATION



TIMBER-V2 00780
V2 - SLIGHT VARIATION

Color and Visual Variation Index

Shade and texture variation is inherent in all resilient products and can vary significantly from piece to piece. Samples should be used to assess color.

