



R | DISSIPATE

PRODUCT SPECIFICATIONS



COLLECTION	Set In Concrete
STYLE NUMBER	I334V
CONSTRUCTION	Heavy Commercial Luxury Vinyl Tile
WEAR LAYER THICKNESS	20 mil / 0.02 inches (0.508 mm)
OVERALL THICKNESS	0.098 inches (2.5 mm)
EDGE PROFILE	Squared Edge
REFERENCE SPECIFICATION	ASTM F1700 Class III printed film vinyl tile Type B (embossed)
FINISH	ExoGuard®
INSTALLATION TYPE	Dry Back
INSTALLATION	Glue Down
RECOMMENDED ADHESIVE	4200 (4 gal), 2200 (4 gal), 4252 (4 gal) or S150 SPRAY ADHS

Packaging

PLANK SIZE
PIECES /BOX
AREA /BOX
WEIGHT /BOX

US Units

23.63 inches W x 23.63 inches L
12
46.5 sq ft
39.99 lbs

Metric Units

60 cm W x 60 cm L

4.3 sq m
18.1 kg

Performance Testing

STATIC LOAD / ASTM F970
RESISTANCE TO CHEMICALS / ASTM F925
RADIANT PANEL / ASTM E648
COEFFICIENT OF FRICTION (ASTM D2047, SLIP RESISTANCE)

Passes (Modified), *1000 lbs
Passes
Passes, Class I
≥0.5, meets the recommended static coefficient of friction for ADA walking surfaces

*Results are based on a laboratory test and used for comparative purposes. Real life load limit may vary.

Test Reports may be included or listed by the manufacturing/inventory style number as opposed to the noted selling style number.

Warranty

15 Year Commercial Limited.

Commercial Limited Underbed Bond Warranty S150/Lokworx+ Resilient.

Please visit patcraft.com for the most current warranty information.



R | DISSIPATE

Installation Methods



Quarter Turn

[Installation Guidelines](#)

[Maintenance Guidelines](#)

Environmental Specifications

EMBODIED CARBON (CRADLE TO GATE)

7.45 kg CO₂/m²

Third Party Certifications

HEALTH PRODUCT DECLARATION (HPD)

[1000 ppm Disclosure](#)

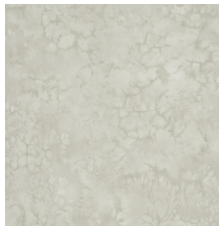
ENVIRONMENTAL PRODUCT DECLARATION (EPD)

[3rd Party Certified in Accordance with ISO 14025, EN 15804, & ISO 21930:2017](#)

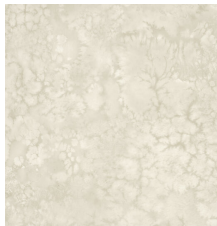
FLOORSCORE®

[Certified](#)

Available Colorways



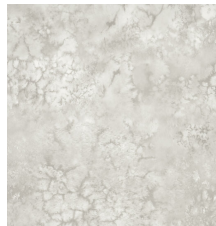
PUDDLE 00100



SPRING 00110



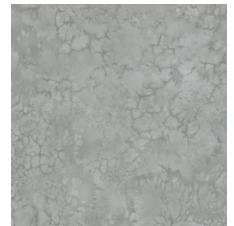
SALTWATER 00500



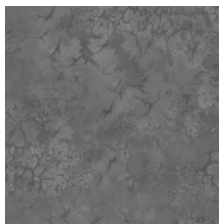
MARSH 00515



POND 00525



LAKE 00560



STORM 00570



PEAT 00725