



# R | Megalith

## PRODUCT SPECIFICATIONS



<b>COLLECTION</b>	Lithic
<b>STYLE NUMBER</b>	I780V
<b>CONSTRUCTION</b>	Heavy Commercial Luxury Vinyl Tile
<b>WEAR LAYER THICKNESS</b>	20 mil / 0.02 inches (0.508 mm)
<b>OVERALL THICKNESS</b>	0.197 inches (5 mm)
<b>EDGE PROFILE</b>	Squared Edge
<b>REFERENCE SPECIFICATION</b>	ASTM F1700 Class III printed film vinyl plank Type B
<b>FINISH</b>	ExoGuard®
<b>INSTALLATION TYPE</b>	Dry Back
<b>INSTALLATION</b>	Glue Down
<b>RECOMMENDED ADHESIVE</b>	4200 (4 gal), 2200 (4 gal), 4252 (4 gal) or S150

## Packaging

### PLANK SIZE

### PIECES /BOX

### AREA /BOX

### WEIGHT /BOX

### US Units

18 inches W x 36 inches L

5

22.5 sq ft

44.01 lbs

### Metric Units

45.7 cm W x 91.4 cm L

2.1 sq m

20 kg

## Performance Testing

### STATIC LOAD / ASTM F970

[Passes \(Modified\), \\*1000 lbs](#)

### RESIDUAL INDENTATION / ASTM F1914

[Passes](#)

### RESISTANCE TO CHEMICALS / ASTM F925

[Passes](#)

### RADIANT PANEL / ASTM E648

[Passes, Class I](#)

### SMOKE DENSITY / ASTM E662

[Passes](#)

### COEFFICIENT OF FRICTION (ASTM D2047, SLIP RESISTANCE)

[>0.6, meets the recommended static coefficient of friction for ADA walking surfaces and accessible routes](#)

\*Results are based on a laboratory test and used for comparative purposes. Real life load limit may vary.

Test Reports may be included or listed by the manufacturing/inventory style number as opposed to the noted selling style number.



# R | Megalith

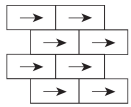
## Warranty

15 Year Commercial Limited.

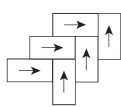
Commercial Limited Underbed Bond Warranty S150/Lokworx+ Resilient.

Please visit [patcraft.com](https://patcraft.com) for the most current warranty information.

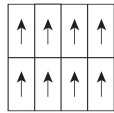
## Installation Methods



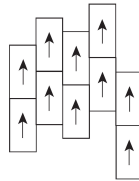
Brick



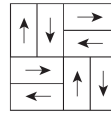
Herringbone



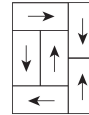
Monolithic



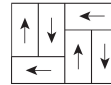
Stagger



Basketweave



Boxed In



Half Basketweave

[Installation Guidelines](#)

[Maintenance Guidelines](#)

## Environmental Specifications

**EMBODIED CARBON (CRADLE TO GATE)**

6.05 kg CO<sub>2</sub>/m<sup>2</sup>

## Third Party Certifications

**HEALTH PRODUCT DECLARATION (HPD)**

[1,000 PPM Disclosure](#)

**ENVIRONMENTAL PRODUCT DECLARATION (EPD)**

[3rd Party Certified in Accordance with ISO 14025, EN 15804, & ISO 21930:2017](#)

**FLOORSCORE®**

[Certified](#)

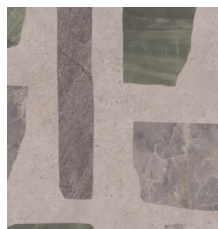
## Available Colorways



DUOMO-V2 00145



BRERA-V2 00180



MENAGGIO-V2 00530



COMO-V2 00545



LOMBARDY-V2 00550



NAVIGLI-V2 00750