



R | Megalith

PRODUCT SPECIFICATIONS



COLLECTION	Lithic
STYLE NUMBER	I780V
CONSTRUCTION	Heavy Commercial Luxury Vinyl Tile
WEAR LAYER THICKNESS	20 mil / 0.02 inches (0.508 mm)
OVERALL THICKNESS	0.197 inches (5 mm)
EDGE PROFILE	Squared Edge
REFERENCE SPECIFICATION	ASTM F1700 Class III printed film vinyl plank Type B
FINISH	ExoGuard®
INSTALLATION TYPE	Dry Back
INSTALLATION	Glue Down
RECOMMENDED ADHESIVE	4200 (4 gal), 2200 (4 gal), 4252 (4 gal) or S150

Packaging

PLANK SIZE

PIECES /BOX

AREA /BOX

WEIGHT /BOX

US Units

18 inches W x 36 inches L

5

22.5 sq ft

44.01 lbs

Metric Units

45.7 cm W x 91.4 cm L

2.1 sq m

20 kg

Performance Testing

STATIC LOAD / ASTM F970

[Passes \(Modified\), *1000 lbs](#)

RESIDUAL INDENTATION / ASTM F1914

[Passes](#)

RESISTANCE TO CHEMICALS / ASTM F925

[Passes](#)

RADIANT PANEL / ASTM E648

[Passes, Class I](#)

SMOKE DENSITY / ASTM E662

[Passes](#)

COEFFICIENT OF FRICTION (ASTM D2047, SLIP RESISTANCE)

[>0.6, meets the recommended static coefficient of friction for ADA walking surfaces and accessible routes](#)

*Results are based on a laboratory test and used for comparative purposes. Real life load limit may vary.

Test Reports may be included or listed by the manufacturing/inventory style number as opposed to the noted selling style number.



R | Megalith

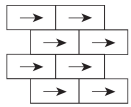
Warranty

15 Year Commercial Limited.

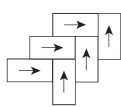
Commercial Limited Underbed Bond Warranty S150/Lokworx+ Resilient.

Please visit patcraft.com for the most current warranty information.

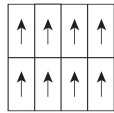
Installation Methods



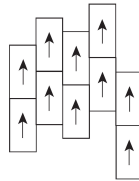
Brick



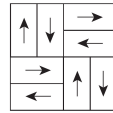
Herringbone



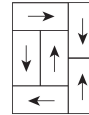
Monolithic



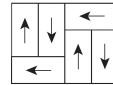
Stagger



Basketweave



Boxed In



Half Basketweave

[Installation Guidelines](#)

[Maintenance Guidelines](#)

Environmental Specifications

EMBODIED CARBON (CRADLE TO GATE)

6.05 kg CO₂/m²

Third Party Certifications

HEALTH PRODUCT DECLARATION (HPD)

[1,000 PPM Disclosure](#)

ENVIRONMENTAL PRODUCT DECLARATION (EPD)

[3rd Party Certified in Accordance with ISO 14025, EN 15804, & ISO 21930:2017](#)

FLOORSCORE®

[Certified](#)

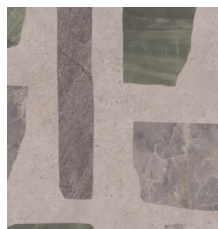
Available Colorways



DUOMO-V2 00145



BRERA-V2 00180



MENAGGIO-V2 00530



COMO-V2 00545



LOMBARDY-V2 00550



NAVIGLI-V2 00750