



# R | Molten

## PRODUCT SPECIFICATIONS



<b>COLLECTION</b>	Metal Collective
<b>STYLE NUMBER</b>	I478V
<b>CONSTRUCTION</b>	Heavy Commercial Luxury Vinyl Tile
<b>WEAR LAYER THICKNESS</b>	20 mil / 0.02 inches (0.508 mm)
<b>OVERALL THICKNESS</b>	0.197 inches (5 mm)
<b>EDGE PROFILE</b>	Squared Edge
<b>REFERENCE SPECIFICATION</b>	ASTM F1700 Class III printed film vinyl tile Type B (embossed)
<b>FINISH</b>	ExoGuard®
<b>INSTALLATION TYPE</b>	Dry Back
<b>INSTALLATION</b>	Glue Down
<b>RECOMMENDED ADHESIVE</b>	4200 (4 gal), 2200 (4 gal), 4252 (4 gal) or S150 SPRAY ADHS

## Packaging

<b>PLANK SIZE</b>
<b>PIECES /BOX</b>
<b>AREA /BOX</b>
<b>WEIGHT /BOX</b>

### US Units

23.62 inches W x 23.62 inches L
6
23.25 sq ft
51.93 lbs

### Metric Units

60 cm W x 60 cm L
2.2 sq m
23.6 kg

## Performance Testing

<b>STATIC LOAD / ASTM F970</b>
<b>RESIDUAL INDENTATION / ASTM F1914</b>
<b>RESISTANCE TO CHEMICALS / ASTM F925</b>
<b>RADIANT PANEL / ASTM E648</b>
<b>COEFFICIENT OF FRICTION (ASTM D2047, SLIP RESISTANCE)</b>

Passes (Modified), \*1000 lbs

Passes

Passes

Passes, Class I

>0.6, meets the recommended static coefficient of friction for ADA walking surfaces and accessible routes

\*Results are based on a laboratory test and used for comparative purposes. Real life load limit may vary.

Test Reports may be included or listed by the manufacturing/inventory style number as opposed to the noted selling style number.

## Warranty

15 Year Commercial Limited.

Commercial Limited Underbed Bond Warranty S150/Lokworx+ Resilient.

Please visit [patcraft.com](https://www.patcraft.com) for the most current warranty information.

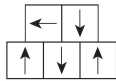


# R | Molten

## Installation Methods



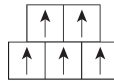
Quarter Turn



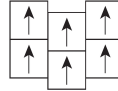
Random



Monolithic



Brick



Ashlar

[Installation Guidelines](#)

[Maintenance Guidelines](#)

## Environmental Specifications

**EMBODIED CARBON (CRADLE TO GATE)**

6.05 kg CO<sub>2</sub>/m<sup>2</sup>

## Third Party Certifications

**HEALTH PRODUCT DECLARATION (HPD)**

[1000 ppm Disclosure](#)

**ENVIRONMENTAL PRODUCT DECLARATION (EPD)**

[3rd Party Certified in Accordance with ISO 14025, EN 15804, & ISO 21930:2017](#)

**FLOORSCORE®**

[Certified](#)

## Available Colorways



ALABASTER V-2 00100  
V2 - SLIGHT VARIATION



CALCITE V-3 00500  
V3 - MODERATE VARIATION



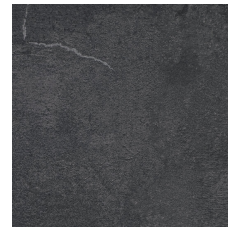
QUARTZ V-3 00520  
V3 - MODERATE VARIATION



SHALE V-2 00540  
V2 - SLIGHT VARIATION



GRANITE V-3 00560  
V3 - MODERATE VARIATION



OBSIDIAN V-2 00580  
V2 - SLIGHT VARIATION



BROWNSTONE V-3  
00780  
V3 - MODERATE VARIATION

### Color and Visual Variation Index

Shade and texture variation is inherent in all resilient products and can vary significantly from piece to piece. Samples should be used to assess color.



Uniform Appearance



Slight Variation



Moderate Variation



Substantial Variation