



R | NORTH RIDGE 6" PRODUCT SPECIFICATIONS

COLLECTION	North Ridge	
STYLE NUMBER	I207V	
CONSTRUCTION	Heavy Commercial Luxury Vinyl Tile	
	US Units	Metric Units
WEAR LAYER THICKNESS	20 mil / 0.02 inches	0.508 mm
OVERALL THICKNESS	0.118 inches	3 mm
EDGE PROFILE	Squared Edge	
REFERENCE SPECIFICATION	ASTM F1700 Class III printed film vinyl plank Type B (embossed)	
FINISH	ExoGuard®	
INSTALLATION TYPE	Dry Back	
INSTALLATION	Glue Down	
RECOMMENDED ADHESIVE	4200 (4 gal), 2200 (4 gal), 4252 (4 gal) or S150 SPRAY ADHS	

Packaging

PLANK SIZE	5.91 inches W x 36.22 inches L	15 cm W x 92 cm L
PIECES /BOX	24	
AREA /BOX	35.65 sq ft	3.3 sq m
WEIGHT /BOX	41.5 lbs	18.8 kg

Performance Testing

STATIC LOAD / ASTM F970	Passes (Modified), *1500 lbs
RESIDUAL INDENTATION / ASTM F1914	Passes
RESISTANCE TO CHEMICALS / ASTM F925	Passes
RADIANT PANEL / ASTM E648	Passes, Class I
COEFFICIENT OF FRICTION (ASTM D2047, SLIP RESISTANCE)	>0.6, meets the recommended static coefficient of friction for ADA walking surfaces and accessible routes

*Results are based on a laboratory test and used for comparative purposes. Real life load limit may vary.

Test Reports may be included or listed by the manufacturing/inventory style number as opposed to the noted selling style number.

Warranty

15 Year Commercial Limited.

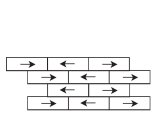
Commercial Limited Underbed Bond Warranty S150/Lokworx+ Resilient.

Please visit patcraft.com for the most current warranty information.

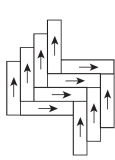


R | NORTH RIDGE 6"

Installation Methods



Brick



Herringbone



Stagger

[Installation Guidelines](#)

[Maintenance Guidelines](#)

Environmental Specifications

EMBODIED CARBON (CRADLE TO GATE)

6.05 kg CO₂/m²

Third Party Certifications

HEALTH PRODUCT DECLARATION (HPD)

[1000 ppm Disclosure](#)

ENVIRONMENTAL PRODUCT DECLARATION (EPD)

[3rd Party Certified in Accordance with ISO 14025, EN 15804, & ISO 21930:2017](#)

FLOORSCORE®

[Certified](#)

Available Colorways



IRISH CREAM 02150
V2 - SLIGHT VARIATION



COASTAL 02160
V2 - SLIGHT VARIATION



RELIC ASH 02500
V3 - MODERATE VARIATION



HONEY OAK 02506
V2 - SLIGHT VARIATION



CABIN TIMBER 02540
V4 - SUBSTANTIAL VARIATION



SPICED TEA 02544
V2 - SLIGHT VARIATION



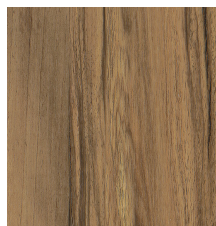
RUSTIC SMOKE 02560
V2 - SLIGHT VARIATION



TRADITIONAL CHR 02571
V2 - SLIGHT VARIATION



JACOBEOAN 02573
V2 - SLIGHT VARIATION



NAPA SUEDE 02700
V3 - MODERATE VARIATION



SONORAN LEATHER 02710
V2 - SLIGHT VARIATION



EARLY AMERICAN 02740
V3 - MODERATE VARIATION

Color and Visual Variation Index

Shade and texture variation is inherent in all resilient products and can vary significantly from piece to piece. Samples should be used to assess color.

